

**TOPEKA RGNL** (FOE)(KFOE) P (ANG ARNG) 6 S UTC-6(-5DT) N38°57.06' W95°39.82'  
 1078 B TPA—See Remarks ARFF Index—See Remarks NOTAM FILE FOE  
**RWY 13-31:** H12803X150 (CONC-GRVD) S-75, D-200, 2D-280,  
 2D/2D2-760 PCN 89 R/C/X/T HIRL  
**RWY 13:** MALS.F. REIL. PAPI(P4L)—GA 3.0° TCH 54'. RVR-R Tree. Rgt tfc.

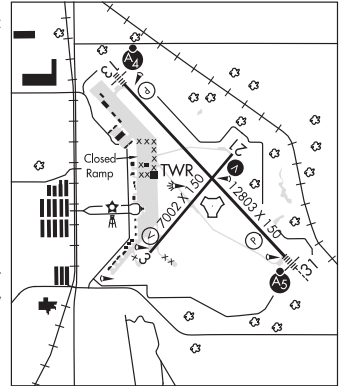
**KANSAS CITY**  
**H-5C, L-101**  
**IAP, DIAP, AD**

**RWY 31:** MALS.R. PAPI(P4L)—GA 3.0° TCH 59'. RVR-T Tree.  
**RWY 03-21:** H7002X150 (ASPH-GRVD) S-75, D-140, 2D-220,  
 2D/2D2-620 PCN 46 R/C/X/T MIRL 0.5% up SW  
**RWY 03:** REIL. VASI(V4L)—GA 3.0° TCH 47'. Rgt tfc.  
**RWY 21:** REIL. VASI(V4L)—GA 3.0° TCH 51'. Tree.

**RUNWAY DECLARED DISTANCE INFORMATION**

**RWY 03:** TORA-7001 TODA-7001 ASDA-7001 LDA-7001  
**RWY 13:** TORA-12803 TODA-12803 ASDA-12803 LDA-12803  
**RWY 21:** TORA-7001 TODA-7001 ASDA-7001 LDA-7001  
**RWY 31:** TORA-12803 TODA-12803 ASDA-12803 LDA-12803

**SERVICE:** S4 FUEL 100LL, JET A LGT When twr clsd ACTIVATE MALS.F Rwy 13; MALS.R Rwy 31; VASI Rwy 21; MIRL Rwy 03-21; HIRL Rwy 13-31—CTAF. VASI Rwy 03; PAPI Rwy 13 and Rwy 31 opr continuously. Rwy 13 REIL OTS. **MILITARY-JASU** 14(A/M32A-86D) 11(A/M32A-95) FUEL A+ (1200-0500Z, OT 1 hr PN rqr fone C785-862-0950) A++(Mil) (NC-100LL, A) FLUID ADI SP LPOX LOX OIL O-128-148(Mil) - Avbl only in qt cans.



**AIRPORT REMARKS:** Attended 1145-0400Z. Large and small migratory birds on and invof arprt. Do not mistake Philip Billard Muni, located 7 NM north heading 010°, for Topeka Rgnl. Noise abatement: VFR tfc avoid overflight of housing area 2 NM west Rwy 13. TPA—2078(1000) for light (slow) acft and 2578(1500) heavy (fast) acft. PPR 24 hrs for unscheduled air carrier ops with more than 30 passengers seats, call arprt manager 785-862-2362. Class IV, ARFF Index A, ARFF Index C level equipment avbl upon request.

**MILITARY REMARKS:** See FLIP AP/1 Supplementary Arprt Rmk. **CAUTION:** Bird haz Phase II Apr-May and Aug-Oct. **ANG** PPR for ANG ramp and svc DSN 720-4720/4663, no later than 72 hr prior. Airfield mgmt, maintenance opr control and petrol avbl weekdays 1330-2200Z, clsd weekend and Federal holidays. Svc may be avbl other times, acft park on ANG ramp, ctc WYLLIE Ctl 20 min prior to ldg, advise prior making arrival and departure UHF 286.5. Ltd trans svc avbl at FBO. Deicing fluid not avbl to tran acft. No fleet svc avbl. Oil (SOAP) sampling not avbl. No drag chute repack avbl. Precision measuring equipment laboratory (PMEL) pickup and delivery expect 1.5 hr delay. Tran svc avbl at FBO. Tran maintenance and parts support (exc KC-135R acft) extremely ltd. No qtrs avbl. Deicing fluid avbl to tran acft at FBO. **ARNG** Opr 1300-2300Z Tue-Fri exc hol, ocnl hol Sat, Sun ltd maint UH-60A. Trans Army acft ctc OPS DSN 720-8725, C785-274-1725. OPS call Coml 785-646-3825/3827. Army acft ctc ARNG OPS 32.1. ARNG ramp and fac lctd west of apch end Rwy 03.

**AIRPORT MANAGER:** 785-862-2362

**WEATHER DATA SOURCES:** ASOS (785) 862-8258 LAWRs.

**COMMUNICATIONS:** CTAF 120.8 ATIS 128.25 UNICOM 122.95

**TOPEKA RDO** 122.45 (WICHITA RADIO)

Ⓡ **KANSAS CITY CENTER APP/DEP CON** 123.8 343.7

**TOWER** 120.8 340.2 (1145-0400Z) **GND CON** 118.425 275.8

**ANG OPS** 286.5 **ARNG OPS** 32.1 229.5

**AIRSPACE:** CLASS D svc 1145-0400Z; other times CLASS E.

**VOR TEST FACILITY (VOT)** 111.0

**RADIO AIDS TO NAVIGATION:** NOTAM FILE TOP

(L) **VORTACW** 117.8 TOP Chan 125 N39°08.22' W95°32.95' 201° 12.4 NM to fld. 1075/5E.

**FORBES (T) TACAN** Chan 53 FOE (115.6) N38°56.84' W95°39.67' at fld. 1045/5E. NOTAM FILE FOE.

**ILS/DME** 110.1 I-FOE Chan 38 Rwy 31. Class IB. Unmonitored when ATCT clsd. LOM unmonitored.

**TOPEKA** N39°08.22' W95°32.95' NOTAM FILE TOP

**KANSAS CITY**

(L) **VORTACW** 117.8 TOP Chan 125 215° 5.3 NM to Philip Billard Muni. 1075/5E.

**L-101**

**RDO** 122.45 255.40 (WICHITA RADIO)

**TREGO WAKEENEY** (See WAKEENEY on page 141)

**TRI-CITY** (See PARSONS on page 129)