

NEW BEDFORD RGNL (EWB)(KEWB) 2 NW UTC-5(-4DT) N41°40.59' W70°57.47'

79 B LRA Class IV, ARFF Index A NOTAM FILE EWB

RWY 05-23: H5400X150 (ASPH-GRVD) S-30, D-108, 2S-137,
2D-195 PCR 810 F/A/X/T HIRL 0.3% up NE**RWY 05:** MALSR. RVR-T Tree.**RWY 23:** MALSR. PAPI(P4L)—GA 3.0° TCH 46'. RVR-R Thld dspcld
400'. Tree.**RWY 14-32:** H5002X75 (ASPH) S-33, D-48, 2D-95 PCR 930 F/A/X/T
MIRL**RWY 14:** PAPI(P4L)—GA 3.42° TCH 50'. Tree.**RWY 32:** REIL. PAPI(P4L)—GA 3.5° TCH 50'. Trees.**SERVICE:** S4 FUEL 100LL, JET A OX3, 4 L&G When twr clsd
ACTIVATE MALSR Rwy 05 and Rwy 23, REIL Rwy 32, HIRL Rwy
05-23, MIRL Rwy 14-32—CTAF. PAPI Rwy 14, Rwy 23 and Rwy 32
ops 24 hrs.**AIRPORT REMARKS:** Attended 1100-0400Z. Birds and wildlife on and invof
arpt. CLSD to unsked acft ops with more than 31 pax seats exc 90 day
PPR, call 508-991-6161. Twys A1 and A2 for air carrier acft only. Ldg
fees for acft ovr 3,000 lbs. Flight Notification Service (ADCUS)
available.**AIRPORT MANAGER:** 508-991-6161**WEATHER DATA SOURCES:** ASOS 126.85 (508) 992-0195. LAWRS.**COMMUNICATIONS:** CTAF 118.1 ATIS 126.85 (508) 994-6277 UNICOM 122.95Ⓡ **PROVIDENCE APP/DEP CON** 128.7 (Sun-Fri 1030-0530Z, Sat 1030-0500Z) other times ctc**BOSTON CENTER APP/DEP CON** 124.85**TOWER** 118.1 (1130-0300Z) **GND CON** 121.9**CLEARANCE DELIVERY PHONE:** For CD when Apch clsd ctc Boston ARTCC at 603-879-6859.**AIRSPACE:** CLASS D svc 1130-0300Z; other times CLASS G.**RADIO AIDS TO NAVIGATION:** NOTAM FILE PVD.**PROVIDENCE (H) (DH) VOR/DME** 115.6 PVD Chan 103 N41°43.46' W71°25.78' 112° 21.4 NM to fld. 49/14W.

VOR unusable:

085°-105° byd 12 NM blo 5,500'

085°-105° byd 8 NM blo 3,000'

106°-294° byd 30 NM blo 3,000'

295°-330° byd 30 NM blo 6,000'

331°-084° byd 30 NM blo 3,000'

DME unusable:

085°-105° byd 12 NM blo 5,500'

085°-105° byd 8 NM blo 3,000'

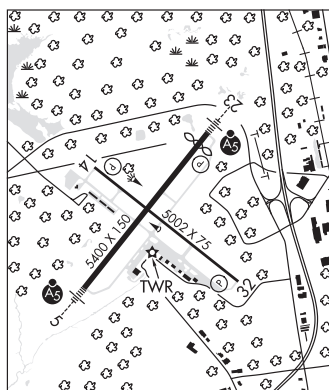
106°-152° byd 11 NM blo 2,000'

106°-152° byd 20 NM blo 4,000'

153°-294° byd 30 NM blo 3,000'

295°-330° byd 30 NM blo 6,000'

331°-084° byd 30 NM blo 3,000'

ILS/DME 109.7 I-EWB Chan 34 Rwy 05. Unmonitored when ATCT clsd. Autopilot cpd apch blw 470' na. Localizer
backcourse unusable 15° left and r of course; byd 12 NM. Backcourse DME unusable 15° left and r of course; byd 12
NM.

NEW YORK

H-10J, 11D, 12K, L-33D

IAP, AD

NEWBURYPORT**PLUM ISLAND** (2B2) 1 SE UTC-5(-4DT) N42°47.72' W70°50.37'

NEW YORK

11 NOTAM FILE BDR

RWY 14-32: 2300X100 (TURF)**RWY 14:** Trees.**RWY 32:** Trees.**RWY 10-28:** H2105X50 (ASPH) S-8**RWY 10:** Trees.**RWY 28:** Thld dspcld 300'. Fence.**SERVICE:** S4 FUEL 100LL**AIRPORT REMARKS:** Attended Apr-Sep 1300-2300Z. Attended irregularly Oct-Mar. Wildlife invof arpt. No touch and go
allowed. Ctc mgr for all arpt use reqs. Owner does not oversee ops.**AIRPORT MANAGER:** 978-463-4222**COMMUNICATIONS:** CTAF/UNICOM 123.0Ⓡ **BOSTON APP/DEP CON** 124.4 Cinc del thru Bridgeport Radio (BDR) 1-866-293-5149.**CLEARANCE DELIVERY PHONE:** For CD ctc Boston Apch at 603-594-5552.