

CENTRALIA MUNI (ENL)(KENL) 2 SE UTC-6(-5DT) N38°30.91' W89°05.47'

ST LOUIS
H-5E, L-27C
IAP

534 B NOTAM FILE ENL

RWY 18-36: H5001X75 (ASPH) S-30, D-40 MIRL 0.3% up S

RWY 18: REIL. PAPI(P2L)—GA 3.0° TCH 44'. Tree.

RWY 36: REIL. PAPI(P2L)—GA 3.0° TCH 45'. Tree. Rgt tfc.

RWY 09-27: H3300X60 (ASPH) S-12.5 MIRL

RWY 09: Road. Rgt tfc.

SERVICE: FUEL 100LL, JET A LGT ACTIVATE MIRL Rwy 09-27 and Rwy 18-36; REIL Rwy 18-36 —CTAF.

AIRPORT REMARKS: Attended 1400Z†-dusk. For svc after hrs call (920)-728-4417.

AIRPORT MANAGER: 618-533-1643

WEATHER DATA SOURCES: AWOS-3 121.125 (618) 533-4417.

COMMUNICATIONS: CTAF/UNICOM 122.8

RCO 122.1R 115.0T (ST LOUIS RADIO)

KANSAS CENTER APP/DEP CON 127.7

CLEARANCE DELIVERY PHONE: For CD if una to ctc on FSS freq, ctc Kansas City ARTCC at 913-254-8508.

RADIO AIDS TO NAVIGATION: NOTAM FILE ENL.

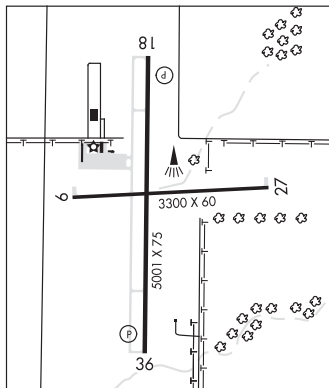
(H) **VORTAC** 115.0 ENL Chan 97 N38°25.20'

W89°09.54' 025° 6.5 NM to fld. 546/4E.

VOR portion unusable:

100°-134° blo 3,000'

135°-140° blo 2,700'



CHAMPAIGN/URBANA

UNIVERSITY OF ILLINOIS—WILLARD (CMI)(KCM) 5 SW UTC-6(-5DT) N40°02.33' W88°16.67'

CHICAGO
H-5E, L-27C
IAP, AD

755 B TPA-1505(750) Class I, ARFF Index B NOTAM FILE CMI

RWY 14L-32R: H8102X150 (ASPH-CONC-GRVD) S-100, D-180, 2S-175, 2D-260 PCN 63 R/D/X/T HIRL

RWY 14L: PAPI(P4L)—GA 3.0° TCH 48'. RVR-TR

RWY 32R: MALSR. PAPI(P4L)—GA 3.0° TCH 54'. RVR-TR

RWY 04-22: H6501X150 (CONC-GRVD) S-100, D-180, 2S-175, 2D-260 PCN 54 R/D/X/T MIRL

RWY 04: VASI(V4L)—GA 3.0° TCH 42'.

RWY 22: VASI(V4L)—GA 3.0° TCH 43'. Tree.

RWY 14R-32L: H3817X75 (ASPH) S-12.5, D-12.5, 2S-175 MIRL

RWY 14R: PAPI(P4L)—GA 3.0° TCH 36'.

RWY 32L: PAPI(P4L)—GA 3.0° TCH 43'.

LAND AND HOLD—SHORT OPERATIONS

LDG RWY	HOLD—SHORT POINT	AVBL LDG DIST
RWY 04	14L-32R	3600
RWY 14L	04-22	3500
RWY 32R	04-22	4000

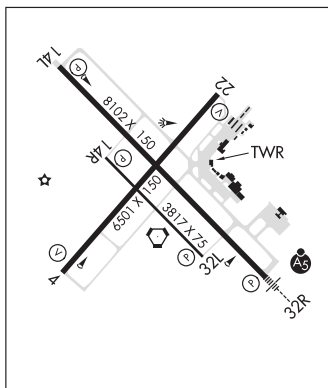
RUNWAY DECLARED DISTANCE INFORMATION

RWY 04: TORA-6501 TODA-6501 ASDA-6501 LDA-6501
RWY 14L: TORA-8102 TODA-8102 ASDA-8102 LDA-8102
RWY 14R: TORA-3817 TODA-3817 ASDA-3817 LDA-3817
RWY 22: TORA-6501 TODA-6501 ASDA-6501 LDA-6501
RWY 32L: TORA-3817 TODA-3817 ASDA-3817 LDA-3817
RWY 32R: TORA-8102 TODA-8102 ASDA-8102 LDA-8102

SERVICE: S4 FUEL 100LL, JET A1+ OX1 LGT ACTIVATE MALSR Rwy 32R; MIRL Rwy 04-22; HIRL Rwy

14L-32R—CTAF. When twr clsd HIRL Rwy 14L-32R preset on low ints, to incr ints—CTAF. PAPI Rwy 14L and Rwy 32R opr consly.

AIRPORT REMARKS: Attended continuously. Birds on and invof arpt. Rwy 14R-32L CLOSED 0500-1200Z†. Rwy 14R-32L CLOSED to acft abv 12500 lbs. Rwy 14R-32L not avbl for skedd acr opns with more than 9 psgr seats or unscheduled acr at least 31 psgr seats. AER 22 and 32R not visible from each other. Twy A5 and Twy C1 SW of Rwy 14L-32R clsd to acft over 11,800 lbs. Twy A6 and Twy A7 adj to air carrier apron, not vsb from the twr. Rwy 32R calm wind rwy when twr is clsd. Transient parking on southeast GA apron only.



CONTINUED ON NEXT PAGE

CONTINUED FROM PRECEDING PAGE

AIRPORT MANAGER: 217-244-8689

WEATHER DATA SOURCES: ASOS 124.85 (217) 355-4072.

COMMUNICATIONS: CTAF 120.4 ATIS 124.85 UNICOM 122.95

CHAMPAIGN RCO 122.1R 110.0T (ST LOUIS RADIO)

CHAMPAIGN/URBANA RCO 122.45 (ST LOUIS RADIO)

Ⓡ CHAMPAIGN APP/DEP CON 121.35 (319°-138°) 132.85 (139°-318°) (1200-0500Z‡)

Ⓡ CHICAGO CENTER APP/DEP CON 121.35 (0500-1200Z‡)

CHAMPAIGN TOWER 120.4 (1200-0500Z‡) GND CON 121.8 CLNC DEL 128.75

CLEARANCE DELIVERY PHONE: For CD if una to ctc on FSS freq, ctc Chicago ARTCC at 630-906-8921.

AIRSPACE: CLASS C svc ctc APP CON svc 1200-0500Z‡ other times CLASS G.

RADIO AIDS TO NAVIGATION: NOTAM FILE CMI.

CHAMPAIGN (L) VORTAC 110.0 CMI Chan 37 N40°02.07' W88°16.56' at fld. 745/3E.

VEALS NDB (LOMW) 407 CM N39°57.97' W88°10.95' 318° 6.2 NM to fld. 684/3W.

ILS/DME 109.1 I-CMI Chan 28 Rwy 32R. Class IE. LOM VEALS NDB. Unmonitored when ATCT closed. LOC unusable byd 15° left of course.

ASR (1400-0200Z‡)

CHAMPAIGN N40°02.07' W88°16.56' NOTAM FILE CMI.

(L) VORTAC 110.0 CMI Chan 37 at University Of Illinois-Willard. 745/3E.

RCO 122.1R 110.0T (SAINT LOUIS RADIO)

CHICAGO

L-27C