

CONTINUED FROM PRECEDING PAGE

RADIO AIDS TO NAVIGATION: NOTAM FILE DUG.**DOUGLAS (L) VORTACW** 108.8 DUG Chan 25 N31°28.36' W109°36.12' 268° 38.7 NM to fld. 4131/13E.

DME & TACAN AZIMUTH unusable:

045°-065° byd 26 NM blo 10,000'

065°-095° byd 28 NM blo 9,500'

355°-010° byd 35 NM blo 11,300'

LIBBY (T) VORW/DME 113.6 FHU Chan 83 N31°35.38' W110°21.30' at fld. 4665/13E. NOTAM FILE FHU.

VOR unmonitored when GCA clsd.

military use: No NOTAM MP 1200-1500Z 4th Thurs of month

VOR unusable:

110°-235° byd 10 NM

DME unusable:

110°-235° byd 10 NM

FORT HUACHUCA (T) TACAN Chan 53 ARH (111.6) N31°35.13' W110°20.34' at fld. 4660/12E. NOTAM FILE

FHU. unmonitored when twr clsd.

TACAN unusable:

105°-250° byd 10 NM

120°-300° byd 20 NM

military use: No NOTAM MP 1200-1500Z 1st Thursday of month

DRAGOO NDB (MHW) 410 DAO N31°35.14' W110°20.66' at fld. 4654/13E. NOTAM FILE FHU. NDB

unmonitored when GCA closed. SHUTDOWN.

No NOTAM MP: 1500-1900Z 2nd Thurs of month

ILS 109.9 I-FHU Rwy 26. Class I E. Unmonitored when gca clsd. No NOTAM MP 1200-1500Z 2nd Thursday of month.**ASR/PAR** (0700Z Mon-0600Z Sat, except holidays, other times by NOTAM). PAR: No NOTAM MP 1200-1500Z 3rd Thursday of month.**COMM/NAV/WEATHER REMARKS:** For emerg, freq 121.5 monitored when twr clsd. USAF wx forecast avbl 1200-0300Z from Davis Monthan AFB. Radar see Terminal FLIP for Radar Minima.

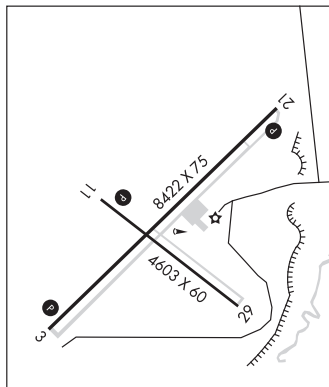
.

HELIPAD H1: H40X40 (ASPH) PERIMETER LGTS**HELIPORT REMARKS:** ACTIVATE perimeter lgts Helipad H1—CTAF.**SPRINGVILLE MUNI (JTC)(KJTC)** 1 W UTC-7 N34°07.77' W109°18.65'

7055 B NOTAM FILE PRC

RWY 03-21: H8422X75 (ASPH) S-30 MIRL**RWY 03:** PAPI(P2L)—GA 4.0° TCH 46'. Fence. 0.4% down.**RWY 21:** PAPI(P2L)—GA 3.0° TCH 35'. Fence. Rgt tfc. 0.6% up.**RWY 11-29:** H4603X60 (ASPH) S-19 MIRL**RWY 11:** PAPI(P2L)—GA 3.0° TCH 35'.**SERVICE:** FUEL 100LL, JET A+ LGT Rwy 03 PAPI does not provide obstacle clearance 2 NM byd thld. ACTIVATE MIRL Rwy 03-21, MIRL Rwy 11-29, PAPI Rwy 03, Rwy 11 and Rwy 21—CTAF. (NSTD) 5 clicks on, 7 clicks off.**AIRPORT REMARKS:** Attended Fri-Tue 1500-2300Z. For fuel after hrs call 928-245-0151. Mil tfc near arpt. Wildlife on and invof arpt. Density indicators located on rwy ends and at fuel pumps. Indicators on Rwy 3, Rwy 11 and Rwy 29 are out of svc indef.**AIRPORT MANAGER:** 928-333-5746**WEATHER DATA SOURCES:** AWOS-3PT 119.65 (928) 333-5716.**COMMUNICATIONS:** CTAF/UNICOM 122.8

② ALBUQUERQUE CENTER APP/DEP CON 132.9

CLEARANCE DELIVERY PHONE: For CD ctc Albuquerque ARTCC at 505-856-4861.**RADIO AIDS TO NAVIGATION:** NOTAM FILE SJN.**ST JOHNS (H) VORTAC** 112.3 SJN Chan 70 N34°25.44' W109°08.61' 193° 19.5 NM to fld. 6840/12E.PHOENIX
H-4K, L-5D
IAP**STANFIELD** N32°53.15' W111°54.52' NOTAM FILE PRC.**(H) VORTAC** 114.8 TFD Chan 95 048° 8.3 NM to Casa Grande Muni. 1316/12E.**RCO** 122.1R 114.8T (PRESCOTT RADIO)PHOENIX
H-4I, L-5B, A**STELLAR AIRPARK** (See CHANDLER on page 35)**SUN VALLEY** (See BULLHEAD CITY on page 33)