

ST LOUIS

CREVE COEUR (1H0) 4 NW UTC-6(-5DT) N38°43.64' W90°30.51'

462 B TPA—See Remarks NOTAM FILE STL

RWY 16-34: H4500X75 (CONC) S-30 MIRL

RWY 16: REIL. PAPI(P4L)—GA 3.0° TCH 40'. Trees. Rgt tfc.

RWY 34: REIL. PAPI(P4L)—GA 3.0° TCH 43'. Trees.

RWY 07-25: 3079X220 (TURF)

RWY 07: Tree.

RWY 25: Rgt tfc.

SERVICE: S3 FUEL 100LL, JET A LGT MIRL Rwy 16-34 preset on low ints, to increase ints and ACTIVATE REIL Rwy 16 and Rwy 34—CTAF.

AIRPORT REMARKS: Attended 1400Z±-dusk. Rwy 07-25 and Rwy 16-34 CLOSED to touch and go lds. Deer on and invof arpt. Helicopter ops on and invof arpt. Hover taxi training ops are conducted parallel to Rwy 07-25. Be alert to increased antique acft ops on and invof arpt on weekends. Rwy 16-34 restricted to acft 12,500 lbs max gross weight or less; PPR for acft exceeding 12,500 lbs call arpt manager on 314-878-6400. Ultralights not allowed. Call arpt manager for information about twy and apron strength. TPA-1112(650) and 1462(1000) for acft over 12,500 pounds. Rwy 07-25 marked with large yellow cones.

AIRPORT MANAGER: 314-878-9575

COMMUNICATIONS: CTAF/UNICOM 122.8

Ⓡ **SAINT LOUIS APP/DEP CON** 126.5

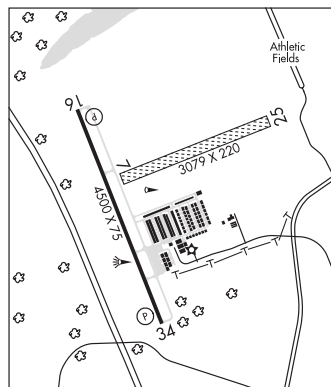
CLEARANCE DELIVERY PHONE: For CD ctc St Louis Apch at 314-890-1017.

RADIO AIDS TO NAVIGATION: NOTAM FILE STL.

FORISTELL (L) VORTACW 110.8 FTZ Chan 45 N38°41.66' W90°58.28' 080° 21.8 NM to fld. 819/5E.

TACAN AZIMUTH unusable:

265°-285° byd 35 NM blo 2,500'



ST LOUIS
L-27B, A
IAP

SPIRIT OF ST LOUIS (SUS)(KSUS) 17 W UTC-6(-5DT) N38°39.73' W90°39.12'

463 B TPA—See Remarks LRA Class IV, ARFF Index A NOTAM FILE SUS MON Airport

RWY 08R-26L: H7485X150 (CONC-GRVD) S-33, D-100, 2S-127

PCN 34 R/B/W/T HIRL CL

RWY 08R: MALS. VASI(V4R)—GA 3.0° TCH 55'. RVR-T Rgt tfc.

RWY 26L: MALS. VASI(V4L)—GA 3.0° TCH 55'. RVR-T Thld dsplcd 481'.

RWY 08L-26R: H5000X75 (ASPH-RFSC) 2D-45.5 PCN 5 F/D/X/T MIRL

RWY 08L: PAPI(P4L)—GA 3.0° TCH 41'.

RWY 26R: VASI(V4L)—GA 3.5° TCH 47'. Pole. Rgt tfc.

RUNWAY DECLARED DISTANCE INFORMATION

RWY 08L:TORA-5000 TODA-5000 ASDA-5000 LDA-5000

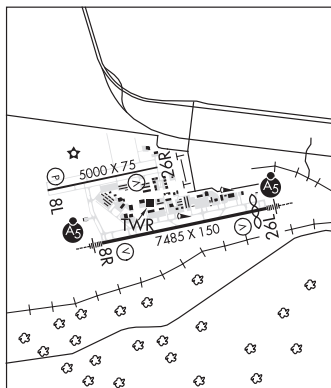
RWY 08R:TORA-7485 TODA-7485 ASDA-7414 LDA-7414

RWY 26L:TORA-7485 TODA-7485 ASDA-7485 LDA-7004

RWY 26R:TORA-5000 TODA-5000 ASDA-5000 LDA-5000

SERVICE: S4 FUEL 100LL, JET A OX 2, 4 LGT HIRL Rwy 08R-26L preset on med ints 0500-1200Z±; MIRL Rwy 08L-26R preset on low ints 0500-1200Z± to increase ints after 0500Z± and ACTIVATE MALS. Rwy 08R and Rwy 26L—CTAF.

AIRPORT REMARKS: Attended continuously. Arpt clsd to acft over 100,000 lbs, except acft 100,000-150,000 lbs for PPR 24 hrs call arpt manager 636-532-1858. Rwy 08R-26L CLOSED to touch and go landing. Numerous and intense helicopter ops on arpt. Be alert: noise sensitive areas to the south of arpt. Rwy 08L-26R and parallel and connecting twy CLOSED to Part 121 air carrier ops. Intersection C CLOSED indef between Twy E and Rwy 08L-26R. Taxilane B btn South Entrance and West Ramp and Twy Z CLSD. PPR 24 hrs for air carrier ops with more than 30 passenger seats, call arpt manager 314-568-0584. Air carrier ops over 9 passenger seats not authorized in excess of 15 min before or after scheduled arrival/departure times except prior coordination with arpt manager for ARFF 314-568-0584. Twy B between SE and NW entrance to West Ramp, Twy B NW Twy A from the distance of 200' to 700' and Twy Z not visible by twr. Bright driving range lights 2.7 NM east of Rwy 26L. All maintenance hi-power engine run-ups use ground run-up enclosure on Twy D. TPA—Rwy 08R-26L prop acft 1700 (1237); Rwy 08L-26R prop acft 1300 (837). TPA—jets 2000 (1537). Noise Abatement Procedures: For Dep stage III acft use 08L-26R 0500-1200Z±. Noise Abatement Procedure in effect: For Dep stage II acft use Rwy 08L/26R 0400-1300Z± excp PPR 636-532-2222 Mon-Fri 1400-2300Z±, other times call 314-568-0581/0584, 636-536-2877, or 636-441-9231. Flight Notification Service (ADCUS) avbl Mon-Fri 2300-1430Z±, Sat and Sun 24 hrs.



ST LOUIS
H-5D, L-27B, A
IAP, AD

CONTINUED ON NEXT PAGE

CONTINUED FROM PRECEDING PAGE

AIRPORT MANAGER: 636-532-2222

WEATHER DATA SOURCES: ASOS 134.8 (314) 890-7255. LAWRS 1200-0500Z†.

COMMUNICATIONS: CTAF 124.75 ATIS 134.8 636-532-3213 UNICOM 122.95

RCO 122.2

① SAINT LOUIS APP/DEP CON 126.5

TOWER 124.75 (1200-0500Z)‡ GND CON 121.7 CLNC DEL 133.1 CLNC DEL 121.7 (when twr clsd)

AIRSPACE: CLASS D svc 1200-0500Z‡; other times CLASS E.

RADIO AIDS TO NAVIGATION: NOTAM FILE STL.

FORISTELL (L) VORTACW 110.8 FTZ Chan 45 N38°41.66' W90°58.28' 092° 15.1 NM to fld. 819/5E.

TACAN AZIMUTH unusable:

265°-285° byd 35 NM blo 2,500'

EAVES NDB (LOMW) 227 FZ N38°40.64' W90°32.84' 261° 5.0 NM to fld. 459/1W. NOTAM FILE SUS.

SNOOP NDB (LOMW) 326 SU N38°38.34' W90°46.02' 077° 5.6 NM to fld. 468/1W. NOTAM FILE SUS.

ILS 110.55 I-SUS Rwy 08R. Class IA. LOM SNOOP NDB. LOM unmonitored.

ILS 111.1 I-FZU Rwy 26L. Class IB. LOM EAVES NDB. LOM unmonitored.

ST LOUIS DOWNTOWN HELIPOP (MO7) 0 N UTC-6(-5DT) N38°37.52' W90°10.98'

ST LOUIS

387 NOTAM FILE STL

HELIPAD H1: 37X37 (MATS)

HELIPORT REMARKS: Attended 1500-0100Z†. Svc for acct after hrs avbl for fee, ctc heliport manager. Daylight operations only, night operations not recommended. Call heliport manager before arriving for landing availability due to heavy concentration of air taxi operations. Landing from the south and east are recommended. River barge platform measures approximately 175' by 54'.

AIRPORT MANAGER: 618-337-6060

COMMUNICATIONS: UNICOM 122.8

CLEARANCE DELIVERY PHONE: For CD ctc St Louis Apmh at 314-890-1017.

ST LOUIS LAMBERT INTL (STL)(KSTL) 10 NW UTC-6(-5DT) N38°44.92' W90°22.20'

ST LOUIS

618 B LRA Class I, ARFF Index D NOTAM FILE STL

H-5D, L-27B, A
IAP, DIAP, AD

RWY 12R-30L: H11019X200 (CONC-GRVD) S-75, D-200, 2S-175,

2D-350, 2D/2D2-760 PCN 85 R/B/W/T HIRL CL

RWY 12R: MALS. TDZL. PAPI(P4L)—GA 3.0° TCH 54'. RVR-TR Thld dspcd 467'. Road. Rgt tfc.

RWY 30L: MALS. PAPI(P4R)—GA 3.0° TCH 58'. RVR-TR Thld dspcd 201'. Sign. 0.7% down.

RWY 12L-30R: H9003X150 (CONC-GRVD) S-75, D-200, 2S-175,

2D-350, 2D/2D2-760 PCN 85 R/B/W/T HIRL CL

RWY 12L: ALSF2. TDZL. REIL. PAPI(P4R)—GA 3.0° TCH 56'. RVR-TMR Bldg. 0.7% up.

RWY 30R: ALSF2. TDZL. PAPI(P4R)—GA 3.0° TCH 55'. RVR-TMR Tower. Rgt tfc. 1.0% down.

RWY 11-29: H9001X150 (CONC-GRVD) S-75, D-200, 2D-325,

2D/2D2-700 PCN 85 R/B/W/T HIRL CL

RWY 11: ALSF2. TDZL. PAPI(P4R)—GA 3.0° TCH 67'. RVR-TMR Rgt tfc. 0.7% down.

RWY 29: ALSF2. TDZL. PAPI(P4L)—GA 3.0° TCH 73'. RVR-TMR 0.7% up.

RWY 06-24: H7607X150 (CONC-GRVD) S-75, D-176, 2S-175,

2D-280, 2D/2D2-660 PCN 85 R/B/W/T HIRL

RWY 06: MALS. PAPI(P4R)—GA 3.0° TCH 51'. RVR-TR Tree.

RWY 24: MALS. PAPI(P4L)—GA 3.0° TCH 53'. RVR-TR Sign.

RUNWAY DECLARED DISTANCE INFORMATION

RWY 06: TORA-7602 TODA-7602 ASDA-7352 LDA-7352

RWY 11: TORA-9001 TODA-9001 ASDA-9001 LDA-9001

RWY 12L: TORA-9003 TODA-9003 ASDA-9003 LDA-9003

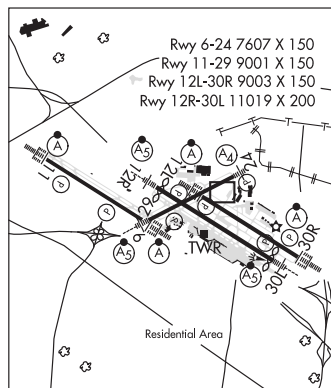
RWY 12R: TORA-11019 TODA-11019 ASDA-11019 LDA-10552

RWY 24: TORA-7602 TODA-7602 ASDA-7602 LDA-7602

RWY 29: TORA-9001 TODA-9001 ASDA-9001 LDA-9001

RWY 30L: TORA-11019 TODA-11019 ASDA-11019 LDA-10819

RWY 30R: TORA-9003 TODA-9003 ASDA-9003 LDA-9003



CONTINUED ON NEXT PAGE