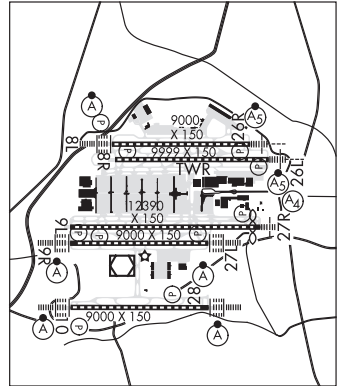


HARTSFIELD — JACKSON ATLANTA INTL (ATL)(KATL) 7 S UTC-5(-4DT) N33°38.20' W84°25.67'

ATLANTA
H-9A, 12F, L-18J, A
IAP, AD

1026 B LRA Class I, ARFF Index E NOTAM FILE ATL
RWY 09L-27R: H12390X150 (CONC-GRVD) S-120, D-200, 2D-360 PCN 62 R/A/W/T HIRL CL
RWY 09L: PAPI(P4R)—GA 3.0° TCH 71'. RVR-TMR Tank. 0.3% down.
RWY 27R: MALS. PAPI(P4R)—GA 3.0° TCH 72'. RVR-TMR Thld dsplcd 500'. Tree. 0.4% up.
RWY 08R-26L: H9999X150 (CONC-GRVD) S-120, D-200, 2D-360 PCN 74 R/A/W/T HIRL CL
RWY 08R: PAPI(P4L)—GA 3.0° TCH 67'. RVR-TMR Tree. 1.0% down.
RWY 26L: MALS. PAPI(P4L)—GA 3.0° TCH 63'. RVR-TMR Tree. 0.4% down.
RWY 08L-26R: H9000X150 (CONC-GRVD) S-120, D-200, 2D-360 PCN 105R/B/W/T HIRL CL
RWY 08L: ALSF2. TDZL. PAPI(P4L)—GA 3.0° TCH 70'. RVR-TMR Tree. 0.6% down.
RWY 26R: MALS. TDZL. PAPI(P4L)—GA 3.0° TCH 69'. RVR-TMR Tree.
RWY 09R-27L: H9000X150 (CONC-GRVD) S-120, D-200, 2D-360 PCN 68 R/A/W/T HIRL CL
RWY 09R: ALSF2. TDZL. PAPI(P4L)—GA 3.0° TCH 70'. RVR-TMR Pole.
RWY 27L: ALSF2. TDZL. PAPI(P4R)—GA 3.0° TCH 79'. RVR-TMR Tree. 0.5% up.
RWY 10-28: H9000X150 (CONC-GRVD) S-75, D-209, 2D-600, 2D/2D2-900 PCN 74 R/A/W/T HIRL CL
RWY 10: ALSF2. TDZL. PAPI(P4R)—GA 3.0° TCH 69'. RVR-TMR Tree. Rgt ttc.
RWY 28: ALSF2. TDZL. PAPI(P4R)—GA 3.0° TCH 72'. RVR-TMR Tower.



LAND AND HOLD—SHORT OPERATIONS

LDG RWY	HOLD—SHORT POINT	AVBL LDG DIST
RWY 08L	TWY B13	8490
RWY 09R	TWY J	8627
RWY 26R	TWY H	8600
RWY 27L	TWY P	8600

RUNWAY DECLARED DISTANCE INFORMATION

RWY 08L:TORA-9000	TODA-9000	ASDA-8800	LDA-8800
RWY 08R:TORA-9999	TODA-10999	ASDA-9999	LDA-9999
RWY 09L:TORA-12390	TODA-12390	ASDA-11730	LDA-11730
RWY 09R:TORA-9000	TODA-9000	ASDA-9000	LDA-9000
RWY 10: TORA-9000	TODA-9000	ASDA-9000	LDA-9000
RWY 26L:TORA-9999	TODA-9999	ASDA-9999	LDA-9999
RWY 26R:TORA-9000	TODA-9000	ASDA-8500	LDA-8500
RWY 27L:TORA-9000	TODA-9000	ASDA-8865	LDA-8865
RWY 27R:TORA-12390	TODA-12390	ASDA-12190	LDA-11690
RWY 28: TORA-9000	TODA-9000	ASDA-9000	LDA-9000

SERVICE: S4 FUEL 100, 100LL, JET A OX 1, 2, 3, 4 LGT PAPI Rwy 26L unusable byd 7° left and right of RCL. PAPI Rwy 26R unusable byd 6° left and 7° right of RCL. Rotating bcn located S of Twy R7, N of Twy SJ2 near fire station.

NOISE: Noise & opns monitoring system (NOMS) program in effect; call the Atlanta Dept of Aviation 770-43-NOISE or 770-436-6473 for more info.

CONTINUED ON NEXT PAGE

CONTINUED FROM PRECEDING PAGE

AIRPORT REMARKS: Attended continuously. Group VI acft (C-5; AN-124 and AN-125) with a wingspan of greater than 214' are restricted from using Twy F east of Ramp 5 north and west of Twy D. All acft with wingspans greater than 214' are rqr to use taxi speeds not greater than 15 mph on Twy A, Twy L, Twy M, and Twy SJ. When acft with wingspans greater than 214' are present on the fld, all other acft must adhere to the twy cntrln on Twy L and Twy M, Twy E and Twy F, and Twy SC and Twy SJ btm Twy SG and Twy R due to separation btm the parallel twys. Acft with wingspans greater than 214' should exp to use Rwy 09L-27R and Rwy 09R-27L. Two acft with wingspans greater than or equal to 225' may not taxi simultaneously on adj parallel twys Twy L and Twy M except west of Twy L7 at speeds less than 15 mph. Acft with wingspan greater than 171' are rstd from using Twy V. Acft with wingspan greater than 171' are rqr to use taxi speeds less than 15 mph when passing acft with wingspan greater than 214' on Twy L and Twy M (east of Twy L7). No acft with wingspan greater than 213' may pass another acft with wingspan greater than or equal to 225' on Twy L and Twy M east of Twy L7. No acft with wingspan greater than or equal to 225' may taxi on Twy M btm Twy L14 and Twy L16, Twy N btm Twy P and Twy SC, and Twy N btm Twy U and Twy K. ASDE-X in use. Operate transponders with altitude reporting mode and ADS-B (if equipped) enabled on all airport surfaces. All rwys, touch and go operations, low approaches, and practice instrument approaches not permitted. Preferential rwy use in effect, expect to use Rwys 08R-26L, 09L-27R for depts; Rwys 08L-26R, 09R-27L are used primarily for arrivals. Rwy 09L departures can expect intersection departure from M2 with rwy remaining 11,440' (TORA/TODA) and 10,780' (ASDA). Runups are permitted at various sites, coord use of city fac, movement areas, allowable non-movement areas with Dept of Avn opns, 404-787-6095; and coord the use of the airlines facs with them. Ldg fee. Flight Notification Service (ADCUS) avbl.

AIRPORT MANAGER: 404-530-6600

WEATHER DATA SOURCES: ASOS (404) 559-5166 LLWAS. TDWR.

COMMUNICATIONS: D-ATIS ARR 119.65 (404) 763-7988. D-ATIS DEP 125.55 UNICOM 122.95

Ⓡ ATLANTA APP CON 127.9 (090°-269°)

Ⓡ ATLANTA DEP CON 121.225 (Rwy 10-28) 125.65 (Rwys 09L-27R, 09R-27L) 133.475 (Rwys 08L-26R, 08R-26L)

ATLANTA TOWER 119.1 (Rwy 08L-26R) 119.3 (Rwy 09R-27L) 119.5 (Rwy 10-28) 123.85 (Rwy 09L-27R) 125.325 (Rwy 08R-26L)

GND CON 121.65 (Rwy 10-28) 121.75 (Rwys 09L-27R, 09R-27L) 121.9 (Rwys 08R-26L, 08L-26R)

CLNC DEL 118.1

CPDLC (LOGON KUSA)

PDC

AIRSPACE: CLASS B See VFR Terminal Area Chart.

RADIO AIDS TO NAVIGATION: NOTAM FILE ATL.

ATLANTA (H) VORTACW 116.9 ATL Chan 116 N33°37.74' W84°26.10' at fld. 1040/5W.

TACAN DME unusable:

171°-181° byd 28 NM blo 4,000'

TACAN AZIMUTH unusable:

036°-199° blo 5,000'

200°-207°

208°-340° blo 5,000'

341°-035°

ILS/DME 109.3 I-HFW Chan 30 Rwy 08L. Class IIIE. LOC unusbl byd 15° left and right of course.

ILS/DME 109.9 I-ATL Chan 36 Rwy 08R. Class IE. LOC unusable byd 12° right of course.

ILS/DME 110.5 I-HZK Chan 42 Rwy 09L. Class ID. LOC unusable byd 18° right of course.

ILS/DME 108.9 I-FUN Chan 26 Rwy 09R. Class IIIE. LOC unusable byd 11° left and right of course.

ILS/DME 111.55 I-OMO Chan 52(Y) Rwy 10. Class IIID. LOC unusable throughout zone 5 due to structure at 0.67 NM LOC restricted byd 20 degrees right of course

ILS/DME 108.7 I-BRU Chan 24 Rwy 26L. Class IT.

ILS/DME 110.1 I-GXZ Chan 38 Rwy 26R. Class IE.

ILS/DME 108.5 I-FSQ Chan 22 Rwy 27L. Class IIE. LOC unusable byd 14° left of course

ILS 111.3 I-AFA Rwy 27R. Class IT.

ILS/DME 111.75 I-PKU Chan 54(Y) Rwy 28. Class IIE.

COMM/NAV/WEATHER REMARKS: Be alert to rwy crossing clearances. Readback of all rwy holding instructions is required. Dual VHF comm rqr for Simultaneous Close Parallel ILS PRM Apchs. Rwy 09L-27R and Rwy 09R-27L, mnt 132.55, Rwy 10-28, mnt 133.425, Rwy 08L-26R and Rwy 08R-26L mnt 126.9.