

PORTLAND INTL (PDX)(KPD) P (ANG) 4 NE UTC-8(-7DT) N45°35.32' W122°35.81'

SEATTLE

31 B LRA Class I, ARFF Index E NOTAM FILE PDX

H-1B, L-1C

RWY 10L-28L: H11000X150 (CONC-GRVD) S-200, D-200, 2S-175,

IAP, DIAP, AD

2D-360 PCN 89 R/D/W/T HIRL CL

RWY 10R: ALSF2. TDZL. PAPI(P4R)—GA 3.0° TCH 71'. RVR-TMR Rgt tfc.

RWY 28L: MALSR. PAPI(P4L)—GA 3.0° TCH 72'. RVR-TMR

RWY 10L-28R: H9825X150 (ASPH-GRVD) S-200, D-200, 2S-175,

2D-400 PCN 133F/D/W/T HIRL CL

RWY 10L: MALSR. PAPI(P4L)—GA 3.0° TCH 51'. RVR-TMR Thld dsplcd 1290'.

RWY 28R: MALSR. PAPI(P4R)—GA 3.0° TCH 70'. RVR-TMR Thld dsplcd 535'. Road. Rgt tfc.

RWY 03-21: H6000X150 (ASPH-GRVD) S-120, D-250, 2S-175,

2D-380 PCN 82 F/D/X/T MIRL

RWY 03: REIL. PAPI(P4L)—GA 3.3° TCH 60'.

RWY 21: REIL. PAPI(P4R)—GA 3.6° TCH 32'. Road.

RUNWAY DECLARED DISTANCE INFORMATION

RWY 03: TORA-6000 TODA-6000 ASDA-6000 LDA-6000

RWY 10L: TORA-9825 TODA-9825 ASDA-9825 LDA-8535

RWY 10R: TORA-11000 TODA-11000 ASDA-11000 LDA-11000

RWY 21: TORA-6000 TODA-6000 ASDA-6000 LDA-6000

RWY 28L: TORA-11000 TODA-11000 ASDA-11000 LDA-11000

RWY 28R: TORA-9825 TODA-9825 ASDA-9825 LDA-9290

ARRESTING GEAR/SYSTEM

RWY 10R TYPE-H BAK-12B(B) (1625).

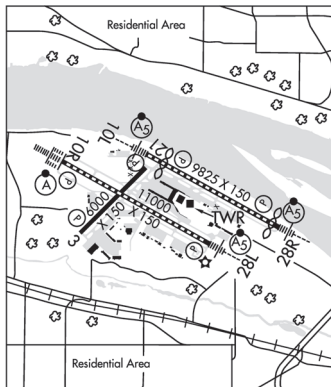
TYPE-H BAK-12B(B) (2000'). **RWY 28L**

SERVICE: S4 FUEL 100LL, JET A OX 1, 2, 3, 4 LGT RWY 03 PAPI unusbl byd 4 deg left and rgt of RCL and byd 5 NM unusbl. **MILITARY—** JASU 4(A/M32A-86) (MC-11) 1(MA-1A) FUEL A (C503-331-4220). J8 (Mil) (NC-100LL, A) FLUID LHOXRB OIL O-128-133-148(Mil) **TRAN ALERT** No tran svc avbl.

NOISE: NS ABTMT procedures in effect call noise office, 503-460-4100. Rwy 28L arr are noise sensitive, exp apch to Rwy 28R with transition to Rwy 28L.

AIRPORT REMARKS: Attended continuously. Arpt clsd to non-pwrd acft exc in emerg. Migratory and wintering flocks of large waterfowl on and in/ov arpt. Heavy seagull act Sep-Apr, exp high number of birds yr round, check lcl advisories. ASSC in use. Operate transponders with altitude reporting mode and ADS-B (if equipped) enabled on all airport surfaces. Rwy 28R perimeter road at 200' from rwy thld and 408' rgt from rwy extdd cntrln. Unclt tfc at Pearson Flt Vancouver WA, 3 NM west of Rwy 10L thld on extdd cntrln. Rwy 21 clsd to Height Group IV acft with cockpit to wheel hgt greater than 22'. Rwy 28R 60' levee road lctd aprxly parallel to rwy at 200' fm thr and 507' rt fm rwy extndd cntrln. Twy W clsd to acft with wingspan gtr than 118 ft unless under tow. Twy K btn Twy A5 and Twy V clsd to acft wingspan more than 168 ft. Twy M btn Twy E and Twy T clsd to acft wingspan more than 118 ft. Twy A3 btn Twy A and the GA ramp clsd to acft with wingspan gtr than 135 feet unless under tow. At the west end arm/dearm area on Twy C no acft of any type may taxi past the arm/dearm area while it is being used. Acft authorized to utilize the NW ramp will be towed to/from this ramp. Area of Twy T btn M and E3 not vsb fm twr. Twy T btn exits B5 and B6 clsd to acft with wingspan gtr than 118 ft. Twy C3 clsd to acft with wingspan equal to or gtr than 79 ft. Twy V clsd to acft with wingspan greater than 168 ft. Acft with wingspan greater than 118 ft prohibited fm turning W onto Twy A fm Twy V unless under tow. Acft with wingspan greater than 118' are prohibited from turning eastbound on Twy C from southwestbound on Twy F unless under tow. Twy E3 clsd to acft with wingspan greater than 198'. Twy T btn Twy E3 and Twy B5 clsd to acft with wingspan gtr than 198 ft. Twy C between Twy C6 and Twy C8 clsd to acft with wingspan greater than 180'. Twy T btn Twy E2 and Twy E3 clsd to acft wingspan more than 118 ft. Twy K btn Twy V and Twy A4 clsd to acft wingspan more than 118 ft. 180° turns by acft weighing in excess of 12,500 lbs prohibited on Rwy 10L-28R, Rwy 03-21 and all twys. PDX has fac constraints that lmt its ability to accommodate divd flts and mntn the arpt safe opn dur ireg ops. Acft ops shud ctc the arpt duty mgr at (503) 460-4236 to coord divd flts exc in the case of a declared in-flt emerg. Ldg fee. Coml acft and ops of acft with an FAA certified max gross ldg wt that exceeds 10,000 lbs are rqrtd to pay a ldg fee. Possible Rwy 28L glideslope fluctuation prior to addum when weather is greater than 800/2. Flight Notification Service (ADCUS) avbl.

MILITARY REMARKS: ANG See FLIP AP/1 for Supplementary Arpt Information. Hazardous bird cond exist. Phase I May-Oct, Phase II Nov-Apr. Current bird watch cond are not reported on ATIS. PPR/Official Business Only. Base ops opr 1500-2300Z Mon-Fri exc hol, DSN 638-4390, C503-335-4390. Ctc Base OPS 15 mins prior to ldg and after departing on 281.2. Tran quarters not avbl. **CAUTION:** Obst lgtg is not NVD compatible. NVD not authorized while airborne in/ov afld. NSTD yellow park spot designators and equipment tool box location painted on ramp. Please ctc base ops or req follow me if not familiar with Portland ANG base park procedures.



CONTINUED ON NEXT PAGE

CONTINUED FROM PRECEDING PAGE

AIRPORT MANAGER: 503-415-6195

WEATHER DATA SOURCES: ASOS (503) 493-7687 WSP.

COMMUNICATIONS: D-ATIS 128.35 269.9 (503) 493-7557 UNICOM 122.95

® APP/DEP CON 118.1 284.6 (100°-279° HIGH) 124.35 299.2 (280°-099°) 126.9 (APCH FINAL)

TOWER 118.7 257.8 (Rwy 10L-28R) 123.775 251.125 (Rwy 03-21 and Rwy 10R-28L)

GND CON 121.9 348.6 CLNC DEL 120.125 318.1

AFR OPNS 138.45 252.8 ANG COMD POST 288.9 (Stump Town)

ANG OPNS 280.5 PORTLAND GUARD OPS 281.2

CPDLC (LOGON KUSA)

PDC

AIRSPACE: CLASS C svc ctc APP CON.

VOR TEST FACILITY (VOT) 111.0

RADIO AIDS TO NAVIGATION: NOTAM FILE PDX.

BATTLE GROUND (H) VORTACW 116.6 BTG Chan 113 N45°44.87' W122°35.49' 160° 9.6 NM to fld. 253/21E.

TACAN AZIMUTH & DME unusable:

035°-085° byd 35 NM blo 10,000'

COLUMBIA (H) TACAN Chan 29 CBU (109.2) N45°35.32' W122°36.68' at fld. 22/20E.

TACAN unusable:

020°-030° byd 30 NM blo 9,500'

030°-050° byd 20 NM blo 9,500'

120°-130° byd 15 NM blo 8,500'

155°-250° byd 15 NM blo 10,500'

250°-270° byd 20 NM blo 8,500'

ILS/DME 111.3 I-VDG Chan 50 Rwy 10L. Class IT. DME also serves Rwy 28R.

ILS/DME 110.5 I-PDX Chan 42 Rwy 10R. Class IIIE. DME also serves Rwy 28L.

LOC/DME 108.9 I-GPO Chan 26 Rwy 21.

ILS/DME 110.5 I-JMJ Chan 42 Rwy 28L. Class IT. DME also serves Rwy 10R. Autocoupled apch not applicable b/w 880' MSL (2.4NM from thld).

ILS/DME 111.3 I-IAP Chan 50 Rwy 28R. DME also serves Rwy 10L.

COMM/NAV/WEATHER REMARKS: PDX monitors 121.5 for McMinnville (MMV).

PORTLAND-HILLSBORO (HIO)(KHIO) 15 SW UTC-8(-7DT) N45°32.53' W122°57.04'

SEATTLE

208 B TPA—See Remarks LRA NOTAM FILE HIO MON Airport

H-1B, L-1C

RWY 13R-31L: H6600X150 (ASPH) S-50, D-70, 2S-89, 2D-110

IAP AD

HIRL

RWY 13R: MALSR. PAPI(P4L)—GA 3.0° TCH 49'. RVR-T

RWY 31L: REIL. PAPI(P4L)—GA 3.0° TCH 51'. RVR-R Tree.

RWY 02-20: H3820X75 (ASPH) S-54.5, D-74, 2D-139

PCN 20 F/C/X/T MIRL

RWY 02: PAPI(P4R)—GA 3.0° TCH 39'. Road. Rgt tfc.

RWY 20: PAPI(P4L)—GA 3.0° TCH 38'. Tree.

RWY 13L-31R: H3600X60 (ASPH) S-28 PCN 10 F/D/Y/T MIRL

RWY 13L: PAPI(P4L)—GA 3.0° TCH 27'.

RWY 31R: PAPI(P4L)—GA 3.0° TCH 26'. Rgt tfc.

LAND AND HOLD—SHORT OPERATIONS

LDG RWY	HOLD—SHORT POINT	AVBL LDG DIST
RWY 13R	02-20	4922

SERVICE: S4 FUEL 100LL, JET A OX 1, 2, 4 LGT When ATCT CLSD

ACTVT MALSR RWY 13R; PAPI RWY 02 and PAPI RWY 20—CTAF.

RWY 13L PAPI UNUSBL beyond 8 DEG L and R of RWY CNTRLN.

RWY 31R PAPI UNUSBL beyond 8 DEG L and R of RWY CNTRLN.

NOISE: NS ABTMT procedures in effect call 503-460-4100 or

800-938-6647. Noise sensitive areas border arpt west, south and

east. Rwy 31L is preferred rwy for NS ABTMT. Avoid low level over fits of residential areas whenever possible. Nighttime

touch and gos are discouraged 0600-1400Z‡.

AIRPORT REMARKS: Attended 1400-0600Z‡. Rwy 13R-31L clsd to touch and go ldgs between 0600-1400Z‡. Be alert for

bird act in vicinity Nov to May. Glider ops 5 NM northwest during dalgt hrs Mar-Oct. TPA—1208 (1000), turbine and

large acft 1708 (1500). Rwy 13R run-up area not visible from twr. Rwy 02-20 has 150' x 75' paved blast pads at both

ends. Rwy 13R-31L has 200' x 150' paved blast pads at both ends. Be alert, extv helicopter training operations to Twy

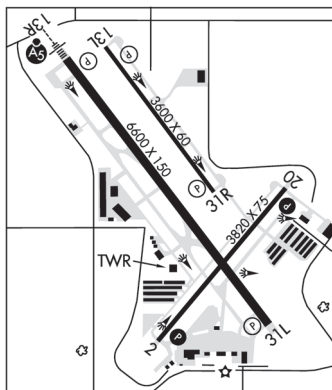
A, Twy B & Twy D. Flight Notification Service (ADCUS) avbl, 2 hr advance ntc rqr Mon-Sat 0100-1400Z‡ and 24 hrs

Sun and hol. Coml acft and ops of acft with an FAA certified maximum gross ldg weight that exceeds 10,000 lbs are rqr

to pay a ldg fee. Ldg fee. Fee based CSTMS facility \$60 single engine, \$175 twin engine, \$500 turbine. CSTMS avbl

2000-0400Z‡ 503-693-1069, otherwise CSTMS Fit Notification (ADCUS) avbl, advance coordination rqr

503-326-3230.



CONTINUED ON NEXT PAGE