

MITCHELL MUNI (MHE)(KMHE) 3 N UTC-6(-5DT) N43°46.49' W98°02.32'
1304 B NOTAM FILE MHE

OMAHA
H-21, L-12H
IAP

RWY 13-31: H6700X100 (ASPH) S-55, D-90, 2S-114, 2D-120 HIRL

RWY 13: REIL. PAPI(P4L)—GA 3.0° TCH 45'.

RWY 31: MALSR. PAPI(P4L)—GA 3.0° TCH 61'.

RWY 18-36: H5513X100 (ASPH-PFC) S-35, D-90, 2S-114, 2D-110
MIRL 0.4% up S

RWY 18: REIL. PAPI(P4L)—GA 3.0° TCH 55'.

RWY 36: PAPI(P4L)—GA 3.0° TCH 50'.

SERVICE: S4 **FUEL** 100LL, JET A **LGT** ACTIVATE MALSR Rwy 31; REIL
Rwy 13 and Rwy 18; PAPI Rwy 13, 31, 18 and 36; HIRL Rwy 13-31;
MIRL Rwy 18-36—CTAF.

AIRPORT REMARKS: Attended 1400-0000Z. For attendant other hrs call
605-996-1228. Fuel avbl 24 hrs a day. Ultralight activity on and in/ov
arpt. Migratory birds on and in/ov arpt.

AIRPORT MANAGER: 605-770-4594

WEATHER DATA SOURCES: ASOS 124.175 (605) 995-5803. HIWAS 109.2
MHE.

COMMUNICATIONS: CTAF/UNICOM 122.8

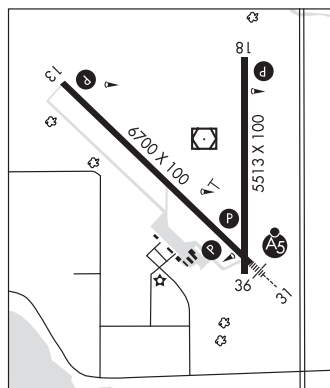
RCO 122.3 (HURON RADIO)

AIRSPACE: CLASS E

RADIO AIDS TO NAVIGATION: NOTAM FILE MHE.

(L) **VORW/DME** 109.2 MHE Chan 29 N43°46.62' W98°02.25' at fld. 1298/4E. **HIWAS.**

ILS 109.7 I-LPA Rwy 31. Class IT. Glideslope unusable for autopilot coupled apch blo 2,174' MSL. Unmonitored.



MOBRIDGE MUNI (MBG)(KMBG) 1 NE UTC-6(-5DT) N45°32.78' W100°24.38'
1716 B NOTAM FILE MBG

TWIN CITIES
L-14F
IAP

RWY 12-30: H4410X75 (ASPH) S-12.5 MIRL

RWY 12: PAPI(P2L)—GA 3.0° TCH 30'. Ground.

RWY 30: PAPI(P2R)—GA 3.0° TCH 30'. P-line.

RWY 17-35: 2399X250 (TURF) 1.0% up N

RWY 17: Road.

SERVICE: S2 **FUEL** 100LL, JET A, MOGAS **LGT** ACTIVATE MIRL Rwy
12-30—CTAF.

AIRPORT REMARKS: Attended Mon-Fri 1500-0000Z, Sat on call
1500-0000Z FBO closed Sun. For jet fuel pre-arrange with airport
manager 605-216-6565. Cold temperature restricted arpt. Altitude
correction required at or below -31C. Rwy 17-35 CLOSED winter
months. Wildlife on and in/ov arpt. Rwy 17-35 sfc some gopher holes.

AIRPORT MANAGER: 605-216-6565

WEATHER DATA SOURCES: ASOS 121.425 (605) 845-2056.

COMMUNICATIONS: CTAF/UNICOM 122.8

RCO 122.35 (HURON RADIO)

GCO 121.725 (4 clicks to MINNEAPOLIS CENTER)

RADIO AIDS TO NAVIGATION: NOTAM FILE HON.

DUPREE (H) VORW/DME 116.8 DPR Chan 115 N45°04.69'

W101°42.90' 053° 62.1 NM to fld. 2501/10E. **HIWAS.**

