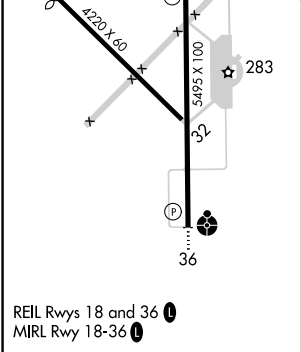
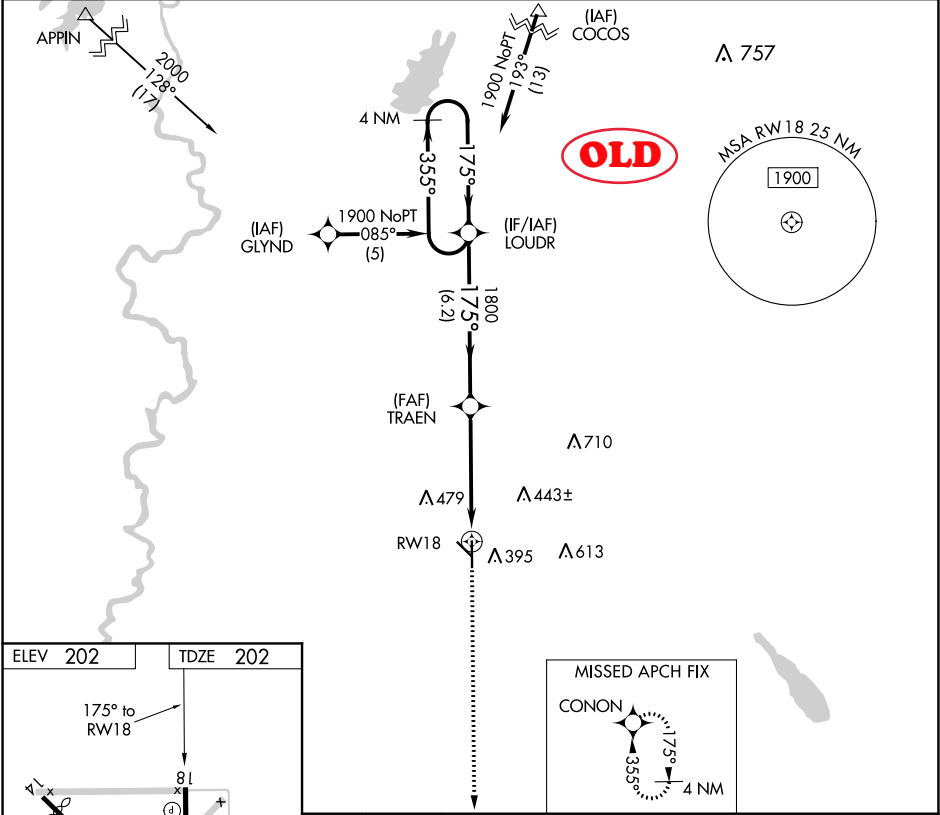


APP CRS	Rwy Idg	5495
175°	TDZE	202
	Apt Elev	202

RNAV (GPS) RWY 18
BEAUREGARD RGNL (DRI)

	DME/DME RNP-0.3 NA. Visibility reduction by helicopters NA. When local altimeter setting not received, use Fort Polk altimeter setting and increase all MDA 60 feet, and LNAV visibility Cat C and D ¼ mile.	MISSED APPROACH: Climb to 1700 direct CONON and hold.
--	--	---

AWOS-3PT 118.225	POLK APP CON 123.7 261.3	UNICOM 122.8 (CTAF)
---------------------	-----------------------------	------------------------



1700	CONON	VGSI and descent angles not coincident (VGSI Angle 3.00/TCH 50).		4 NM Holding Pattern
		TRAEN	1800	1900
		RWY 18	175°	355°
			3.04° TCH 40	
		4.8 NM	6.2 NM	
CATEGORY	A	B	C	D
LNAV MDA	680-1	478 (500-1)	680-1¼ 478 (500-1¼)	680-1½ 478 (500-1½)
CIRCLING	720-1	518 (600-1)	720-1½ 518 (600-1½)	780-2 578 (600-2)

SC-4, 08 OCT 2020 to 05 NOV 2020

SC-4, 08 OCT 2020 to 05 NOV 2020

