

VOR/DME VCT

109.0

Chan 27

APP CRS

127°

Rwy Idg

9111

TDZE

115

Apt Elev

115

VOR RWY 13L

VICTORIA RGNL (VCT)

V

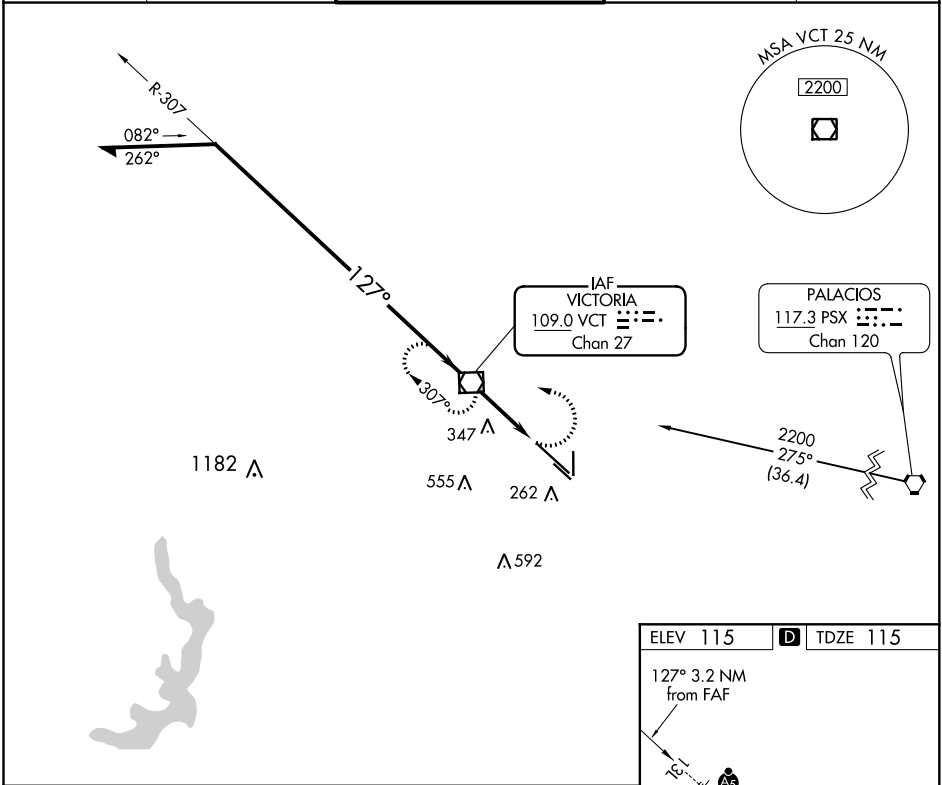
A

VDP NA when using Port Lavaca altimeter setting. When local altimeter setting not received, use Port Lavaca altimeter setting and increase all MDA 60 feet. Increase S-13L Cats C/D/E visibility to 1½ mile. For inop MALSR, increase S-13L Cat C/D/E visibility to 1½ mile. For inop MALSR, when using Port Lavaca altimeter setting, increase S-13L Cat C/D/E visibility to 1½ mile.

MALSR

MISSED APPROACH:
Climbing left turn to 2200 direct VCT VOR/DME and hold, continue climb-in-hold to 2200.

ATIS	HOUSTON CENTER	VICTORIA TOWER ★	GND CON	UNICOM
119.025	135.05 353.6	126.075 (CTAF) 0 257.95	120.525 239.25	122.7



Remain within 15 NM

2200

307°

127°

1300

VCT VOR/DME

VCT 2

3.31°

TCH 53

VCT 3.2

2200

VCT

CATEGORY

A

B

C

D

E

S-13L

600-½

485 (500-½)

600-1

485 (500-1)

CIRCLING

600-1

485 (500-1)

600-1½

680-2

NA

2 NM

1.2 NM

ELEV 115

D

TDZE 115

127° 3.2 NM from FAF

120

9111 X 130

TWR 184

36

31R

4908 X 75

81

36

31L

MIRL Rwy 18-36
REIL Rwy 18 and 36
HIRL Rwy 13L-31R

FAF to MAP 3.2 NM

Knots	60	90	120	150	180
Min:Sec	3:12	2:08	1:36	1:17	1:04

SC-5, 08 OCT 2020 to 05 NOV 2020

SC-5, 08 OCT 2020 to 05 NOV 2020

