

WAAS  
CH **82618**  
**W15A**

APP CRS  
**151°**

Rwy Idg  
TDZE **121**  
Apt Elev **121**

6001

**121**

**121**

RNAV (GPS) RWY 15

INCOLN RGNL/KARL HARDER FIELD (LHM)

RNP APCH.

▼

▲

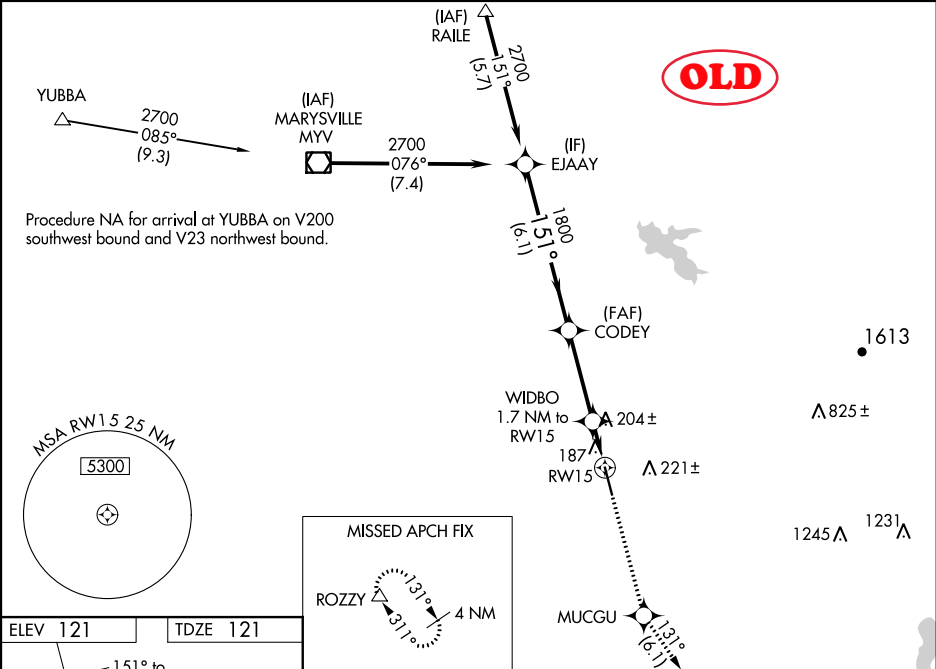
For uncompensated Baro-VNAV systems, LNAV/VNAV NA below -15°C or above 48°C. VDP and Baro-VNAV NA when using Beale AFB altimeter setting. When local altimeter setting not received, use Beale AFB altimeter setting and increase all DA/MDA 40 feet. For Inop ALS when using Beale AFB altimeter setting, increase LNAV Cat D visibility to 1¼.

MALSR

AS

MISSED APPROACH:  
Climb to 2500 direct MUCGU and on track 131° to ROZZY and hold.

AWOS-3 <b>124.25</b>	NORCAL APP CON <b>125.4 259.1</b>	UNICOM <b>123.0 (CTAF) 0</b>
-------------------------	--------------------------------------	---------------------------------



	EJAAY	CODEY	WIDBO	MUCGU	ROZZY
	2700	1800	1.7 NM to RW15	2500	tr 131°
	151°	1800	*0.9 NM to RW15		
	GP 3.00° TCH 46		*680		
	6.1 NM	3.4 NM	0.8 NM	0.9 NM	
CATEGORY	A	B	C	D	
LPV DA	321-1½	200 (200-½)			
LNAV/VNAV DA	452-¾	331 (400-¾)			
LNAV MDA	460-1½	339 (400-½)		460-1 339 (400-1)	
CIRCLING	520-1 399 (400-1)	580-1 459 (500-1)	580-1½ 459 (500-1½)	680-2 559 (600-2)	



