

OCEAN CITY, MARYLAND

AL-5284 (FAA)

20226

APP CRS	Rwy Idg	3204
032°	TDZE	11
	Apt Elev	11

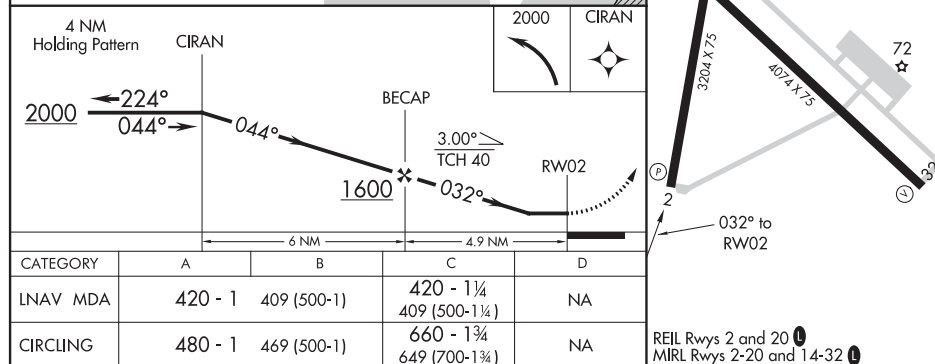
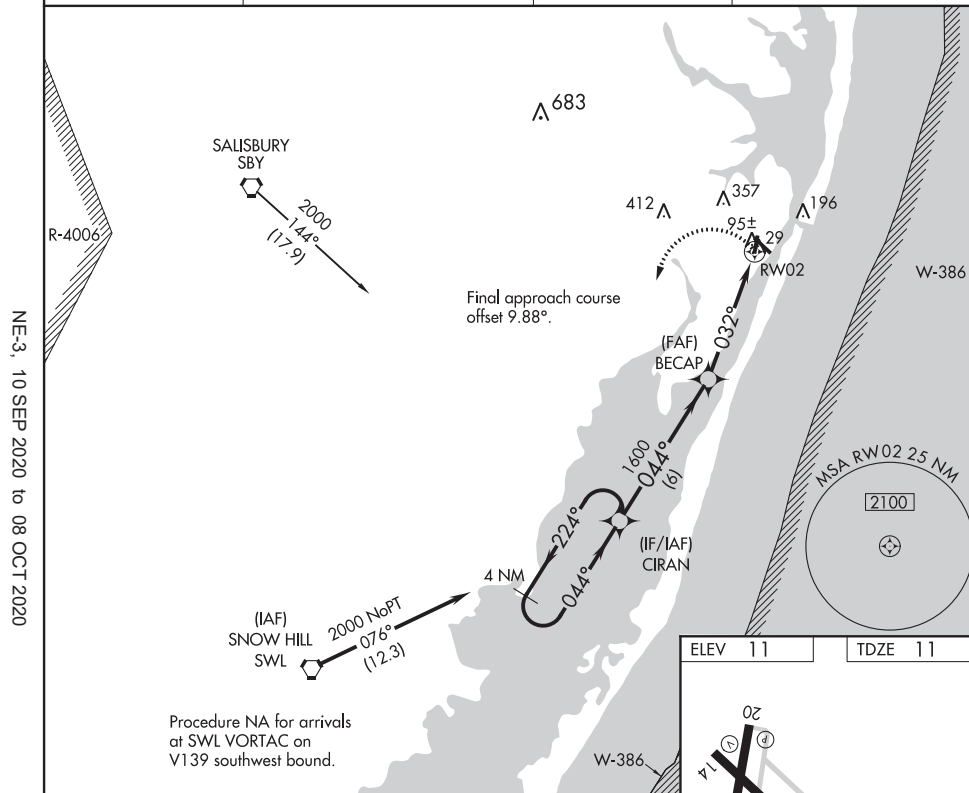
**OLD**
**RNAV (GPS) RWY 2**  
 OCEAN CITY MUNI (OXB)

RNP APCH.

When local altimeter setting not received, use Salisbury altimeter setting and increase all MDAs 60 feet and visibility LNAV Cat C ½ SM and Circling Cat C ½ SM. Straight-in Rwy 2 NA at night. Circling Rwy 2, 14, 20 NA at night. Rwy 2 helicopter visibility reduction below 1 SM NA.

MISSED APPROACH:  
Climbing left turn to 2000  
direct CIRAN and hold.

ASOS 119.025	PATUXENT APP CON ★ 127.95 314.0	CLNC DEL 121.75	UNICOM 123.05 (CTAF) 0
-----------------	------------------------------------	--------------------	---------------------------



OCEAN CITY, MARYLAND

38°19'N-75°07'W

Orig-C 13SEP18

**RNAV (GPS) RWY 2**  
 OCEAN CITY MUNI (OXB)

KOXB  
OCEAN CITY MUNI  
OCEAN CITY  
MD  
NEW CIRCLING AREA  
1:100,000

