

GALVESTON, TEXAS

AL-164 (FAA)

20142

WAAS CH 82301 W18A	APP CRS 179°	Rwy Idg TDZE Apt Elev	6001 6 6
--	------------------------	-----------------------------	-------------------------------------

OLD**RNAV (GPS) RWY 18**
SCHOLES INTL AT GALVESTON (GLS)

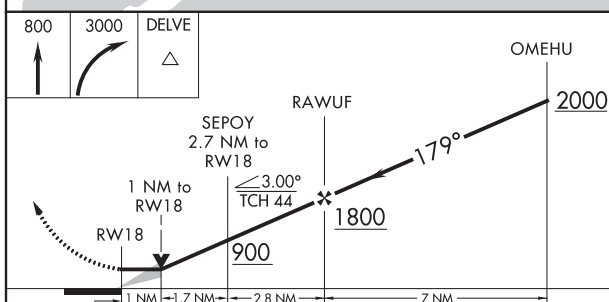
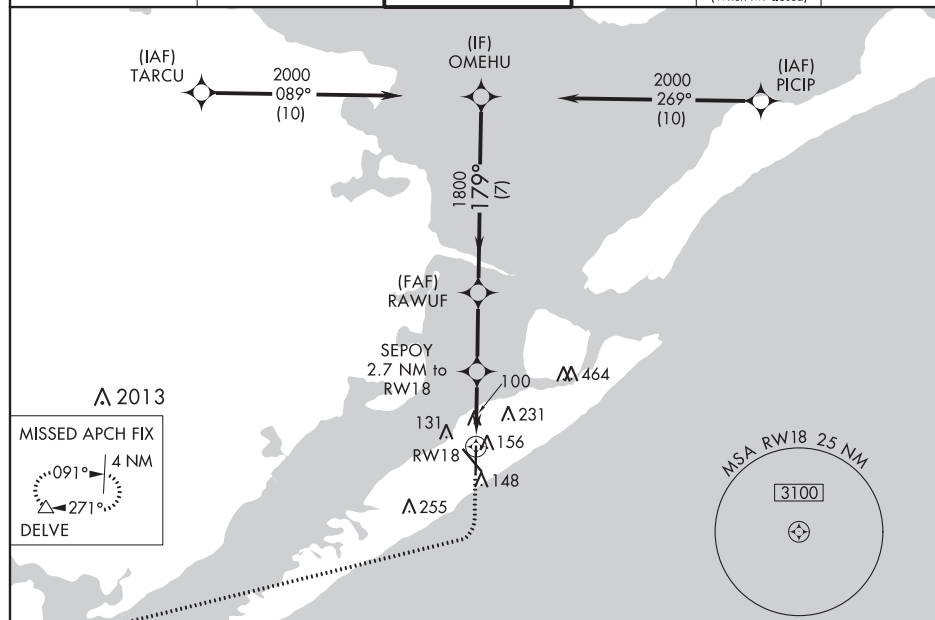
RNP APCH.



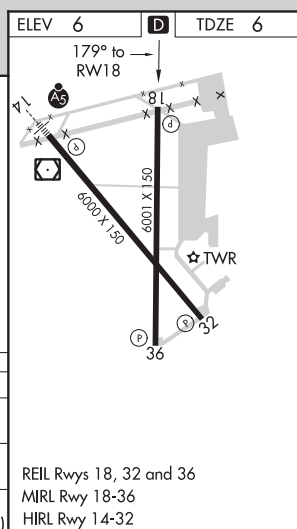
Circling NA east of Rwy 18 and northeast of Rwy 32.

MISSED APPROACH: Climb to 800 then climbing right turn to 3000 direct DELVE and hold.

ASOS 119.275	HOUSTON APP CON 134.45 284.0	GALVESTON TOWER ★ 120.575 (CTAF) 0	GND CON 118.625	CLNC DEL 135.35 (When twr closed)	UNICOM 123.05
------------------------	--	---	---------------------------	--	-------------------------



CATEGORY	A	B	C	D	E
LP MDA	360-1	354 (400-1)			
LNAV MDA	420-1	414 (500-1)	420-1½	414 (500-1½)	
CIRCLING	500-1	494 (500-1)	500-1½ 494 (500-1½)	560-2 554 (600-2)	620-2¼ 614 (700-2¼)

GALVESTON, TEXAS
Amdt 2B 30JAN20

29°16'N-94°52'W

SCHOLES INTL AT GALVESTON (GLS)
RNAV (GPS) RWY 18

SC-5, 08 OCT 2020 to 05 NOV 2020

SC-5, 08 OCT 2020 to 05 NOV 2020

KGLS
SCHOLES INTL AT GALVESTON
GALVESTON
TX
NEW CIRCLING AREA
1:100,000

