

SALINA, KANSAS

AL-362 (FAA)

19339

VORTAC SLN	APP CRS	Rwy Idg	12300
117.1	183°	TDZE	1246
Chan 118		Apt Elev	1288

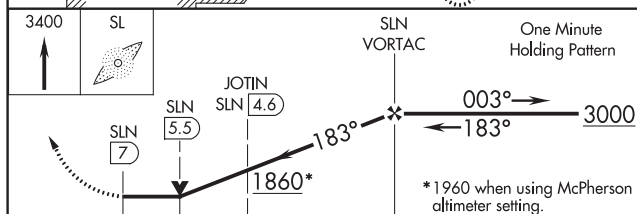
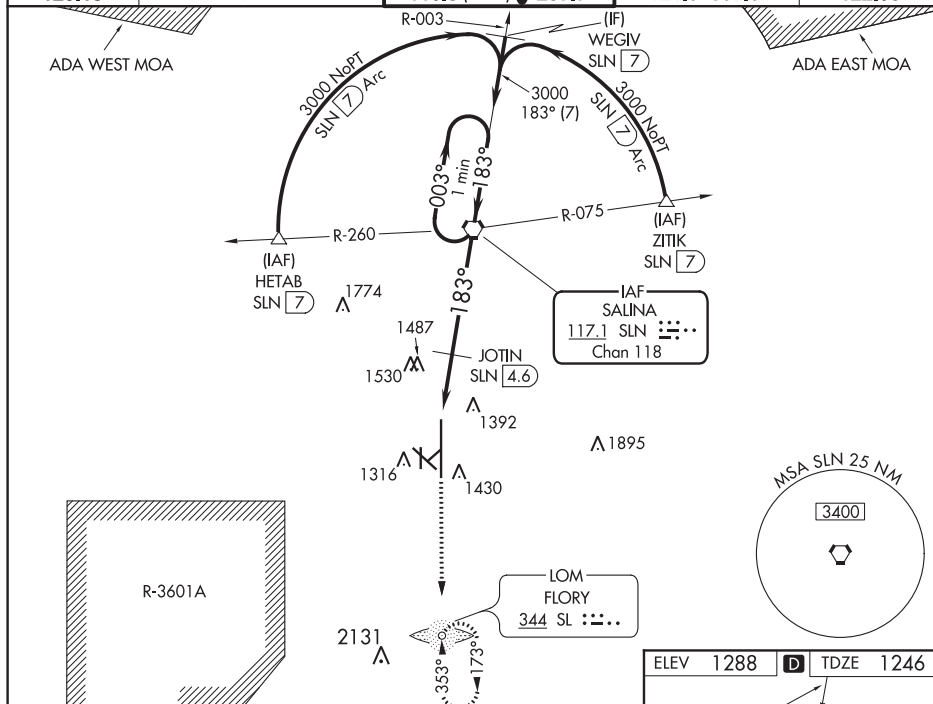
OLD
VOR RWY 17
 SALINA RGNL (SLN)

⚠ Inoperative table does not apply to Cat C/D/E. Circling NA for Cat D/E southwest of Rwy 12-30. ADF required. When local altimeter setting not received, use McPherson altimeter setting and increase all MDA 100 feet and Cat C/D/E visibility ¼ mile and increase JOTIN fix minimums S-17 Cat C/D visibility ¼ mile, Cat E visibility ½ mile, Circling Cat C/E visibility ¼ mile. VDP NA when using McPherson altimeter setting.

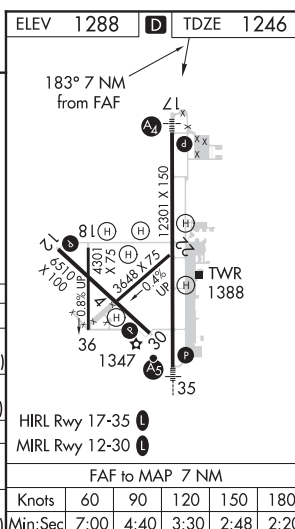


MISSED APPROACH:
Climb to 3400 direct SL LOM and hold.

ATIS	KANSAS CITY CENTER	SALINA TOWER *	GND CON	UNICOM
120.15	134.9 363.2	119.3 (CTAF) 257.7	121.9 397.9	122.95



CATEGORY	A	B	C	D	E
S-17	1860-¾ 614 (600-¾)	1860-1¾ 614 (600-1¾)	1860-2 614 (600-2)	1860-2½ 614 (600-2½)	1860-3 614 (600-3)
CIRCLING	1860-1 572 (600-1)	1860-1¾ 572 (600-1¾)	1860-2 572 (600-2)	1860-2½ 632 (700-2½)	1860-3 632 (700-3)
JOTIN FIX MINIMUMS					
S-17	1760-¾ 514 (500-¾)	1760-1½ 514 (500-1½)	1760-2 514 (500-2)	1760-2½ 514 (500-2½)	1760-3 514 (500-3)
CIRCLING	1820-1 532 (600-1)	1840-1½ 552 (600-1½)	1840-2 552 (600-2)	1920-2½ 632 (700-2½)	1920-3 632 (700-3)


 SALINA, KANSAS
 Amdt 2 20NOV08

38°47'N-97°39'W

 SALINA RGNL (SLN)
VOR RWY 17

NC-2, 08 OCT 2020 to 05 NOV 2020

NC-2, 08 OCT 2020 to 05 NOV 2020

KSLN
SALINA RGNL
SALINA
KS
NEW CIRCLING CRITERIA
1:115,000
RADII: 1.31, 1.85, 2.91, 3.81, 4.76

