

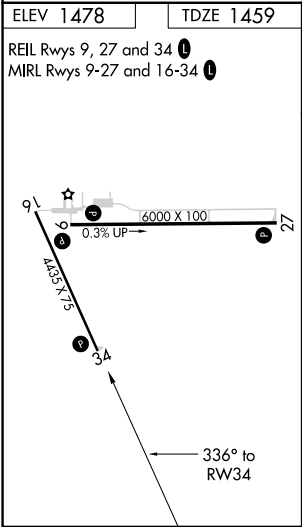
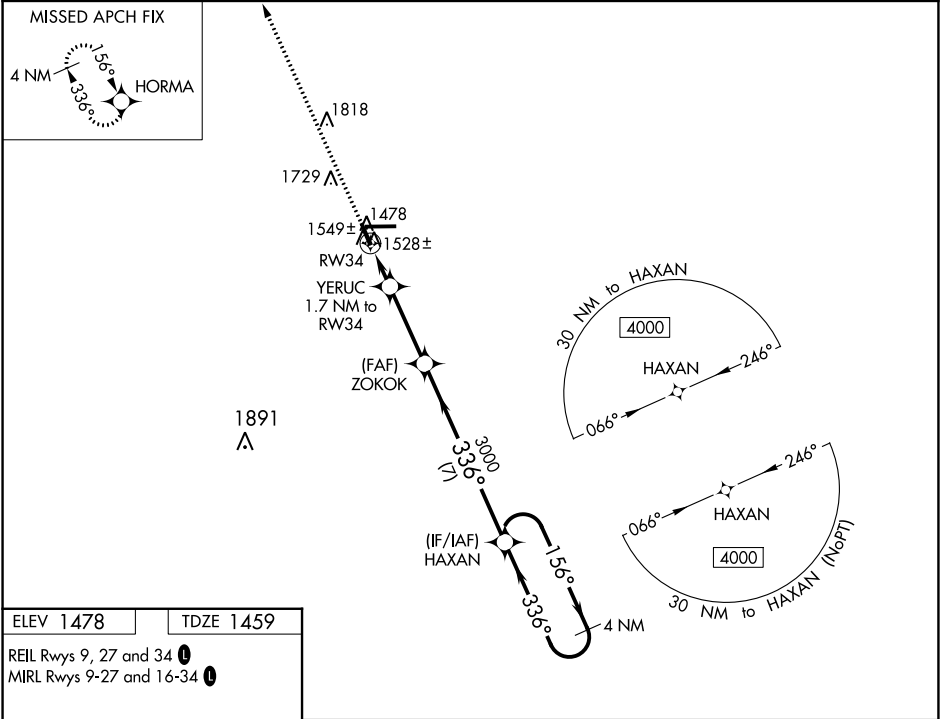
WAAS CH 73029 W34A	APP CRS 336°	Rwy Idg TDZE 1459 Apt Elev 1478
--	------------------------	---

OLD

RNAV (GPS) RWY 34
TAYLOR COUNTY (MDZ)

RNP APCH. <div><div>▼</div><div>▲</div></div> When local altimeter setting not received, use Merrill altimeter setting and increase all MDA 100 feet. Increase LP Cat C/D visibility ¼ mile, LNAV Cat C/D visibility ¼ mile, and Circling Cat D visibility ¾ mile. VDP NA when using Merrill altimeter setting.	MISSED APPROACH: Climb to 4000 direct HORMA and hold.
--	---

AWOS-3 119.025	MINNEAPOLIS CENTER 124.4 317.7	UNICOM 122.8 (CTAF) 0
--------------------------	--	---------------------------------

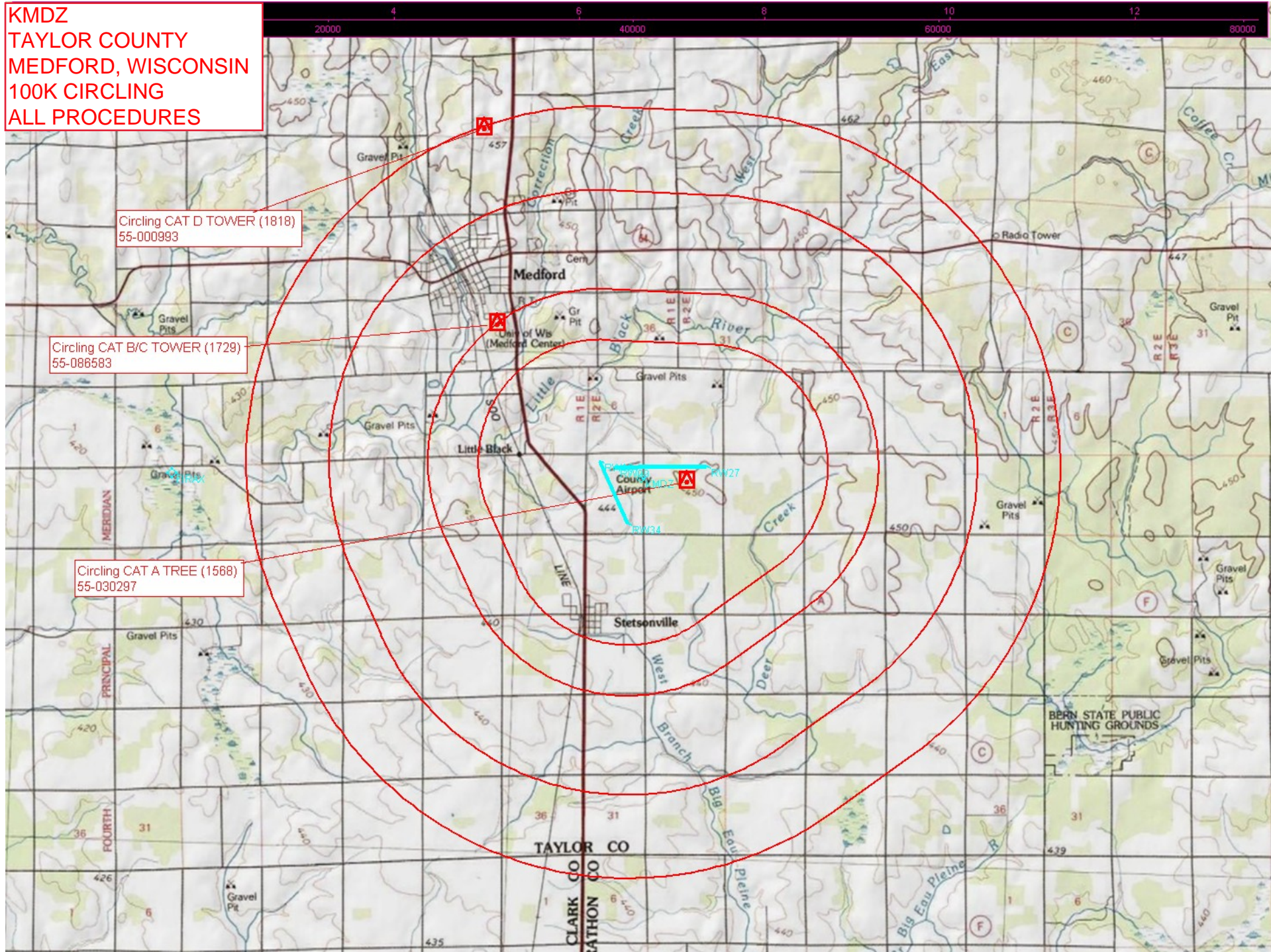


4000	HORMA	VGSI and descent angles not coincident (VGSI Angle 3.00/TCH 27).		4 NM
		HAXAN Holding Pattern		
		YERUC 1.7 NM to RW34		
		0.9 NM to RW34		
		≤ 3.00° TCH 45		
		2020		
		0.9 0.8 3 NM 7 NM		
CATEGORY	A	B	C	D
LP MDA	1780-1 321 (400-1)			
LNAV MDA	1800-1 341 (400-1)			
CIRCLING	1940-1 462 (500-1)	1940-1½ 462 (500-1½)	2080-2 602 (700-2)	

EC-3, 10 SEP 2020 to 08 OCT 2020

EC-3, 10 SEP 2020 to 08 OCT 2020

KMDZ
TAYLOR COUNTY
MEDFORD, WISCONSIN
100K CIRCLING
ALL PROCEDURES



Circling CAT D TOWER (1818)
55-000993

Circling CAT B/C TOWER (1729)
55-086583

Circling CAT A TREE (1588)
55-030297