

PETALUMA, CALIFORNIA

AL-6838 (FAA)

19115

WAAS CH <b>49124</b> <b>W29A</b>	APP CRS <b>290°</b>	Rwy Idg TDZE Apt Elev <b>3600</b> <b>86</b> <b>90</b>
--	------------------------	--

**OLD**

**RNAV (GPS) RWY 29**  
PETALUMA MUNI (O69)

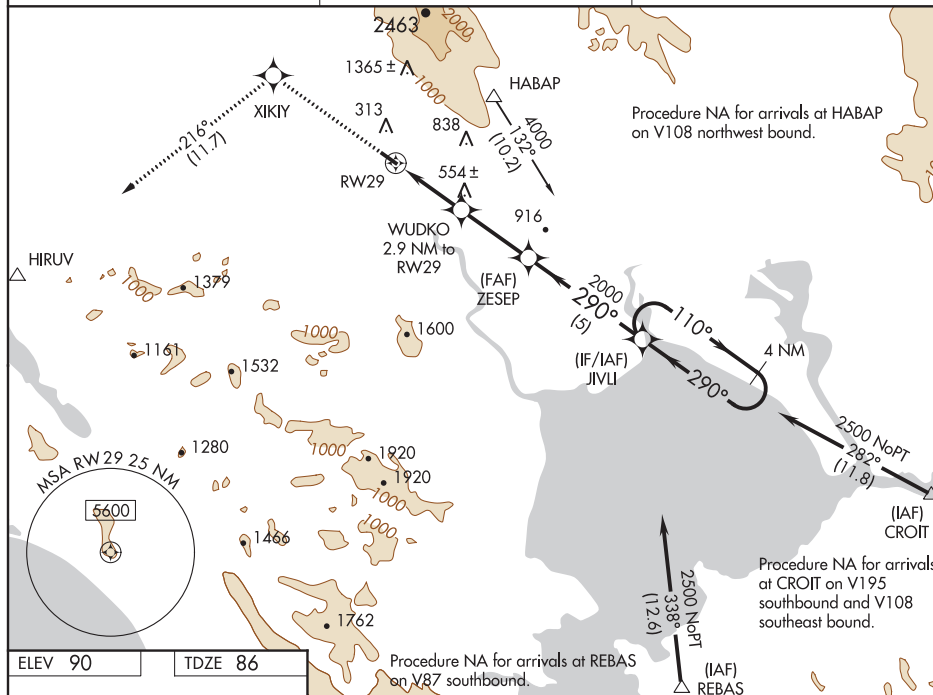
**⚠** For uncompensated Baro-VNAV systems, LNAV/VNAV NA below -1.5°C (5°F) or above 54°C (130°F). DME/DME RNP-0.3 NA.  
Night landing: Rwy 11 NA.

MISSED APPROACH: Climb to 3500 direct XIKY and on track 216° to HIRUV.

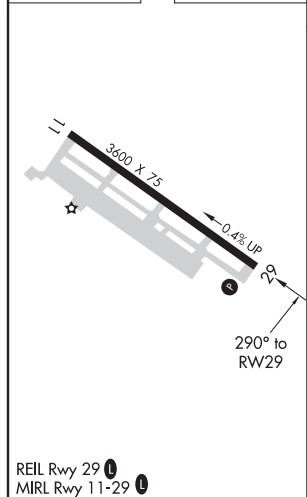
AWOS-3P <b>132.325</b>	OAKLAND CENTER <b>127.8 353.5</b>	UNICOM <b>122.7 (CTAF)</b> <b>U</b>
---------------------------	--------------------------------------	--

SW-2, 10 SEP 2020 to 08 OCT 2020

SW-2, 10 SEP 2020 to 08 OCT 2020



ELEV 90 TDZE 86



3500	XIKY	tr 216°	HIRUV	
*LNAV only				
	WUDKO 2.9 NM to RW29	ZESEP	JIVLI 4 NM Holding Pattern	
	*2.2 NM to RW29	2000	110°	2500
	2000	290°	290°	GP 3.00° TCH 55
	1040*	2000		
	2.2 NM	0.7 NM	3 NM	5 NM
CATEGORY	A	B	C	D
LPV DA	356-7/8	270 (300-7/8)		NA
LNAV/VNAV DA	707-2 1/2	621 (700-2 1/2)		NA
LNAV MDA	820-1	734 (800-1)		NA
CIRCLING	820-1	730 (800-1)		NA

PETALUMA, CALIFORNIA  
Orig-B 31MAR16

38°15'N-122°36'W

PETALUMA MUNI (O69)  
**RNAV (GPS) RWY 29**



KO69  
PETALUMA MUNI  
PETALUMA  
CA  
NEW CIRCLING AREA  
1:100,000

