

20142

WAAS CH 48831 W36A	APP CRS 359°	Rwy Idg 6001 TDZE 5 Apt Elev 6
--	------------------------	---

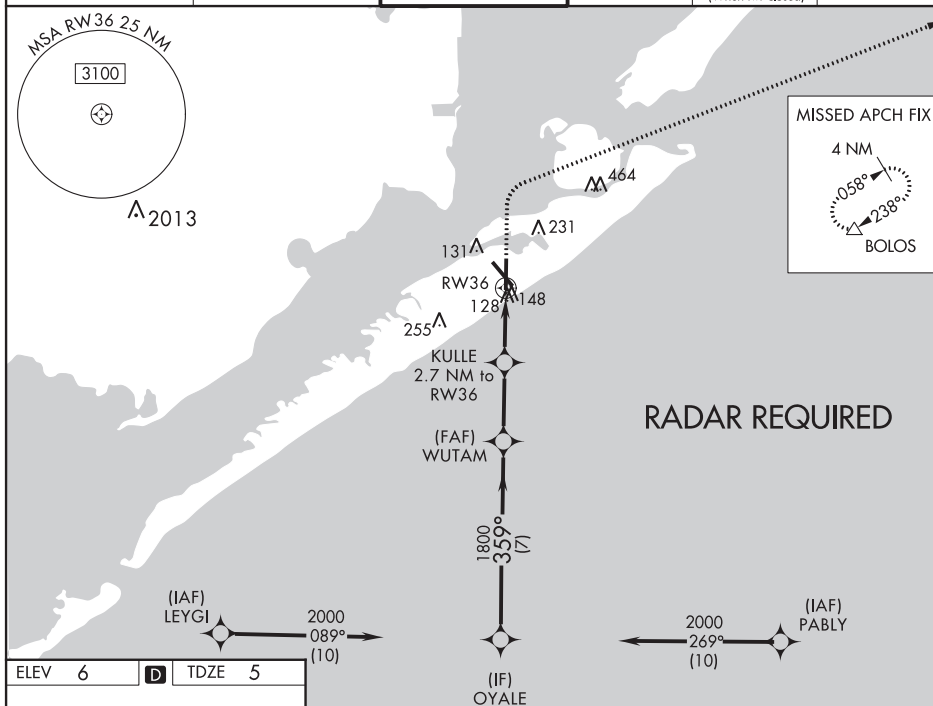
OLD

RNAV (GPS) RWY 36
SCHOLES INTL AT GALVESTON (GLS)

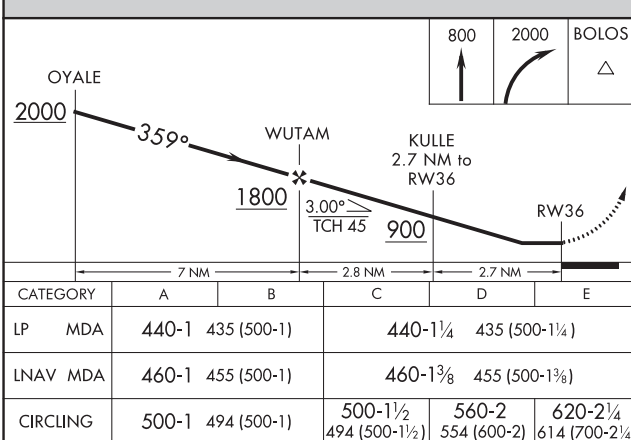
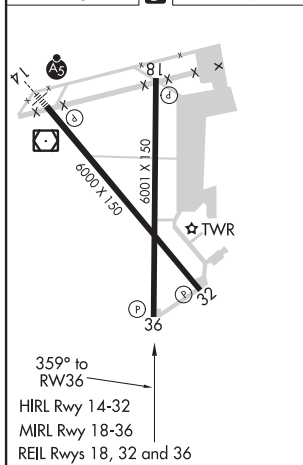
▼ When VGSI inop, Straight-in/Circling Rwy 36 procedure NA at night. Circling NA east of Rwy 18 and northeast of Rwy 32. DME/DME RNP-0.3 NA. Helicopter visibility reduction below 1 SM NA. **▲** When local altimeter setting not received, use William P Hobby altimeter setting and increase all MDA 80 feet. Increase LP Cat C/D/E visibility to 1½ mile, LNAV Cat C/D/E visibility to 1½ mile, and Circling Cat E visibility to 2½ mile.

MISSED APPROACH:
Climb to 800 then
climbing right turn to
2000 direct BOLOS
and hold.

ASOS 119,275	HOUSTON APP CON 134.45 284.0	GALVESTON TOWER ★ 120,575 (CTAF) 0	GND CON 118,625	CLNC DEL 135.35 (When twr closed)	UNICOM 123.05
------------------------	--	--	---------------------------	--	-------------------------



ELEV	6	D	TDZE	5
------	---	----------	------	---



SCHOLES INTL AT GALVESTON (GLS)
RNAV (GPS) RWY 36

KGLS
SCHOLES INTL AT GALVESTON
GALVESTON
TX
NEW CIRCLING AREA
1:100,000

