

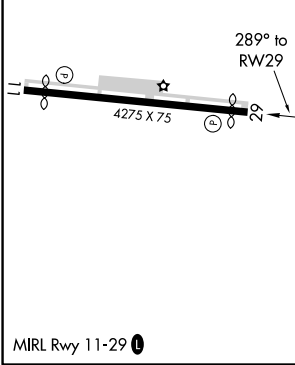
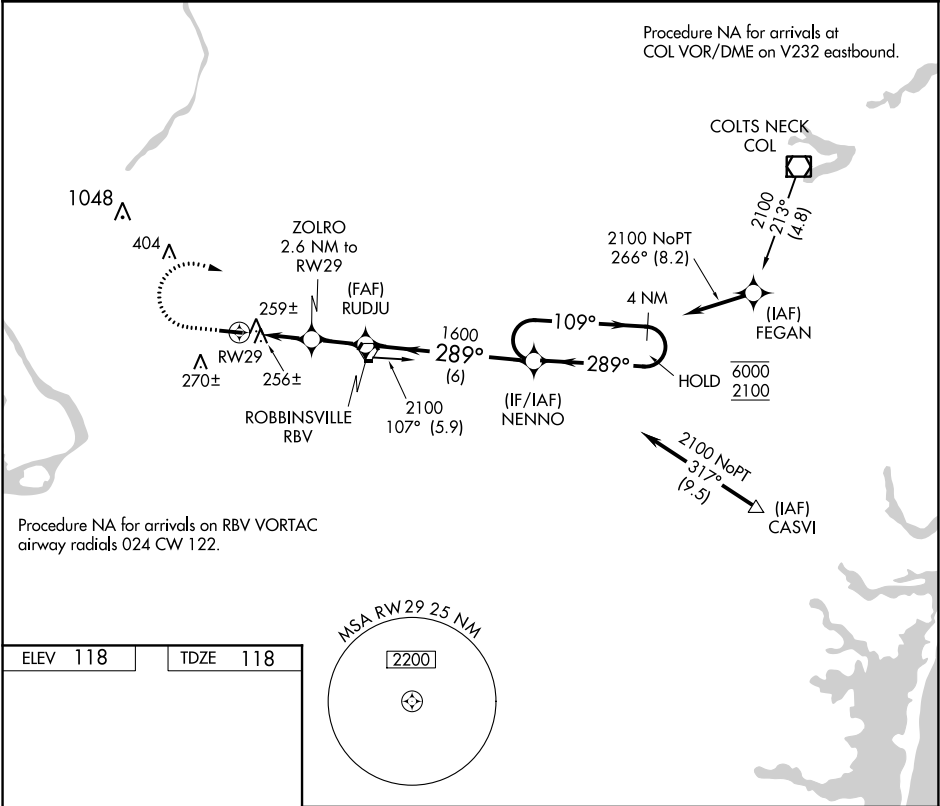
APP CRS	Rwy Idg	3975
289°	TDZE	118
	Apt Elev	118

RNAV (GPS) RWY 29

TRENTON-ROBBINSVILLE (N87)

RNP APCH.	MISSED APPROACH: Climb to 1000, then climbing right turn to 2100 direct NENNO and hold.
Procedure NA at night. Rwy 29 helicopter visibility reduction below 1 SM NA. Use Wrightstown altimeter setting.	

MC GUIRE APP CON	UNICOM	123.3 0
126.475 363.8	123.0 (CTAF)	



1000	2100	NENNO	Visual Segment - Obstacles.	
↑	↷	✧	RUDJU	NENNO
RW29		ZOLRO 2.6 NM to RW29	289°	109° → 6000
980		1600	← 289°	2100
2.6 NM		1.9 NM	6 NM	4 NM Holding Pattern
CATEGORY	A	B	C	D
LNAV MDA	540-1	422 (500-1)	540-1¼	422 (500-1¼)
CIRCLING	680-1	562 (600-1)	680-1½ 562 (600-1½)	680-2 562 (600-2)

NE-2, 10 SEP 2020 to 08 OCT 2020

NE-2, 10 SEP 2020 to 08 OCT 2020

