

FEDERAL AVIATION ADMINISTRATION
FLIGHT STANDARDS SERVICE
STANDARD TERMINAL ARRIVAL (STAR)

Bearings, headings, courses, tracks and radials are magnetic. Elevations and altitudes are in feet, MSL. Altitudes are minimum altitudes unless otherwise indicated.
Ceilings are in feet above airport elevation. Distances are in nautical miles. Visibilities are in statute miles or feet RVR unless otherwise indicated.

Arrival Name BOOVE (RNAV)	Number SIX	STAR Computer Code BOOVE.BOOVE6	Superseded Number FIVE	Dated 04/22/2021	Effective Date 23 FEB 2023				
TRANSITION ROUTES:									
Transition Name	Transition Computer Codes	From FIX/NAVAID	To FIX/NAVAID	Course	Distance	MEA	MOCA	MAA	Crossing Altitudes / Fixes
GEEKY	GEEKY.BOOVE6	GEEKY	GEEKY						
			SNGGL	082.34	46.33	10000	4000		
			NNJUH	082.78	18.96	10000	3200		
			GIBLT	082.98	14.98	10000	3200		BETWEEN FL240 AND FL300
			DARRB	083.19	20.08	10000	2800		BETWEEN FL200 AND FL230
			BOOVE	083.32	14.65	4000	2500		BETWEEN 17000 AND FL190
GUTZZ	GUTZZ.BOOVE6	GUTZZ	GUTZZ						
			EGADS	003.32	14.45	10000	2800		
			FDUBB	026.31	14.89	10000	2700		BETWEEN FL240 AND FL300
			KIILO	025.34	20.12	10000	2600		BETWEEN FL200 AND FL230
			KYSSS	025.60	04.99	10000	2500		
			BOOVE	022.61	10.11	4000	2500		BETWEEN 17000 AND FL190
KIILO	KIILO.BOOVE6	KIILO	KIILO						BETWEEN FL200 AND FL230
			KYSSS	025.60	04.99	10000	2500		
			BOOVE	022.61	10.11	4000	2500		BETWEEN 17000 AND FL190
SNGGL	SNGGL.BOOVE6	SNGGL	SNGGL						
			NNJUH	082.78	18.96	10000	3200		
			GIBLT	082.98	14.98	10000	3200		BETWEEN FL240 AND FL300
			DARRB	083.19	20.08	10000	2800		BETWEEN FL200 AND FL230
			BOOVE	083.32	14.65	4000	2500		BETWEEN 17000 AND FL190

ARRIVAL ROUTE DESCRIPTION:

FROM BOOVE ON TRACK 040.00/4.34 TO CROSS SHMPP BETWEEN 15000 AND 17000 AND AT 280 KIAS, THEN ON TRACK 040.03/11.50 TO CROSS CURLE BETWEEN 13000 AND 15000 AND AT 280 KIAS, THEN ON TRACK 040.11/8.00 TO CROSS MOWWW BETWEEN 12000 AND 13000 AND AT 260 KIAS, THEN ON TRACK 040.16/9.46 TO CROSS DELMO AT 12000 AND AT 210 KIAS, THEN ON TRACK 356.55/12.83 TO LREEE, THEN ON TRACK 356.55/12.03 TO BEONE, THEN ON TRACK 356.55. EXPECT RADAR VECTORS TO FINAL APPROACH COURSE.

PBN REQUIREMENT NOTES:

RNAV 1 - DME/DME/IRU OR GPS

EQUIPMENT REQUIREMENT NOTES:

RADAR REQUIRED

QUALITY
14
CHECKED

FEDERAL AVIATION ADMINISTRATION
FLIGHT STANDARDS SERVICE
STANDARD TERMINAL ARRIVAL (STAR)

Bearings, headings, courses, tracks and radials are magnetic. Elevations and altitudes are in feet, MSL. Altitudes are minimum altitudes unless otherwise indicated.
Ceilings are in feet above airport elevation. Distances are in nautical miles. Visibilities are in statute miles or feet RVR unless otherwise indicated.

Arrival Name	Number	STAR Computer Code	Superseded Number	Dated	Effective Date
BOOVE (RNAV)	SIX	BOOVE.BOOVE6	FIVE	04/22/2021	23 FEB 2023

PROCEDURAL DATA NOTES:

NOTE: JET AIRCRAFT ONLY

NOTE: FOR USE WHEN DFW IS OPERATING IN SOUTH FLOW. WHEN DFW IS IN NORTH FLOW, FILE AND EXPECT THE SOCKK (RNAV) STAR.

NOTE: SNGGL TRANSITION: FOR ABI TERMINAL AREA DEPARTURES ONLY.

NOTE: KIILO TRANSITION: FOR ACT AND GRK TERMINAL AREA DEPARTURES ONLY.

FIXES AND/OR HOLDING PATTERNS:

CHART HOLDING AT DARRB: HOLD W, RT, 083.01 INBOUND, 10 NM LEGS.

CHART HOLDING AT EGADS: HOLD S, LT, 003.32 INBOUND, 10 NM LEGS.

CHART HOLDING AT GUTZZ: HOLD S, LT, 003.32 INBOUND, 10 NM LEGS.

CHART HOLDING AT HOVAS: HOLD SW, RT, 060.00 INBOUND, 10 NM LEGS.

CHART HOLDING AT KIILO: HOLD SW, LT, 025.60 INBOUND, 10 NM LEGS.

CHART HOLDING AT NNJUH: HOLD W, RT, 082.78 INBOUND, 10 NM LEGS.

CHART HOLDING AT PHILS: HOLD W, RT, 080.00 INBOUND, 10 NM LEGS.

CHART HOLDING AT SNGGL: HOLD W, RT, 082.34 INBOUND, 10 NM LEGS.

CHART PHILS AS STAND ALONE WAYPOINT.

CHART HOVAS AS STAND ALONE WAYPOINT.

COMMUNICATIONS:

CHART: DALLAS REGIONAL APP CON.

AIRPORTS SERVED:

AIRPORT ID
KDFW

CITY
DALLAS-FORT WORTH

STATE
TX

LOST COMMUNICATIONS PREFERENCES:**REMARKS:****ADDITIONAL FLIGHT DATA:**

DME/DME ASSESSMENT: SAT (RNP 2.0)

MAG VAR = KDFW 04E/2015

CHART AT BEONE TERMINUS: LDG KDFW RWYS 13L/R, 17L/C/R, 18L/R

QUALITY
14
CHECKED

FEDERAL AVIATION ADMINISTRATION
FLIGHT STANDARDS SERVICE
STANDARD TERMINAL ARRIVAL (STAR)

Bearings, headings, courses, tracks and radials are magnetic. Elevations and altitudes are in feet, MSL. Altitudes are minimum altitudes unless otherwise indicated.
Ceilings are in feet above airport elevation. Distances are in nautical miles. Visibilities are in statute miles or feet RVR unless otherwise indicated.

Arrival Name	Number	STAR Computer Code	Superseded Number	Dated	Effective Date
BOOVE (RNAV)	SIX	BOOVE.BOOVE6	FIVE	04/22/2021 <i>Digitally signed by</i> ALLAN WILL Nov 21, 2022	23 FEB 2023
<u>FLIGHT INSPECTED BY:</u> GREGORY MILLS	<u>ORGANIZATION:</u> FPO	<u>DATE:</u> 11/03/2022	Flight Inspected Signature:	<i>Digitally signed by</i> WILLIAM D MELTON Aug 18, 2022 <i>Digitally signed by</i> ALLAN WILL Nov 21, 2022	
<u>DEVELOPED BY:</u> WILLIAM D. MELTON	AJV-A423	08/15/2022	Developed By Signature:		
<u>APPROVED BY:</u> MARLON ROBINSON	AJV-A420		Approved By Signature:		

CHANGES:

1. CHANGED COMMON ROUTE TRANSITION: DELMO WP ALTITUDE FROM AT 11000 AND SPEED RESTRICTION 220K TO AT 12000 AND SPEED RESTRICTION 210K.
2. CHANGED COMMON ROUTE TRANSITION: MOWWW WP ALTITUDE FROM 11000B13000 AND SPEED RESTRICTION 250K TO 12000B13000 AND SPEED RESTRICTION 260K.
3. CHANGED COMMON ROUTE TRANSITION: CURLE WP SPEED RESTRICTION FROM 270K TO 280K.
4. MEA'S REMOVED FROM COMMON ROUTE.
5. MOCA'S REVISED.
6. NOTES SECTION: CHANGED TURBOJET TO JET.
7. REMOVED RECOMMENDED NAVAID.

REASONS:

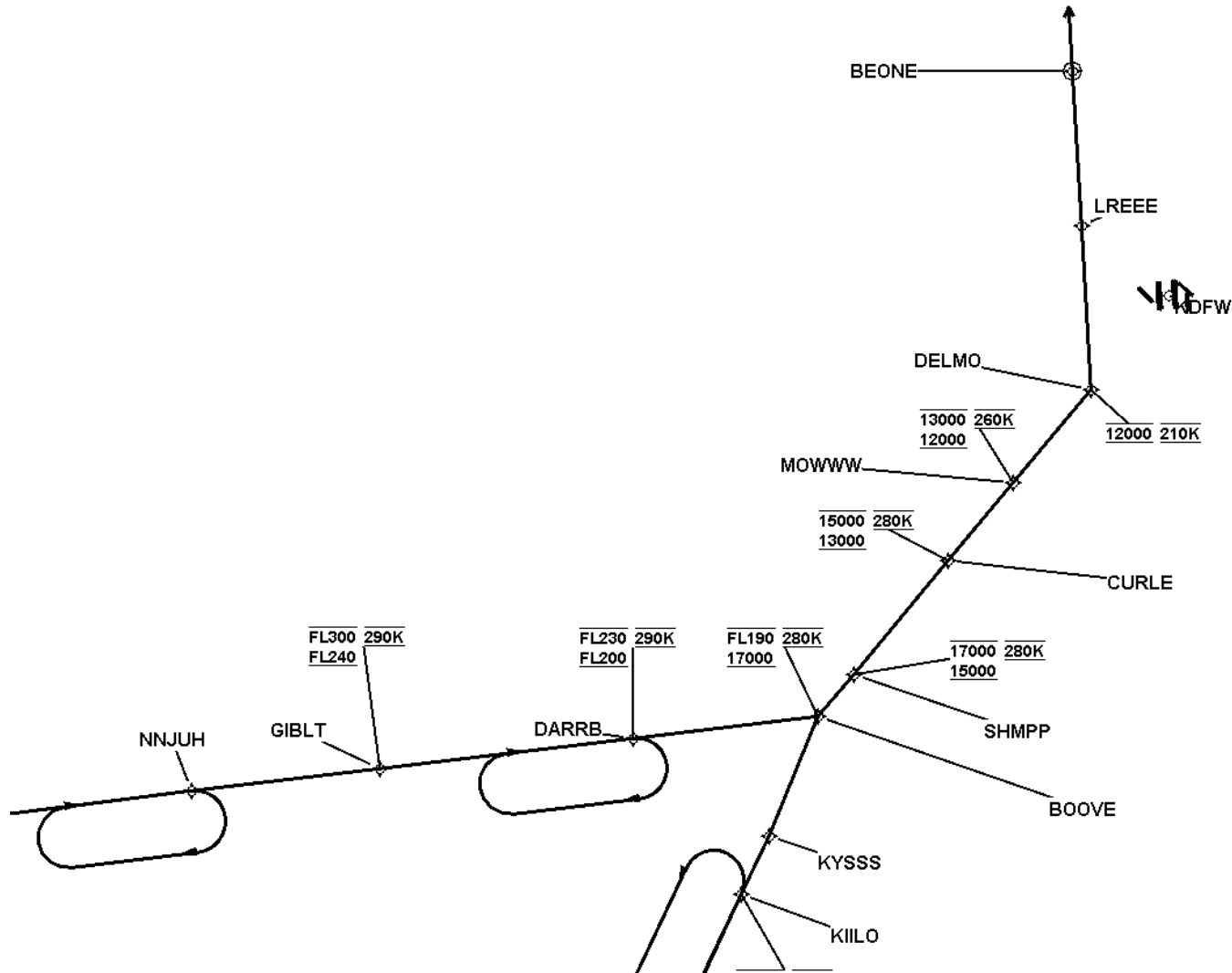
- 1, 2, 3. ATC REQUESTED.
4. NO LONGER REQUIRED IAW 8260.3E PARA 2-2-7E(3)
5. IAW 8260.3E PARA 2-2-7D(3)
6. IAW 8260.19I
7. NO LONGER REQUIRED.

QUALITY
14
CHECKED

FEDERAL AVIATION ADMINISTRATION
FLIGHT STANDARDS SERVICE
STANDARD TERMINAL ARRIVAL (STAR)

Bearings, headings, courses, tracks and radials are magnetic. Elevations and altitudes are in feet, MSL. Altitudes are minimum altitudes unless otherwise indicated.
Ceilings are in feet above airport elevation. Distances are in nautical miles. Visibilities are in statute miles or feet RVR unless otherwise indicated.

Arrival Name	Number	STAR Computer Code	Superseded Number	Dated	Effective Date
BOOVE (RNAV)	SIX	BOOVE.BOOVE6	FIVE	04/22/2021	23 FEB 2023
Graphic Depiction 1					



**FEDERAL AVIATION ADMINISTRATION
FLIGHT STANDARDS SERVICE
STAR (DATA RECORD)**

Arrival Name BOOVE (RNAV)	Number SIX	STAR Computer Code BOOVE.BOOVE6		Superseded Number FIVE		Dated 04/22/2021	Effective Date 23 FEB 2023		
<u>FIX/NAVAID</u>	<u>LAT/LONG</u>	<u>C</u>	<u>FO/FB</u>	<u>LEG TYPE</u>	<u>TC</u>	<u>DIST (NM)</u>	<u>ALTITUDE</u>	<u>SPEED</u>	<u>REMARKS</u>
En Route Transition									
GEEKY	321646.32N / 0995301.09W	Y		IF					GEEKY.BOOVE6
SNGGL	321932.27N / 0985827.46W	Y	FB	TF	086.34	46.33			
NNJUH	322034.24N / 0983606.57W	Y	FB	TF	086.78	18.96			
GIBLT	322120.45N / 0981827.19W	Y	FB	TF	086.98	14.98	FL240BFL300	AT 290K	
DARRB	322217.36N / 0975446.55W	Y	FB	TF	087.19	20.08	FL200BFL230	AT 290K	
BOOVE	322257.36N / 0973729.42W	Y	FB	TF	087.32	14.65	17000BFL190	AT 280K	
En Route Transition									
GUTZZ	312444.83N / 0980820.43W	Y		IF					GUTZZ.BOOVE6
EGADS	313906.58N / 0980610.94W	Y	FB	TF	007.32	14.45			
FDUBB	315159.46N / 0975721.36W	Y	FB	TF	030.31	14.89	FL240BFL300	AT 290K	
KIILO	320933.36N / 0974544.52W	Y	FB	TF	029.34	20.12	FL200BFL230	AT 290K	
KYSSS	321354.16N / 0974250.19W	Y	FB	TF	029.60	04.99			
BOOVE	322257.36N / 0973729.42W	Y	FB	TF	026.61	10.11	17000BFL190	AT 280K	
En Route Transition									
KIILO	320933.36N / 0974544.52W	Y		IF			FL200BFL230	AT 290K	KIILO.BOOVE6
KYSSS	321354.16N / 0974250.19W	Y	FB	TF	029.60	04.99			
BOOVE	322257.36N / 0973729.42W	Y	FB	TF	026.61	10.11	17000BFL190	AT 280K	
En Route Transition									
SNGGL	321932.27N / 0985827.46W	Y		IF					SNGGL.BOOVE6
NNJUH	322034.24N / 0983606.57W	Y	FB	TF	086.78	18.96			
GIBLT	322120.45N / 0981827.19W	Y	FB	TF	086.98	14.98	FL240BFL300	AT 290K	
DARRB	322217.36N / 0975446.55W	Y	FB	TF	087.19	20.08	FL200BFL230	AT 290K	
BOOVE	322257.36N / 0973729.42W	Y	FB	TF	087.32	14.65	17000BFL190	AT 280K	
Common Route									
BOOVE	322257.36N / 0973729.42W	Y		IF			17000BFL190	AT 280K	BOOVE.BOOVE6

FEDERAL AVIATION ADMINISTRATION
FLIGHT STANDARDS SERVICE
STAR (DATA RECORD)

Arrival Name BOOVE (RNAV)	Number SIX	STAR Computer Code BOOVE.BOOVE6		Superseded Number FIVE		Dated 04/22/2021	Effective Date 23 FEB 2023		
FIX/NAVAID	LAT/LONG	C	FO/FB	LEG TYPE	TC	DIST (NM)	ALTITUDE	SPEED	REMARKS
SHMPP	322604.88N / 0973355.87W	Y	FB	TF	044.00	04.34	15000B17000	AT 280K	
CURLE	323421.86N / 0972428.15W	Y	FB	TF	044.03	11.50	13000B15000	AT 280K	
MOWWW	324007.01N / 0971752.36W	Y	FB	TF	044.11	08.00	12000B13000	AT 260K	
DELMO	324654.94N / 0971003.08W	Y	FB	TF	044.16	09.46	AT 12000	AT 210K	
LREEE	325946.29N / 0970954.28W	Y	FB	TF	000.55	12.83			
BEONE	331149.65N / 0970946.01W	Y	FO	TF	000.55	12.03			
KDFW				FM	000.55				