

**FEDERAL AVIATION ADMINISTRATION
FLIGHT STANDARDS SERVICE
CHARTED VISUAL FLIGHT PROCEDURE (CVFP)**

Bearings, headings, courses, tracks and radials are magnetic. Elevations and altitudes are in feet, MSL. Altitudes are minimum altitudes unless otherwise indicated.
Ceilings are in feet above airport elevation. Distances are in nautical miles. Visibilities are in statute miles or feet RVR unless otherwise indicated.

<u>AIRPORT ID</u>	<u>CVFP NAME</u>	<u>ORIG/AMDT</u>	<u>CITY</u>	<u>STATE</u>	<u>SUPERSEDES</u>	<u>AMDT NO.</u>	<u>DATED</u>	<u>EFFECTIVE DATE</u>
KLGA	PARK VISUAL RWY 31	ORIG	NEW YORK	NY				22 APR 2021

VISUAL ARRIVAL ROUTE:

This is a corrected copy of the form published in NFDD 037. See page 4.

FROM (Visual Landmarks)	TO Visual Landmarks)	COURSE (if desired)	ALTITUDE (if needed) Show if for Class B
ONE MILE SOUTHEAST OF THE VERRAZANO NARROWS BRIDGE	PROSPECT PARK	044.04	3000
PROSPECT PARK	ONE HALF MILE SOUTHEAST OF THE SEVEN HIGH RISES	045.33	2500
ONE HALF MILE SOUTHEAST OF THE SEVEN HIGH RISES	ONE HALF MILE EAST OF THE FOUR TOWERS	059.12	2200
ONE HALF MILE EAST OF THE FOUR TOWERS	FLUSHING MEADOWS CORONA PARK LAKE	089.10	1100
FLUSHING MEADOWS CORONA PARK LAKE	ONE THIRD MILE SOUTHEAST OF FLUSHING MEADOWS CORONA PARK ROUND POND	044.13	700
ONE THIRD MILE SOUTHEAST OF FLUSHING MEADOWS CORONA PARK ROUND POND	ONE HALF MILE NORTHEAST OF STADIUM	359.14	400
ONE HALF MILE NORTHEAST OF STADIUM	RW31	314.15	

WEATHER MINIMA:

CEILING: 3000 VISIBILITY: 5

NOTES:

1. RADAR REQUIRED. 2. GPS REQUIRED 3. RECOMMEND ALTITUDES ARE FOR NOISE ABATEMENT.

SUPPLEMENTARY NAVAID / WAYPOINT INFORMATION AND ADDITIONAL LANDMARKS:

CHART WITH THE CORRESPONDING LAND MARKS:

VERRAZANO NARROWS BRIDGE / BENNG, PROSPECT PARK / PACHU, SEVEN HIGH RISES / GACAR, FOUR TOWERS / SHAYY, FLUSHING MEADOWS CORONA PARK LAKE / DRRYL, FLUSHING MEADOWS CORONA PARK ROUND POND / KEYTH, STADIUM / DCTRK

CHART SPEED ICON IN PLANVIEW AT GACAR: 180 KIAS; SHAYY: 165 KIAS

(LGA) LOC RWY 4, (PZV) LOC RWY 31



**FEDERAL AVIATION ADMINISTRATION
FLIGHT STANDARDS SERVICE
CHARTED VISUAL FLIGHT PROCEDURE (CVFP)**

Bearings, headings, courses, tracks and radials are magnetic. Elevations and altitudes are in feet, MSL. Altitudes are minimum altitudes unless otherwise indicated.
Ceilings are in feet above airport elevation. Distances are in nautical miles. Visibilities are in statute miles or feet RVR unless otherwise indicated.

<u>AIRPORT ID</u>	<u>CVFP NAME</u>	<u>ORIG/AMDT</u>	<u>CITY</u>	<u>STATE</u>	<u>SUPERSEDES</u>	<u>AMDT NO.</u>	<u>DATED</u>	<u>EFFECTIVE DATE</u>
KLGA	PARK VISUAL RWY 31	ORIG	NEW YORK	NY				22 APR 2021

CHART PLANVIEW NOTE: I-PZV LOC OFFSET 1.71 DEGREES.

NOTE: VDA FROM SHAYY TO RWY 31: 3.20/50

VERTICAL GUIDANCE NAVAID AND ANGLE: RWY 31 PAPI 3.00/71

DESCRIPTION OF ROUTE:

(PRINT ON CHART) WHEN CLEARED FOR THE PARK VISUAL AIRCRAFT MAY PROCEED VIA THE (SPECIAL RNAV (GPS) X RWY 31) APPROACH TO RWY 31 AND/OR CROSS GACAR AT OR BELOW 180 KTS (SEVEN TOWERS) AT 2500 OR ABOVE AND TURN RIGHT TRACKING 059° TO SHAYY AT OR BELOW 165 KTS (FOUR TOWERS) THEN RIGHT TURN TRACKING 089° TO DRRYL (FLUSHING MEADOWS PARK LAKE) THEN TURN LEFT TRACKING 044° TO KEYTH (FLUSHING MEADOWS PARK ROUND POND) THEN LEFT TURN TRACKING 359° TO DCTRK (STADIUM) THE LEFT TURN DIRECT RWY 31

NOTE: ADVISE ATC OF THE AIRPORT, FOUR TOWERS, OR PRECEEDING AIRCRAFT IN SIGHT

COMMUNICATION:

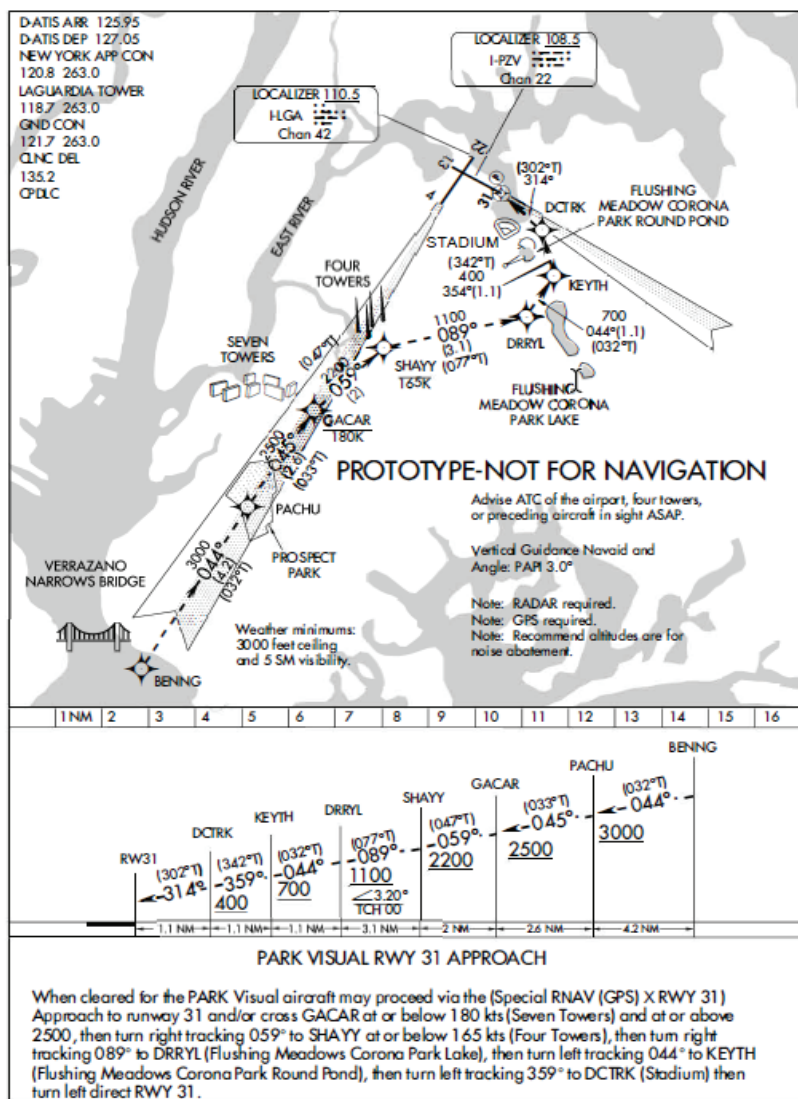
ATIS, LGA ATCT, LGA GND CON, NY APP CON, CLNC DEL, CPDLC



**FEDERAL AVIATION ADMINISTRATION
FLIGHT STANDARDS SERVICE
CHARTED VISUAL FLIGHT PROCEDURE (CVFP)**

Bearings, headings, courses, tracks and radials are magnetic. Elevations and altitudes are in feet, MSL. Altitudes are minimum altitudes unless otherwise indicated.
Ceilings are in feet above airport elevation. Distances are in nautical miles. Visibilities are in statute miles or feet RVR unless otherwise indicated.

AIRPORT ID	CVFP NAME	ORIG/AMDT	CITY	STATE	SUPERSEDES	AMDT NO.	DATED	EFFECTIVE DATE
KLGA	PARK VISUAL RWY 31	ORIG	NEW YORK	NY				22 APR 2021

GRAPHIC DEPICTION:

QUALITY
19
CHECKED

**FEDERAL AVIATION ADMINISTRATION
FLIGHT STANDARDS SERVICE
CHARTED VISUAL FLIGHT PROCEDURE (CVFP)**

Bearings, headings, courses, tracks and radials are magnetic. Elevations and altitudes are in feet, MSL. Altitudes are minimum altitudes unless otherwise indicated.
Ceilings are in feet above airport elevation. Distances are in nautical miles. Visibilities are in statute miles or feet RVR unless otherwise indicated.

<u>AIRPORT ID</u>	<u>CVFP NAME</u>	<u>ORIG/AMDT</u>	<u>CITY</u>	<u>STATE</u>	<u>SUPERSEDES</u>	<u>AMDT NO.</u>	<u>DATED</u>	<u>EFFECTIVE DATE</u>
KLGA	PARK VISUAL RWY 31	ORIG	NEW YORK	NY				22 APR 2021

FLIGHT INSPECTED BY:

JEREMY R. VIRTIS

ORGANIZATION:

FICO

DATE:

02/17/2021

FLIGHT INSPECTION
SIGNATURE:*Digitally signed by***JON DENTON**

Mar 10, 2021

DEVELOPED BY:

KELLY CARLSON

AJV-A432

11/19/2020

DEVELOPED BY
SIGNATURE:*Digitally signed by***JON DENTON**

Mar 10, 2021

APPROVED BY:

LONNIE EVERHART

AJV-A430

APPROVED BY
SIGNATURE:*Digitally signed by***JON DENTON**

Mar 10, 2021

CHANGES - REASONS:

ORIGINAL PROCEDURE

02/10/21: THIS IS AN UPDATED COPY OF THE FORM DEVELOPED ON 11/19/2020.

1. AMEND ALL MENTIONS OF "CITI FIELD" TO "STADIUM"
2. AMENDED DESCRIPTION OF ROUTE FROM "WHEN CLEARED FOR THE PARK VISUAL CROSS GACAR AT OR 180 KTS (SEVEN TOWERS) AT 2500 OR ABOVE AND TRUN RIGHT TRACKING 047° TO SHAYY AT OR BELOW 165 KTS (FOUR TOWERS) THEN RIGHT TURN TRACKING 089° TO DRRYL (FLUSHING MEADOWS PARK LAKE) THEN TRUN LEFT TRACKING 044° TO KEYTH (FLUSHING MEADOWS PARK ROUND POND) THEN LEFT TURN TRACKING 359° TO DCTRK (CITI FIELD) THE LEFT TRUN DIRECT RWY 31" TO "WHEN CLEARED FOR THE PARK VISUAL AIRCRAFT MAY PROCEED VIA THE (SPECIAL RNAV (GPS) X RWY 31) APPROACH TO RWY 31 AND/OR CROSS GACAR AT OR BELOW 180 KTS (SEVEN TOWERS) AT 2500 OR ABOVE AND TURN RIGHT TRACKING 059° TO SHAYY AT OR BELOW 165 KTS (FOUR TOWERS) THEN RIGHT TURN TRACKING 089° TO DRRYL (FLUSHING MEADOWS PARK LAKE) THEN TURN LEFT TRACKING 044° TO KEYTH (FLUSHING MEADOWS PARK ROUND POND) THEN LEFT TURN TRACKING 359° TO DCTRK (STADIUM) THE LEFT TURN DIRECT RWY 31"

02/19/21: THIS IS AN UPDATED COPY OF THE FORM DEVELOPED ON 11/19/2020.

1. ADDED "CHART PLANVIEW NOTE: FINAL APPROACH COURSE OFFSET 1.71 DEGREES" TO SUPPLEMENTARY NAVAID/WAYPOINT INFORMATION AND ADDITIONAL LANDMARKS.

3/5/21: THIS IS A CORRECTED COPY OF THE FORM APPROVED ON 02/19/2021.

1. ADDED I-PZV IDENT TO LOC OFFSET NOTE.

3/10/21: THIS IS A CORRECTED COPY OF THE FORM APPROVED ON 03/05/2021.

1. ADDED NY APP CON TO COMMUNICATIONS BLOCK.
2. CHANGED VDA NOTE FROM VDA FROM SHAYY TO RWY 31: 3.20/50 TO NOTE: VDA FROM SHAYY TO RWY 31: 3.20/50.

QUALITY
19
CHECKED