

FEDERAL AVIATION ADMINISTRATION
FLIGHT STANDARDS SERVICE
STANDARD TERMINAL ARRIVAL (STAR)

Bearings, headings, courses, tracks and radials are magnetic. Elevations and altitudes are in feet, MSL. Altitudes are minimum altitudes unless otherwise indicated.
Ceilings are in feet above airport elevation. Distances are in nautical miles. Visibilities are in statute miles or feet RVR unless otherwise indicated.

Arrival Name	Number	STAR Computer Code	Superseded Number	Dated	Effective Date
SCRLT (RNAV)	TWO	SCRLT.SCRLT2	ONE	08/12/2021	26 DEC 2024

TRANSITION ROUTES:

Transition Name	Transition Computer Codes	From FIX/NAVAID	To FIX/NAVAID	Course	Distance	MEA	MOCA	MAA	Crossing Altitudes / Fixes
HACKS	HACKS.SCRLT2	HACKS	HACKS						
			SCRLT	298.32	62.70	7000	3500		BETWEEN 10000 AND 17000
MCGNS	MCGNS.SCRLT2	MCGNS	MCGNS						
			ZEDNO	358.68	36.58	7000	3200		
			SCRLT	358.61	25.00	7000	2500		BETWEEN 10000 AND 17000

ARRIVAL ROUTE DESCRIPTION:

CMH: FROM SCRLT ON TRACK 330.87/15.73 TO BRTUS.

LANDING CMH RWY 10L/R: FROM BRTUS ON TRACK 314.78/8.43 TO CROSS OHECH AT OR BELOW 7000, THEN ON TRACK 314.91/10.16 TO RIMEE, THEN ON TRACK 281.04/3.00 TO CROSS SLATS AT 6000 AND AT 210 KIAS, THEN ON TRACK 281.04. EXPECT RADAR VECTORS TO FINAL APPROACH COURSE.

LANDING CMH RWY 28L: FROM BRTUS ON TRACK 332.90/7.11 TO EYEOH, THEN ON TRACK 002.35/5.61 TO CROSS XAVYR AT 5000 AND AT 210 KIAS, THEN ON TRACK 000.00. EXPECT RADAR VECTORS FOR ILS RWY 28L APPROACH.

LANDING CMH RWY 28R: FROM BRTUS ON TRACK 332.90/7.11 TO EYEOH, THEN ON TRACK 000.44/6.22 TO CROSS WERUP AT 5000 AND AT 210 KIAS, THEN ON TRACK 000.44. EXPECT RADAR VECTORS FOR ILS RWY 28R APPROACH.

LANDING TZR/LCK: FROM SCRLT ON TRACK 342.69/5.52 TO MLORA, THEN ON TRACK 281.31/8.97 TO CROSS JOSIK AT 9000, THEN ON TRACK 268.00. EXPECT RADAR VECTORS TO FINAL APPROACH COURSE.

LANDING OSU: FROM SCRLT ON TRACK 342.67/7.66 TO WONIK, THEN ON TRACK 322.55/6.01 TO JONPA, THEN ON TRACK 014.01/6.28 TO CROSS PAEON AT 8000, THEN ON TRACK 010.00. EXPECT RADAR VECTORS TO FINAL APPROACH COURSE.

PBN REQUIREMENT NOTES:

RNAV 1 - DME/DME/IRU OR GPS

EQUIPMENT REQUIREMENT NOTES:

RADAR REQUIRED

PROCEDURAL DATA NOTES:

NOTE: CMH AIRCRAFT LANDING EAST EXPECT RWY 10R

NOTE: CMH AIRCRAFT LANDING WEST EXPECT RWY 28L

FIXES AND/OR HOLDING PATTERNS:

CHART HOLDING AT SCRLT: HOLD S, LT, 358.65 INBOUND, 10 NM LEGS.

CHART HOLDING AT ZEDNO: HOLD S, LT, 358.65 INBOUND, 10 NM LEGS.

COMMUNICATIONS:



FEDERAL AVIATION ADMINISTRATION
FLIGHT STANDARDS SERVICE
STANDARD TERMINAL ARRIVAL (STAR)

Bearings, headings, courses, tracks and radials are magnetic. Elevations and altitudes are in feet, MSL. Altitudes are minimum altitudes unless otherwise indicated.
Ceilings are in feet above airport elevation. Distances are in nautical miles. Visibilities are in statute miles or feet RVR unless otherwise indicated.

Arrival Name	Number	STAR Computer Code	Superseded Number	Dated	Effective Date
SCRLT (RNAV)	TWO	SCRLT.SCRLT2	ONE	08/12/2021	26 DEC 2024

AIRPORTS SERVED:

<u>AIRPORT ID</u>	<u>CITY</u>	<u>STATE</u>
CMH	COLUMBUS	OH
TZR	COLUMBUS	OH
OSU	COLUMBUS	OH
LCK	COLUMBUS	OH

LOST COMMUNICATIONS PREFERENCES:REMARKS:

LDG LCK/TZR OVER-RIDE TAILWIND COMPONENT 26.28; AT FIX SCRLT IS 47.12.

ADDITIONAL FLIGHT DATA:

DME/DME ASSESSMENT: SAT (RNP 2.0)
MAG VAR: KCMH 07W/2015
CHART AT SLATS TERMINUS: CMH LDG RWY 10L/R
CHART AT XAVYR TERMINUS: CMH LDG RWY 28L
CHART AT WERUP TERMINUS: CMH LDG RWY 28R
CHART AT JOSIK TERMINUS: LDG LCK/TZR
CHART AT PAEON TERMINUS: LDG OSU

FLIGHT INSPECTED BY:ORGANIZATION: DATE:

BRIAN P CARSON

FPO

09/04/2024

Flight Inspected Signature:

Digitally signed by

JOHN BORDY

Sep 16, 2024

DEVELOPED BY:

DEVON S. KERCHER

AJV-A431

5/24/2024

Developed By Signature:

Digitally signed by

JOHN BORDY

Sep 16, 2024

APPROVED BY:

JOHN BORDY

AJV-A33

09/16/2024

Approved By Signature:

Digitally signed by

JOHN BORDY

Sep 16, 2024

CHANGES:

1. ADDED OHECH AND EYEOH TO SCRLT STAR.
2. REMOVED K IDENTS FROM 17.1 FORM.
3. REMOVED AIRPORT NAME FROM ARPTS SERVED.
4. ARRIVAL: UPDATED EXPECT APPROACH WORDING.
5. COMBINED RWY 10L/R TRANSITIONS.
6. UPDATED FM LEGS.



FEDERAL AVIATION ADMINISTRATION
FLIGHT STANDARDS SERVICE
STANDARD TERMINAL ARRIVAL (STAR)

Bearings, headings, courses, tracks and radials are magnetic. Elevations and altitudes are in feet, MSL. Altitudes are minimum altitudes unless otherwise indicated.
Ceilings are in feet above airport elevation. Distances are in nautical miles. Visibilities are in statute miles or feet RVR unless otherwise indicated.

Arrival Name	Number	STAR Computer Code	Superseded Number	Dated	Effective Date
SCRLT (RNAV)	TWO	SCRLT.SCRLT2	ONE	08/12/2021	26 DEC 2024

7. MOCA AT FIX SCRLT ON MCGNS TRANSITION CHANGED FROM 3200 TO 2500.
8. ADDED HACKS ENROUTE TRANSITION.
9. ADDED ZEDNO HOLDING PATTERN.
10. ADDED SCRLT HOLDING PATTERN.
11. DELETED MUWER, RMROD, HALUR, SINPE, GUBER FROM SCRLT STAR.
12. MOVED BRTUS WP 3.74 NM SOUTHWEST.
13. MOVED MLORA WP 4122 FT NORTHWEST.
14. CHANGED THE MEAS FROM 9000 TO 7000.

REASONS:

1. AN INCREASE IN UTILITY/ATC REQUEST.
- 2-3. IAW 8260.19.
4. REFLECT TYPE OF APPROACH TO EXPECT AS OPPOSED TO EXACT TITLE.
- 5-6. ATC REQUEST.
7. NEW CONTROLLING OBSTACLE.
- 8-13. ATC REQUEST.
14. CHANGED MEAS DUE TO DME ASSESSMENT.

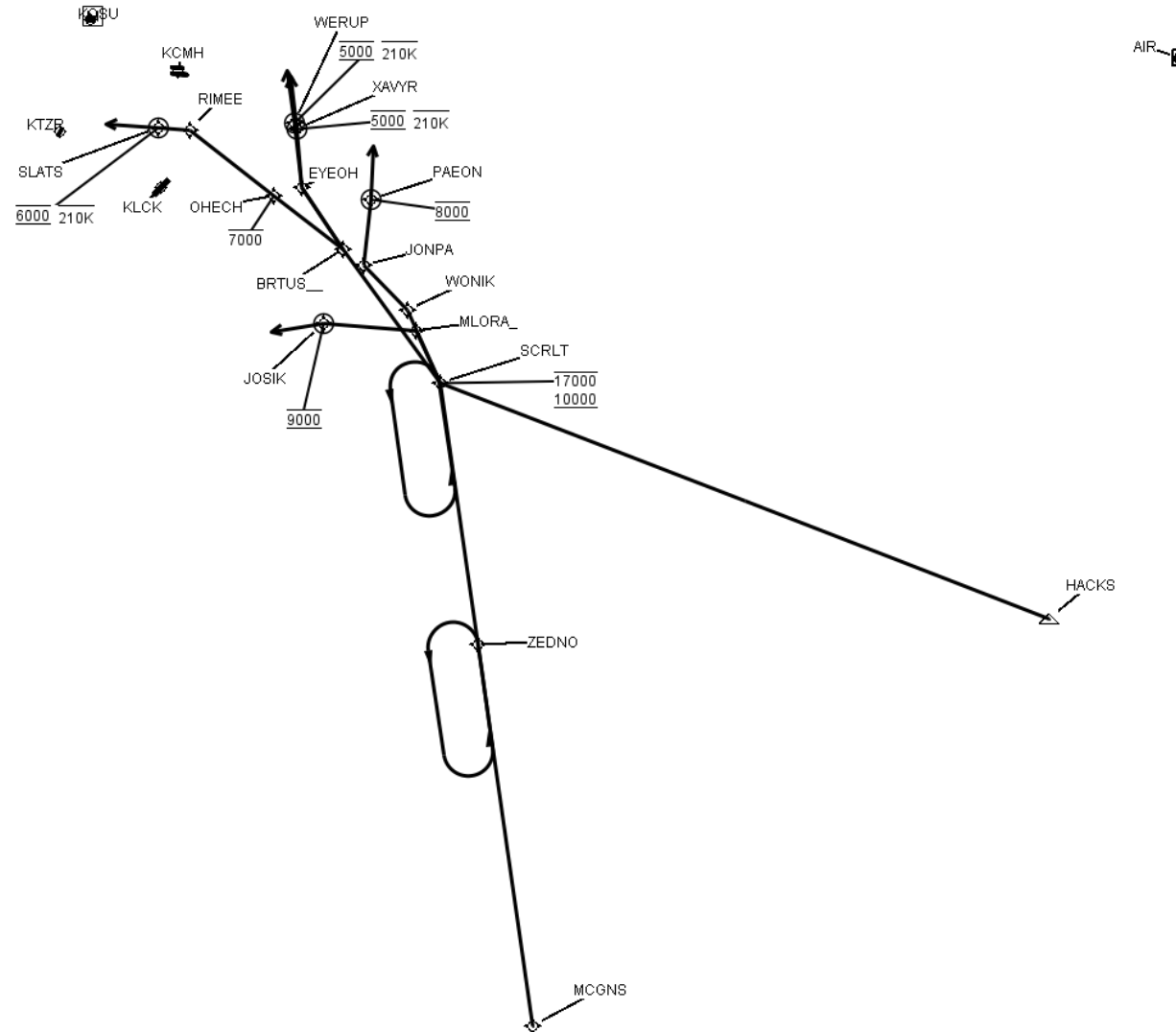


FEDERAL AVIATION ADMINISTRATION
FLIGHT STANDARDS SERVICE
STANDARD TERMINAL ARRIVAL (STAR)

Bearings, headings, courses, tracks and radials are magnetic. Elevations and altitudes are in feet, MSL. Altitudes are minimum altitudes unless otherwise indicated.
Ceilings are in feet above airport elevation. Distances are in nautical miles. Visibilities are in statute miles or feet RVR unless otherwise indicated.

Arrival Name	Number	STAR Computer Code	Superseded Number	Dated	Effective Date
SCRLT (RNAV)	TWO	SCRLT.SCRLT2	ONE	08/12/2021	26 DEC 2024

Graphic Depiction 1



FEDERAL AVIATION ADMINISTRATION
FLIGHT STANDARDS SERVICE
STAR (DATA RECORD)

Arrival Name SCRLT (RNAV)	Number TWO		STAR Computer Code SCRLT.SCRLT2		Superseded Number ONE		Dated 08/12/2021	Effective Date 26 DEC 2024	
<u>FIX/NAVAID</u>	<u>LAT/LONG</u>	<u>C</u>	<u>FO/FB</u>	<u>LEG TYPE</u>	<u>TC</u>	<u>DIST (NM)</u>	<u>ALTITUDE</u>	<u>SPEED</u>	<u>REMARKS</u>
En Route Transition									
HACKS	390745.89N / 0810534.90W	Y		IF					HACKS.SCRLT2
SCRLT	393010.49N / 0822103.02W	Y	FB	TF	291.32	62.70	10000B17000		
En Route Transition									
MCGNS	382911.54N / 0820932.63W	Y		IF					MCGNS.SCRLT2
ZEDNO	390525.31N / 0821620.36W	Y	FB	TF	351.68	36.58			
SCRLT	393010.49N / 0822103.02W	Y	FB	TF	351.61	25.00	10000B17000		
Common Route									
SCRLT	393010.49N / 0822103.02W	Y		IF			10000B17000		SCRLT.SCRLT2
BRTUS	394252.97N / 0823304.44W	Y	FB	TF	323.87	15.73			
Common Route									
SCRLT	393010.49N / 0822103.02W	Y		IF			10000B17000		SCRLT.SCRLT2
MLORA	393512.53N / 0822359.41W	Y	FB	TF	335.69	05.52			
JOSIK	393552.45N / 0823533.48W	Y	FO	TF	274.31	08.97	AT 9000		
KLCK,KTZR				FM	261.00				
Common Route									
SCRLT	393010.49N / 0822103.02W	Y		IF			10000B17000		SCRLT.SCRLT2
WONIK	393709.63N / 0822508.09W	Y	FB	TF	335.67	07.66			
JONPA	394127.26N / 0823035.35W	Y	FB	TF	315.55	06.01			
PAEON	394741.84N / 0822935.66W	Y	FO	TF	007.01	06.28	AT 8000		
KOSU				FM	003.00				
Runway Transition									
BRTUS	394252.97N / 0823304.44W	Y		IF					
OHECH	394802.59N / 0824142.82W	Y	FB	TF	307.78	08.43	AT/BELOW 7000		
RIMEE	395416.92N / 0825207.66W	Y	FB	TF	307.91	10.16			

FEDERAL AVIATION ADMINISTRATION
FLIGHT STANDARDS SERVICE
STAR (DATA RECORD)

Arrival Name SCRLT (RNAV)		Number TWO		STAR Computer Code SCRLT.SCRLT2		Superseded Number ONE		Dated 08/12/2021	Effective Date 26 DEC 2024
FIX/NAVAID	LAT/LONG	C	FO/FB	LEG TYPE	TC	DIST (NM)	ALTITUDE	SPEED	REMARKS
SLATS	395429.55N / 0825600.99W	Y	FO	TF	274.04	03.00	AT 6000	AT 210K	
KCMH:RWY 10L,RWY 10R				FM	274.04				
Runway Transition									
BRTUS	394252.97N / 0823304.44W	Y		IF					
EYEOH	394846.48N / 0823814.94W	Y	FB	TF	325.90	07.11			
XAVYR	395422.19N / 0823850.37W	Y	FO	TF	355.35	05.61	AT 5000	AT 210K	
KCMH:RWY 28L				FM	353.00				
Runway Transition									
BRTUS	394252.97N / 0823304.44W	Y		IF					
EYEOH	394846.48N / 0823814.94W	Y	FB	TF	325.90	07.11			
WERUP	395457.47N / 0823910.36W	Y	FO	TF	353.44	06.22	AT 5000	AT 210K	
KCMH:RWY 28R				FM	353.44				