

FEDERAL AVIATION ADMINISTRATION  
FLIGHT STANDARDS SERVICE  
STANDARD TERMINAL ARRIVAL (STAR)

Bearings, headings, courses, tracks and radials are magnetic. Elevations and altitudes are in feet, MSL. Altitudes are minimum altitudes unless otherwise indicated.  
Ceilings are in feet above airport elevation. Distances are in nautical miles. Visibilities are in statute miles or feet RVR unless otherwise indicated.

Arrival Name	Number	STAR Computer Code	Superseded Number	Dated	Effective Date
<b>SKILS (RNAV)</b>	<b>FIVE</b>	<b>SHILO.SKILS5</b>	<b>FOUR</b>	<b>03/29/2018</b>	<b>10 AUG 2023</b>

TRANSITION ROUTES:

Transition Name	Transition Computer Codes	From FIX/NAVAID	To FIX/NAVAID	Course	Distance	MEA	MOCA	MAA	Crossing Altitudes / Fixes
LANCASTER	LRP.SKILS5	LRP VOR/DME	LRP VOR/DME						
			ROAST	224.85	11.79	9000	2600		
			VINNY	224.76	14.55	8000	2600		
			SHILO	195.04	04.28	8000	2300		
PHILIPSBURG	PSB.SKILS5	PSB VORTAC	PSB VORTAC						
			SHILO	150.00	97.28	8000	4900		

ARRIVAL ROUTE DESCRIPTION:

FROM SHILO ON TRACK 195.03/10.79 TO CROSS SKILS AT 12000, THEN ON TRACK 195.02/20.00 TO CROSS BAL VORTAC AT 10000 AND AT 250 KIAS, THEN ON TRACK 233.76/16.24 TO EYESS.

LANDING RWY 1, 4, 33: FROM EYESS ON TRACK 230.39/3.18 TO BRUNC, THEN ON TRACK 192.36/9.07 TO FELTY, THEN ON TRACK 186.64/5.46 TO HITEK, THEN ON TRACK 186.93/15.78 TO CAVDI, THEN ON HEADING 186.93 EXPECT RADAR VECTORS TO FINAL APPROACH COURSE.

LANDING RWY 15, 19, 22: FROM EYESS ON TRACK 283.55/6.11 TO EDDWD, THEN ON TRACK 327.69/4.88 TO MEGGS, THEN ON TRACK 326.88/8.20 TO NAYES, THEN ON HEADING 326.88. EXPECT RADAR VECTORS TO FINAL APPROACH COURSE.

PBN REQUIREMENT NOTES:

RNAV 1 - DME/DME/IRU OR GPS

EQUIPMENT REQUIREMENT NOTES:

RADAR REQUIRED

PROCEDURAL DATA NOTES:

NOTE: JET AIRCRAFT ONLY

NOTE: PROHIBITED AREA (P-56) 1.5 NM NORTH OF DCA-AVOID-SURFACE TO FL180.

FIXES AND/OR HOLDING PATTERNS:

CHART HOLDING AT SKILS: HOLD N, RT, 195.02 INBOUND, 4 NM LEGS, 210 KIAS.

COMMUNICATIONS:

CHART: POTOMAC APPROACH CONTROL

AIRPORTS SERVED:

AIRPORT ID  
KDCA

CITY  
WASHINGTON

STATE  
DC

LOST COMMUNICATIONS PREFERENCES:

REMARKS:

THE ENVIRONMENTAL REVIEW UNDER ORDER 1050.1 (LATEST EDITION) AND THE NOISE SCREENING HAVE BEEN ACCOMPLISHED.



FEDERAL AVIATION ADMINISTRATION  
FLIGHT STANDARDS SERVICE  
STANDARD TERMINAL ARRIVAL (STAR)

Bearings, headings, courses, tracks and radials are magnetic. Elevations and altitudes are in feet, MSL. Altitudes are minimum altitudes unless otherwise indicated.  
Ceilings are in feet above airport elevation. Distances are in nautical miles. Visibilities are in statute miles or feet RVR unless otherwise indicated.

Arrival Name	Number	STAR Computer Code	Superseded Number	Dated	Effective Date
<b>SKILS (RNAV)</b>	<b>FIVE</b>	<b>SHILO.SKILS5</b>	<b>FOUR</b>	<b>03/29/2018</b>	<b>10 AUG 2023</b>

**ADDITIONAL FLIGHT DATA:**

DME/DME ASSESSMENT: SAT (RNP 2.0)  
MAG VAR: KDCA 11W/2020  
CHART P-56A.  
CHART P-56B.  
CHART AT CAVDI TERMINUS: KDCA LDG RWY 01, 04, 33.  
CHART AT NAYES TERMINUS: KDCA LDG RWY 15, 19, 22.

**FLIGHT INSPECTED BY:**

JEREMY R VIRTIS

**ORGANIZATION:**

FPO

**DATE:**

04/18/2023

Flight Inspected Signature:

*Digitally signed by***ALLAN WILL**

Apr 19, 2023

**DEVELOPED BY:**

DAVID JOHNSON; CHRISTIAN KARNS

ESA PBN CO-  
LEADS

09/29/2022

Developed By Signature:

*Digitally signed by***ALLAN WILL**

Apr 19, 2023

**APPROVED BY:**

ALLAN WILL, MANAGER

AJV-A423

Approved By Signature:

*Digitally signed by***ALLAN WILL**

Apr 19, 2023

**CHANGES:**

1. REMOVED NOTE: EXPECT TO CROSS SKILS AT 12000.
2. REMOVED NOTE: EXPECT TO CROSS BAL AT 10000.
3. REMOVED NOTE: CROSS BAL AT 250 KIAS.
4. ADDED RWYS 4, 33 TO RWY 1 ARRIVAL DESCRIPTION.
5. ADDED RWYS 15, 22 TO RWY 19 ARRIVAL DESCRIPTION; REMOVED WORD DEPART.
6. CHANGED NOTE REFERENCE TURBOJETS TO JETS.
7. COMMON ROUTE ARRIVAL DESCRIPTION: ADDED CROSS SKILS AT 12000; CROSS BAL VORTAC AT 10000 AND AT 250 KIAS.
8. REMOVED MEA VALUES FROM ARRIVAL DESCRIPTION.
9. ADDED TERMINUS DATA.
10. REMOVED RECOMMENDED NAVAID FROM 17.2.
11. REMOVED AIRPORT NAME FROM AIRPORTS SERVED.
12. ADDED MOCA DATA.
13. STAR COMPUTER CODE CHANGED FROM SKILS.SKILS4 TO SHILO.SKILS5.

**REASONS:**

- 1-2. CHART NOTE CRITERIA DOES NOT ALLOW EXPECT NOTES.
3. IMPROVE FLOW AND EFFICIENCY INTO KDCA.
- 4-5. ATC REQUEST, IMPROVE FLOW AND EFFICIENCY INTO KDCA.
6. IAW 8260.19I DOCUMENTATION STANDARDS.

QUALITY  
14  
CHECKED

FEDERAL AVIATION ADMINISTRATION  
FLIGHT STANDARDS SERVICE  
STANDARD TERMINAL ARRIVAL (STAR)

Bearings, headings, courses, tracks and radials are magnetic. Elevations and altitudes are in feet, MSL. Altitudes are minimum altitudes unless otherwise indicated.  
Ceilings are in feet above airport elevation. Distances are in nautical miles. Visibilities are in statute miles or feet RVR unless otherwise indicated.

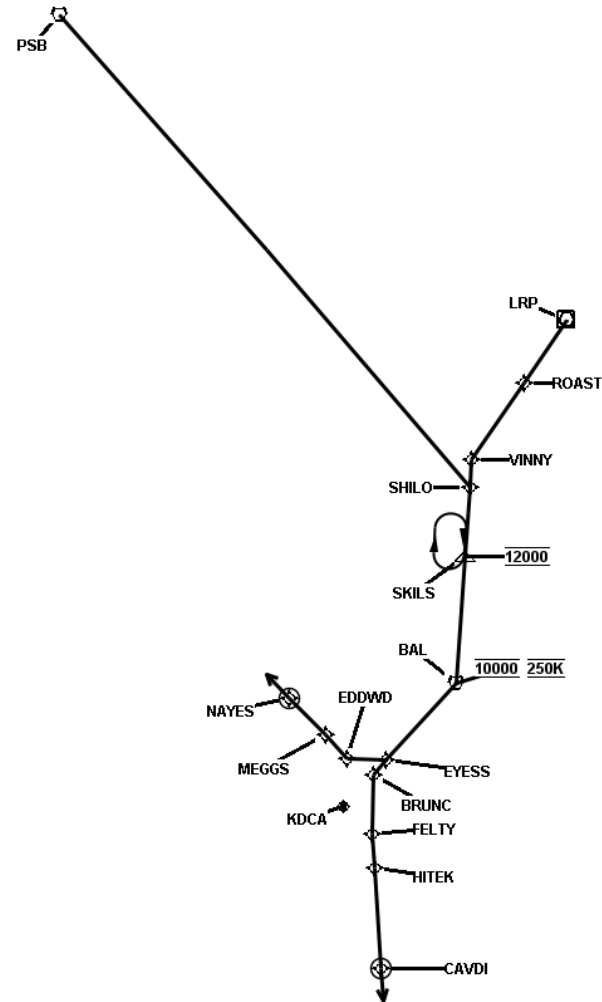
Arrival Name	Number	STAR Computer Code	Superseded Number	Dated	Effective Date
<b>SKILS (RNAV)</b>	<b>FIVE</b>	<b>SHILO.SKILS5</b>	<b>FOUR</b>	<b>03/29/2018</b>	<b>10 AUG 2023</b>
7. IMPROVE FLOW AND EFFICIENCY INTO KDCA.					
8. IAW 8260.3E, 2-2-7E(3).					
9. IAW 8260.19I, 4-5-2H(2).					
10-11. NO LONGER DOCUMENTED.					
12. IAW 8260.19I, 4-5-12B(8).					
13. IAW 8260.19I, 4-5-2R).					



FEDERAL AVIATION ADMINISTRATION  
FLIGHT STANDARDS SERVICE  
STANDARD TERMINAL ARRIVAL (STAR)

Bearings, headings, courses, tracks and radials are magnetic. Elevations and altitudes are in feet, MSL. Altitudes are minimum altitudes unless otherwise indicated.  
Ceilings are in feet above airport elevation. Distances are in nautical miles. Visibilities are in statute miles or feet RVR unless otherwise indicated.

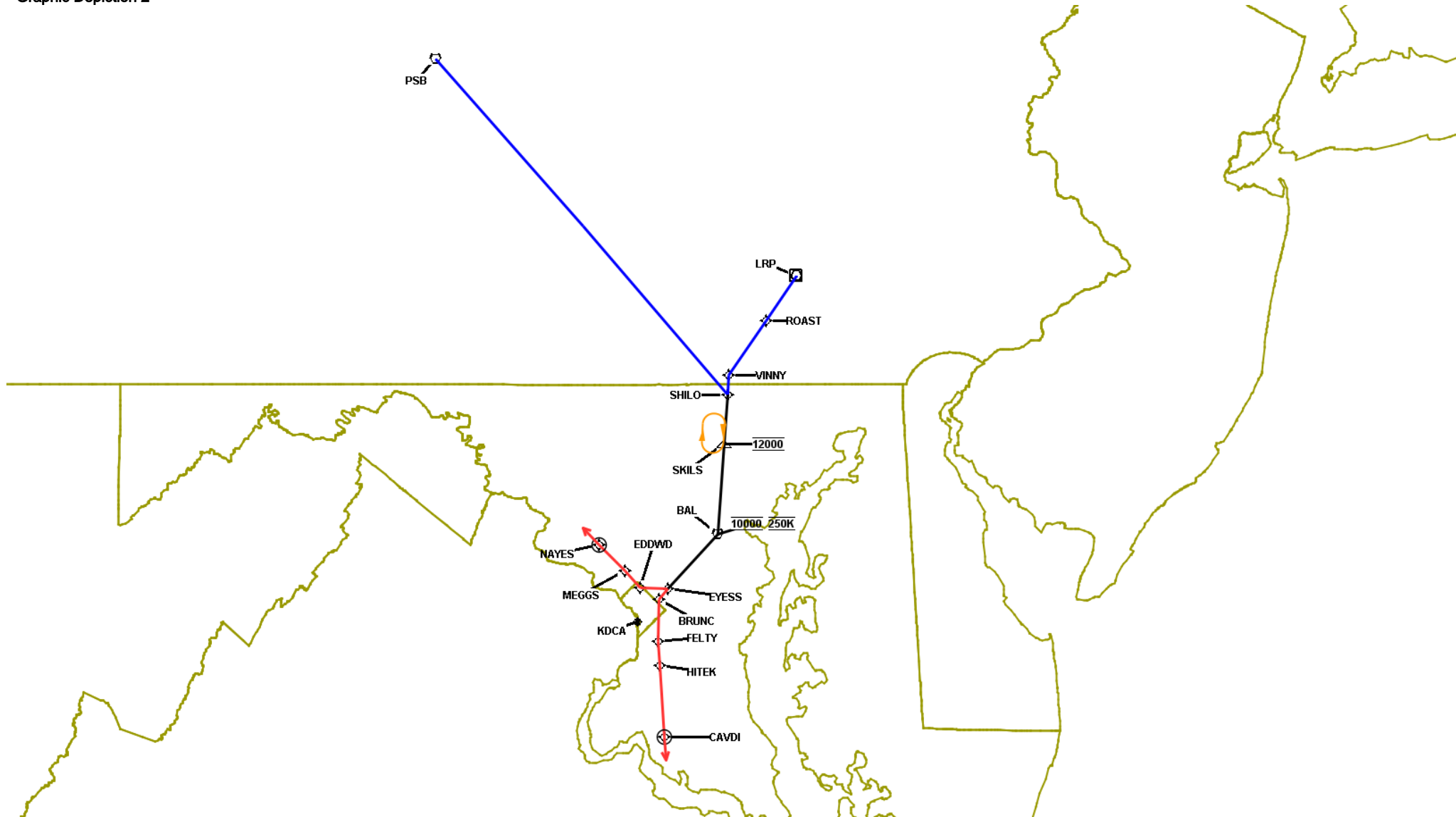
Arrival Name	Number	STAR Computer Code	Superseded Number	Dated	Effective Date
SKILS (RNAV)	FIVE	SHILO.SKILS5	FOUR	03/29/2018	10 AUG 2023
Graphic Depiction 1					



FEDERAL AVIATION ADMINISTRATION  
FLIGHT STANDARDS SERVICE  
STANDARD TERMINAL ARRIVAL (STAR)

Bearings, headings, courses, tracks and radials are magnetic. Elevations and altitudes are in feet, MSL. Altitudes are minimum altitudes unless otherwise indicated.  
Ceilings are in feet above airport elevation. Distances are in nautical miles. Visibilities are in statute miles or feet RVR unless otherwise indicated.

Arrival Name	Number	STAR Computer Code	Superseded Number	Dated	Effective Date
SKILS (RNAV)	FIVE	SHILO.SKILS5	FOUR	03/29/2018	10 AUG 2023
Graphic Depiction 2					



**FEDERAL AVIATION ADMINISTRATION  
FLIGHT STANDARDS SERVICE  
STAR (DATA RECORD)**

Arrival Name SKILS (RNAV)		Number FIVE		STAR Computer Code SHILO.SKILS5		Superseded Number FOUR		Dated 03/29/2018	Effective Date 10 AUG 2023
FIX/NAVAID	LAT/LONG	C	FO/FB	LEG TYPE	TC	DIST (NM)	ALTITUDE	SPEED	REMARKS
En Route Transition									
LRP VOR/DME	400711.91N / 0761728.66W	Y		IF					LRP.SKILS5
ROAST	395723.71N / 0762601.01W	Y	FB	TF	213.85	11.79			
VINNY	394516.64N / 0763630.16W	Y	FB	TF	213.76	14.55			
SHILO	394100.20N / 0763653.61W	Y	FB	TF	184.04	04.28			
En Route Transition									
PSB VORTAC	405458.53N / 0775933.78W	Y		IF					PSB.SKILS5
SHILO	394100.20N / 0763653.61W	Y	FB	TF	139.00	97.28			
Common Route									
SHILO	394100.20N / 0763653.61W	Y		IF					SHILO.SKILS5
SKILS	393014.00N / 0763752.32W	Y	FB	TF	184.03	10.79	AT 12000		
BAL VORTAC	391015.83N / 0763940.52W	Y	FB	TF	184.02	20.00	AT 10000	AT 250K	
EYESS	385818.75N / 0765348.84W	Y	FB	TF	222.76	16.24			
Runway Transition									
EYESS	385818.75N / 0765348.84W	Y		IF					
BRUNC	385550.89N / 0765624.24W	Y	FB	TF	219.39	03.18			
FELTY	384646.15N / 0765640.79W	Y	FB	TF	181.36	09.07			
HITEK	384119.00N / 0765609.00W	Y	FB	TF	175.64	05.46			
CAVDI	382533.43N / 0765443.49W	Y	FO	TF	175.93	15.78			
KDCA:RWY 1,RWY 4,RWY 33				VM	175.93				
Runway Transition									
EYESS	385818.75N / 0765348.84W	Y		IF					
EDDWD	385834.80N / 0770138.25W	Y	FB	TF	272.55	06.11			



FEDERAL AVIATION ADMINISTRATION  
FLIGHT STANDARDS SERVICE  
STAR (DATA RECORD)

Arrival Name		Number		STAR Computer Code		Superseded Number		Dated	Effective Date
SKILS (RNAV)		FIVE		SHILO.SKILS5		FOUR		03/29/2018	10 AUG 2023
<u>FIX/NAVAID</u>	<u>LAT/LONG</u>	<u>C</u>	<u>FO/FB</u>	<u>LEG</u> <u>TYPE</u>	<u>TC</u>	<u>DIST</u> <u>(NM)</u>	<u>ALTITUDE</u>	<u>SPEED</u>	<u>REMARKS</u>
MEGGS	390207.88N / 0770555.86W	Y	FB	TF	316.69	04.88			
NAYES	390801.02N / 0771315.81W	Y	FO	TF	315.88	08.20			
KDCA:RWY 15,RWY 19,RWY 22				VM	315.88				

