

FEDERAL AVIATION ADMINISTRATION
FLIGHT STANDARDS SERVICE
STANDARD TERMINAL ARRIVAL (STAR)

Bearings, headings, courses, tracks and radials are magnetic. Elevations and altitudes are in feet, MSL. Altitudes are minimum altitudes unless otherwise indicated.
Distances are in nautical miles (NM). Graphic depictions attached.

Arrival Name DXEEE (RNAV)	Number THREE	STAR Computer Code DXEEE.DXEEE3	Superseded Number TWO	Dated 04/22/2021	Effective Date 14 JUL 2022				
TRANSITION ROUTES:									
Transition Name	Transition Computer Codes	From FIX/NAVAID	To FIX/NAVAID	Course	Distance	MEA	MOCA	MAA	Crossing Altitudes / Fixes
DOBBY	DOBBY.DXEEE3	DOBBY	DOBBY						
			THELM	014.50	29.09	12000	2700		AT/ABOVE FL200
			VIDAA	014.69	08.12	10000	2700		
			PUDDY	017.26	14.32	10000	2700		AT/ABOVE 14000
			ORINT	005.23	08.57	10000	2700		AT/ABOVE 12000
			DXEEE	005.57	07.42	8000	2700		BETWEEN 10000 AND 14000
HFMAN	HFMAN.DXEEE3	HFMAN	HFMAN						
			GYTON	024.79	18.87	12000	2700		
			DOBBY	023.83	52.85	12000	2700		
			THELM	014.50	29.09	12000	2700		AT/ABOVE FL200
			VIDAA	014.69	08.12	10000	2700		
			PUDDY	017.26	14.32	10000	2700		AT/ABOVE 14000
			ORINT	005.23	08.57	10000	2700		AT/ABOVE 12000
			DXEEE	005.57	07.42	8000	2700		BETWEEN 10000 AND 14000
HOOLR	HOOLR.DXEEE3	HOOLR	HOOLR						
			NILEE	338.54	10.00	12000	2700		
			SKEWT	356.63	20.40	12000	2700		AT/ABOVE FL200
			VIDAA	356.63	08.53	10000	2700		
			PUDDY	017.26	14.32	10000	2700		AT/ABOVE 14000
			ORINT	005.23	08.57	10000	2700		AT/ABOVE 12000
			DXEEE	005.57	07.42	8000	2700		BETWEEN 10000 AND 14000
VIDAA	VIDAA.DXEEE3	VIDAA	VIDAA						
			PUDDY	017.26	14.32	10000	2700		AT/ABOVE 14000
			ORINT	005.23	08.57	10000	2700		AT/ABOVE 12000
			DXEEE	005.57	07.42	8000	2700		BETWEEN 10000 AND 14000

QUALITY
14
CHECKED

FEDERAL AVIATION ADMINISTRATION
FLIGHT STANDARDS SERVICE
STANDARD TERMINAL ARRIVAL (STAR)

Bearings, headings, courses, tracks and radials are magnetic. Elevations and altitudes are in feet, MSL. Altitudes are minimum altitudes unless otherwise indicated.
Distances are in nautical miles (NM). Graphic depictions attached.

Arrival Name	Number	STAR Computer Code	Superseded Number	Dated	Effective Date
DXEEE (RNAV)	THREE	DXEEE.DXEEE3	TWO	04/22/2021	14 JUL 2022

ARRIVAL ROUTE DESCRIPTION:

FROM DXEEE ON TRACK 011.12/6.13 TO BAAAB, THEN ON TRACK 057.69/5.96 TO CROSS SMILN AT OR BELOW 12000.

LANDING RWY 18L,RWY 18R: FROM SMILN ON TRACK 103.38/5.16 TO CROSS PLANX AT OR ABOVE 8000, THEN ON TRACK 103.43/6.63 TO DBORD, THEN ON TRACK 077.90/4.54 TO CROSS TRPPN AT 6000 AND AT 210 KIAS, THEN ON TRACK 354.68/4.00 TO SNOTT, THEN ON TRACK 354.68. EXPECT RADAR VECTORS TO FINAL APPROACH COURSE.

LANDING RWY 36L/R: FROM SMILN ON TRACK 093.91/6.09 TO FAACE, THEN ON TRACK 115.19/7.59 TO CROSS LIPSS AT 4000 AND AT 210 KIAS, THEN ON TRACK 115.26/3.63 TO STNSN, THEN ON TRACK 174.68/3.39 TO TATAU, THEN ON TRACK 174.68. EXPECT RADAR VECTORS TO FINAL APPROACH COURSE.

PBN REQUIREMENT NOTES

RNAV 1 - DME/DME/IRU OR GPS

EQUIPMENT REQUIREMENT NOTES

RADAR REQUIRED

PROCEDURAL DATA NOTES:

NOTE: TURBOJET AND TURBOPROP AIRCRAFT ONLY

NOTE: EXPECT RUNWAY ASSIGNMENT FROM AUSTIN TRACON UPON INITIAL CONTACT.

FIXES AND/OR HOLDING PATTERNS:

COMMUNICATIONS:

CHART: AUSTIN APP CON.

AIRPORTS SERVED:

AUSTIN-BERGSTROM INTL, AUSTIN, TX (KAUS)

LOST COMMUNICATIONS PROCEDURE:

REMARKS:

ADDITIONAL FLIGHT DATA:

DME/DME ASSESSMENT: SAT (RNP 2.0)

MAG VAR: KAUS 4E/2020

CHART AT TATAU TERMINUS: KAUS LDG RUNWAY 36L/36R.

CHART AT SNOTT TERMINUS: KAUS LDG RUNWAY 18L/18R.

QUALITY
14
CHECKED

FEDERAL AVIATION ADMINISTRATION
FLIGHT STANDARDS SERVICE
STANDARD TERMINAL ARRIVAL (STAR)

Bearings, headings, courses, tracks and radials are magnetic. Elevations and altitudes are in feet, MSL. Altitudes are minimum altitudes unless otherwise indicated.
Distances are in nautical miles (NM). Graphic depictions attached.

Arrival Name DXEEE (RNAV)	Number THREE	STAR Computer Code DXEEE.DXEEE3	Superseded Number TWO	Dated 04/22/2021	Effective Date 14 JUL 2022
<u>FLIGHT INSPECTED BY:</u>					
MICHAEL S MILLER		FPO	04/15/2022	Digitally signed by DONALD H LANIER	
Name		Organization	Date	Apr 19, 2022	Signature
<u>DEVELOPED BY:</u>					
IDALIA PULIDO, SUPPORT MANAGER, AIRSPACE AND PROCEDURES		ATO-AJT-TCHU1-I90	02/17/2022	Digitally signed by DONALD H LANIER	
Name		Organization	Date	Apr 19, 2022	Signature
<u>APPROVED BY:</u>					
LONNIE EVERHART		AJV-A430		Digitally signed by DONALD H LANIER	
Name		Organization	Date	Apr 19, 2022	Signature

CHANGES:

1. ADDED ENROUTE TRANSITION AT DOBBY.
2. ADDED ENROUTE TRANSITION AT VIDAA.
3. MOCA DATA REVISED TO REFLECT 2700.
4. UPDATED ARRIVAL ROUTE DESCRIPTION FOR RWY 18L/R: REMOVED EXPECT RNAV (RNP) APPROACH.
5. UPDATED ARRIVAL ROUTE DESCRIPTION FOR RWY 36L/R: REMOVED EXPECT RNAV (RNP) APPROACH.
6. ADDED PBN REQUIREMENT NOTE: RNAV 1-DME/DME/IRU OR GPS AND DELETED PROCEDURAL DATA NOTES: RNAV 1 AND DME/DME/IRU OR GPS REQUIRED.
7. ADDED TO ADDITIONAL FLIGHT DATA: CHART AT TATAU TERMINUS: KAUS LDG RUNWAY 36L/R AND CHART AT SNOTT TERMINUS: KAUS LDG RUNWAY 18L/18R.
8. PUBLISHED MOCA DATA.

REASONS:

1. ATC OPERATIONAL REQUEST.
2. ATC OPERATIONAL REQUEST.
3. IAW 8260.3E, 2-2-7D(3).
4. ATC REQUEST.
5. ATC REQUEST.
6. IAW 8260.19I PARA 4-5-12 D.
7. IAW 8260.19I PARA 4-5-12 J(5).
8. IAW AFS MEMO DATED 07/01/2021.

QUALITY
14
CHECKED

FEDERAL AVIATION ADMINISTRATION
FLIGHT STANDARDS SERVICE
STANDARD TERMINAL ARRIVAL (STAR)

Bearings, headings, courses, tracks and radials are magnetic. Elevations and altitudes are in feet, MSL. Altitudes are minimum altitudes unless otherwise indicated.
Distances are in nautical miles (NM). Graphic depictions attached.

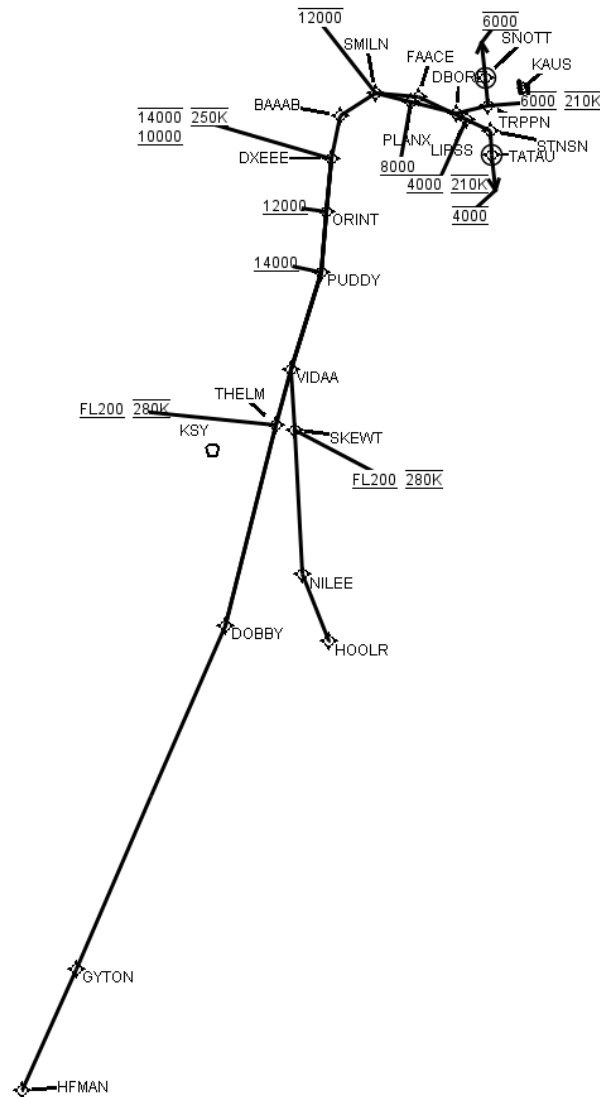
Arrival Name	Number	STAR Computer Code	Superseded Number	Dated	Effective Date
DXEEE (RNAV)	THREE	DXEEE.DXEEE3	TWO	04/22/2021	14 JUL 2022
7. IAW 8260.19 PARA 4-5-12 D.					
8. IAW 8260.19 PARA 4-5-12 F.					
9. IAW 8260.19 PARA 4-5-12 J(5).					



FEDERAL AVIATION ADMINISTRATION
FLIGHT STANDARDS SERVICE
STANDARD TERMINAL ARRIVAL (STAR)

Bearings, headings, courses, tracks and radials are magnetic. Elevations and altitudes are in feet, MSL. Altitudes are minimum altitudes unless otherwise indicated.
Distances are in nautical miles (NM). Graphic depictions attached.

Arrival Name	Number	STAR Computer Code	Superseded Number	Dated	Effective Date
DXEEE (RNAV)	THREE	DXEEE.DXEEE3	TWO	04/22/2021	14 JUL 2022
Graphic Depiction 1					



FEDERAL AVIATION ADMINISTRATION
FLIGHT STANDARDS SERVICE
STAR (DATA RECORD)

Arrival Name DXEEE (RNAV)		Number THREE		STAR Computer Code DXEEE.DXEEE3		Superseded Number TWO		Dated 04/22/2021	Effective Date 14 JUL 2022
FIX/NAVAID	LAT/LONG	C	FO/FB	LEG TYPE	TC	DIST (NM)	ALTITUDE	SPEED	REMARKS
En Route Transition									
DOBBY	285901.13N / 0983443.20W	Y		IF					DOBBY.DXEEE3
THELM	292640.38N / 0982408.78W	Y	FB	TF	018.50	29.09	AT/ABOVE FL200	AT 280K	
VIDAA	293422.87N / 0982109.78W	Y	FB	TF	018.69	08.12			
PUDDY	294745.60N / 0981511.63W	Y	FB	TF	021.26	14.32	AT/ABOVE 14000		
ORINT	295614.23N / 0981336.74W	Y	FB	TF	009.23	08.57	AT/ABOVE 12000		
DXEEE	300334.29N / 0981211.45W	Y	FB	TF	009.57	07.42	10000B14000	AT 250K	
En Route Transition									
HFMAN	275537.76N / 0991308.41W	Y		IF					HFMAN.DXEEE3
GYTON	281212.44N / 0990251.26W	Y	FB	TF	028.79	18.87			
DOBBY	285901.13N / 0983443.20W	Y	FB	TF	027.83	52.85			
THELM	292640.38N / 0982408.78W	Y	FB	TF	018.50	29.09	AT/ABOVE FL200	AT 280K	
VIDAA	293422.87N / 0982109.78W	Y	FB	TF	018.69	08.12			
PUDDY	294745.60N / 0981511.63W	Y	FB	TF	021.26	14.32	AT/ABOVE 14000		
ORINT	295614.23N / 0981336.74W	Y	FB	TF	009.23	08.57	AT/ABOVE 12000		
DXEEE	300334.29N / 0981211.45W	Y	FB	TF	009.57	07.42	10000B14000	AT 250K	
En Route Transition									
HOOLR	285549.05N / 0981806.25W	Y		IF					HOOLR.DXEEE3
NILEE	290522.82N / 0982131.76W	Y	FB	TF	342.54	10.00			
SKEWT	292549.84N / 0982116.28W	Y	FB	TF	000.63	20.40	AT/ABOVE FL200	AT 280K	
VIDAA	293422.87N / 0982109.78W	Y	FB	TF	000.63	08.53			
PUDDY	294745.60N / 0981511.63W	Y	FB	TF	021.26	14.32	AT/ABOVE 14000		
ORINT	295614.23N / 0981336.74W	Y	FB	TF	009.23	08.57	AT/ABOVE 12000		
DXEEE	300334.29N / 0981211.45W	Y	FB	TF	009.57	07.42	10000B14000	AT 250K	
En Route Transition									
VIDAA	293422.87N / 0982109.78W	Y		IF					VIDAA.DXEEE3
PUDDY	294745.60N / 0981511.63W	Y	FB	TF	021.26	14.32	AT/ABOVE 14000		