

WAAS CH <b>78016</b> <b>W33A</b>	APP CRS <b>332°</b>	Rwy Idg <b>5796</b> TDZE <b>1203</b> Apt Elev <b>1229</b>
--	------------------------	---

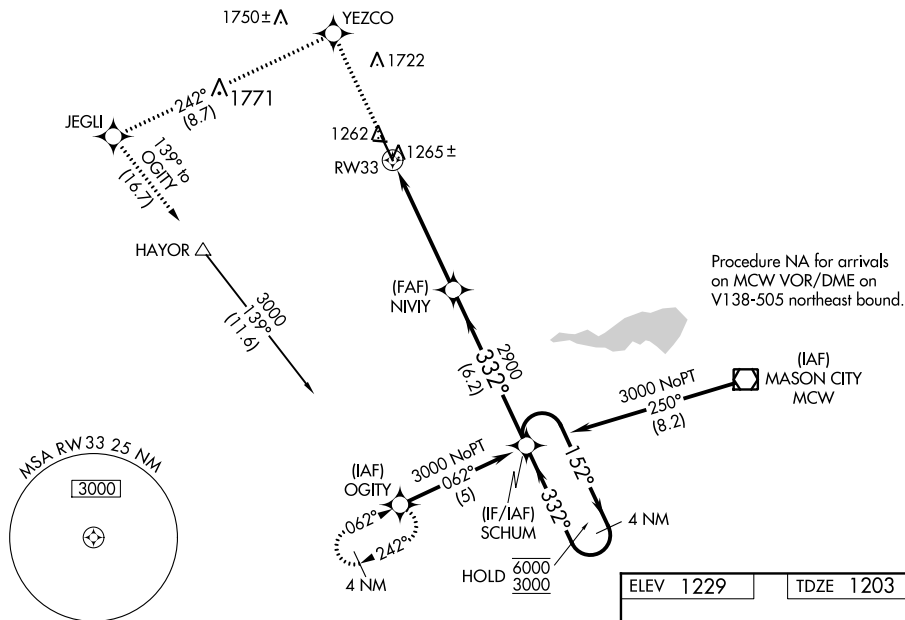
RNAV (GPS) RWY 33  
FOREST CITY MUNI (FXY)

RNP APCH.

**▼** Rwy 33 helicopter visibility reduction below 1 SM NA. Baro-VNAV NA when using  
**▲** Mason City altimeter setting. For uncompensated Baro-VNAV systems, LNAV/VNAV  
NA below -17°C or above 54°C. When local altimeter setting not received, use  
Mason City altimeter setting and increase all DA 34 feet and all MDA 40 feet.  
Straight-in Rwy 33 NA at night, Circling Rwy 9, 27 33 NA at night.

**MISSED APPROACH:** Climb to 3000  
direct YEZCO and left turn on track  
242° to JEGU and left turn on track  
139° to OGITY and hold.

AWOS-3 <b>123.925</b>	MINNEAPOLIS CENTER <b>127.3 380.2</b>	UNICOM <b>122.8 (CTAF) 0</b>
--------------------------	--	---------------------------------



3000

↑

YEZCO

✧

tr

242°

JEGLI

✧

tr

139°

OGITY

✧

SCHUM

4 NM Holding Pattern

152° →

← 332°

6000

3000

GP 3.00°

TCH 40

RW33

5.1 NM

6.2 NM

332°

2900

NIVYY

✕

CATEGORY	A	B	C	D
LPV DA	1453-1 250 (300-1)			
LNAV/VNAV DA	1535-1¼ 332 (400-1¼)			
LNAV MDA	1520-1 317 (300-1)			
CIRCLING	1680-1 451 (500-1)	1760-1 531 (600-1)	1760-1½ 531 (600-1½)	1820-2 591 (600-2)

