

FEDERAL AVIATION ADMINISTRATION
FLIGHT STANDARDS SERVICE
STANDARD TERMINAL ARRIVAL (STAR)

Bearings, headings, courses, tracks and radials are magnetic. Elevations and altitudes are in feet, MSL. Altitudes are minimum altitudes unless otherwise indicated.
Ceilings are in feet above airport elevation. Distances are in nautical miles. Visibilities are in statute miles or feet RVR unless otherwise indicated.

Arrival Name	Number	STAR Computer Code	Superseded Number	Dated	Effective Date
TRSSH (RNAV)	ONE	TRSSH.TRSSH1	NONE		10/05/2023

TRANSITION ROUTES:

Transition Name	Transition Computer Codes	From FIX/NAVAID	To FIX/NAVAID	Course	Distance	MEA	MOCA	MAA	Crossing Altitudes / Fixes
EATON	LBY.TRSSH1	LBY VORTAC	LBY VORTAC						
			TRSSH	222.95	67.21	5000	1900		AT 11000
MC COMB	MCB.TRSSH1	MCB VORTAC	MCB VORTAC						
			LGECY	177.36	24.99	5000	1900		
			MOLNR	177.39	12.00	5000	1700		
			TRSSH	177.39	06.42	5000	1500		AT 11000
MERDN	MERDN.TRSSH1	MERDN	MERDN						
			BLEUZ	220.63	55.01	5000	2700		
			LGECY	220.26	60.23	5000	2100		
			MOLNR	177.39	12.00	5000	1700		
			TRSSH	177.39	06.42	5000	1500		AT 11000
NTCHZ	NTCHZ.TRSSH1	NTCHZ	NTCHZ						
			LGECY	129.14	70.37	5000	1900		
			MOLNR	177.39	12.00	5000	1700		
			TRSSH	177.39	06.42	5000	1500		AT 11000

ARRIVAL ROUTE DESCRIPTION:

LANDING KMSY/KNBG/KNEW: FROM TRSSH ON TRACK 177.36/6.60 TO VEEEP, THEN ON TRACK 177.39/15.41 TO CROSS RAYOP AT 4000, THEN ON TRACK 177.39. EXPECT RADAR VECTORS TO FINAL APPROACH COURSE.

PBN REQUIREMENT NOTES:

RNAV 1 - DME/DME/IRU OR GPS

EQUIPMENT REQUIREMENT NOTES:

RADAR REQUIRED

PROCEDURAL DATA NOTES:

NOTE: LBY TRANSITION: FOR AIRCRAFT LANDING KNEW ONLY.

FIXES AND/OR HOLDING PATTERNS:

CHART HOLDING AT BLEUZ: HOLD NE, RT, 220.63 INBOUND, 12 NM LEGS.

CHART HOLDING AT LGECY: HOLD N, RT, 177.39 INBOUND, 10 NM LEGS.

CHART HOLDING AT MCB VORTAC: HOLD N, RT, 177.36 INBOUND, 12 NM LEGS.

COMMUNICATIONS:

CHART: NEW ORLEANS APP CON



FEDERAL AVIATION ADMINISTRATION
FLIGHT STANDARDS SERVICE
STANDARD TERMINAL ARRIVAL (STAR)

Bearings, headings, courses, tracks and radials are magnetic. Elevations and altitudes are in feet, MSL. Altitudes are minimum altitudes unless otherwise indicated.
Ceilings are in feet above airport elevation. Distances are in nautical miles. Visibilities are in statute miles or feet RVR unless otherwise indicated.

Arrival Name	Number	STAR Computer Code	Superseded Number	Dated	Effective Date
TRSSH (RNAV)	ONE	TRSSH.TRSSH1	NONE		10/05/2023

AIRPORTS SERVED:

<u>AIRPORT ID</u>	<u>CITY</u>	<u>STATE</u>
KNEW	NEW ORLEANS	LA
KMSY	NEW ORLEANS	LA
KNBG	NEW ORLEANS	LA

LOST COMMUNICATIONS PREFERENCES:REMARKS:ADDITIONAL FLIGHT DATA:

DME/DME ASSESSMENT: SAT (RNP 2.0)

MAG VAR: KMSY 01W/2020

CHART AT RAYOP TERMINUS: LDG KMSY, KNEW, KNBG

FLIGHT INSPECTED BY:ORGANIZATION: DATE:

PENDING

Flight Inspected Signature:

Digitally signed by
CASIMIR L TABAKA

Jul 31, 2023

DEVELOPED BY:

CASIMIR TABAKA (SILVIA YOUNG)

AJV-A432

4/11/2023

Developed By Signature:

Digitally signed by
CASIMIR L TABAKA

Jul 31, 2023

APPROVED BY:

CASIMIR TABAKA

AJV-A432

Approved By Signature:

Digitally signed by
CASIMIR L TABAKA

Jul 31, 2023

CHANGES:REASONS:

07/31/2023: THIS IS AN UPDATED COPY OF THE FORM DEVELOPED ON 04/11/2023

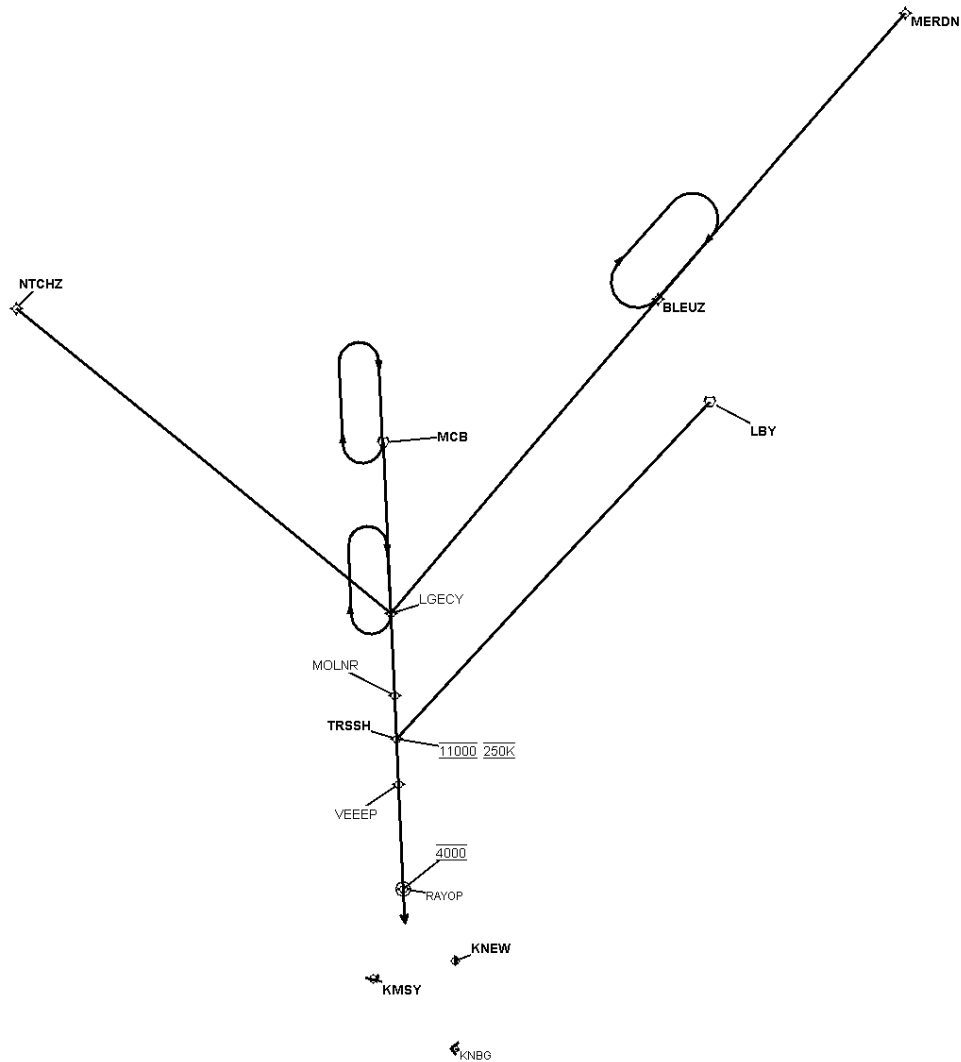
ADDED 10/05/2023 AS THE REQUIRED EFFECTIVE DATE.



FEDERAL AVIATION ADMINISTRATION
FLIGHT STANDARDS SERVICE
STANDARD TERMINAL ARRIVAL (STAR)

Bearings, headings, courses, tracks and radials are magnetic. Elevations and altitudes are in feet, MSL. Altitudes are minimum altitudes unless otherwise indicated.
Ceilings are in feet above airport elevation. Distances are in nautical miles. Visibilities are in statute miles or feet RVR unless otherwise indicated.

Arrival Name	Number	STAR Computer Code	Superseded Number	Dated	Effective Date
TRSSH (RNAV)	ONE	TRSSH.TRSSH1	NONE		10/05/2023
Graphic Depiction 1					

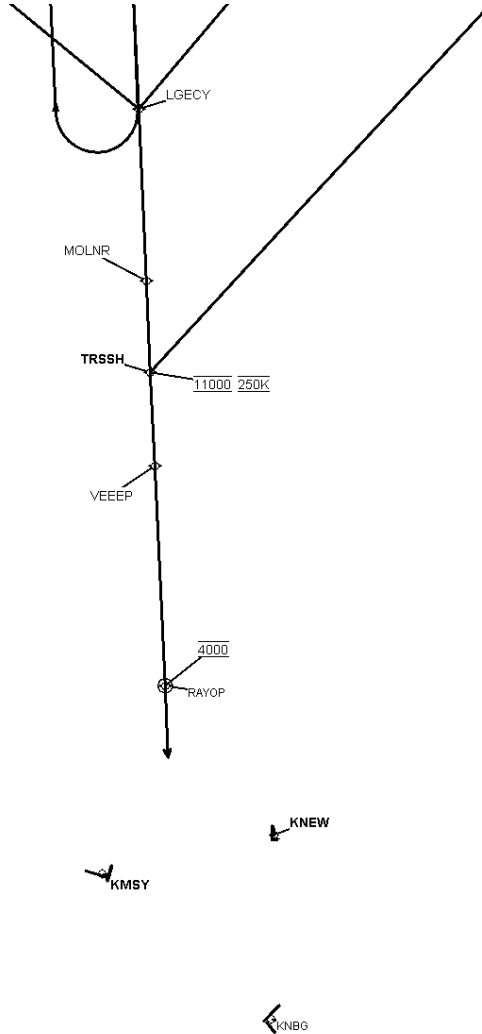


FEDERAL AVIATION ADMINISTRATION
FLIGHT STANDARDS SERVICE
STANDARD TERMINAL ARRIVAL (STAR)

Bearings, headings, courses, tracks and radials are magnetic. Elevations and altitudes are in feet, MSL. Altitudes are minimum altitudes unless otherwise indicated.
Ceilings are in feet above airport elevation. Distances are in nautical miles. Visibilities are in statute miles or feet RVR unless otherwise indicated.

Arrival Name	Number	STAR Computer Code	Superseded Number	Dated	Effective Date
TRSSH (RNAV)	ONE	TRSSH.TRSSH1	NONE		10/05/2023

Graphic Depiction 2



**FEDERAL AVIATION ADMINISTRATION
FLIGHT STANDARDS SERVICE
STAR (DATA RECORD)**

Arrival Name TRSSH (RNAV)	Number ONE		STAR Computer Code TRSSH.TRSSH1		Superseded Number NONE		Dated	Effective Date 10/05/2023	
<u>FIX/NAVAID</u>	<u>LAT/LONG</u>	<u>C</u>	<u>FO/FB</u>	<u>LEG TYPE</u>	<u>TC</u>	<u>DIST (NM)</u>	<u>ALTITUDE</u>	<u>SPEED</u>	<u>REMARKS</u>
En Route Transition									
LBV VORTAC	312507.26N / 0892015.37W	Y		IF					LBV.TRSSH1
TRSSH	303450.64N / 0901218.16W	Y	FB	TF	221.95	67.21	AT 11000	AT 250K	
En Route Transition									
MCB VORTAC	311816.03N / 0901529.53W	Y		IF					MCB.TRSSH1
LGE CY	305316.27N / 0901338.90W	Y	FB	TF	176.36	24.99			
MOLNR	304116.08N / 0901246.28W	Y	FB	TF	176.39	12.00			
TRSSH	303450.64N / 0901218.16W	Y	FB	TF	176.39	06.42	AT 11000	AT 250K	
En Route Transition									
MERDN	322242.36N / 0884814.66W	Y		IF					MERDN.TRSSH1
BLEUZ	314008.34N / 0892921.08W	Y	FB	TF	219.63	55.01			
LGE CY	305316.27N / 0901338.90W	Y	FB	TF	219.26	60.23			
MOLNR	304116.08N / 0901246.28W	Y	FB	TF	176.39	12.00			
TRSSH	303450.64N / 0901218.16W	Y	FB	TF	176.39	06.42	AT 11000	AT 250K	
En Route Transition									
NTCHZ	313705.81N / 0911758.18W	Y		IF					NTCHZ.TRSSH1
LGE CY	305316.27N / 0901338.90W	Y	FB	TF	128.14	70.37			
MOLNR	304116.08N / 0901246.28W	Y	FB	TF	176.39	12.00			
TRSSH	303450.64N / 0901218.16W	Y	FB	TF	176.39	06.42	AT 11000	AT 250K	
Common Route									
TRSSH	303450.64N / 0901218.16W	Y		IF			AT 11000	AT 250K	TRSSH.TRSSH1
VEEEP	302814.62N / 0901149.10W	Y	FB	TF	176.36	06.60			
RAYOP	301249.47N / 0901041.91W	Y	FO	TF	176.39	15.41	AT 4000		
KNBG,KNEW,KMSY				FM	176.39				

QUALITY
14
CHECKED