

FEDERAL AVIATION ADMINISTRATION
FLIGHT STANDARDS SERVICE
STANDARD TERMINAL ARRIVAL (STAR)

Bearings, headings, courses, tracks and radials are magnetic. Elevations and altitudes are in feet, MSL. Altitudes are minimum altitudes unless otherwise indicated.
Ceilings are in feet above airport elevation. Distances are in nautical miles. Visibilities are in statute miles or feet RVR unless otherwise indicated.

Arrival Name	Number	STAR Computer Code	Superseded Number	Dated	Effective Date
KLUBS (RNAV)	ONE	KLUBS.KLUBS1	NONE		25JAN2024

TRANSITION ROUTES:

Transition Name	Transition Computer Codes	From FIX/NAVAID	To FIX/NAVAID	Course	Distance	MEA	MOCA	MAA	Crossing Altitudes / Fixes
HARTT	HARTT.KLUBS1	HARTT	HARTT						
			JAGOM	153.18	25.65	10700	10700		
			KLUBS	153.26	09.99	10700	10700		

ARRIVAL ROUTE DESCRIPTION:

FROM KLUBS ON TRACK 153.30/13.28 TO CROSS EELZA AT OR ABOVE 13000 AND AT 250 KIAS, THEN ON TRACK 167.24/6.36 TO CROSS LIBGE AT 12000 AND AT 230 KIAS, THEN ON HEADING 167.24. EXPECT ASSIGNED INSTRUMENT APPROACH FOR RWY 17L/R OR RADAR VECTORS TO FINAL APPROACH COURSE.

PBN REQUIREMENT NOTES:

RNAV 1 - GPS

EQUIPMENT REQUIREMENT NOTES:

RADAR REQUIRED

PROCEDURAL DATA NOTES:

NOTE: GPS REQUIRED.

FIXES AND/OR HOLDING PATTERNS:

CHART HOLDING AT EELZA: HOLD NW, RT, 153.30 INBOUND, 10 NM LEGS.

CHART HOLDING AT FMG VORTAC: HOLD NE, LT, 221.13 INBOUND, 7 NM LEGS.

COMMUNICATIONS:

CHART: RENO TOWER.

CHART: NORCAL APP CON.

AIRPORTS SERVED:

<u>AIRPORT ID</u>	<u>CITY</u>	<u>STATE</u>
KRNO	RENO	NV

LOST COMMUNICATIONS PREFERENCES:

AT LIBGE, PROCEED INBOUND VIA RWY 17R ILS APPROACH. IF UNABLE, DIRECT FMG VORTAC AND HOLD.

REMARKS:

DO NOT CHART MOCA VALUE AT JAGOM/KLUBS.

HOLDING AT EELZA IS FOR ZOA AIRSPACE ONLY AND NOT TO BE LOWER THAN FL200.



FEDERAL AVIATION ADMINISTRATION
FLIGHT STANDARDS SERVICE
STANDARD TERMINAL ARRIVAL (STAR)

Bearings, headings, courses, tracks and radials are magnetic. Elevations and altitudes are in feet, MSL. Altitudes are minimum altitudes unless otherwise indicated.
Ceilings are in feet above airport elevation. Distances are in nautical miles. Visibilities are in statute miles or feet RVR unless otherwise indicated.

Arrival Name	Number	STAR Computer Code	Superseded Number	Dated	Effective Date
KLUBS (RNAV)	ONE	KLUBS.KLUBS1	NONE		25JAN2024

ADDITIONAL FLIGHT DATA:

DME/DME ASSESSMENT: UNSAT.
MAG VAR: KRNO 13E/2020.
CHART AT LIGBE TERMINUS: KRNO LDG RWY 17L/R.
CHART: CAUTION: INTENSE GLIDER ACTIVITY TO FL180.

FLIGHT INSPECTED BY:

THOMAS E MOLOKIE

ORGANIZATION:

FPO

DATE:

11/21/2023

Flight Inspected Signature:

*Digitally signed by***ROBERT G HAMILTON**

Nov 28, 2023

DEVELOPED BY:

Michael A Galvan

Oakland ARTCC

6/05/2023

Developed By Signature:

*Digitally signed by***ERIC N SUSKI**

Sep 15, 2023

APPROVED BY:

JOHNNIE BAKER

AJV-A430

Approved By Signature:

*Digitally signed by***ERIC N SUSKI**

Sep 15, 2023

CHANGES:

THIS IS AN UPDATED COPY OF THE FORM DEVELOPED ON 8/29/2023.

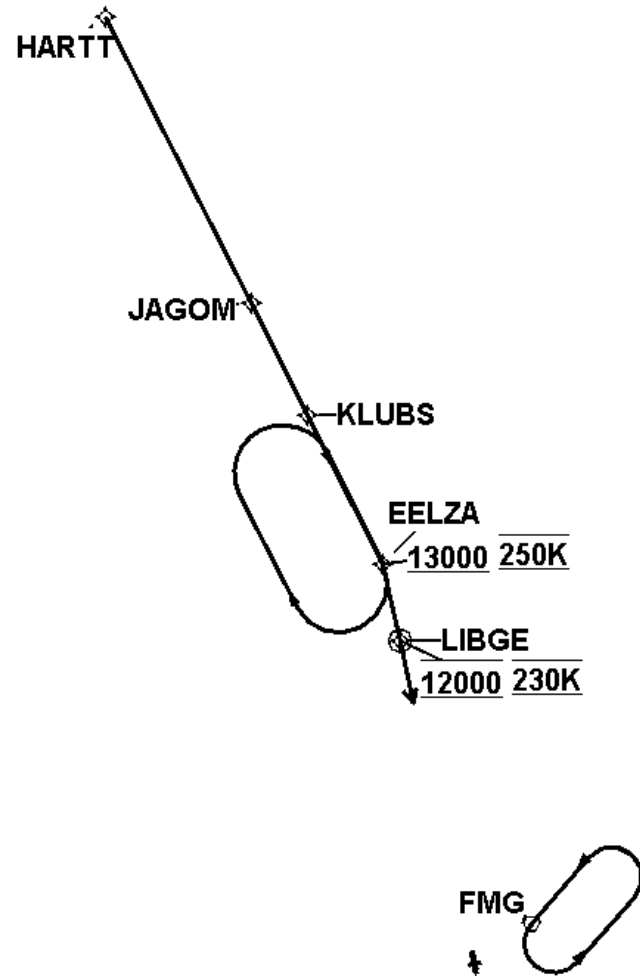
1. PER FLIGHT INSPECTION: INCREASE MOCA BETWEEN JAGOM-KLUBS FROM 8500 TO 10700.

REASONS:

FEDERAL AVIATION ADMINISTRATION
FLIGHT STANDARDS SERVICE
STANDARD TERMINAL ARRIVAL (STAR)

Bearings, headings, courses, tracks and radials are magnetic. Elevations and altitudes are in feet, MSL. Altitudes are minimum altitudes unless otherwise indicated.
Ceilings are in feet above airport elevation. Distances are in nautical miles. Visibilities are in statute miles or feet RVR unless otherwise indicated.

Arrival Name	Number	STAR Computer Code	Superseded Number	Dated	Effective Date
KLUBS (RNAV)	ONE	KLUBS.KLUBS1	NONE		25JAN2024
Graphic Depiction 1					



FEDERAL AVIATION ADMINISTRATION
FLIGHT STANDARDS SERVICE
STAR (DATA RECORD)

Arrival Name KLUBS (RNAV)	Number ONE	STAR Computer Code KLUBS.KLUBS1		Superseded Number NONE		Dated	Effective Date 25JAN2024		
<u>FIX/NAVAID</u>	<u>LAT/LONG</u>	<u>C</u>	<u>FO/FB</u>	<u>LEG TYPE</u>	<u>TC</u>	<u>DIST (NM)</u>	<u>ALTITUDE</u>	<u>SPEED</u>	<u>REMARKS</u>
En Route Transition									
HARTT	405009.12N / 1200116.49W	Y		IF					HARRT.KLUBS1
JAGOM	402513.37N / 1195315.00W	Y	FB	TF	166.18	25.65			
KLUBS	401530.44N / 1195009.01W	Y	FB	TF	166.26	09.99			
Common Route									
KLUBS	401530.44N / 1195009.01W	Y		IF					KLUBS.KLUBS1
EELZA	400235.96N / 1194603.32W	Y	FB	TF	166.30	13.28	AT/ABOVE 13000	AT 250K	
LIBGE	395614.09N / 1194605.38W	Y	FO	TF	180.24	06.36	AT 12000	AT 230K	
KRNO				VM	180.24				

QUALITY
14
CHECKED