

APP CRS
166°

Rwy Idg
TDZE
Apt Elev

2623
162
172

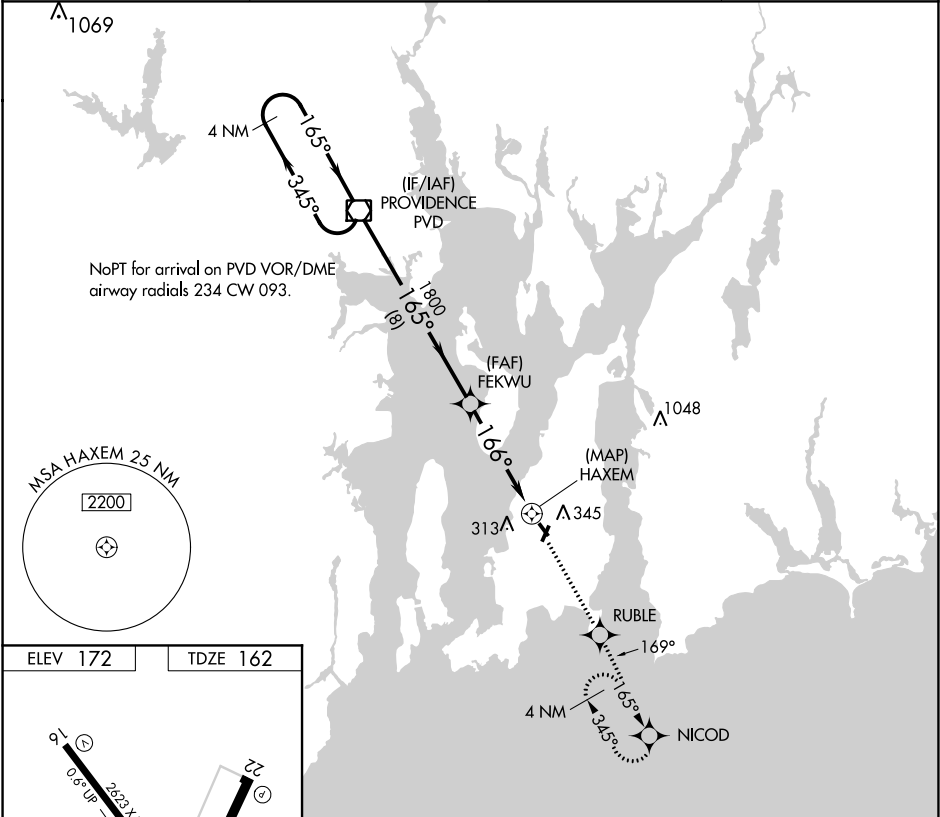
RNAV (GPS) RWY 16
NEWPORT STATE (UUU)

RNP APCH

When local altimeter setting not received, use Providence altimeter setting and increase all MDAs 60 feet. Circling Rwy 4, 22, 34 NA at night. Rwy 16 helicopter visibility reduction below 3/4 SM NA.

MISSED APPROACH: Climb to 2100 direct RUBLE and via 169° track to NICOD and hold.

ASOS 132.075	PROVIDENCE APP CON★ 128.7 269.525	CLNC DEL 127.25	UNICOM 123.05 (CTAF)
------------------------	---	---------------------------	--------------------------------



4 NM Holding Pattern

PVD VOR/DME

2100 RUBLE tr 169° NICOD

3000 ← 345° 165° → 165° FEKWU 1800 3.04° TCH 40 HAXEM

VGSI and descent angles not coincident (VGSI Angle 3.75/TCH 40).

8 NM 4.5 NM 0.5

CATEGORY	A	B	C	D
LNAV MDA	600-1 438 (500-1)	600-1 438 (500-1 1/4)	700-1 528 (600-1 1/2)	NA
CIRCLING	700-1 528 (600-1)	700-1 528 (600-1)	700-1 528 (600-1 1/2)	NA

NE-1, 08 OCT 2020 to 05 NOV 2020

NE-1, 08 OCT 2020 to 05 NOV 2020

