

GALVESTON, TEXAS

AL-164 (FAA)

20142

LOC I-GLS	APP CRS	Rwy Idg	6000
111.7	138°	TDZE	5
		Apt Elev	6

OLD

ILS or LOC RWY 14

SCHOLES INTL AT GALVESTON (GLS)

DME required.

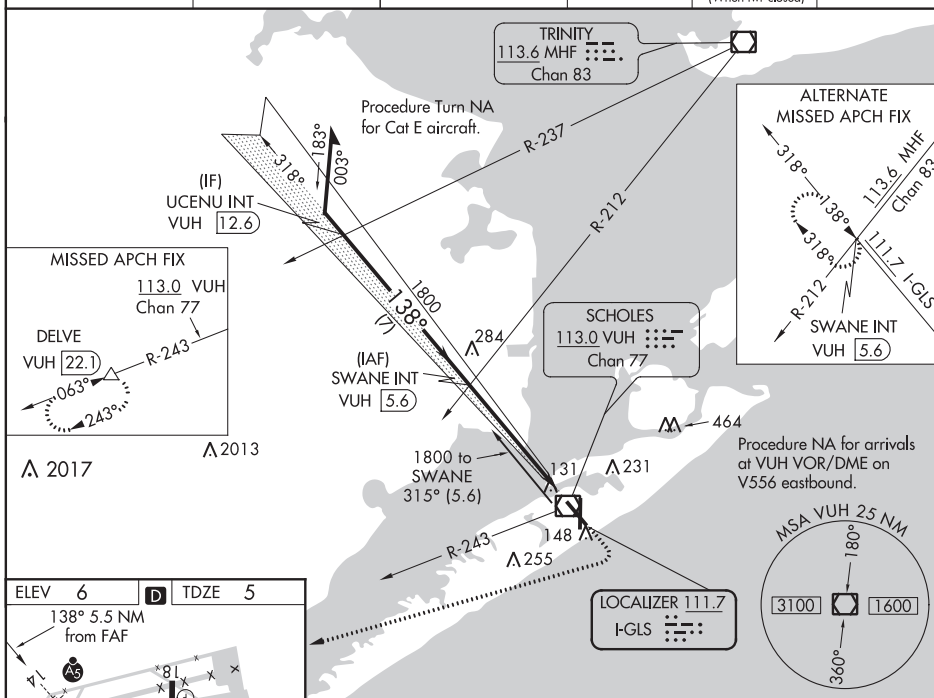
RADAR required for procedure entry at UCENU.

⚠ NA Circling NA east of Rwy 18 and northeast of Rwy 32. DME from VUH VOR/DME. Simultaneous reception of I-GLS and VUH DME required. For inop ALS, increase S-ILS 14 Cat E visibility to $\frac{3}{4}$ SM and S-LOC 14 Cat E visibility to $1\frac{1}{2}$ SM.

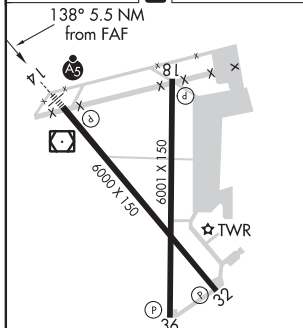


MISSED APPROACH: Climb to 1200 then climbing right turn to 3000 on heading 284° and VUH VOR/DME R-243 to DELVE/22.1 DME and hold.

ASOS 119.275	HOUSTON APP CON 134.45 284.0	GALVESTON TOWER ★ 120.575 (CTAF) 0	GND CON 118.625	CINC DEL 135.35 (When twr closed)	UNICOM 123.05
-----------------	---------------------------------	---------------------------------------	--------------------	---	------------------



ELEV 6	TDZE 5
--------	--------



REIL Rwy 18, 32, and 36
MIRL Rwy 18-36
HIRL Rwy 14-32

GALVESTON, TEXAS
Amdt 12C 25APR19

29°16'N-94°52'W

SCHOLES INTL AT GALVESTON (GLS)

ILS or LOC RWY 14

Remain within 10 NM	1800	138°	1800	318°	1800	SWANE INT VUH 5.6	1200	3000	hdg 284°	DELVE
GS 3.00° TCH 53	Procedure Turn NA for Cat E aircraft.	4.2 NM	1.3 NM	*I-GLS 1.4	*LOC only VUH 0.1					
CATEGORY	A	B	C	D	E					
S-ILS 14	205- $\frac{1}{2}$ 200 (200- $\frac{1}{2}$)									
S-LOC 14	460- $\frac{1}{2}$	455 (500- $\frac{1}{2}$)	460- $\frac{7}{8}$	455 (500- $\frac{7}{8}$)						
CIRCLING	500-1	494 (500-1)	500- $\frac{1}{2}$ 494 (500- $\frac{1}{2}$)	560-2 554 (600-2)	620- $\frac{2}{4}$ 614 (700- $\frac{2}{4}$)					

SC-5, 08 OCT 2020 to 05 NOV 2020

SC-5, 08 OCT 2020 to 05 NOV 2020

KGLS
SCHOLES INTL AT GALVESTON
GALVESTON
TX
NEW CIRCLING AREA
1:100,000

