

FEDERAL AVIATION ADMINISTRATION
FLIGHT STANDARDS SERVICE
STANDARD TERMINAL ARRIVAL (STAR)

Bearings, headings, courses, tracks and radials are magnetic. Elevations and altitudes are in feet, MSL. Altitudes are minimum altitudes unless otherwise indicated.
Ceilings are in feet above airport elevation. Distances are in nautical miles. Visibilities are in statute miles or feet RVR unless otherwise indicated.

Arrival Name	Number	STAR Computer Code	Superseded Number	Dated	Effective Date
ALEXS (RNAV)	ONE	ALEXS.ALEXS1	NONE		25 JAN 2024

TRANSITION ROUTES:

Transition Name	Transition Computer Codes	From FIX/NAVAID	To FIX/NAVAID	Course	Distance	MEA	MOCA	MAA	Crossing Altitudes / Fixes
KINZI	KINZI.ALEXS1	KINZI	KINZI						
			ALEXS	167.59	36.86	3500	2600		
MILAA	MILAA.ALEXS1	MILAA	MILAA						AT FL240
			FRRNK	097.16	39.34	6000	2600		AT 13000
			ALEXS	097.76	14.01	3500	2600		

ARRIVAL ROUTE DESCRIPTION:

FROM ALEXS ON TRACK 097.97/5.00 TO CROSS FRDEE AT 7000, THEN ON TRACK 097.97. EXPECT RADAR VECTORS TO FINAL APPROACH COURSE.

PBN REQUIREMENT NOTES:

RNAV 1 - DME/DME/IRU OR GPS

EQUIPMENT REQUIREMENT NOTES:

RADAR REQUIRED

PROCEDURAL DATA NOTES:

FIXES AND/OR HOLDING PATTERNS:

CHART HOLDING AT YOLLO: HOLD S, RT, 357.44 INBOUND, 10 NM LEGS.

CHART HOLDING AT SADIE: HOLD W, RT, 076.90 INBOUND, 10 NM LEGS.

CHART HOLDING AT FRDEE: HOLD W, LT, 097.76 INBOUND, 10 NM LEGS.

CHART YOLLO AND SADIE AS STANDALONE WAYPOINTS.

COMMUNICATIONS:

CHART: ROCKFORD APP CON

AIRPORTS SERVED:

AIRPORT ID	CITY	STATE
KRFD	CHICAGO/ROCKFORD	IL

LOST COMMUNICATIONS PREFERENCES:

REMARKS:



FEDERAL AVIATION ADMINISTRATION
FLIGHT STANDARDS SERVICE
STANDARD TERMINAL ARRIVAL (STAR)

Bearings, headings, courses, tracks and radials are magnetic. Elevations and altitudes are in feet, MSL. Altitudes are minimum altitudes unless otherwise indicated.
Ceilings are in feet above airport elevation. Distances are in nautical miles. Visibilities are in statute miles or feet RVR unless otherwise indicated.

Arrival Name	Number	STAR Computer Code	Superseded Number	Dated	Effective Date
ALEXS (RNAV)	ONE	ALEXS.ALEXS1	NONE		25 JAN 2024

ADDITIONAL FLIGHT DATA:

DME/DME ASSESSMENT: SAT (RNP 2.0)
MAG VAR: KRFD 03W/2020
CHART AT FRDEE TERMINUS: LDG KRFD

FLIGHT INSPECTED BY:

MICHAEL A GREENWOOD

ORGANIZATION:

FPO

DATE:

11/29/2023

Flight Inspected Signature:

*Digitally signed by***ROBERT G HAMILTON**

Nov 30, 2023

DEVELOPED BY:

JOSEPH BOCIK, AIRSPACE/PROCEDURES MANAGER

CHICAGO ARTCC

7/3/2023

Developed By Signature:

*Digitally signed by***CASIMIR L TABAKA**

Sep 29, 2023

*Digitally signed by***CASIMIR L TABAKA**

Sep 29, 2023

APPROVED BY:

JOHNNIE BAKER

AJV-A430

Approved By Signature:

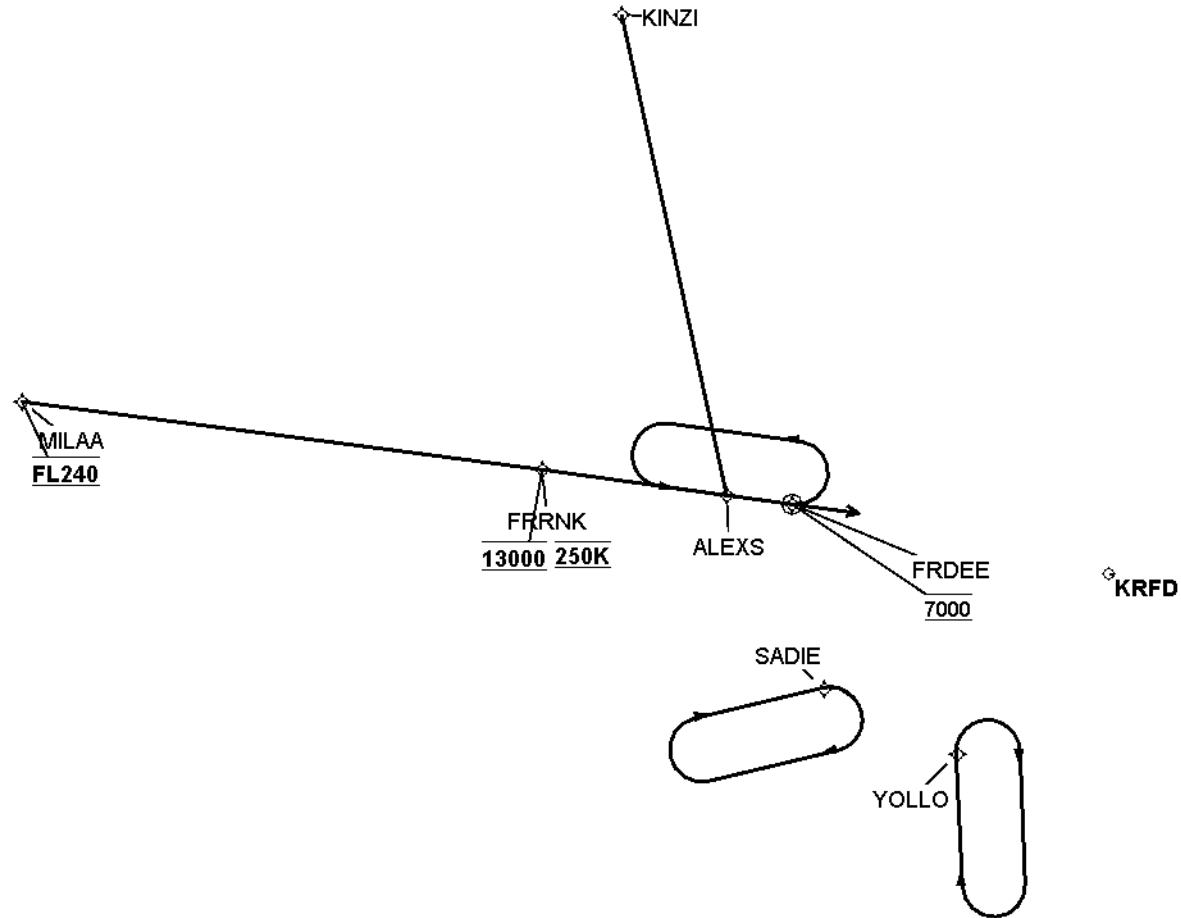
CHANGES:**REASONS:**

QUALITY
14
CHECKED

FEDERAL AVIATION ADMINISTRATION
FLIGHT STANDARDS SERVICE
STANDARD TERMINAL ARRIVAL (STAR)

Bearings, headings, courses, tracks and radials are magnetic. Elevations and altitudes are in feet, MSL. Altitudes are minimum altitudes unless otherwise indicated.
Ceilings are in feet above airport elevation. Distances are in nautical miles. Visibilities are in statute miles or feet RVR unless otherwise indicated.

Arrival Name	Number	STAR Computer Code	Superseded Number	Dated	Effective Date
ALEXS (RNAV)	ONE	ALEXS.ALEXS1	NONE		25 JAN 2024
Graphic Depiction 1					



FEDERAL AVIATION ADMINISTRATION
FLIGHT STANDARDS SERVICE
STAR (DATA RECORD)

Arrival Name		Number		STAR Computer Code		Superseded Number		Dated	Effective Date
ALEXS (RNAV)		ONE		ALEXS.ALEXS1		NONE			25 JAN 2024
<u>FIX/NAVAID</u>	<u>LAT/LONG</u>	<u>C</u>	<u>FO/FB</u>	<u>LEG</u> <u>TYPE</u>	<u>TC</u>	<u>DIST</u> <u>(NM)</u>	<u>ALTITUDE</u>	<u>SPEED</u>	<u>REMARKS</u>
En Route Transition									
KINZI	425135.96N / 0895801.74W	Y		IF					KINZI.ALEXS1
ALEXS	421602.45N / 0894450.16W	Y	FB	TF	164.59	36.86			
En Route Transition									
MILAA	422017.07N / 0905630.19W	Y		IF			AT FL240		MILAA.ALEXS1
FRRNK	421713.79N / 0900338.37W	Y	FB	TF	094.16	39.34	AT 13000	AT 250K	
ALEXS	421602.45N / 0894450.16W	Y	FB	TF	094.76	14.01			
Common Route									
ALEXS	421602.45N / 0894450.16W	Y		IF					ALEXS.ALEXS1
FRDEE	421536.24N / 0893807.67W	Y	FO	TF	094.97	05.00	AT 7000		
KRFD				FM	094.97				

