

FEDERAL AVIATION ADMINISTRATION
FLIGHT STANDARDS SERVICE
STANDARD TERMINAL ARRIVAL (STAR)

Bearings, headings, courses, tracks and radials are magnetic. Elevations and altitudes are in feet, MSL. Altitudes are minimum altitudes unless otherwise indicated.
Distances are in nautical miles (NM). Graphic depictions attached.

Arrival Name	Number	STAR Computer Code	Superseded Number	Dated	Effective Date
ADYMS (RNAV)	THREE	ADYMS.ADYMS3	TWO	10/15/2015	27 JAN 2022

TRANSITION ROUTES:

Transition Name	Transition Computer Codes	From FIX/NAVAID	To FIX/NAVAID	Course	Distance	MEA	MOCA	MAA	Crossing Altitudes / Fixes
PENDLETON	PDT.ADYMS3	PDT VORTAC	PDT VORTAC						
			ADYMS	281.01	102.53	17000	8600		AT FL240
SUNED	SUNED.ADYMS3	SUNED	SUNED						
			ADYMS	264.42	50.44	17000	8900		AT FL240

ARRIVAL ROUTE DESCRIPTION:

FROM ADYMS ON TRACK 279.64/22.07 TO CROSS WHYTE AT OR ABOVE 14000, THEN ON TRACK 279.92/22.00 TO CROSS WEBIM BETWEEN 9000 AND 11000, THEN ON TRACK 279.51/4.69 TO CROSS WRKHS AT OR ABOVE 7500.

LANDING RWY 16 : FROM WRKHS ON TRACK 279.42/3.81 TO CROSS MUIRE AT OR ABOVE 6200, THEN ON TRACK 279.59/2.21 TO ROCCI, THEN ON TRACK 279.44/2.29 TO CROSS ALDER AT OR ABOVE 5000, THEN ON TRACK 345.84/2.79 TO HUNAM, THEN ON TRACK 345.87/2.02 TO CROSS ELBBE AT 4000 AND AT 210 KIAS, THEN ON TRACK 346.00. EXPECT RADAR VECTORS TO FINAL APPROACH COURSE OR VISUAL APPROACH.

LANDING RWY 34: FROM WRKHS ON TRACK 279.42/3.81 TO CROSS MUIRE AT OR ABOVE 6200, THEN ON TRACK 279.59/2.21 TO ROCCI, THEN ON TRACK 279.44/2.29 TO CROSS ALDER AT OR ABOVE 5000, THEN ON TRACK 324.14/4.77 TO CROSS ZOTAN AT OR ABOVE 4400, THEN ON TRACK 324.11/2.27 TO CROSS RIMOE AT/ABOVE 4000. EXPECT ILS OR VISUAL APPROACH.

PBN REQUIREMENT NOTES

RNAV 1 - DME/DME/IRU OR GPS

EQUIPMENT REQUIREMENT NOTES

RADAR REQUIRED

PROCEDURAL DATA NOTES:

NOTE: TURBOJET AIRCRAFT DESCEND VIA MACH NUMBER UNTIL INTERCEPTING 280 KIAS. MAINTAIN 280 KIAS UNTIL 10000.

FIXES AND/OR HOLDING PATTERNS:

CHART HOLDING AT CUBIT: W, RT, 087.00 INBOUND, 9 NM LEGS.

CHART HOLDING AT STEIL: W, RT, 077.00 INBOUND, 9 NM LEGS.

COMMUNICATIONS:

CHART: SEA APP CON

CHART: TCM TWR

CHART: TCM GND CON

AIRPORTS SERVED:

MCCHORD FLD (JOINT BASE LEWIS-MCCHORD), TACOMA, WA (KTCM)

LOST COMMUNICATIONS PROCEDURE:

RWY 34: AT ALDER, EXECUTE APPROACH, IF UNABLE, PROCEED DIRECT CUBIT AND HOLD AS PUBLISHED, MAINTAIN 4000, SQUAWK APPROPRIATE BEACON CODE.

RWY 16: AT ELBEE, TURN LEFT DIRECT STEIL AND EXECUTE APPROACH, IF UNABLE HOLD AS PUBLISHED, MAINTAIN 4000, SQUAWK APPROPRIATE BEACON CODE.

FEDERAL AVIATION ADMINISTRATION
FLIGHT STANDARDS SERVICE
STANDARD TERMINAL ARRIVAL (STAR)

Bearings, headings, courses, tracks and radials are magnetic. Elevations and altitudes are in feet, MSL. Altitudes are minimum altitudes unless otherwise indicated.
Distances are in nautical miles (NM). Graphic depictions attached.

Arrival Name	Number	STAR Computer Code	Superseded Number	Dated	Effective Date
ADYMS (RNAV)	THREE	ADYMS.ADYMS3	TWO	10/15/2015	27 JAN 2022

REMARKS:

ABBREVIATED AMDT DOES NOT MEET PERIODIC REVIEW REQUIREMENTS.

ADDITIONAL FLIGHT DATA:

DME/DME ASSESSMENT: SAT (RNP 2.0)

REFERENCE MAGNETIC VARIATION = KTCM 15E/2020

CHART LOCALIZERS: I-TCM AND I-MAR.

FLIGHT INSPECTED BY:

FLIGHT INSPECTION REVIEW NOT REQUIRED - PROCESSED IAW AIRCRAFT OPERATIONS GROUP (AJF-10) MEMO, APRIL 29, 2020

Name

Organization

Date

Digitally signed by

DAVID DANNER

Sep 07, 2021

Signature

Digitally signed by

DAVID DANNER

Sep 07, 2021

DEVELOPED BY:

DAN POWELL

Name

AJV-A442

Organization

08/16/2021

Date

Signature

Digitally signed by

DAVID DANNER

Sep 07, 2021

APPROVED BY:

PAT MULQUEEN

Name

AJV-A440

Organization

Date

Signature

CHANGES:

1. REMOVED MEAS AND MOCAS FROM COMMON ROUTE.
2. REFORMATTED PBN AND EQUIPMENT NOTES.
3. REMOVED TCM VORTAC (INCLUDES RECOMMENDED NAVAID) FROM PROCEDURE.

REASONS:

1. NO LONGER PUBLISHED IAW 8260.19I.
2. IAW 8260.19I, 4-5-3.
3. NO LONGER APPLICABLE TO PROCEDURE.

FEDERAL AVIATION ADMINISTRATION

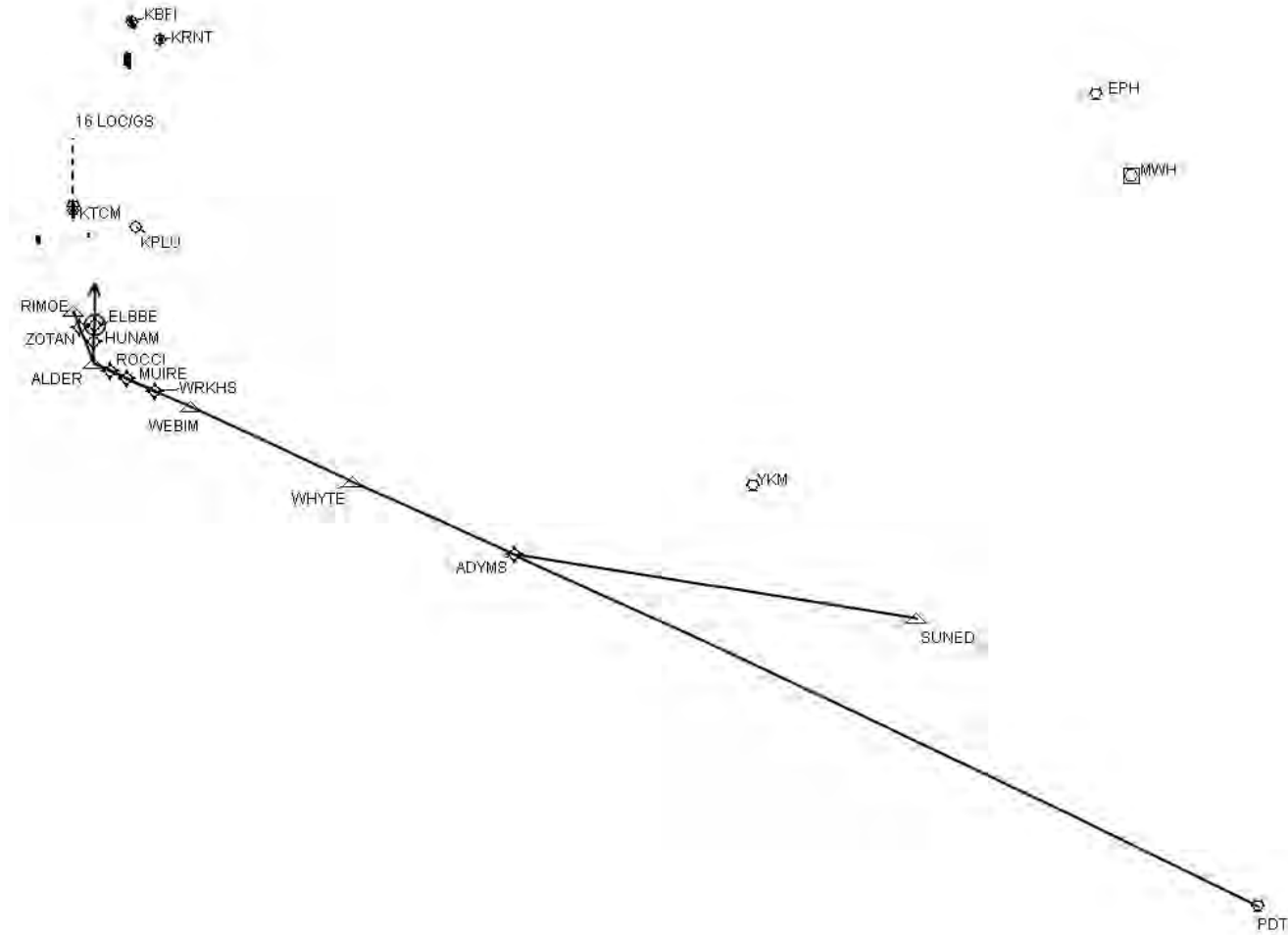
FLIGHT STANDARDS SERVICE

STANDARD TERMINAL ARRIVAL (STAR)

11/03/2021

Bearings, headings, courses, tracks and radials are magnetic. Elevations and altitudes are in feet. MSL. Altitudes are minimum altitudes unless otherwise indicated.
Distances are in nautical miles (NM). Graphic depiction attached.

Arrival Name	Number	STAR Computer Code	Superseded Number	Dated	Effective Date
ADYMS (RNAV)	THREE	ADYMS.ADYMS3	TWO	10/15/2015	27 JAN 2022

Graphic Depiction 1

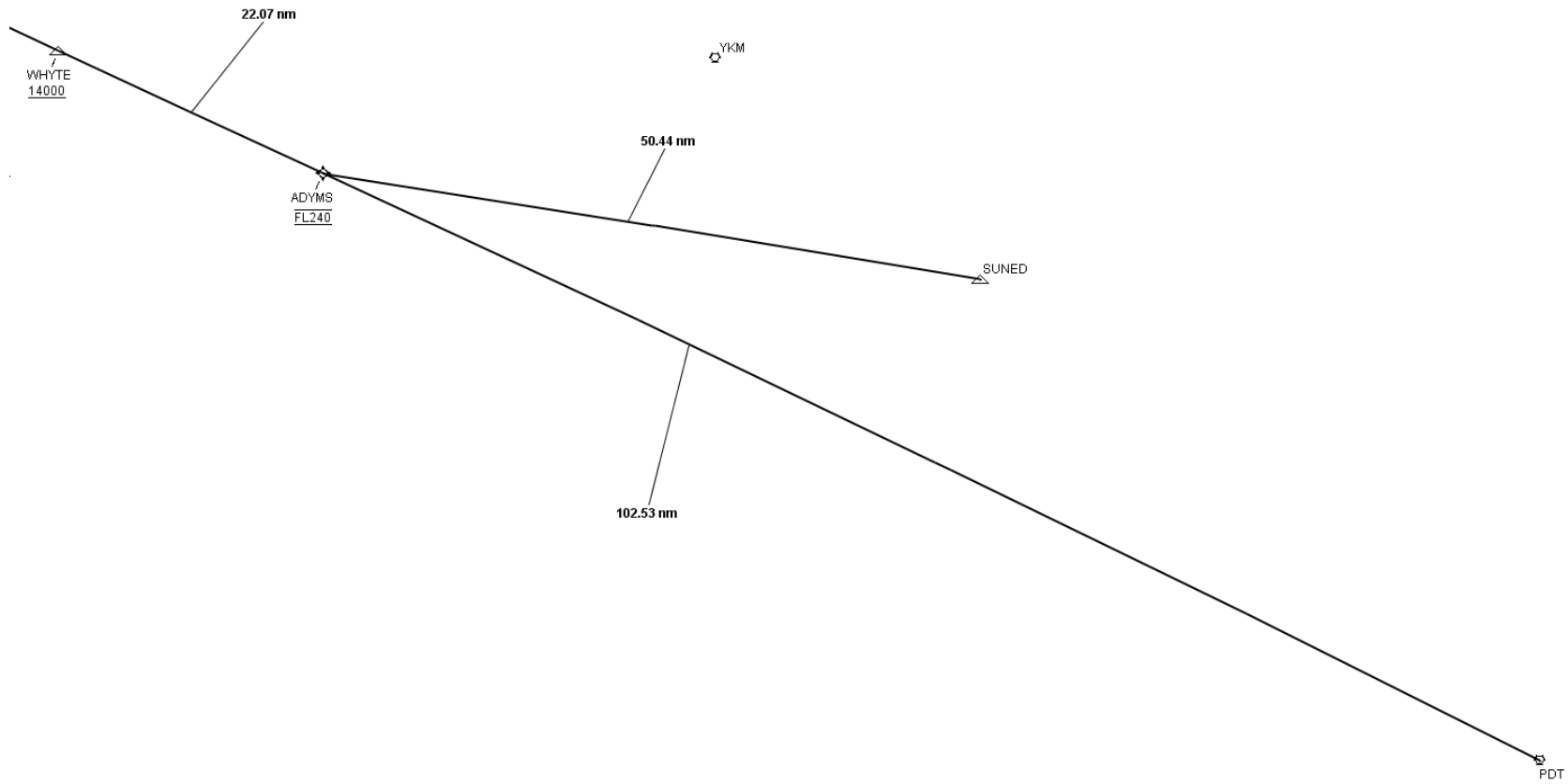
FEDERAL AVIATION ADMINISTRATION
FLIGHT STANDARDS SERVICE
STANDARD TERMINAL ARRIVAL (STAR)

11/03/2021

27

Bearings, headings, courses, tracks and radials are magnetic. Elevations and altitudes are in feet. MSL. Altitudes are minimum altitudes unless otherwise indicated.
Distances are in nautical miles (NM). Graphic depiction attached.

Arrival Name	Number	STAR Computer Code	Superseded Number	Dated	Effective Date
ADYMS (RNAV)	THREE	ADYMS.ADYMS3	TWO	10/15/2015	27 JAN 2022
Graphic Depiction 2					



FEDERAL AVIATION ADMINISTRATION

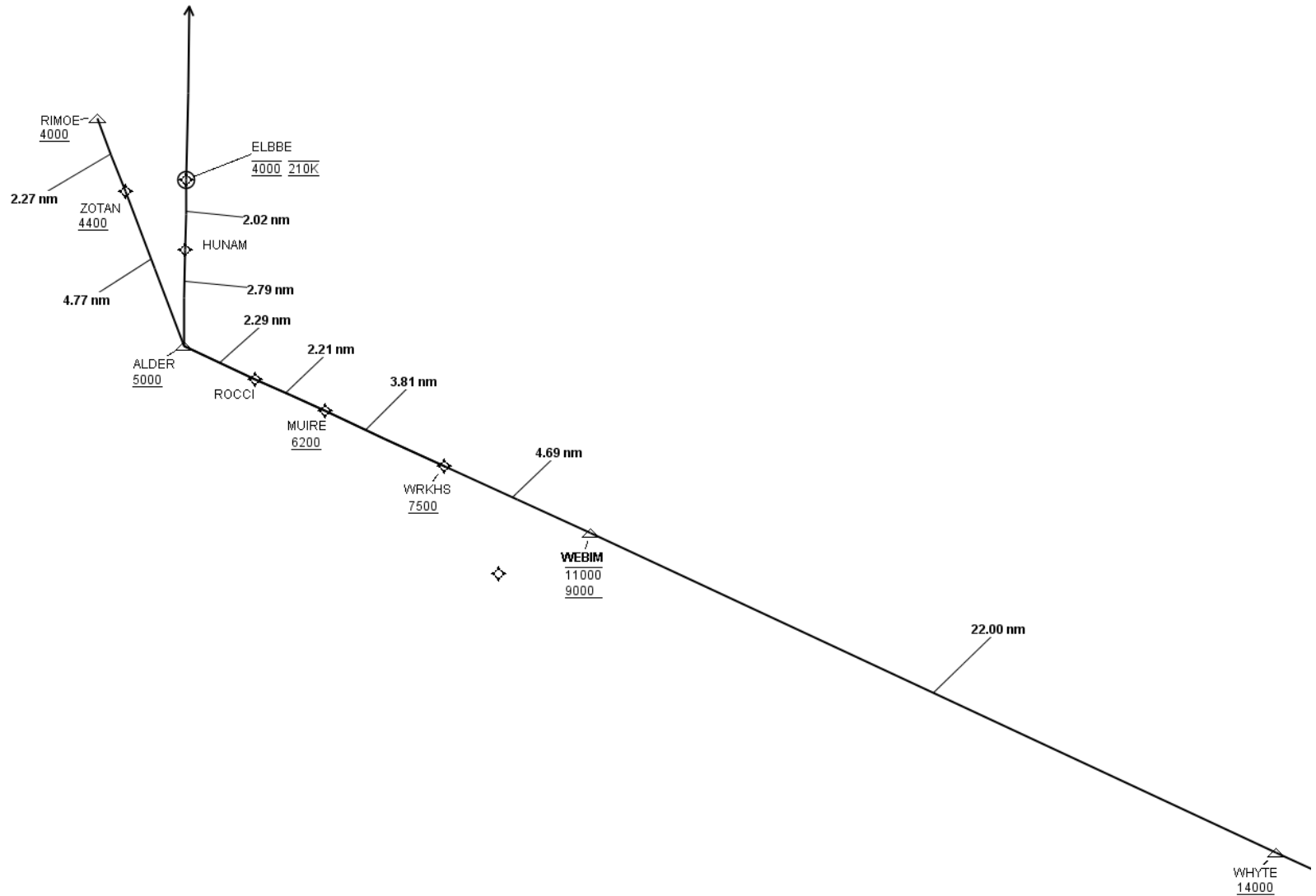
FLIGHT STANDARDS SERVICE

STANDARD TERMINAL ARRIVAL (STAR))

Bearings, headings, courses, tracks and radials are magnetic. Elevations and altitudes are in feet. MSL. Altitudes are minimum altitudes unless otherwise indicated.
Distances are in nautical miles (NM). Graphic depiction attached.

Arrival Name	Number	STAR Computer Code	Superseded Number	Dated	Effective Date
ADYMS (RNAV)	THREE	ADYMS.ADYMS3	TWO	10/15/2015	27 JAN 2022

Graphic Depiction 3



FEDERAL AVIATION ADMINISTRATION

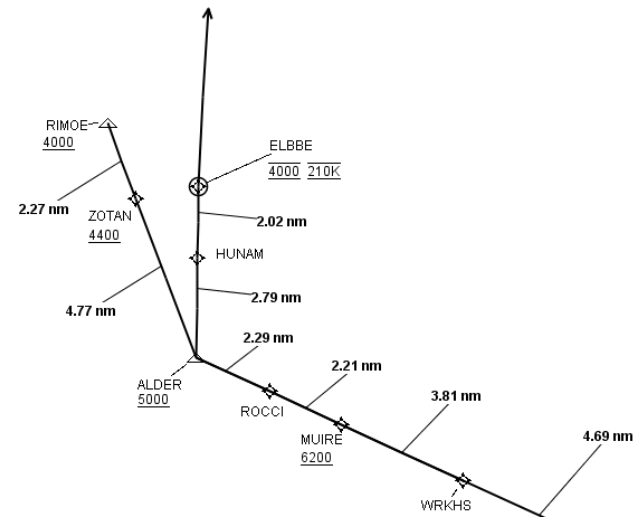
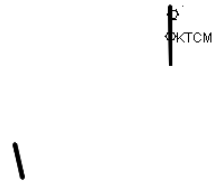
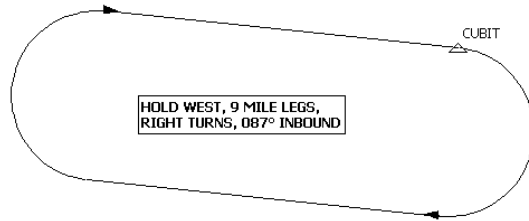
FLIGHT STANDARDS SERVICE

STANDARD TERMINAL ARRIVAL (STAR)

Bearings, headings, courses, tracks and radials are magnetic. Elevations and altitudes are in feet. MSL. Altitudes are minimum altitudes unless otherwise indicated.
Distances are in nautical miles (NM). Graphic depiction attached.

Arrival Name	Number	STAR Computer Code	Superseded Number	Dated	Effective Date
ADYMS (RNAV)	THREE	ADYMS.ADYMS3	TWO	10/15/2015	27 JAN 2022

Graphic Depiction 4



FEDERAL AVIATION ADMINISTRATION

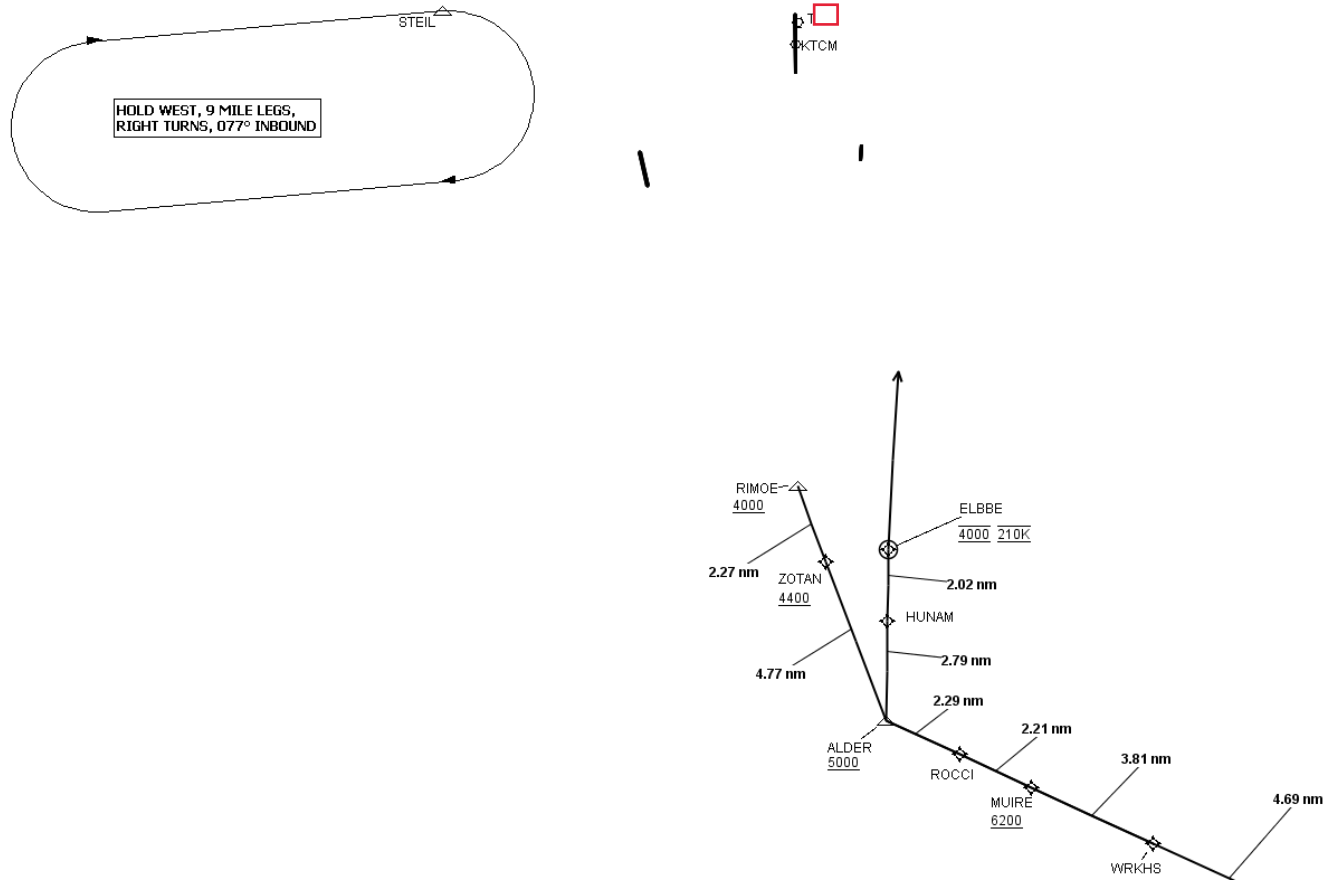
FLIGHT STANDARDS SERVICE

STANDARD TERMINAL ARRIVAL (STAR)

Bearings, headings, courses, tracks and radials are magnetic. Elevations and altitudes are in feet. MSL. Altitudes are minimum altitudes unless otherwise indicated.
Distances are in nautical miles (NM). Graphic depiction attached.

Arrival Name	Number	STAR Computer Code	Superseded Number	Dated	Effective Date
ADYMS (RNAV)	THREE	ADYMS.ADYMS3	TWO	10/15/2015	27 JAN 2022

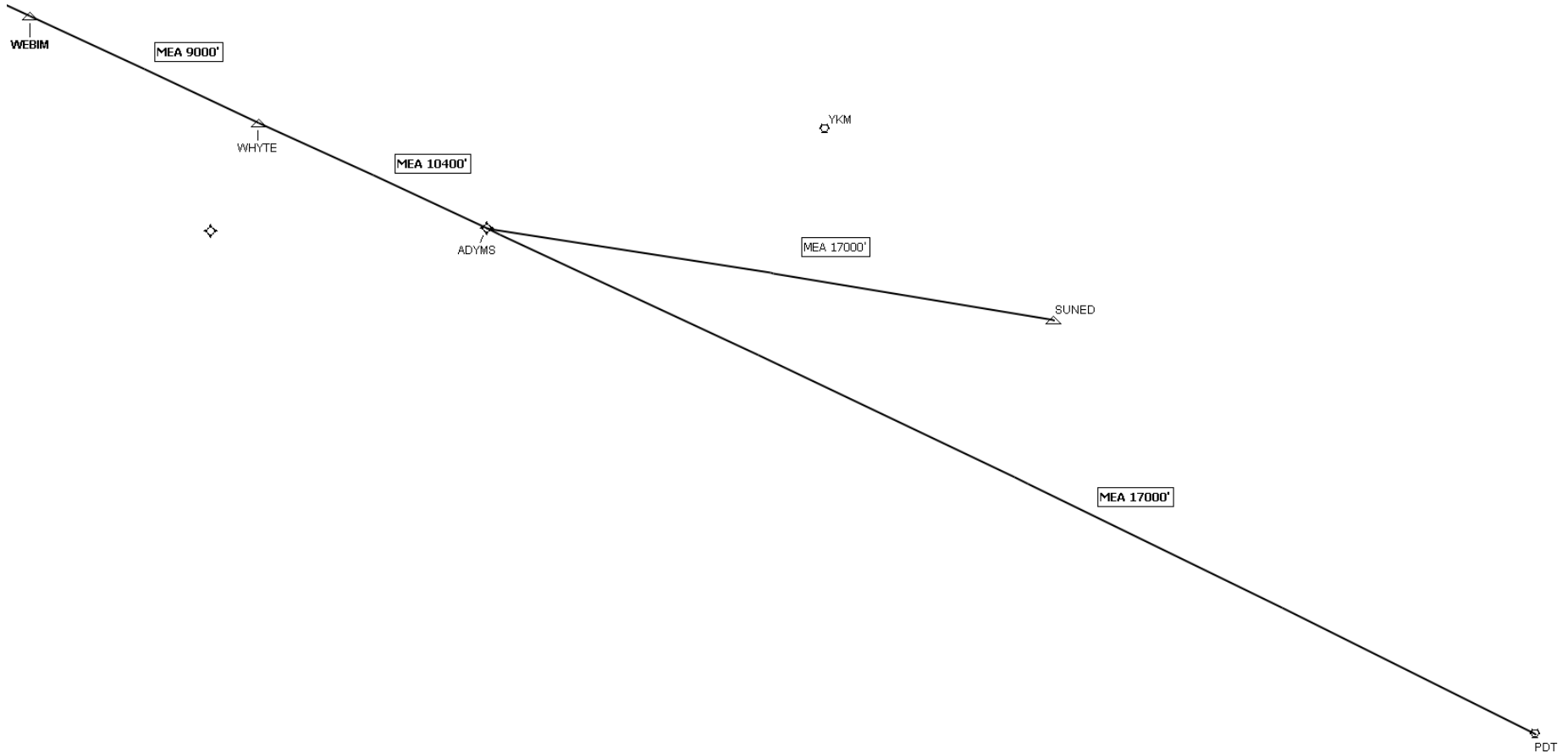
Graphic Depiction 5



FEDERAL AVIATION ADMINISTRATION
FLIGHT STANDARDS SERVICE
STANDARD TERMINAL ARRIVAL (STAR)

Bearings, headings, courses, tracks and radials are magnetic. Elevations and altitudes are in feet. MSL. Altitudes are minimum altitudes unless otherwise indicated.
Distances are in nautical miles (NM). Graphic depiction attached.

Arrival Name	Number	STAR Computer Code	Superseded Number	Dated	Effective Date
ADYMS (RNAV)	THREE	ADYMS.ADYMS3	TWO	10/15/2015	27 JAN 2022
Graphic Depiction 6					



FEDERAL AVIATION ADMINISTRATION

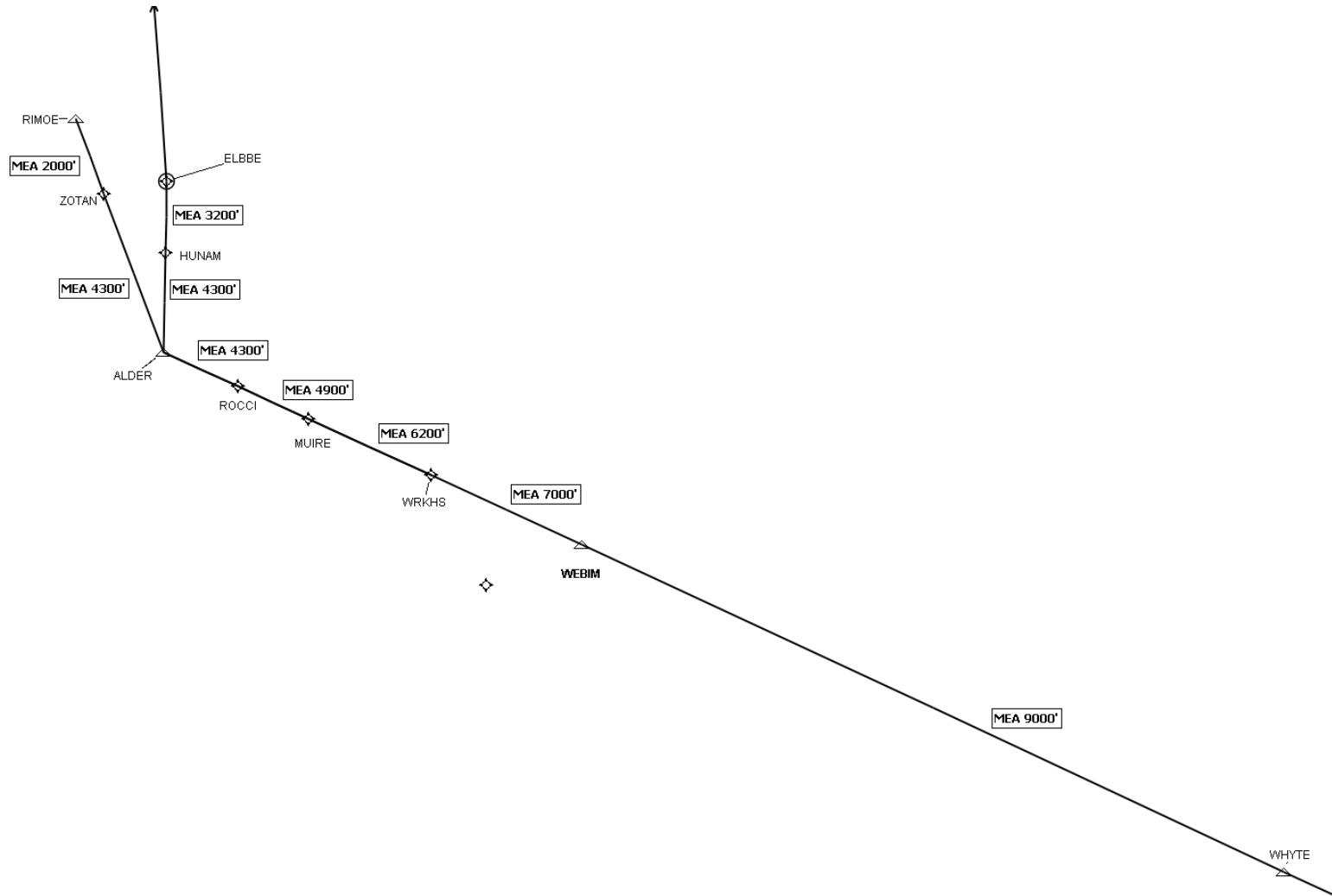
FLIGHT STANDARDS SERVICE

STANDARD TERMINAL ARRIVAL (STAR)

11/03/2021

Bearings, headings, courses, tracks and radials are magnetic. Elevations and altitudes are in feet. MSL. Altitudes are minimum altitudes unless otherwise indicated.
Distances are in nautical miles (NM). Graphic depiction attached.

Arrival Name	Number	STAR Computer Code	Superseded Number	Dated	Effective Date
ADYMS (RNAV)	THREE	ADYMS.ADYMS3	TWO	10/15/2015	27 JAN 2022

Graphic Depiction 7

**FEDERAL AVIATION ADMINISTRATION
FLIGHT STANDARDS SERVICE
STAR (DATA RECORD)**

Arrival Name ADYMS (RNAV)		Number THREE		STAR Computer Code ADYMS.ADYMS3		Superseded Number TWO		Dated 10/15/2015		Effective Date 27 JAN 2022	
FIX/NAVAID		LAT/LONG		C	FO/FB	LEG TYPE	TC	DIST (NM)	ALTITUDE	SPEED	REMARKS
En Route Transition											
PDT VORTAC		454154.31N / 1185619.33W		Y		IF					PDT.ADYMS3
ADYMS		462534.22N / 1210932.29W		Y	FB	TF	296.01	102.53	AT FL240		
En Route Transition											
SUNED		461741.55N / 1195736.15W		Y		IF					SUNED.ADYMS3
ADYMS		462534.22N / 1210932.29W		Y	FB	TF	279.42	50.44	AT FL240		
Common Route											
ADYMS		462534.22N / 1210932.29W		Y		IF			AT FL240		ADYMS.ADYMS3
WHYTE		463442.43N / 1213837.21W		Y	FB	TF	294.64	22.07	AT/ABOVE 14000		
WEBIM		464354.66N / 1220737.58W		Y	FB	TF	294.92	22.00	9000B11000		
WRKHS		464551.32N / 1221350.40W		Y	FB	TF	294.51	04.69	AT/ABOVE 7500		
Runway Transition											
WRKHS		464551.32N / 1221350.40W		Y		IF			AT/ABOVE 7500		
MUIRE		464725.56N / 1221852.99W		Y	FB	TF	294.42	03.81	AT/ABOVE 6200		
ROCCI		464820.78N / 1222148.86W		Y	FB	TF	294.59	02.21			
ALDER		464917.62N / 1222451.19W		Y	FB	TF	294.44	02.29	AT/ABOVE 5000		
HUNAM		465205.12N / 1222447.61W		Y	FB	TF	000.84	02.79			
ELBBE		465405.96N / 1222444.93W		Y	FO	TF	000.87	02.02	AT 4000	AT 210K	
KTCM:RWY 16						FM	001.00				
Runway Transition											
WRKHS		464551.32N / 1221350.40W		Y		IF			AT/ABOVE 7500		
MUIRE		464725.56N / 1221852.99W		Y	FB	TF	294.42	03.81	AT/ABOVE 6200		
ROCCI		464820.78N / 1222148.86W		Y	FB	TF	294.59	02.21			
ALDER		464917.62N / 1222451.19W		Y	FB	TF	294.44	02.29	AT/ABOVE 5000		

**FEDERAL AVIATION ADMINISTRATION
FLIGHT STANDARDS SERVICE
STAR (DATA RECORD)**

Arrival Name ADYMS (RNAV)		Number THREE		STAR Computer Code ADYMS.ADYMS3		Superseded Number TWO		Dated 10/15/2015		Effective Date 27 JAN 2022	
FIX/NAVAID		LAT/LONG		C	FO/FB	LEG TYPE	TC	DIST (NM)	ALTITUDE	SPEED	REMARKS
ZOTAN		465344.99N / 1222719.86W		Y	FB	TF	339.14	04.77	AT/ABOVE 4400		
RIMOE		465551.93N / 1222830.57W		Y	FB	TF	339.11	02.27	AT/ABOVE 4000		
KTCM:RWY 34											