

This is a corrected copy of the procedure published in NFDD 105.

\*\*See page 3 for details. \*\*

FEDERAL AVIATION ADMINISTRATION  
FLIGHT STANDARDS SERVICE  
STANDARD TERMINAL ARRIVAL (STAR)

Bearings, headings, courses, tracks and radials are magnetic. Elevations and altitudes are in feet, MSL. Altitudes are minimum altitudes unless otherwise indicated.  
Distances are in nautical miles (NM). Graphic depictions attached.

Arrival Name RIDES (RNAV)	Number ONE	STAR Computer Code RIDES.RIDES1	Superseded Number NONE	Dated	Effective Date 12 AUG 2021				
TRANSITION ROUTES:									
Transition Name	Transition Computer Codes	From FIX/NAVAID	To FIX/NAVAID	Course	Distance	MEA	MOCA	MAA	Crossing Altitudes / Fixes
BERTH	BERTH.RIDES1	BERTH	BERTH						
			JUNIP	316.85	26.92	16000	1600		
			ZALUP	305.22	64.95	14000	1600		
			RIDES	302.70	19.18	6000	1500		
CHEFS	CHEFS.RIDES1	CHEFS	CHEFS						BETWEEN FL190 AND FL210
			MOOTS	344.90	12.44	6000	1600		
			RIDES	333.90	24.90	6000	1500		
KUTNE	KUTNE.RIDES1	KUTNE	KUTNE						
			CORNN	018.12	54.63	FL180	1600		
			CHEFS	345.63	47.87	16000	1600		BETWEEN FL190 AND FL210
			MOOTS	344.90	12.44	6000	1600		
			RIDES	333.90	24.90	6000	1500		
LAIZY	LAIZY.RIDES1	LAIZY	LAIZY						
			CORNN	298.89	30.74	FL180	2600		
			CHEFS	345.63	47.87	16000	1600		BETWEEN FL190 AND FL210
			MOOTS	344.90	12.44	6000	1600		
			RIDES	333.90	24.90	6000	1500		
OCTAL	OCTAL.RIDES1	OCTAL	OCTAL						
			CORNN	340.88	31.11	FL180	1600		
			CHEFS	345.63	47.87	16000	1600		BETWEEN FL190 AND FL210
			MOOTS	344.90	12.44	6000	1600		
			RIDES	333.90	24.90	6000	1500		
SPIFF	SPIFF.RIDES1	SPIFF	SPIFF						
			ZALUP	270.54	25.38	14000	1600		
			RIDES	302.70	19.18	6000	1500		
WAPOM	WAPOM.RIDES1	WAPOM	WAPOM						
			RIDES	346.47	37.81	6000	1600		

FEDERAL AVIATION ADMINISTRATION  
FLIGHT STANDARDS SERVICE  
STANDARD TERMINAL ARRIVAL (STAR)

Bearings, headings, courses, tracks and radials are magnetic. Elevations and altitudes are in feet, MSL. Altitudes are minimum altitudes unless otherwise indicated.  
Distances are in nautical miles (NM). Graphic depictions attached.

Arrival Name	Number	STAR Computer Code	Superseded Number	Dated	Effective Date
<b>RIDES (RNAV)</b>	<b>ONE</b>	<b>RIDES.RIDES1</b>	<b>NONE</b>		<b>12 AUG 2021</b>

ARRIVAL ROUTE DESCRIPTION:

KMCO: FROM RIDES ON TRACK 344.01/9.93 TO WISRD.

LANDING KMCO RWY 17L/R, 18L/R: FROM WISRD ON TRACK 000.08/3.06 TO CROSS THEAM AT OR ABOVE 10000, THEN ON TRACK 000.81/9.06 TO CROSS PARRX BETWEEN 9000 AND 11000 AND AT 250 KIAS, THEN ON TRACK 005.06/7.10 TO CROSS HAANZ BETWEEN 8000 AND 9000 AND AT 220 KIAS, THEN ON TRACK 005.58/13.01 TO CROSS PTMAN AT 5000 AND AT 210 KIAS, THEN ON TRACK 005.58. EXPECT RADAR VECTORS TO FINAL APPROACH COURSE.

LANDING KMCO RWY 35L/R, 36L/R: FROM WISRD ON TRACK 339.16/4.29 TO CROSS HAHNA AT 6000 AND AT 210 KIAS, THEN ON TRACK 339.16. EXPECT ILS OR RNAV 35R APPROACH OR RADAR VECTORS TO FINAL APPROACH COURSE.

LANDING KISM: FROM RIDES ON TRACK 342.72/6.36 TO CROSS WIGET AT 8000, THEN ON HEADING 290.00 OR AS ASSIGNED BY ATC. EXPECT RADAR VECTORS TO FINAL APPROACH COURSE.

LANDING KLEE/KSFB/KORL: FROM RIDES ON TRACK 346.45/6.27 TO CROSS MPLEX AT 12000 AND AT 280 KIAS, THEN ON HEADING 351.00 OR AS ASSIGNED BY ATC. EXPECT RADAR VECTORS TO FINAL APPROACH COURSE.

PROCEDURAL DATA NOTES:

NOTE: DESCEND VIA MACH NUMBER UNTIL INTERCEPTING 280K. MAINTAIN 280K UNTIL SLOWED BY THE STAR OR ASSIGNED BY ATC.

NOTE: EXPECT "DESCEND VIA" CLEARANCE AND LANDING DIRECTION (NORTH OR SOUTH) BY ARTCC. FOR VERTICAL NAVIGATION PLANNING, LANDING SOUTH, SELECT RWY 17L, LANDING NORTH, SELECT RWY 35R.

NOTE: JET AIRCRAFT ONLY.

NOTE: MCO APPROACH WILL ISSUE LANDING RUNWAY.

NOTE: MCO LANDING NORTH: EXPECT RADAR VECTORS PRIOR TO HAHNA.

NOTE: MCO LANDING SOUTH: EXPECT RADAR VECTORS PRIOR TO PTMAN.

NOTE: LANDING ISM, EXPECT RADAR VECTORS PRIOR TO WIGET.

NOTE: LANDING LEE, ORL, SFB, EXPECT RADAR VECTORS PRIOR TO MPLEX.

NOTE: LAIZY AND SPIFF TRANSITIONS, ATC ASSIGNED ONLY.

NOTE: BERTH TRANSITION, ATC ASSIGNED ONLY AT OR ABOVE FL240.

PBN REQUIREMENT NOTES:

RNAV 1 – DME/DME/IRU OR GPS.

EQUIPMENT REQUIREMENT NOTES:

RADAR REQUIRED FOR NON-GPS EQUIPPED AIRCRAFT

FIXES AND/OR HOLDING PATTERNS:

CHART HOLDING AT RIDES: HOLD S, LT, 344.01 INBOUND, 10 NM LEGS.

CHART HOLDING AT ZALUP: HOLD SE, RT, 305.22 INBOUND, 10 NM LEGS.

CHART SERAY, HAMMY.

COMMUNICATIONS:

CHART: ORLANDO APP CON



FEDERAL AVIATION ADMINISTRATION  
FLIGHT STANDARDS SERVICE  
STANDARD TERMINAL ARRIVAL (STAR)

Bearings, headings, courses, tracks and radials are magnetic. Elevations and altitudes are in feet, MSL. Altitudes are minimum altitudes unless otherwise indicated.  
Distances are in nautical miles (NM). Graphic depictions attached.

Arrival Name	Number	STAR Computer Code	Superseded Number	Dated	Effective Date
<b>RIDES (RNAV)</b>	<b>ONE</b>	<b>RIDES.RIDES1</b>	<b>NONE</b>		<b>12 AUG 2021</b>

AIRPORTS SERVED:

ORLANDO INTL, ORLANDO, FL (KMCO)  
EXECUTIVE, ORLANDO, FL (KORL)  
KISSIMMEE GATEWAY, ORLANDO, FL (KISM)  
LEESBURG INTL, LEESBURG, FL (KLEE)  
ORLANDO SANFORD INTL, ORLANDO, FL (KSFB)

LOST COMMUNICATIONS PROCEDURE:

KMCO LANDING NORTH: CONTINUE TRACK TO HAHNA, CONDUCT RWY 35R APPROACH.  
KMCO LANDING SOUTH: CONTINUE TRACK TO PTMAN, THEN PROCEED DIRECT HAMMY, CONDUCT RWY 18R APPROACH.

REMARKS:

ENVIRONMENTAL REVIEW UNDER ORDER 1050.1 (LATEST EDITION) AND THE NOISE SCREENING HAVE BEEN ACCOMPLISHED.  
MEAs AT OR ABOVE FL180 FOR COMM AND DME/DME/IRU SOLUTIONS.

ADDITIONAL FLIGHT DATA:

DME/DME ASSESSMENT: SAT (RNP 2.0)  
REFERENCE MAGNETIC VARIATION = KMCO 06W/2015  
CHART AT MPLEX TERMINUS: LDG KLEE/KSFB/KORL  
CHART AT WIGET TERMINUS: LDG KISM  
CHART AT PTMAN TERMINUS: LDG KMCO RWY 17L/R, 18L/R  
CHART AT HAHNA TERMINUS: LDG KMCO RWY 35L/R, 36L/R

FLIGHT INSPECTED BY:*Digitally signed by***JOHN BORDY**

Name

Organization

Date

Signature Jun 04, 2021

DEVELOPED BY:

JEFFREY ECKMAN

FICO

05/24/2021

*Digitally signed by***JOHN BORDY**

JOHN BORDY (STEVEN WINNER)

AJV-A422

03/01/2021

Name

Organization

Date

Signature Jun 04, 2021

APPROVED BY:

MARLON ROBINSON

AJV-A420

Date

Signature Jun 04, 2021

Name

Organization

CHANGES:REASONS:

06/01/2021: THIS IS A CORRECTED COPY OF THE FORM APPROVED ON 05/26/2021.

1. BERTH TRANSITION NOTE CHANGED FROM "...EXCEPT AT OR ABOVE FL240" TO "...AT OR ABOVE FL240".

FAA Form 8260-17.1 (06/15) Generated by: TARGETS: 6.2.0; WGS84: 3.2.8 (09/30/20); Common RS: 2.8.0 (10/14/20); RNAV STAR RS: 2.7.0 (10/14/20)

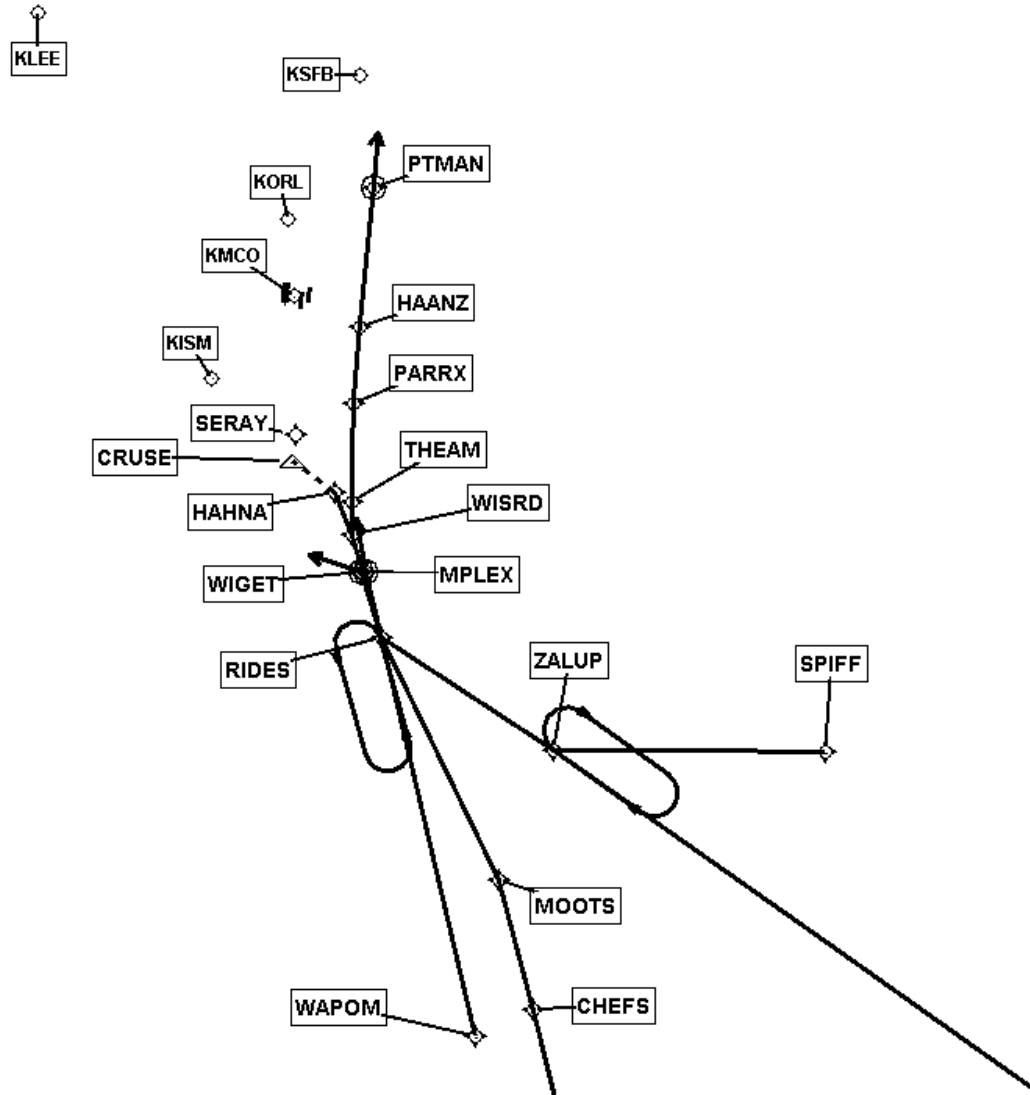
QUALITY  
49  
CHECKED

FEDERAL AVIATION ADMINISTRATION  
FLIGHT STANDARDS SERVICE  
STANDARD TERMINAL ARRIVAL (STAR)

Bearings, headings, courses, tracks and radials are magnetic. Elevations and altitudes are in feet, MSL. Altitudes are minimum altitudes unless otherwise indicated.  
Distances are in nautical miles (NM). Graphic depictions attached.

Arrival Name	Number	STAR Computer Code	Superseded Number	Dated	Effective Date
<b>RIDES (RNAV)</b>	<b>ONE</b>	<b>RIDES.RIDES1</b>	<b>NONE</b>		<b>12 AUG 2021</b>

Graphic Depiction 1



**RNAV)**

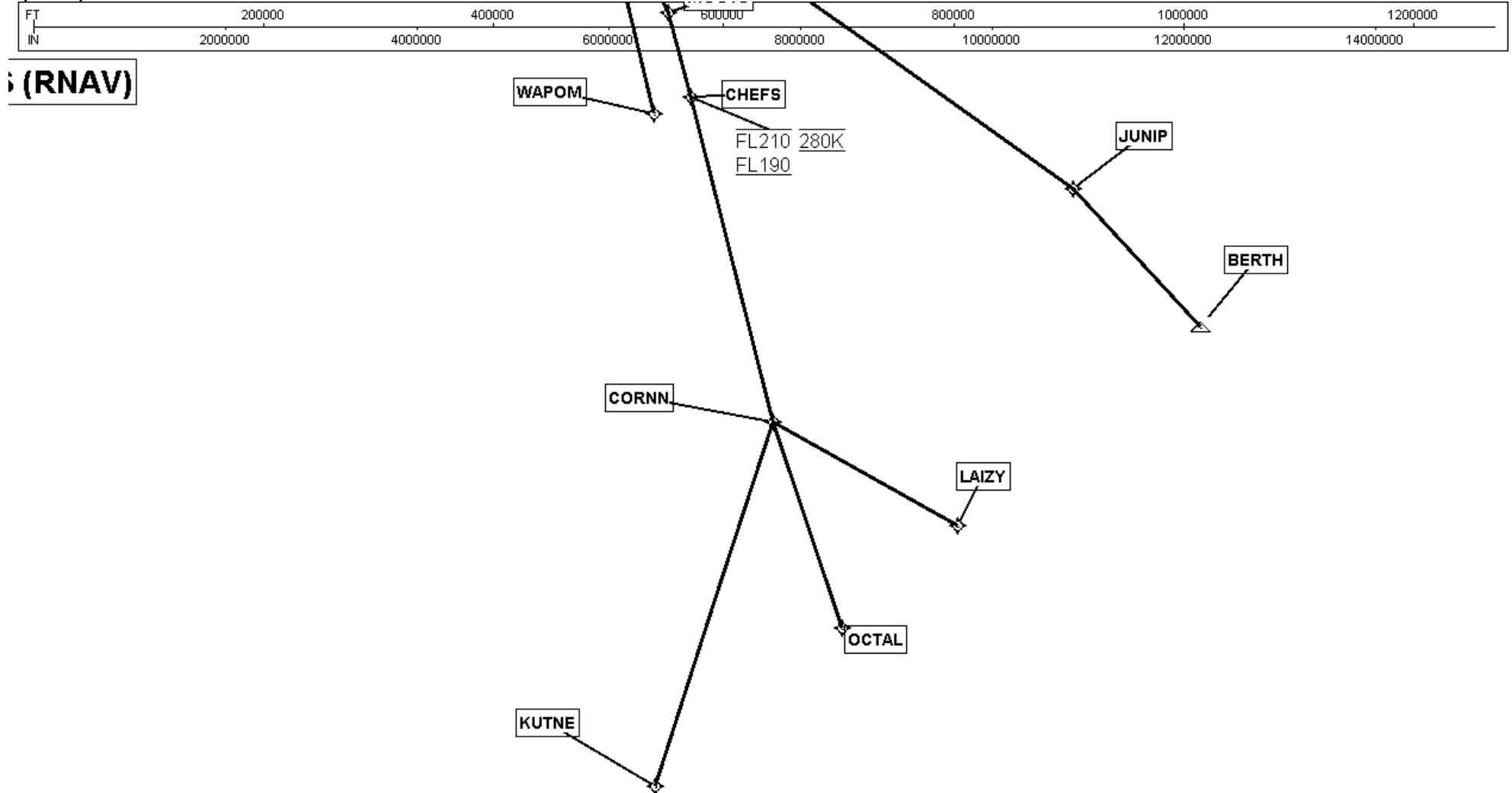
**JUNIP**

FEDERAL AVIATION ADMINISTRATION  
FLIGHT STANDARDS SERVICE  
STANDARD TERMINAL ARRIVAL (STAR)

Bearings, headings, courses, tracks and radials are magnetic. Elevations and altitudes are in feet, MSL. Altitudes are minimum altitudes unless otherwise indicated.  
Distances are in nautical miles (NM). Graphic depictions attached.

Arrival Name	Number	STAR Computer Code	Superseded Number	Dated	Effective Date
<b>RIDES (RNAV)</b>	<b>ONE</b>	<b>RIDES.RIDES1</b>	<b>NONE</b>		<b>12 AUG 2021</b>

Graphic Depiction 2

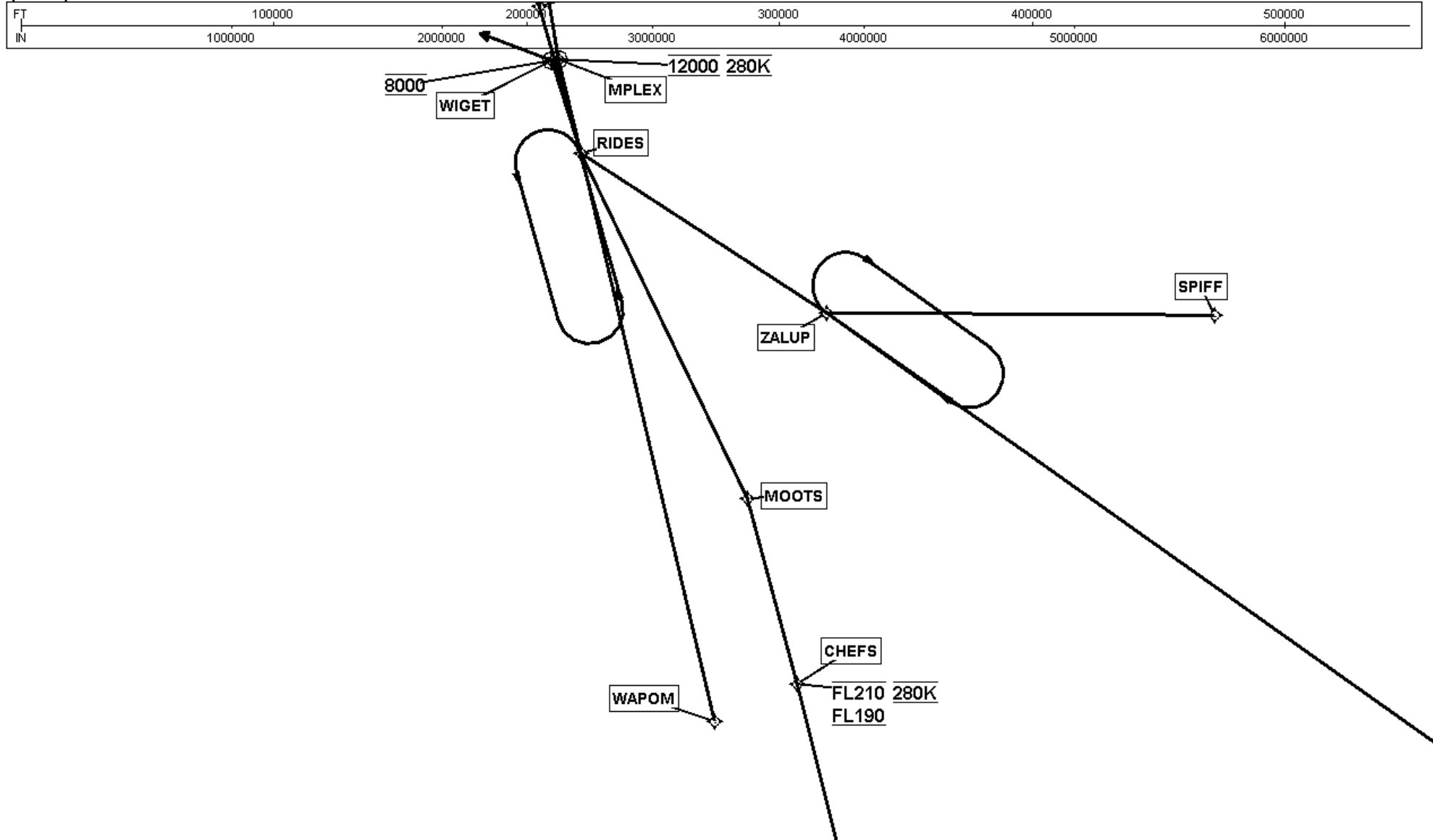


FEDERAL AVIATION ADMINISTRATION  
FLIGHT STANDARDS SERVICE  
STANDARD TERMINAL ARRIVAL (STAR)

Bearings, headings, courses, tracks and radials are magnetic. Elevations and altitudes are in feet, MSL. Altitudes are minimum altitudes unless otherwise indicated.  
Distances are in nautical miles (NM). Graphic depictions attached.

Arrival Name	Number	STAR Computer Code	Superseded Number	Dated	Effective Date
<b>RIDES (RNAV)</b>	<b>ONE</b>	<b>RIDES.RIDES1</b>	<b>NONE</b>		<b>12 AUG 2021</b>

Graphic Depiction 3

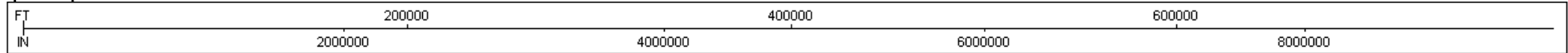


FEDERAL AVIATION ADMINISTRATION  
FLIGHT STANDARDS SERVICE  
STANDARD TERMINAL ARRIVAL (STAR)

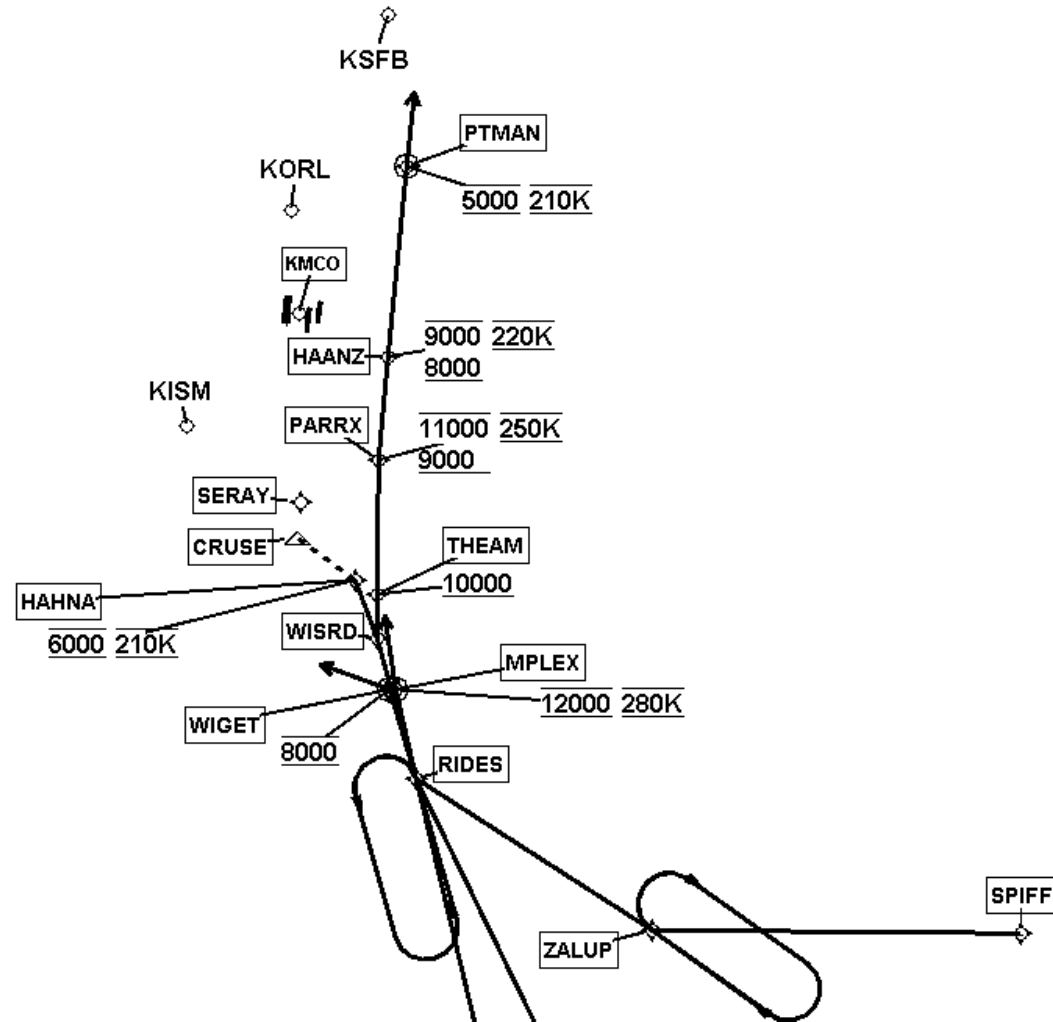
Bearings, headings, courses, tracks and radials are magnetic. Elevations and altitudes are in feet, MSL. Altitudes are minimum altitudes unless otherwise indicated.  
Distances are in nautical miles (NM). Graphic depictions attached.

Arrival Name	Number	STAR Computer Code	Superseded Number	Dated	Effective Date
<b>RIDES (RNAV)</b>	<b>ONE</b>	<b>RIDES.RIDES1</b>	<b>NONE</b>		<b>12 AUG 2021</b>

## Graphic Depiction 4



KLEE

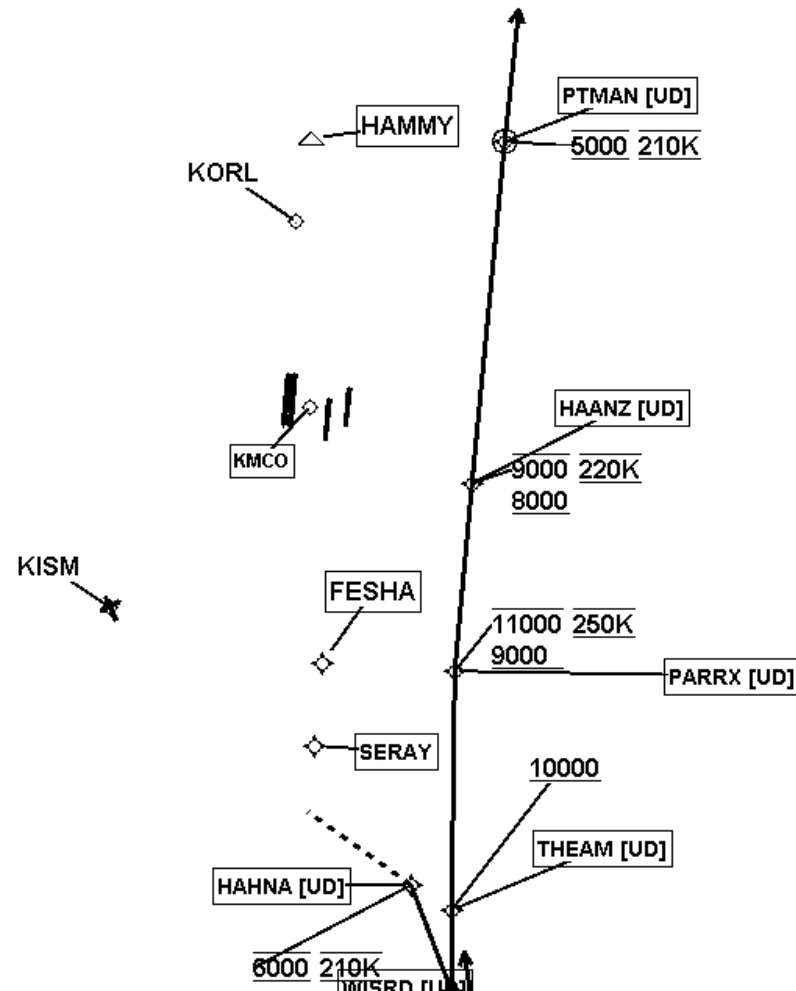
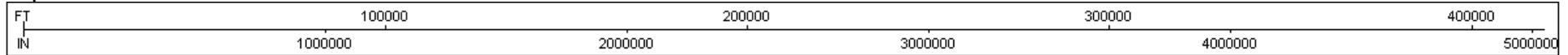


FEDERAL AVIATION ADMINISTRATION  
FLIGHT STANDARDS SERVICE  
STANDARD TERMINAL ARRIVAL (STAR)

Bearings, headings, courses, tracks and radials are magnetic. Elevations and altitudes are in feet, MSL. Altitudes are minimum altitudes unless otherwise indicated.  
Distances are in nautical miles (NM). Graphic depictions attached.

Arrival Name	Number	STAR Computer Code	Superseded Number	Dated	Effective Date
<b>RIDES (RNAV)</b>	<b>ONE</b>	<b>RIDES.RIDES1</b>	<b>NONE</b>		<b>12 AUG 2021</b>

## Graphic Depiction 5





FEDERAL AVIATION ADMINISTRATION  
FLIGHT STANDARDS SERVICE  
STAR (DATA RECORD)

Arrival Name RIDES (RNAV)		Number ONE		STAR Computer Code RIDES.RIDES1		Superseded Number NONE		Dated	Effective Date 12 AUG 2021
FIX/NAVAID	LAT/LONG	C	FO/FB	LEG TYPE	TC	DIST (NM)	ALTITUDE	SPEED	REMARKS
En Route Transition									
BERTH	265712.99N / 0791931.35W	Y		IF					BERTH.RIDES1
JUNIP	271450.73N / 0794222.43W	Y	FB	TF	310.85	26.92			
ZALUP	274624.15N / 0804616.83W	Y	FB	TF	299.22	64.95			
RIDES	275501.47N / 0810537.63W	Y	FB	TF	296.70	19.18			
En Route Transition									
CHEFS	272214.97N / 0804538.96W	Y		IF			FL190BFL210	AT 280K	CHEFS.RIDES1
MOOTS	273353.00N / 0805041.25W	Y	FB	TF	338.90	12.44			
RIDES	275501.47N / 0810537.63W	Y	FB	TF	327.90	24.90			
En Route Transition									
KUTNE	254342.77N / 0803943.96W	Y		IF					KUTNE.RIDES1
CORNN	263716.28N / 0802655.91W	Y	FB	TF	012.12	54.63			
CHEFS	272214.97N / 0804538.96W	Y	FB	TF	339.63	47.87	FL190BFL210	AT 280K	
MOOTS	273353.00N / 0805041.25W	Y	FB	TF	338.90	12.44			
RIDES	275501.47N / 0810537.63W	Y	FB	TF	327.90	24.90			
En Route Transition									
LAIZY	262520.14N / 0795519.96W	Y		IF					LAIZY.RIDES1
CORNN	263716.28N / 0802655.91W	Y	FB	TF	292.89	30.74			
CHEFS	272214.97N / 0804538.96W	Y	FB	TF	339.63	47.87	FL190BFL210	AT 280K	
MOOTS	273353.00N / 0805041.25W	Y	FB	TF	338.90	12.44			
RIDES	275501.47N / 0810537.63W	Y	FB	TF	327.90	24.90			
En Route Transition									
OCTAL	260901.92N / 0801211.60W	Y		IF					OCTAL.RIDES1
CORNN	263716.28N / 0802655.91W	Y	FB	TF	334.88	31.11			
CHEFS	272214.97N / 0804538.96W	Y	FB	TF	339.63	47.87	FL190BFL210	AT 280K	

FEDERAL AVIATION ADMINISTRATION  
FLIGHT STANDARDS SERVICE  
STAR (DATA RECORD)

Arrival Name RIDES (RNAV)	Number ONE	STAR Computer Code RIDES.RIDES1		Superseded Number NONE		Dated	Effective Date <i>12 AUG 2021</i>		
FIX/NAVAID	LAT/LONG	C	FO/FB	LEG TYPE	TC	DIST (NM)	ALTITUDE	SPEED	REMARKS
MOOTS	273353.00N / 0805041.25W	Y	FB	TF	338.90	12.44			
RIDES	275501.47N / 0810537.63W	Y	FB	TF	327.90	24.90			
<b>En Route Transition</b>									
SPIFF	274852.31N / 0801747.79W	Y		IF					SPIFF.RIDES1
ZALUP	274624.15N / 0804616.83W	Y	FB	TF	264.54	25.38			
RIDES	275501.47N / 0810537.63W	Y	FB	TF	296.70	19.18			
<b>En Route Transition</b>									
WAPOM	271918.06N / 0805121.54W	Y		IF					WAPOM.RIDES1
RIDES	275501.47N / 0810537.63W	Y	FB	TF	340.47	37.81			
<b>Common Route</b>									
RIDES	275501.47N / 0810537.63W	Y		IF					RIDES.RIDES1
WISRD	280415.62N / 0810950.00W	Y	FB	TF	338.01	09.93			
<b>Common Route</b>									
RIDES	275501.47N / 0810537.63W	Y		IF					RIDES.RIDES1
WIGET	280052.69N / 0810827.91W	Y	FO	TF	336.72	06.36	AT 8000		
KISM				VM	284.00				
<b>Common Route</b>									
RIDES	275501.47N / 0810537.63W	Y		IF					RIDES.RIDES1
MPLEX	280056.94N / 0810759.89W	Y	FO	TF	340.45	06.27	AT 12000	AT 280K	
KLEE,KORL,KSFB				VM	345.00				
<b>Runway Transition</b>									
WISRD	280415.62N / 0810950.00W	Y		IF					
THEAM	280718.51N / 0811011.40W	Y	FB	TF	354.08	03.06	AT/ABOVE 10000		
PARRX	281621.59N / 0811107.10W	Y	FB	TF	354.81	09.06	9000B11000	AT 250K	

FEDERAL AVIATION ADMINISTRATION  
FLIGHT STANDARDS SERVICE  
STAR (DATA RECORD)

Arrival Name RIDES (RNAV)	Number ONE		STAR Computer Code RIDES.RIDES1		Superseded Number NONE		Dated		Effective Date <i>12 AUG 2021</i>
FIX/NAVAID	LAT/LONG	C	FO/FB	LEG TYPE	TC	DIST (NM)	ALTITUDE	SPEED	REMARKS
HAANZ	282328.89N / 0811114.99W	Y	FB	TF	359.06	07.10	8000B9000	AT 220K	
PTMAN	283631.53N / 0811121.45W	Y	FO	TF	359.58	13.01	AT 5000	AT 210K	
KMCO:RWY 17L,RWY 17R,RWY 18L,RWY 18R				FM	359.58				
Runway Transition									
WISRD	280415.62N / 0810950.00W	Y		IF					
HAHNA	280805.88N / 0811201.44W	Y	FO	TF	333.16	04.29	AT 6000	AT 210K	
KMCO:RWY 35L,RWY 35R,RWY 36L,RWY 36R				FM	333.16				