

FEDERAL AVIATION ADMINISTRATION
FLIGHT STANDARDS SERVICE
STANDARD TERMINAL ARRIVAL (STAR)

Bearings, headings, courses, tracks and radials are magnetic. Elevations and altitudes are in feet, MSL. Altitudes are minimum altitudes unless otherwise indicated.
Ceilings are in feet above airport elevation. Distances are in nautical miles. Visibilities are in statute miles or feet RVR unless otherwise indicated.

Arrival Name	Number	STAR Computer Code	Superseded Number	Dated	Effective Date
DMSTR (RNAV)	TWO	ETBUY.DMSTR2	ONE	03/24/2022	21 Mar 2024

TRANSITION ROUTES:

Transition Name	Transition Computer Codes	From FIX/NAVAID	To FIX/NAVAID	Course	Distance	MEA	MOCA	MAA	Crossing Altitudes / Fixes
JURDI	JURDI.DMSTR2	JURDI	JURDI						AT FL210
			ETBUY	045.02	31.84	4000	2000		
PETTO	PETTO.DMSTR2	PETTO	PETTO						
			JURDI	041.28	116.04	4000	2500		AT FL210
			ETBUY	045.02	31.84	4000	2000		
PYRES	PYRES.DMSTR2	PYRES	PYRES						
			JURDI	067.93	96.71	4000	2500		AT FL210
			ETBUY	045.02	31.84	4000	2000		
REDFH	REDFH.DMSTR2	REDFH	REDFH						
			HOGIL	016.97	35.00	4000	1800		
			ETBUY	017.92	09.58	4000	1800		

ARRIVAL ROUTE DESCRIPTION:

FROM ETBUY ON TRACK 015.29/14.38 TO DMSTR.

LANDING RWY 5L/R: FROM DMSTR ON TRACK 015.31/2.48 TO CROSS MALNR AT OR ABOVE 11000 AND AT 250 KIAS, THEN ON TRACK 029.68/6.18 TO CROSS NYGEL BETWEEN 9000 AND 10000, THEN ON TRACK 064.42/16.99 TO CROSS OTTOS AT 6000 AND AT 210 KIAS, EXPECT ILS OR LOC RWY 5L OR RWY 5R APPROACH.

LANDING RWY 23L: FROM DMSTR ON TRACK 048.46/21.78 TO CROSS WISPY BETWEEN 11000 AND 12000 AND AT 280 KIAS, THEN ON TRACK 062.72/16.09 TO CROSS CAKEY AT 8000, THEN ON TRACK 092.12/6.32 TO CROSS JODUS AT OR ABOVE 7000 AND AT 220 KIAS, THEN ON TRACK 092.19/3.00 TO CHIRM, THEN ON TRACK 054.10/2.00 TO CROSS KENCH AT 6000 AND AT 210 KIAS, THEN ON TRACK 054.10. EXPECT RNAV (RNP) Z RWY 23L APPROACH. NON-RNP AIRCRAFT: EXPECT RADAR VECTORS TO FINAL APPROACH COURSE.

LANDING RWY 23R: FROM DMSTR ON TRACK 048.46/21.78 TO CROSS WISPY BETWEEN 11000 AND 12000 AND AT 280 KIAS, THEN ON TRACK 062.72/16.09 TO CROSS CAKEY AT 8000, THEN ON TRACK 023.35/6.21 TO CROSS FRETO AT OR ABOVE 7000 AND AT 220 KIAS, THEN ON TRACK 023.37/3.26 TO ORENG, THEN ON TRACK 054.10/2.00 TO CROSS GLEYS AT 6000 AND AT 210 KIAS, THEN ON TRACK 054.10. EXPECT RNAV (RNP) Z RWY 23R APPROACH. NON-RNP AIRCRAFT: EXPECT RADAR VECTORS TO FINAL APPROACH COURSE.

PBN REQUIREMENT NOTES:

RNAV 1 - DME/DME/IRU OR GPS

EQUIPMENT REQUIREMENT NOTES:

RADAR REQUIRED

PROCEDURAL DATA NOTES:

NOTE: JET AIRCRAFT ONLY

NOTE: REDFH TRANSITION, ATC ASSIGNED ONLY.

NOTE: LANDING NORTHEAST: USE RWY 5L TRANSITION. EXPECT RUNWAY ASSIGNMENT FROM TRACON PRIOR TO DMSTR.

NOTE: LANDING SOUTHWEST: USE RWY 23R TRANSITION. EXPECT RUNWAY ASSIGNMENT FROM TRACON PRIOR TO DMSTR.



FEDERAL AVIATION ADMINISTRATION
FLIGHT STANDARDS SERVICE
STANDARD TERMINAL ARRIVAL (STAR)

Bearings, headings, courses, tracks and radials are magnetic. Elevations and altitudes are in feet, MSL. Altitudes are minimum altitudes unless otherwise indicated.
Ceilings are in feet above airport elevation. Distances are in nautical miles. Visibilities are in statute miles or feet RVR unless otherwise indicated.

Arrival Name	Number	STAR Computer Code	Superseded Number	Dated	Effective Date
DMSTR (RNAV)	TWO	ETBUY.DMSTR2	ONE	03/24/2022	21 Mar 2024

FIXES AND/OR HOLDING PATTERNS:

CHART HOLDING AT DMSTR: HOLD S, LT, 015.29 INBOUND, 7 NM LEGS, 230 KIAS.

CHART HOLDING AT JURDI: HOLD SW, LT, 045.02 INBOUND, 10 NM LEGS.

COMMUNICATIONS:

CHART: RDU APP CON

AIRPORTS SERVED:

<u>AIRPORT ID</u>	<u>CITY</u>	<u>STATE</u>
KRDU	RALEIGH/DURHAM	NC

LOST COMMUNICATIONS PREFERENCES:**REMARKS:**

THE ENVIRONMENTAL REVIEW UNDER ORDER 1050.1 (LATEST EDITION) AND THE NOISE SCREENING HAVE BEEN ACCOMPLISHED.

ADDITIONAL FLIGHT DATA:

DME/DME ASSESSMENT: SAT (RNP 2.0)

MAG VAR: KRDU 09W/2020

CHART: R-5311 A, B, C.

CHART AT KENCH TERMINUS: KRDU LDG RWY 23L

CHART AT OTTOS TERMINUS: KRDU LDG RWY 5L/R

CHART AT GLEYS TERMINUS: KRDU LDG RWY 23R

FLIGHT INSPECTED BY:

ROBERT E WILLIAMS

ORGANIZATION: **DATE:**

FPO

01/24/2024

Flight Inspected Signature: _____

Digitally signed by
CASIMIR L TABAKA
Jan 26, 2024

DEVELOPED BY:

JOSEPH L. ZEDER

AJV-A432

10/11/2023

Developed By Signature: _____

Digitally signed by
CASIMIR L TABAKA
Nov 13, 2023

APPROVED BY:

CASIMIR TABAKA (MANAGER)

AJV-A432

Approved By Signature: _____

Digitally signed by
CASIMIR L TABAKA
Nov 13, 2023

CHANGES:

1. AMENDED: DMSTR HOLDING PATTERN FROM RIGHT TURNS TO LEFT TURNS.
2. CHANGED NOTE FROM "REDFH TRANSITION, DO NOT FILE - TO BE ASSIGNED BY ATC" TO "REDFH TRANSITION, ATC ASSIGNED ONLY"
3. JURDI MOCA VALUES CHANGED FROM 2000 TO 2500.



FEDERAL AVIATION ADMINISTRATION
FLIGHT STANDARDS SERVICE
STANDARD TERMINAL ARRIVAL (STAR)

Bearings, headings, courses, tracks and radials are magnetic. Elevations and altitudes are in feet, MSL. Altitudes are minimum altitudes unless otherwise indicated.
Ceilings are in feet above airport elevation. Distances are in nautical miles. Visibilities are in statute miles or feet RVR unless otherwise indicated.

Arrival Name	Number	STAR Computer Code	Superseded Number	Dated	Effective Date
DMSTR (RNAV)	TWO	ETBUY.DMSTR2	ONE	03/24/2022	21 Mar 2024

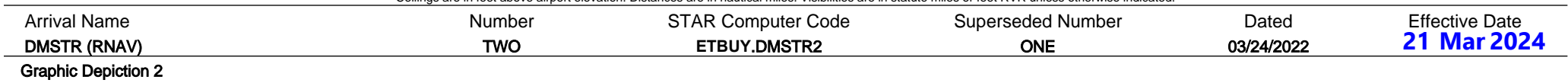
REASONS:

1. ATC REQUEST, RIGHT TURNS IDENTIFIED AS A SAFETY ISSUE.
2. IAW 8260.19J paragraph 4-5-12d(3)(b).
3. NEW AIRSPACE EVALUATION.



Bearings, headings, courses, tracks and radials are magnetic. Elevations and altitudes are in feet, MSL. Altitudes are minimum altitudes unless otherwise indicated. Ceilings are in feet above airport elevation. Distances are in nautical miles. Visibilities are in statute miles or feet RVR unless otherwise indicated.

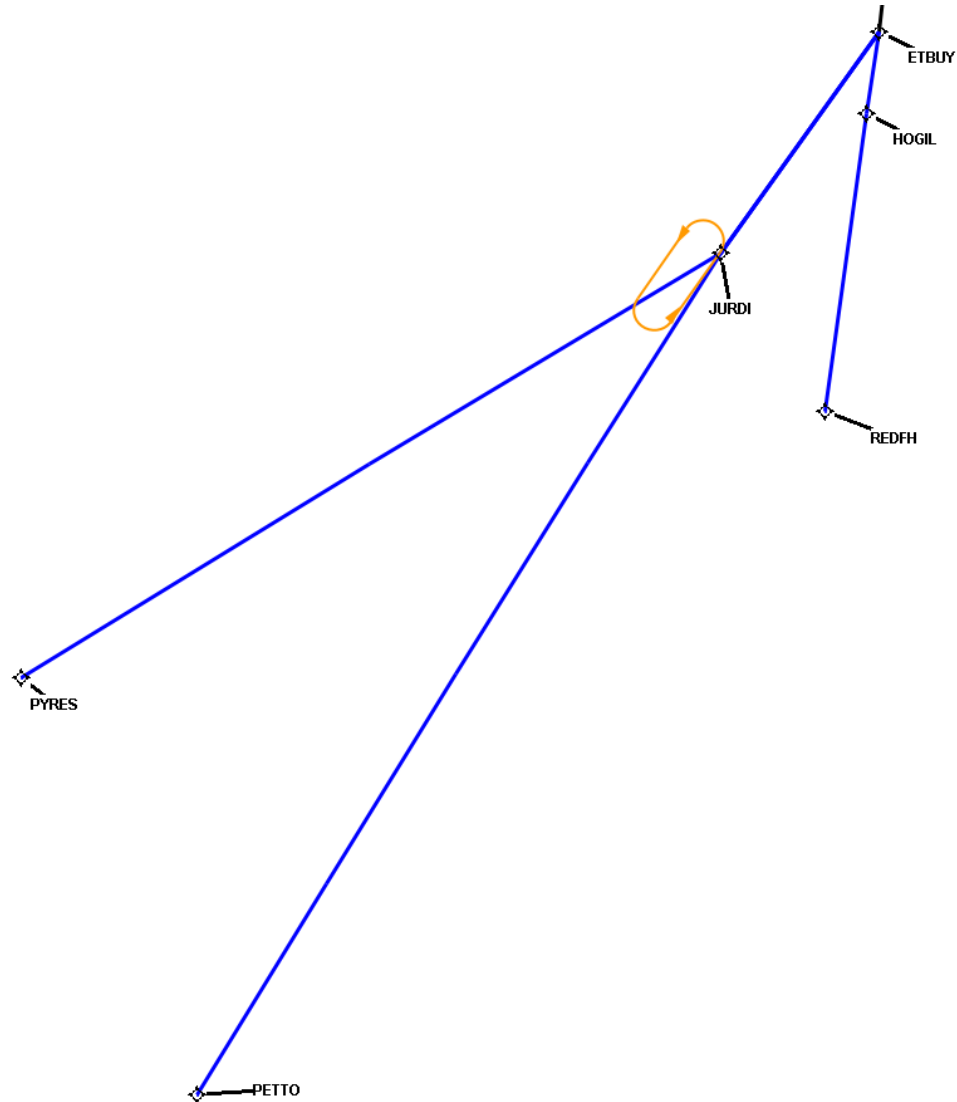
Bearings, headings, courses, tracks and radials are magnetic. Elevations and altitudes are in feet, MSL. Altitudes are minimum altitudes unless otherwise indicated. Ceilings are in feet above airport elevation. Distances are in nautical miles. Visibilities are in statute miles or feet RVR unless otherwise indicated.



FEDERAL AVIATION ADMINISTRATION
FLIGHT STANDARDS SERVICE
STANDARD TERMINAL ARRIVAL (STAR)

Bearings, headings, courses, tracks and radials are magnetic. Elevations and altitudes are in feet, MSL. Altitudes are minimum altitudes unless otherwise indicated.
Ceilings are in feet above airport elevation. Distances are in nautical miles. Visibilities are in statute miles or feet RVR unless otherwise indicated.

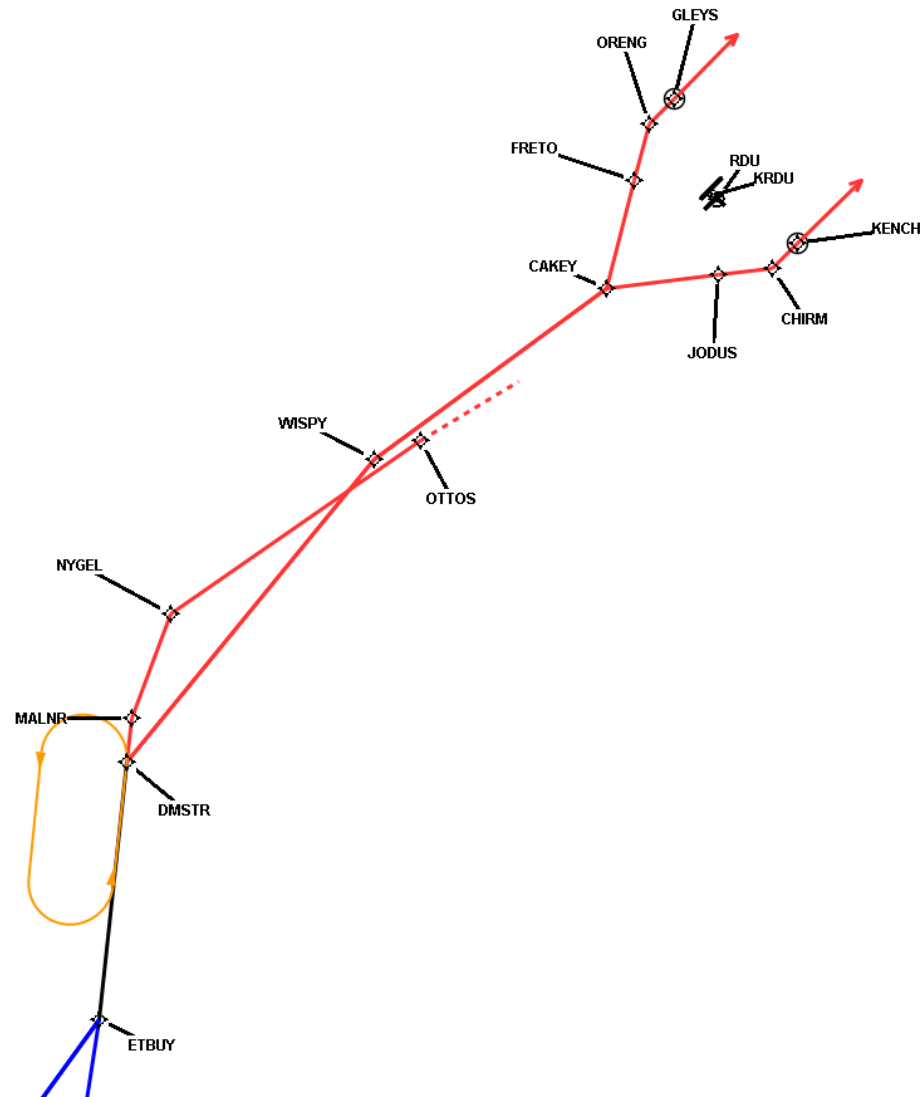
Arrival Name	Number	STAR Computer Code	Superseded Number	Dated	Effective Date
DMSTR (RNAV)	TWO	ETBUY.DMSTR2	ONE	03/24/2022	21 Mar 2024
Graphic Depiction 3					



FEDERAL AVIATION ADMINISTRATION
FLIGHT STANDARDS SERVICE
STANDARD TERMINAL ARRIVAL (STAR)

Bearings, headings, courses, tracks and radials are magnetic. Elevations and altitudes are in feet, MSL. Altitudes are minimum altitudes unless otherwise indicated.
Ceilings are in feet above airport elevation. Distances are in nautical miles. Visibilities are in statute miles or feet RVR unless otherwise indicated.

Arrival Name	Number	STAR Computer Code	Superseded Number	Dated	Effective Date
DMSTR (RNAV)	TWO	ETBUY.DMSTR2	ONE	03/24/2022	21 Mar 2024
Graphic Depiction 4					



FEDERAL AVIATION ADMINISTRATION
FLIGHT STANDARDS SERVICE
STAR (DATA RECORD)

Arrival Name DMSTR (RNAV)		Number TWO		STAR Computer Code ETBUY.DMSTR2			Superseded Number ONE			Dated 03/24/2022	Effective Date 21 Mar 2024
FIX/NAVAID	LAT/LONG	C	FO/FB	LEG TYPE	TC	DIST (NM)	ALTITUDE	SPEED	REMARKS		
En Route Transition											
JURDI	344102.92N / 0795214.38W	Y		IF			AT FL210	AT 280K	JURDI.DMSTR2		
ETBUY	350648.43N / 0792925.22W	Y	FB	TF	036.02	31.84					
En Route Transition											
PETTO	330308.02N / 0810722.47W	Y		IF					PETTO.DMSTR2		
JURDI	344102.92N / 0795214.38W	Y	FB	TF	032.28	116.04	AT FL210	AT 280K			
ETBUY	350648.43N / 0792925.22W	Y	FB	TF	036.02	31.84					
En Route Transition											
PYRES	335143.85N / 0813240.96W	Y		IF					PYRES.DMSTR2		
JURDI	344102.92N / 0795214.38W	Y	FB	TF	058.93	96.71	AT FL210	AT 280K			
ETBUY	350648.43N / 0792925.22W	Y	FB	TF	036.02	31.84					
En Route Transition											
REDFH	342236.35N / 0793708.34W	Y		IF					REDFH.DMSTR2		
HOGIL	345719.40N / 0793113.93W	Y	FB	TF	007.97	35.00					
ETBUY	350648.43N / 0792925.22W	Y	FB	TF	008.92	09.58					
Common Route											
ETBUY	350648.43N / 0792925.22W	Y		IF					ETBUY.DMSTR2		
DMSTR	352107.21N / 0792729.67W	Y	FB	TF	006.29	14.38					
Runway Transition											
DMSTR	352107.21N / 0792729.67W	Y		IF							
MALNR	352335.22N / 0792709.67W	Y	FB	TF	006.31	02.48	AT/ABOVE 11000	AT 250K			
NYGEL	352922.63N / 0792429.28W	Y	FB	TF	020.68	06.18	9000B10000				
OTTOS	353900.81N / 0790719.59W	Y	FB	TF	055.42	16.99	AT 6000	AT 210K			
KRDU:RWY 5L/R											

FEDERAL AVIATION ADMINISTRATION
FLIGHT STANDARDS SERVICE
STAR (DATA RECORD)

Arrival Name DMSTR (RNAV)		Number TWO		STAR Computer Code ETBUY.DMSTR2			Superseded Number ONE		Dated 03/24/2022	Effective Date 21 Mar 2024
FIX/NAVAID	LAT/LONG	C	FO/FB	LEG TYPE	TC	DIST (NM)	ALTITUDE	SPEED	REMARKS	
Runway Transition										
DMSTR	352107.21N / 0792729.67W	Y		IF						
WISPY	353756.34N / 0791030.99W	Y	FB	TF	039.46	21.78	11000B12000	AT 280K		
CAKEY	354727.38N / 0785434.34W	Y	FB	TF	053.72	16.09	AT 8000			
JODUS	354812.67N / 0784651.37W	Y	FB	TF	083.12	06.32	AT/ABOVE 7000	AT 220K		
CHIRM	354833.98N / 0784311.62W	Y	FB	TF	083.19	03.00				
KENCH	354958.79N / 0784127.08W	Y	FO	TF	045.10	02.00	AT 6000	AT 210K		
KRDU:RWY 23L				FM	045.10					
Runway Transition										
DMSTR	352107.21N / 0792729.67W	Y		IF						
WISPY	353756.34N / 0791030.99W	Y	FB	TF	039.46	21.78	11000B12000	AT 280K		
CAKEY	354727.38N / 0785434.34W	Y	FB	TF	053.72	16.09	AT 8000			
FRETO	355329.07N / 0785240.61W	Y	FB	TF	014.35	06.21	AT/ABOVE 7000	AT 220K		
ORENG	355638.80N / 0785140.83W	Y	FB	TF	014.37	03.26				
GLEYS	355803.61N / 0784956.11W	Y	FO	TF	045.10	02.00	AT 6000	AT 210K		
KRDU:RWY 23R				FM	045.10					