

LOC I-CTJ  
**111.7**

APP CRS  
**348°**

Rwy ldg  
TDZE **1140**  
Apt Elev **1161**

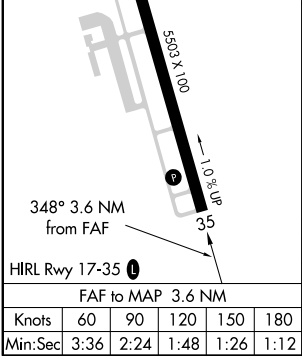
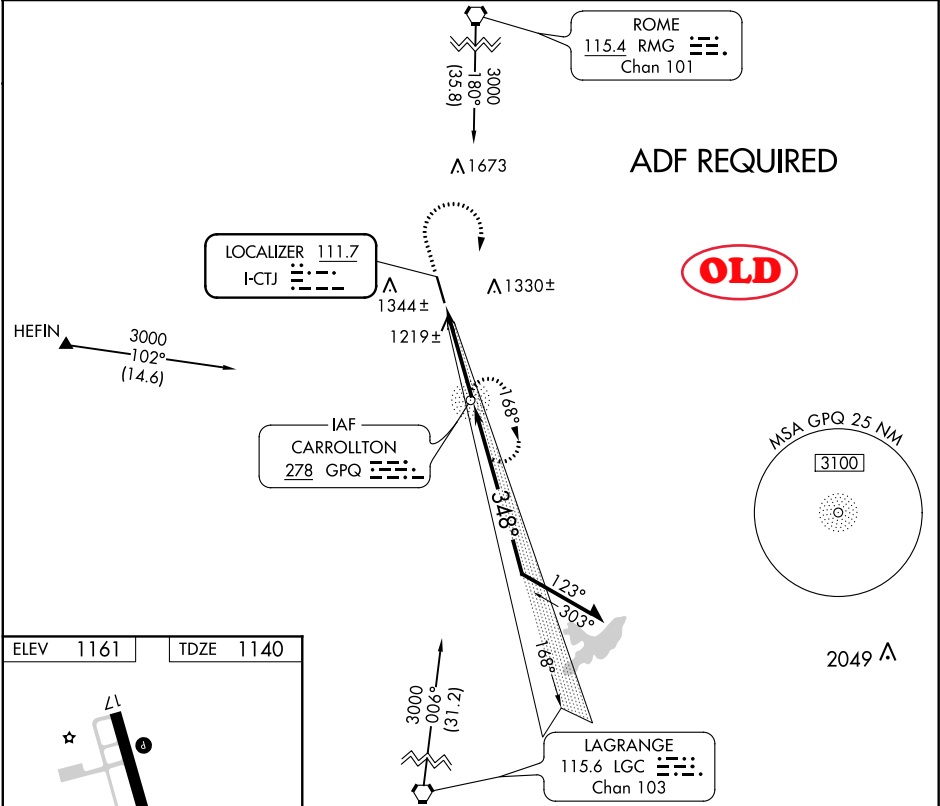
ILS or LOC RWY 35


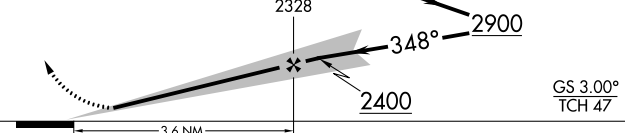
WEST GEORGIA RGNL-O V GRAY FIELD (CTJ)

When local altimeter setting not received, use Newnan Coweta County altimeter setting and increase DA to 1430 feet and all Cats visibility ¼ mile; increase all MDA 100 feet and S-LOC 35 Cat C and Circling Cat C visibility ¼ mile and S-LOC 35 Cat D visibility ½ mile. ADF Required.

MISSED APPROACH: Climb to 1800 then climbing right turn to 3000 direct GPQ NDB and hold.

AWOS-3 <b>118.175</b>	ATLANTA APP CON <b>121.0 268.7</b>	CLNC DEL <b>121.6</b>	UNICOM <b>122.975 (CTAF) 0</b>
--------------------------	---------------------------------------	--------------------------	-----------------------------------



1800 ↑	3000 ↗	GPQ 	GPQ NDB VGSI and ILS glidepath not coincident (VGSI Angle 3.00/TCH 54). Remain within 10 NM			
						
CATEGORY	A	B	C	D		
S-ILS 35	1340- <sup>3</sup> / <sub>4</sub>		200 (200- <sup>3</sup> / <sub>4</sub> )			
S-LOC 35	1480-1		340 (400-1)			
CIRCLING	1660-1 499 (500-1)	1680-1 519 (600-1)	1680-1 <sup>1</sup> / <sub>2</sub> 519 (600-1 <sup>1</sup> / <sub>2</sub> )	1720-2 559 (600-2)		



