

WAAS CH <b>77815</b> <b>W11A</b>	APP CRS <b>103°</b>	Rwy Idg TDZE Apt Elev	<b>5500</b> <b>107</b> <b>107</b>
--	------------------------	-----------------------------	---

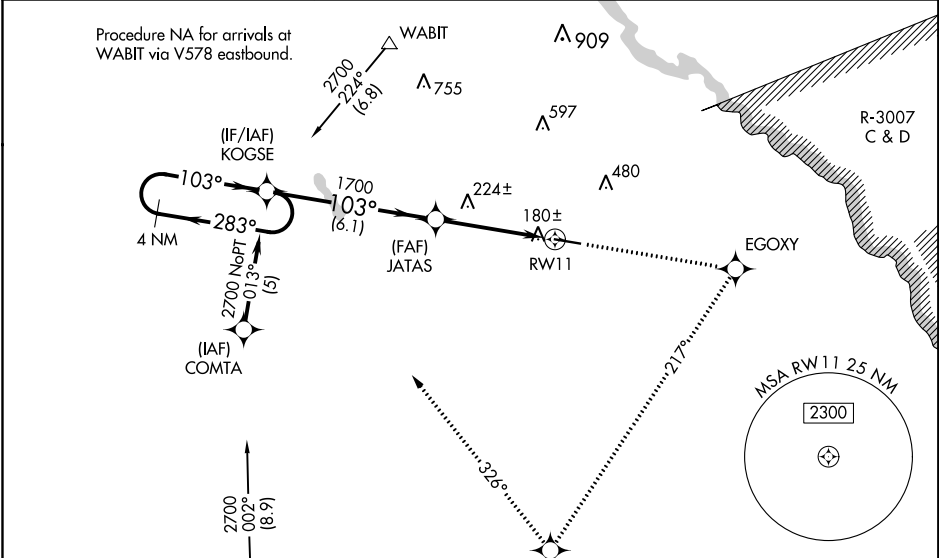
RNAV (GPS) RWY 11  
JESUP-WAYNE COUNTY (JES)

**NA**

Baro-VNAV NA when using Savannah/Hilton Head Intl altimeter setting. For uncompensated Baro-VNAV systems, LNAV/VNAV NA below -15°C (5°F) or above 54°C (130°F). DME/DME RNP-0.3 NA. Helicopter visibility reduction below 1 statute mile NA. When local altimeter setting not received, use Savannah/Hilton Head Intl altimeter setting and increase LPV DA to 583, LNAV/VNAV DA to 597, and all MDA 140 feet; increase LPV all Cats and LNAV Cat C visibility ½ mile and LNAV/VNAV all Cats visibility ¼ mile. VDP NA when using Savannah/Hilton Head Intl altimeter setting.

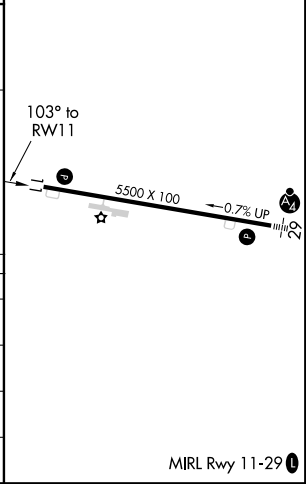
**MISSED APPROACH:** Climb to 2700 direct EGOXY and right turn via track 217° to FEJYY and right turn via track 326° to KOGSE and hold.

AWOS-3PT <b>118.125</b>	JACKSONVILLE CENTER <b>126.75 277.4</b>	UNICOM <b>122.8 (CTAF) 0</b>
----------------------------	--	---------------------------------



ELEV 107	TDZE 107
----------	----------

VGSI and RNAV glidepath not coincident (VGSI Angle 3.75/TCH 47).		2700	EGOXY	FEJYY	KOGSE
4 NM Holding Pattern		↑	tr 217°	tr 326°	
KOGSE		*LNAV only.			
2700 ← 283° → 103° → 103° → 1700		*0.8 NM to RWY 11			
GP 3.30° TCH 60		RWY 11			
		6.1 NM	3.5 NM	0.8 NM	
CATEGORY	A	B	C	D	
LPV DA	462-1	355 (400-1)		NA	
LNAV/VNAV DA	476-1¼	369 (400-1¼)		NA	
LNAV MDA	480-1	373 (400-1)		NA	
CIRCLING	500-1 393 (400-1)	560-1 453 (500-1)	560-1½ 453 (500-1½)	NA	





KJES  
JESUP-WAYNE COUNTY  
JESUP, GA  
RNAV GPS RWY 11 ORIG A  
CIRC 100K

