


SALINA, KANSAS

AL-362 (FAA)

19339

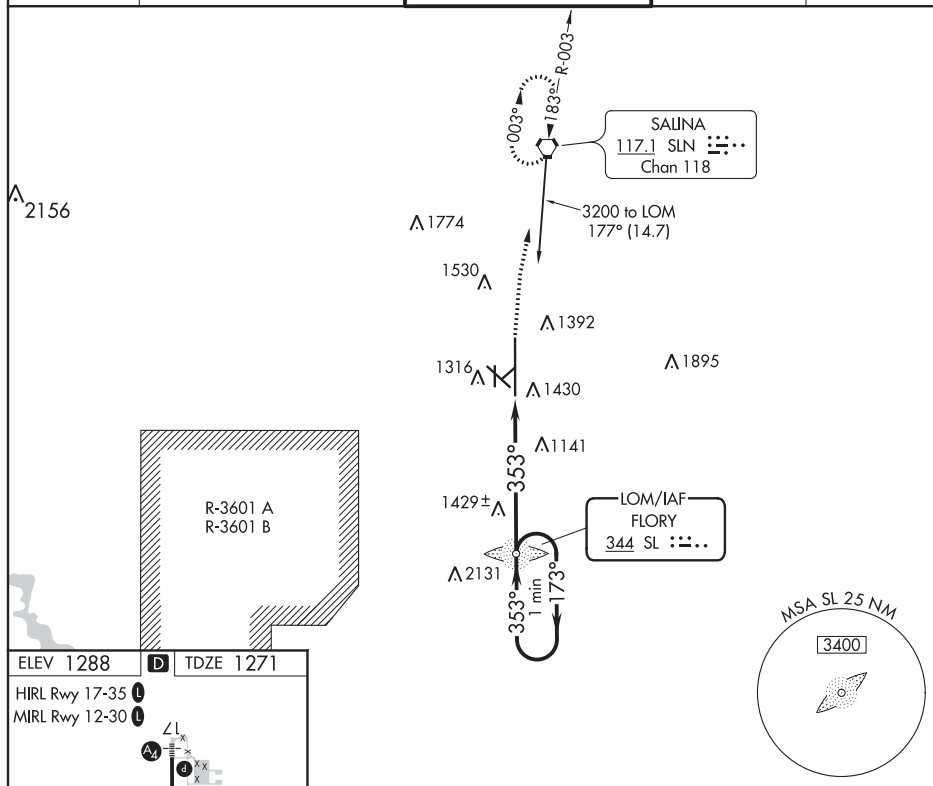
LOM SL	APP CRS	Rwy Idg	12300
344	353°	TDZE	1271
		Apt Elev	1288

OLD**NDB RWY 35**
SALINA RGNL (SLN)

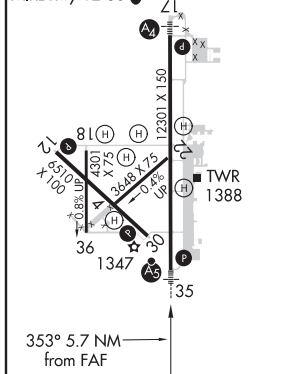
<p>⚠ Cat D Circling NA southwest of runway 12-30. For inop ALS, increase S-35 Cats A/B visibility to 1 SM and Cats C/D to 1½ SM.</p>	<p>MALSR</p> 	<p>MISSED APPROACH: Climb to 3000 direct SLN VORTAC and hold.</p>
---	--	---

ATIS	KANSAS CITY CENTER	SALINA TOWER ★	GND CON	UNICOM
120.15	134.9 363.2	119.3 (CTAF) 0 257.7	121.9 397.9	122.95

NC-2, 08 OCT 2020 to 05 NOV 2020



NC-2, 08 OCT 2020 to 05 NOV 2020

ELEV 1288 **D** TDZE 1271HIRL Rwy 17-35 **I**
MIRL Rwy 12-30 **I**

FAF to MAP 5.7 NM

Knots	60	90	120	150	180
Min:Sec	5:42	3:48	2:51	2:17	1:54

SALINA, KANSAS
Amdt 17B 11OCT18

38°47'N-97°39'W

SALINA RGNL (SLN)
NDB RWY 35

3000	SLN	VGSI and descent angles not coincident (VGSI Angle 3.00/TCH 48).		One Minute Holding Pattern	
		SL	LOM	173°	3200
				353°	
				3.10°	TCH 56
				5.7 NM	
CATEGORY	A	B	C	D	
S-35	1760-¾	489 (500-¾)	1760-1 489 (500-1)	1760-1¼ 489 (500-1¼)	
CIRCLING	1820-1	532 (600-1)	1840-1½ 552 (600-1½)	1840-2 552 (600-2)	

KSLN
SALINA RGNL
SALINA
KS
NEW CIRCLING CRITERIA
1:100,000
RADII: 1.31, 1.85, 2.91, 3.81

Circling CAT A TREE (1509)
CAT A TREE