

OLD

PALM SPRINGS, CALIFORNIA

AL-5848 (FAA)

19283

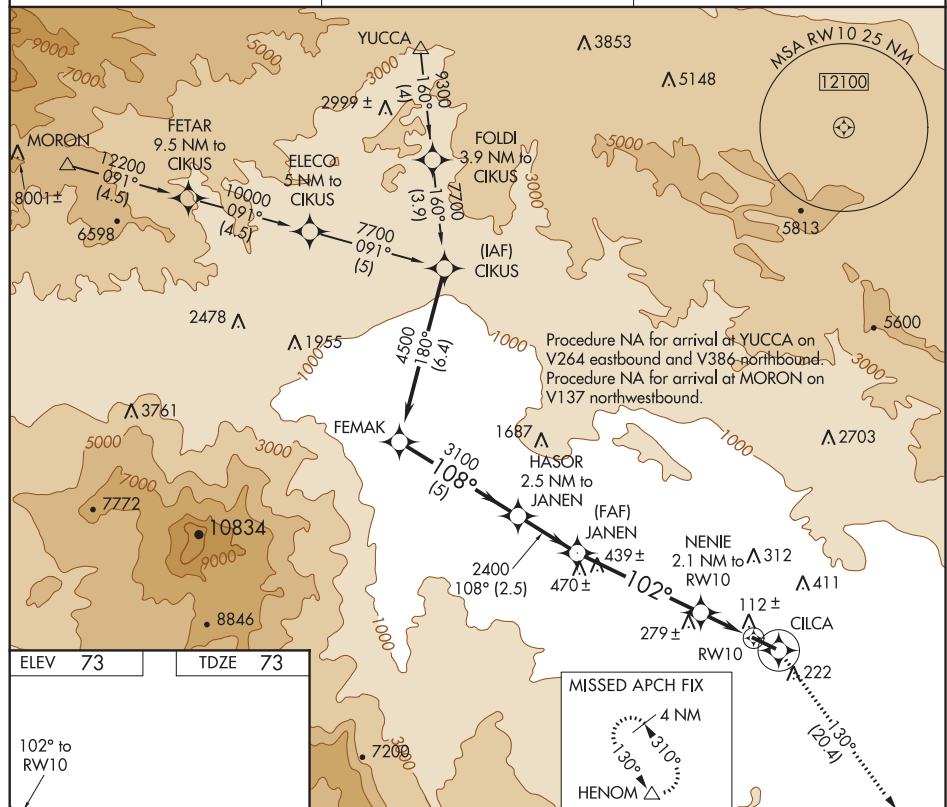
APP CRS	Rwy Idg	5002
102°	TDZE	73
	Apt Elev	73

# RNAV (GPS) RWY 10

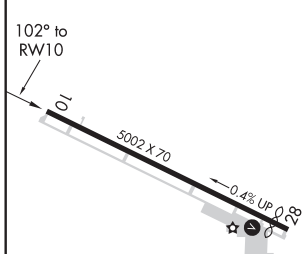
BERMUDA DUNES (UDD)

<p>GPS or RNP-0.3 required. DME/DME RNP-0.3 NA. Use Jacqueline Cochran Rgnl altimeter setting.</p>	<p>MISSED APPROACH: Climb to 3700 direct CILCA and via 130° track to HENOM and hold.</p>
--	--

TRM ASOS 118.325	SOCAL APP CON ★ 135.275 251.1	UNICOM 122.8 (CTAF) 0
---------------------	----------------------------------	--------------------------



ELEV 73	TDZE 73
---------	---------



REIL Rwy 28  
LRL Rwy 10-28 0

PALM SPRINGS, CALIFORNIA  
Orig-B 25NOV04

33°45'N-116°16'W

# RNAV (GPS) RWY 10

FEMAK	HASOR 2.5 NM to JANEN	JANEN	NENIE 2.1 NM to RW10	CILCA	HENOM
4500	3100	2400	800	3700	130° tr
Procedure Turn NA	108°	3.08° TCH 40	102°		
	5 NM	2.5 NM	4.9 NM	2.1 NM	
CATEGORY	A	B	C	D	
LNAV MDA	480-1	407 (500-1)	480-1¼ 407 (500-1¼)	NA	
CIRCLING	700-1	627 (700-1)	700-1¾ 627 (700-1¾)	NA	

SW-3, 10 SEP 2020 to 08 OCT 2020

SW-3, 10 SEP 2020 to 08 OCT 2020

