

TUNICA, MISSISSIPPI

AL-9521 (FAA)

20254

WAAS CH 60912 W35A	APP CRS 347°	Rwy Idg TDZE Apt Elev	8500 194 194
--	------------------------	-----------------------------	---

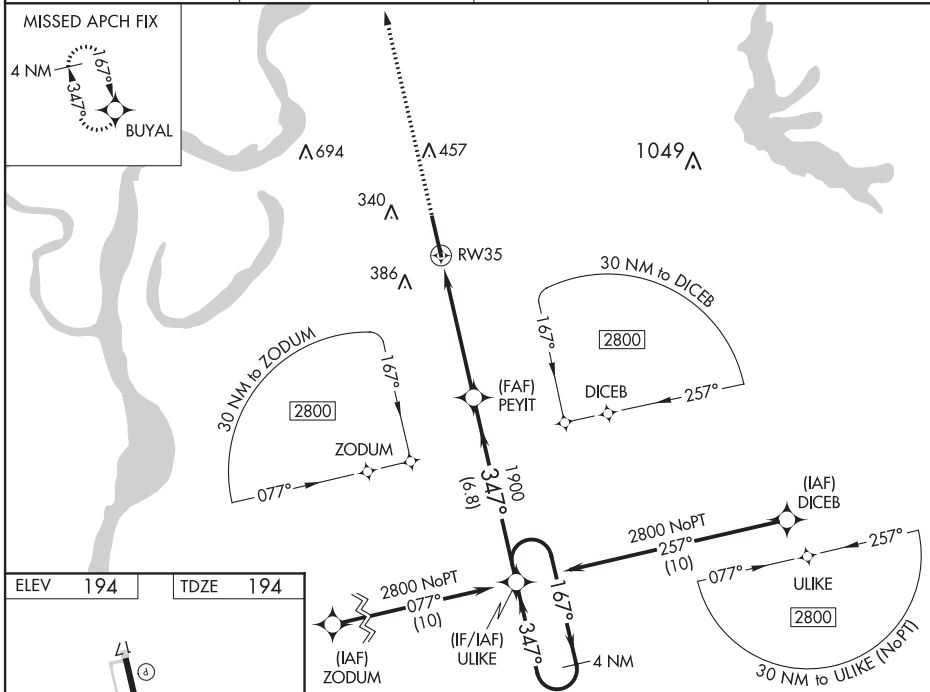
RNAV (GPS) RWY 35 TUNICA MUNI (UTA)

For uncompensated Baro-VNAV systems, LNAV/VNAV NA below -1.5°C (5°F) or above 42°C (107°F). For inop MALSR, increase LNAV/VNAV all Cats visibility to ¾ mile. DME/DME RNP-0.3 NA. Baro-VNAV and VDP NA when using Memphis altimeter setting. When local altimeter setting not received, use Memphis altimeter setting and increase LPV DA to 480, LNAV/VNAV DA to 530, and all MDA 100 feet; increase LNAV/VNAV visibility all Cats ½ mile, increase LNAV Cat C, D and Circling Cat C visibility ¼ mile. For inop MALSR when using Memphis altimeter setting, increase LPV all Cats visibility to ¾ mile.

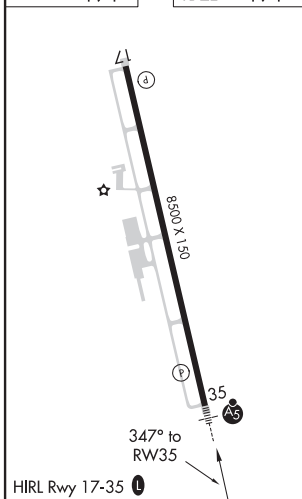


MISSED APPROACH:
Climb to 2800 direct
BUYAL and hold.

AWOS-3 118.075	MEMPHIS APP CON 119.1 291.6	CLNC DEL 118.9	UNICOM 123.0 (CTAF) 0
--------------------------	---------------------------------------	--------------------------	---------------------------------



ELEV **194** TDZE **194**



2800	BUYAL	VGSI and RNAV glidepath not coincident (VGSI Angle 3.00/TCH 47).	ULIKE	4 NM Holding Pattern
*LNAV only.	*1.3 NM to RW35	PEYIT	1900	347°
RW35	1.3 NM	4 NM	6.8 NM	GP 3.00° TCH 43
CATEGORY	A	B	C	D
LPV DA	394-½	200 (200-½)		
LNAV/VNAV DA	444-½	250 (300-½)		
LNAV MDA	640-½	446 (500-½)	640-¾	446 (500-¾)
CIRCLING	680-1	486 (500-1)	700-1½	760-2
			506 (600-1½)	566 (600-2)

TUNICA, MISSISSIPPI
Amdt 2A 26JUN14

34°41'N-90°21'W

TUNICA MUNI (UTA) **RNAV (GPS) RWY 35**

SC-4, 10 SEP 2020 to 08 OCT 2020

SC-4, 10 SEP 2020 to 08 OCT 2020