

OLD

FORT MYERS, FLORIDA

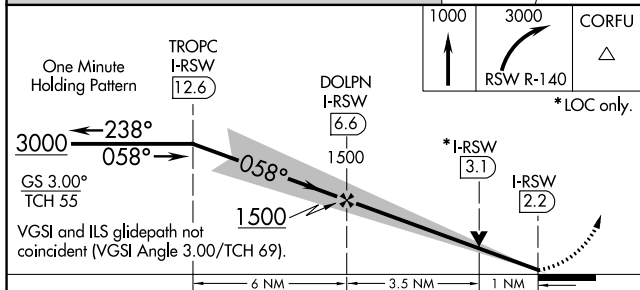
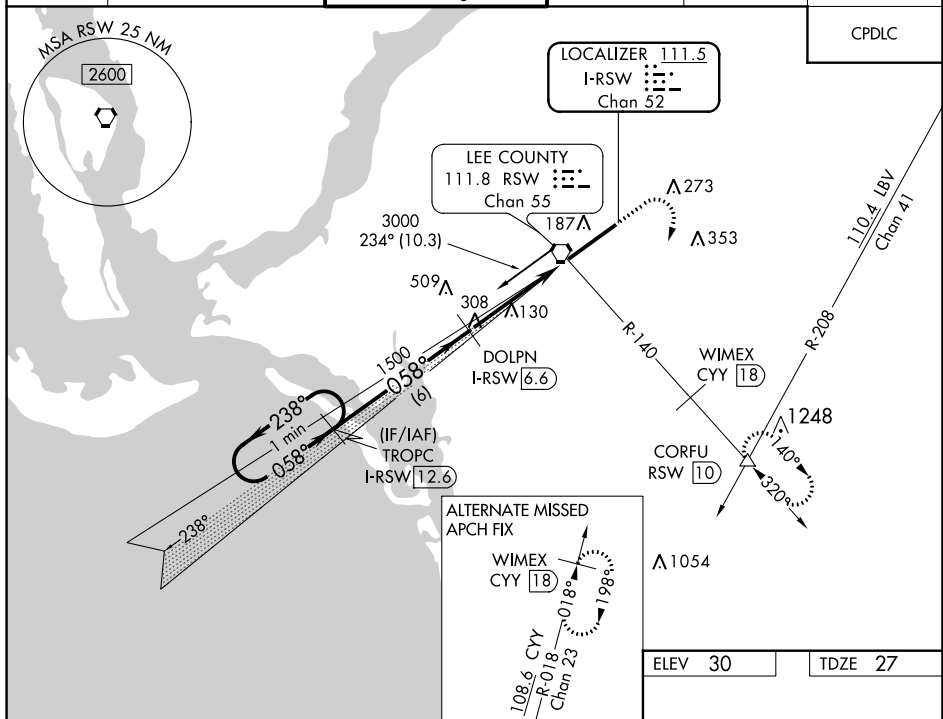
20254

LOC/DME I-RSW 111.5 Chan 52	APP CRS 058°	Rwy Idg 12000 TDZE 27 Apt Elev 30
---	------------------------	--

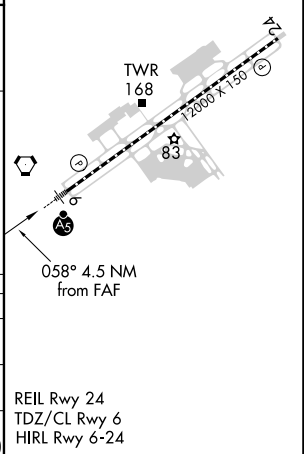
ILS or LOC/DME RWY 6
SOUTHWEST FLORIDA INTL (RSW)

T A For inap MALS, increase S-ILS 6 Cat E visibility to RVR 4000 and S-LOC 6 Cat E visibility to RVR 6000.	MALS 	MISSED APPROACH: Climb to 1000 then climbing right turn to 3000 on RSW VORTAC R-140 to CORFU INT/RSW 10 DME and hold.
--	----------	---

D-ATIS 124.65	FORT MYERS APP CON ★ 126.8 306.2	FORT MYERS TOWER ★ 128.75(CTAF) 0 257.8	GND CON 121.9 257.8	CLNC DEL 132.075	UNICOM 122.95
-------------------------	--	---	-------------------------------	----------------------------	-------------------------



CATEGORY	A	B	C	D	E
S-ILS 6	227/18 200 (200-1/2)				
S-LOC 6	380/24 353 (400-1/2)		380/30 353 (400-3/4)		
CIRCLING	500-1	470 (500-1)	500-1 1/2 470 (500-1 1/2)	580-2 550 (600-2)	660-2 1/4 630 (700-2 1/4)



FORT MYERS, FLORIDA
Amdt 7A 28MAY15

26°32'N-81°45'W

SOUTHWEST FLORIDA INTL (RSW)
ILS or LOC/DME RWY 6

SE-3, 08 OCT 2020 to 05 NOV 2020

KRSW
SOUTHWEST FLORIDA
INTL
FORT MEYERS, FL
ILS or LOC/DME RWY 6
100K CIRCLING

Circling CAT A/B
POLE (187)
12-025475

Circling CAT C
TOWER (279)
12-002978

Circling CAT D
TOWER (353)
12-001671

Circling CAT E
TOWER (510)
12-001861

