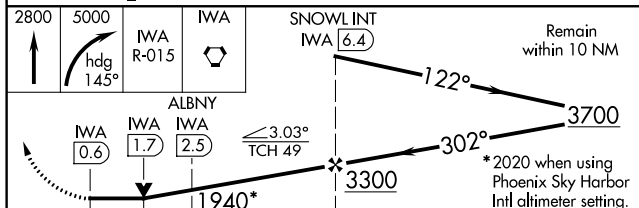


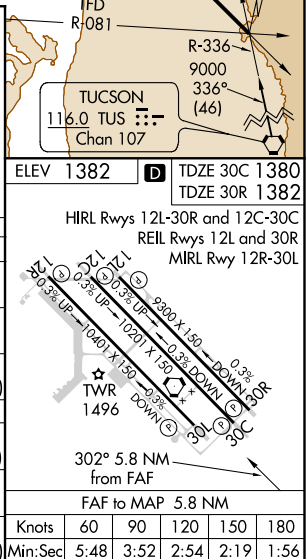
VOR or TACAN RWY 30C  
PHOENIX-MESA GATEWAY (IWA)

**MISSED APPROACH:** Climb to 2800 then climbing right turn to 5000 via heading 145° and IWA VORTAC R-015 to IWA VORTAC and hold, continue climb-in-hold to 5000 (TACAN aircraft continue via IWA VORTAC R-122 to HALLB INT/IWA 9.9 DME and hold, continue climb-in-hold to 5000, hold SE, LT, 302° inbound).

## RADAR REQUIRED



CATEGORY		A	B	C	D	E
S-30C	1940-1	560 (600-1)	1940-1½ 560 (600-1½)	1940-1¾ 560 (600-1¾)	1940-2	560 (600-2)
SIDESTEP 30R	1940-1	558 (600-1)	1940-1½ 558 (600-1½)	1940-2	558 (600-2)	
CIRCLING	1940-1	558 (600-1)	1940-1½ 558 (600-1½)	1940-2 558 (600-2)	2020-2¼ 638 (700-2¼)	
DME MINIMUMS						
S-30C	1800-1	420 (500-1)	1800-1¼ 420 (500-1¼)	1800-1½ 420 (500-1½)		
SIDESTEP 30R	1800-1	418 (500-1)	1800-1½ 418 (500-1½)	1800-2	418 (500-2)	
CIRCLING	1880-1	498 (500-1)	1880-1½ 498 (500-1½)	1940-2 558 (600-2)	2020-2¼ 638 (700-2¼)	



SW-4, 08 OCT 2020 to 05 NOV 2020

KIWA  
 PHOENIX-MESA GATEWAY  
 PHOENIX, AZ  
 100K CIRCLING  
 ALL PROCEDURES

