

BALTIMORE, MARYLAND

AL-5222 (FAA)

20086

WAAS CH 45622 W15A	APP CRS 146°	Rwy Idg TDZE Apt Elev 6997 22 22
--	------------------------	--

OLD
RNAV (GPS) RWY 15
 MARTIN STATE (MTN)

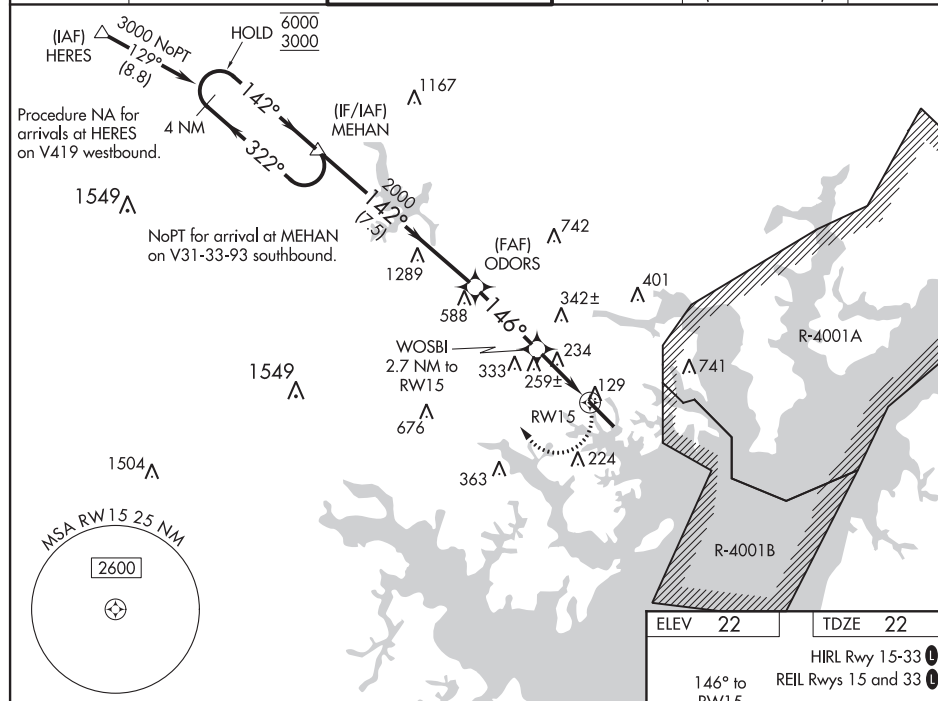
RNP APCH.

▼ Rwy 15 helicopter visibility reduction below $\frac{3}{4}$ SM NA. When local altimeter setting not received, use Baltimore/Washington Intl Thurgood Marshall altimeter setting and increase all MDA 60 feet and increase LP Cats C and D visibility $\frac{1}{8}$ SM, LNAV Cats C and D visibility $\frac{1}{4}$ SM, Circling Cat D visibility $\frac{1}{4}$ SM.

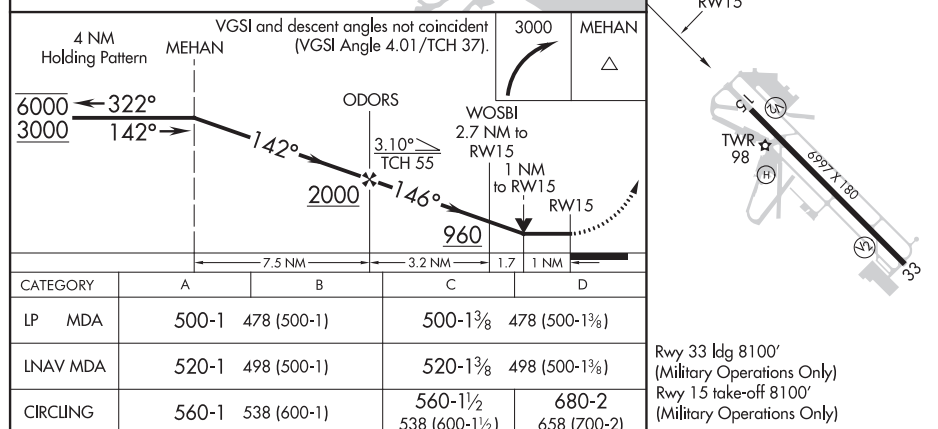
MISSED APPROACH:
Climbing right turn to
3000 direct MEHAN
and hold.

ATIS 124.925	POTOMAC APP CON 119.0 282.275	MARTIN TOWER ★ 121.3(CTAF) 0 254.425	GND CON 121.8 253.4	CLNC DEL 121.8 (when twr closed)	UNICOM 122.95
------------------------	---	--	-------------------------------	---	-------------------------

NE-3, 10 SEP 2020 to 08 OCT 2020



NE-3, 10 SEP 2020 to 08 OCT 2020


 BALTIMORE, MARYLAND
 Amdt 1B 20JUN19

39°20'N-76°25'W

 MARTIN STATE (MTN)
RNAV (GPS) RWY 15

KMTN
MARTIN STATE
BALTIMORE
MD
NEW CIRCLING AREA
1:100,000

