

VOR/DME EVM	APP CRS	Rwy ldg	4000
<b>108.2</b>	<b>268°</b>	TDZE	<b>1372</b>
Chan <b>19</b>		Apt Elev	<b>1376</b>

VOR RWY 27

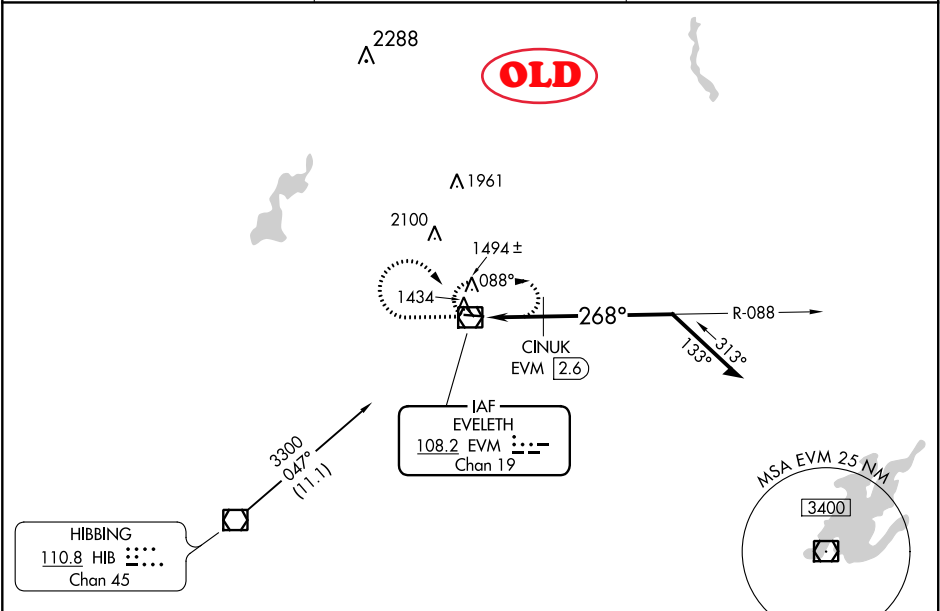
EVELETH-VIRGINIA MUNI (EVM)

NA

When local altimeter setting not received, use Hibbing altimeter setting and increase all MDA 40 feet; increase S-27 and Circling Cat B/C/D visibility ½ mile. Increase CINUK FIX minimums S-27 and Circling Cat C/D visibility ¼ mile. Rwy 27 helicopter visibility reduction below ¾ SM NA. Circling to Rwy's 14 and 32 NA.

MISSED APPROACH: Climb to 3300 then right turn direct EVM VOR/DME and hold.

AWOS-3 <b>108.2</b>	DULUTH APP CON <b>125,45 233.7</b>	UNICOM <b>122.7 (CTAF)</b>
------------------------	---------------------------------------	-------------------------------



ELEV <b>1376</b>	TDZE <b>1372</b>
------------------	------------------

3300

EVM

\*2140 when using Hibbing altimeter setting.

088°

CINUK EVM 2.6

3300

268°

2100\*

2.6 NM

Remain within 10 NM

2020 X 100

0.3%

UP

4000 X 75

27

268° to VOR/DME

REIL Rwy 27

MIRL Rwy's 9-27 and 14-32

CATEGORY	A	B	C	D
S-27	2100-1 728 (800-1)		2100-2 728 (800-2)	
CIRCLING	2100-1 724 (800-1)		2100-2 724 (800-2)	2100-2½ 724 (800-2½)
CINUK FIX MINIMUMS (DME REQUIRED)				
S-27	1760-1 388 (400-1)		1760-1¼ 388 (400-1¼)	
CIRCLING	1880-1 504 (600-1)	1940-1 564 (600-1)	1940-1½ 564 (600-1½)	2040-2 664 (700-2)



