

FEDERAL AVIATION ADMINISTRATION  
FLIGHT STANDARDS SERVICE  
STANDARD TERMINAL ARRIVAL (STAR)

Bearings, headings, courses, tracks and radials are magnetic. Elevations and altitudes are in feet, MSL. Altitudes are minimum altitudes unless otherwise indicated.  
Distances are in nautical miles (NM). Graphic depictions attached.

Arrival Name	Number	STAR Computer Code	Superseded Number	Dated	Effective Date
<b>TIMMO (RNAV)</b>	<b>ONE</b>	<b>HILRS.TIMMO1</b>	<b>NONE</b>		<b>27JAN2022</b>

TRANSITION ROUTES:

Transition Name	Transition Computer Codes	From FIX/NAVAID	To FIX/NAVAID	Course	Distance	MEA	MOCA	MAA	Crossing Altitudes / Fixes
HTHWY	HTHWY.TIMMO1	HTHWY	HTHWY						
			HILRS	004.68	19.69	11000	2900		AT/ABOVE 11000

ARRIVAL ROUTE DESCRIPTION:

KOMA: FROM HILRS ON TRACK 003.36/7.87 TO TIMMO, THEN ON TRACK 004.33/14.66 TO MOONR.

LANDING KOMA RWY 14L/R, 18: FROM MOONR ON TRACK 004.51/22.22 TO CROSS CRPET AT 5000 AND AT 210 KIAS, THEN ON HEADING 340.00 OR AS ASSIGNED BY ATC. EXPECT RADAR VECTORS TO FINAL APPROACH COURSE.

LANDING KOMA RWY 36, 32L/R: FROM MOONR ON TRACK 031.89/17.01 TO CROSS BAARK AT 4000, THEN ON TRACK 030.00. EXPECT RADAR VECTORS TO FINAL APPROACH COURSE.

LANDING KOFF: FROM HILRS ON TRACK 003.98/22.53 TO MOONR, THEN ON TRACK 042.00/5.00 TO CROSS GRNTT AT 6000, THEN ON TRACK 040.00. EXPECT RADAR VECTORS TO FINAL APPROACH COURSE.

PBN REQUIREMENT NOTES

RNAV 1 - DME/DME/IRU OR GPS

EQUIPMENT REQUIREMENT NOTES

RADAR REQUIRED

PROCEDURAL DATA NOTES:

NOTE: FOR NON-GPS EQUIPPED AIRCRAFT, LNK DME MUST BE OPERATIONAL

FIXES AND/OR HOLDING PATTERNS:

CHART HOLDING AT HILRS: HOLD S, RT, 004.68 INBOUND, 10 NM LEGS.

COMMUNICATIONS:

CHART: OMA APP CON

AIRPORTS SERVED:

EPPLEY AIRFIELD, OMAHA, NE (KOMA)

OFFUTT AFB, OMAHA, NE (KOFF)

LOST COMMUNICATIONS PROCEDURE:

REMARKS:

STAR ARRIVAL DOES NOT CONNECT TO ANY SPECIFIC IAP.



FEDERAL AVIATION ADMINISTRATION  
FLIGHT STANDARDS SERVICE  
STANDARD TERMINAL ARRIVAL (STAR)

Bearings, headings, courses, tracks and radials are magnetic. Elevations and altitudes are in feet, MSL. Altitudes are minimum altitudes unless otherwise indicated.  
Distances are in nautical miles (NM). Graphic depictions attached.

Arrival Name	Number	STAR Computer Code	Superseded Number	Dated	Effective Date
<b>TIMMO (RNAV)</b>	<b>ONE</b>	<b>HILRS.TIMMO1</b>	<b>NONE</b>		<b>27JAN2022</b>

ADDITIONAL FLIGHT DATA:

DME/DME ASSESSMENT: SAT (RNP 2.0)  
REFERENCE MAGNETIC VARIATION = KOMA 02E/2020  
CHART AT CRPET TERMINUS: KOMA LDG RWY 14L/R, RWY 18  
CHART AT BAARK TERMINUS: KOMA LDG RWY 32L/R, RWY 36  
CHART AT GRNTT TERMINUS: LDG KOFF

FLIGHT INSPECTED BY:

MICHAEL A GREENWOOD  
Name

FPO  
Organization

11/18/2021  
Date

*Digitally signed by*  
**DONALD H LANIER**

Nov 29, 2021      Signature

DEVELOPED BY:

JAY GAUMER  
Name

KANSAS CITY ARTCC  
Organization

06/29/2021  
Date

*Digitally signed by*  
**DONALD H LANIER**

Nov 29, 2021      Signature

APPROVED BY:

LONNIE EVERHART, MANAGER  
Name

AJV-A430  
Organization

Date

*Digitally signed by*  
**DONALD H LANIER**

Nov 29, 2021      Signature

CHANGES:

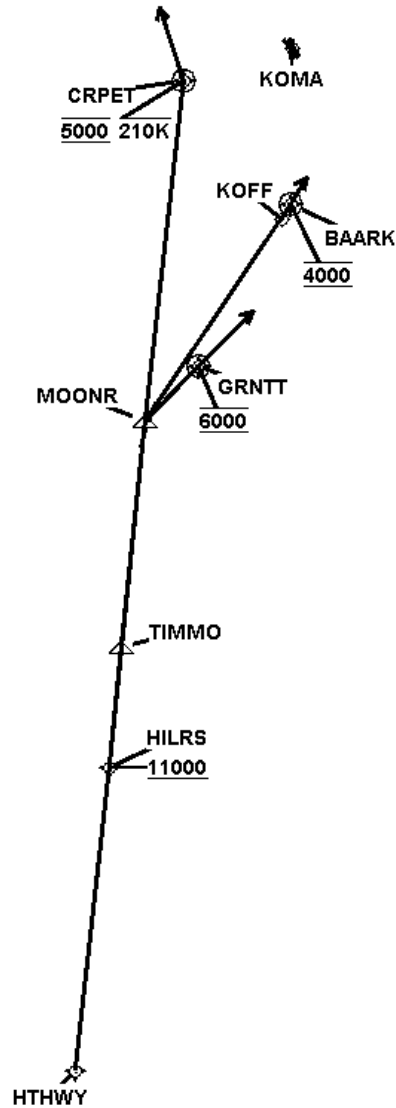
- 10/29/21: THIS IS AN UPDATED COPY OF THE FORM DEVELOPED ON 06/29/21.  
1. CHANGED DISTANCE IN TRANSITION ROUTES FROM HTHWY TO HILRS FROM 19.70 TO 19.69.

REASONS:

FEDERAL AVIATION ADMINISTRATION  
FLIGHT STANDARDS SERVICE  
STANDARD TERMINAL ARRIVAL (STAR)

Bearings, headings, courses, tracks and radials are magnetic. Elevations and altitudes are in feet, MSL. Altitudes are minimum altitudes unless otherwise indicated.  
Distances are in nautical miles (NM). Graphic depictions attached.

Arrival Name	Number	STAR Computer Code	Superseded Number	Dated	Effective Date
<b>TIMMO (RNAV)</b>	<b>ONE</b>	<b>HILRS.TIMMO1</b>	<b>NONE</b>		<b>27JAN2022</b>
Graphic Depiction 1					



QUALITY  
18  
CHECKED

FEDERAL AVIATION ADMINISTRATION  
FLIGHT STANDARDS SERVICE  
STAR (DATA RECORD)

Arrival Name TIMMO (RNAV)		Number ONE		STAR Computer Code HILRS.TIMMO1		Superseded Number NONE		Dated	Effective Date 27JAN2022
FIX/NAVAID	LAT/LONG	C	FO/FB	LEG TYPE	TC	DIST (NM)	ALTITUDE	SPEED	REMARKS
En Route Transition									
HTHWY	401201.96N / 0961222.51W	Y		IF					HTHWY.TIMMO1
HILRS	403136.16N / 0960922.41W	Y	FB	TF	006.68	19.69	AT/ABOVE 11000		
Common Route									
HILRS	403136.16N / 0960922.41W	Y		IF			AT/ABOVE 11000		HILRS.TIMMO1
TIMMO	403926.62N / 0960824.50W	Y	FB	TF	005.36	07.87			
MOONR	405401.38N / 0960616.55W	Y	FB	TF	006.33	14.66			
Common Route									
HILRS	403136.16N / 0960922.41W	Y		IF			AT/ABOVE 11000		HILRS.TIMMO1
MOONR	405401.38N / 0960616.55W	Y	FB	TF	005.98	22.53			
GRNTT	405737.22N / 0960141.48W	Y	FO	TF	044.00	05.00	AT 6000		
KOFF				FM	042.00				
Runway Transition									
MOONR	405401.38N / 0960616.55W	Y		IF					
CRPET	411606.67N / 0960256.08W	Y	FO	TF	006.51	22.22	AT 5000	AT 210K	
KOMA:RWY 14L,RWY 14R,RWY 18				VM	342.00				
Runway Transition									
MOONR	405401.38N / 0960616.55W	Y		IF					
BAARK	410808.61N / 0955343.31W	Y	FO	TF	033.89	17.01	AT 4000		
KOMA:RWY 32L,RWY 32R,RWY 36				FM	032.00				

