

FEDERAL AVIATION ADMINISTRATION
FLIGHT STANDARDS SERVICE
STANDARD TERMINAL ARRIVAL (STAR)

Bearings, headings, courses, tracks and radials are magnetic. Elevations and altitudes are in feet, MSL. Altitudes are minimum altitudes unless otherwise indicated.
Distances are in nautical miles (NM). Graphic depictions attached.

Arrival Name	Number	STAR Computer Code	Superseded Number	Dated	Effective Date
BLFRG (RNAV)	TWO	BLFRG.BLFRG2	ONE	08/12/2021	19 May 2022

TRANSITION ROUTES:

Transition Name	Transition Computer Codes	From FIX/NAVAID	To FIX/NAVAID	Course	Distance	MEA	MOCA	MAA	Crossing Altitudes / Fixes
COREA	COREA.BLFRG2	COREA	COREA						
			BLFRG	313.75	42.85	4000	1500		
FERAL	FERAL.BLFRG2	FERAL	FERAL						
			BLFRG	358.95	34.27	4000	2600		
JAYMC	JAYMC.BLFRG2	JAYMC	JAYMC						
			BLFRG	288.74	25.89	4000	1400		
OCTAL	OCTAL.BLFRG2	OCTAL	OCTAL						
			COREA	303.27	61.74	4000	1500		
			BLFRG	313.75	42.85	4000	1500		

ARRIVAL ROUTE DESCRIPTION:

KTPA: FROM BLFRG ON TRACK 327.92/21.48 TO COSAR, THEN ON TRACK 325.33/5.65 TO DSIDE.

LANDING KTPA RWY 1L/R, 10: FROM DSIDE ON TRACK 320.75/20.92 TO JSTRM, THEN ON TRACK 275.87/2.00 TO CROSS CRUZZ AT OR ABOVE 4000, THEN ON HEADING 275.87. EXPECT RADAR VECTORS TO FINAL APPROACH COURSE.

LANDING KTPA RWY 19L/R, 28: FROM DSIDE ON TRACK 320.75/20.92 TO JSTRM, THEN ON TRACK 006.22/17.89 TO GUZDA, THEN ON TRACK 006.23/12.33 TO CROSS LISAF AT OR ABOVE 4000 AND AT 210 KIAS, THEN ON TRACK 005.00. EXPECT RADAR VECTORS TO FINAL APPROACH COURSE.

LANDING KPIE/KMCF: FROM BLFRG ON TRACK 327.92/21.48 TO COSAR, THEN ON TRACK 325.33/5.65 TO DSIDE, THEN ON TRACK 320.84/7.84 TO CROSS OXISE AT OR ABOVE 4000, THEN ON HEADING 285.00. EXPECT RADAR VECTORS TO FINAL APPROACH COURSE.

PBN REQUIREMENT NOTES

RNAV 1 - DME/DME/IRU OR GPS

EQUIPMENT REQUIREMENT NOTES

RADAR REQUIRED

PROCEDURAL DATA NOTES:

NOTE: JET AND TURBOPROP AIRCRAFT ONLY.

FIXES AND/OR HOLDING PATTERNS:

CHART HOLDING AT BLFRG: HOLD SE, RT, 317.03 INBOUND, 10 NM LEGS.

CHART HOLDING AT COSAR: HOLD SE, LT, 327.92 INBOUND, 10 NM LEGS.

CHART HOLDING AT TOSHE: HOLD S, LT, 340.00 INBOUND, 10 NM LEGS.

CHART LAGOO, BUCCS.

COMMUNICATIONS:

CHART: TAMPA APP CON

This is a corrected copy of the procedure published in NFDD 056.
** See page 3 for details. **

FEDERAL AVIATION ADMINISTRATION
FLIGHT STANDARDS SERVICE
STANDARD TERMINAL ARRIVAL (STAR)

Bearings, headings, courses, tracks and radials are magnetic. Elevations and altitudes are in feet, MSL. Altitudes are minimum altitudes unless otherwise indicated.
Distances are in nautical miles (NM). Graphic depictions attached.

Arrival Name	Number	STAR Computer Code	Superseded Number	Dated	Effective Date
BLFRG (RNAV)	TWO	BLFRG.BLFRG2	ONE	08/12/2021	19 May 2022

AIRPORTS SERVED:

TAMPA, FL (KTPA)
TAMPA, FL (KMCF)
ST PETERSBURG-CLEARWATER, FL (KPIE)

LOST COMMUNICATIONS PROCEDURE:REMARKS:

THE ENVIRONMENTAL REVIEW UNDER ORDER 1050.1 (LATEST EDITION) AND THE NOISE SCREENING HAVE BEEN ACCOMPLISHED.

ADDITIONAL FLIGHT DATA:

DME/DME ASSESSMENT: SAT (RNP 2.0)
MAG VAR: KTPA 05W/2010
CHART AT CRUZZ TERMINUS: KTPA LDG RWY 1L/R, 10.
CHART AT LISAF TERMINUS: KTPA LDG RWY 19L/R, 28.
CHART AT OXISE TERMINUS: LDG KMCF/KPIE.

FLIGHT INSPECTED BY:

GARY BELL
Name

FPO
Organization

03/15/2022
Date

Digitally signed by
ALLAN WILL
Apr 05, 2022

Signature

DEVELOPED BY:

VICKI TURNER
Name

DESIGN IMPLEMENTATION MANAGER
AJV-22
Organization

10/01/2021
Date

Digitally signed by
ALLAN WILL
Apr 05, 2022

Signature

APPROVED BY:

MARLON ROBINSON
Name

MANAGER, AJV-A420
Organization

Date

Digitally signed by
ALLAN WILL
Apr 05, 2022

Signature

CHANGES:

1. EXTENDED RWY 19L/R, 28 TRANSITION TO LISAF AT OR ABOVE 4000, ENDING ON FM LEG 005.00.
2. CHANGED 'LANDING KTPA RWY 1L/R, 28' TO 'LANDING KTPA RWY 1L/R, 10' IN ARRIVAL ROUTE DESCRIPTION.
3. CHANGED 'LANDING KTPA RWY 19L/R, 10' TO 'LANDING KTPA RWY 19L/R, 28' IN ARRIVAL ROUTE DESCRIPTION.
4. DELETED: KVDF FROM PROCEDURE.
5. DELETED: 5000 at GUZDA.
6. AMENDED: AT 6000 RESTRICTION at CRUZZ TO AT OR ABOVE 4000.

FEDERAL AVIATION ADMINISTRATION
FLIGHT STANDARDS SERVICE
STANDARD TERMINAL ARRIVAL (STAR)

Bearings, headings, courses, tracks and radials are magnetic. Elevations and altitudes are in feet, MSL. Altitudes are minimum altitudes unless otherwise indicated.
Distances are in nautical miles (NM). Graphic depictions attached.

Arrival Name	Number	STAR Computer Code	Superseded Number	Dated	Effective Date
BLFRG (RNAV)	TWO	BLFRG.BLFRG2	ONE	08/12/2021	19 May 2022

7. AMENDED: AT 10000 RESTRICTION at OXISE TO AT OR ABOVE 4000.
8. REMOVED: NOTE: Primary landing Rwy 01L/R, 19L/R.
9. REMOVED NOTE: TPA Landing North: Expect 250KIAS at DSIDE
10. AMENDED: EQUIPMENT REQUIRED NOTE FROM "RADAR REQUIRED FOR NON-GPS EQUIPPED AIRCRAFT" TO "RADAR REQUIRED".
11. ADDED: OCTAL ENROUTE TRANSITION.
12. LOWERED TRANSITION MEAS AT BLFRG FROM 12000 TO 4000.
13. REMOVED NOTE 'DESCEND VIA MACH NUMBER UNTIL INTERCEPTING 280 KTS, MAINTAIN 280 KTS UNTIL ASSIGNED BY ATC.

REASONS:

1. PROVIDES MORE EFFICIENT ROUTING TO RWYs 19L/R, 28 FINAL APPROACH COURSE.
- 2-3. CORRECTLY ALIGNS RWY TRANSITIONS WITH APPROPRIATE RWY CONFIGURATIONS.
- 4-7, 12. ATC REQUEST, AIRSPACE INTEGRITY.
8. ATC REQUEST, INCREASE EFFICIENCY.
9. CHART NOTE CRITERIA DOES NOT ALLOW "EXPECT AIRSPEED" NOTES.
10. CORRECTED EQUIPMENT REQUIRED.
11. ATC REQUEST, TRAFFIC FLOW.
13. NO LONGER ALLOWED IN CRITERIA.

03/31/22: THIS IS A CORRECTED COPY OF THE FORM APPROVED ON 03/18/22.

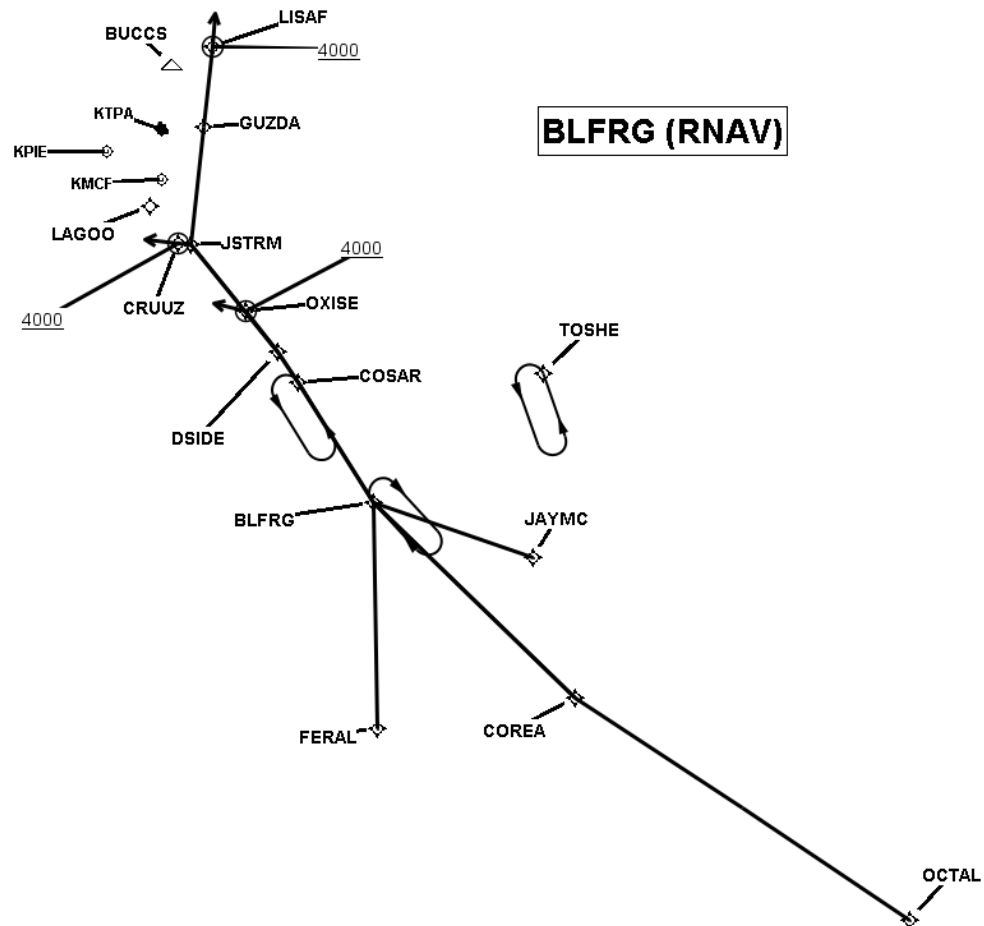
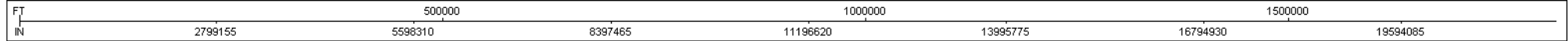
1. REMOVED PROCEDURAL DATA NOTES: TPA Landing North: Expect RADAR Vectors prior to CRUUZ, TPA Landing South: Expect RADAR Vectors prior to GUZDA, and Landing all Satellite Airports: Expect RADAR Vectors prior to OXISE.
2. REMOVED AIRPORT NAMES FROM AIRPORTS SERVED - PER AFS FINDING FROM DADES (RNAV) STAR REVIEW.
3. REMOVED REFERENCES TO LOST COMMUNICATIONS PROCEDURES IN CHANGES/REASONS SECTION OF 17.1 FORM AND RENUMBERED LIST - LOST COMMUNICATIONS PROCEDURES PREVIOUSLY REMOVED PER FLMP TEAM REQUEST.
4. REMOVED TEXT 'OR AS ASSIGNED BY ATC' IN ARRIVAL ROUTE DESCRIPTION.

FEDERAL AVIATION ADMINISTRATION
FLIGHT STANDARDS SERVICE
STANDARD TERMINAL ARRIVAL (STAR)

Bearings, headings, courses, tracks and radials are magnetic. Elevations and altitudes are in feet, MSL. Altitudes are minimum altitudes unless otherwise indicated.
Distances are in nautical miles (NM). Graphic depictions attached.

Arrival Name	Number	STAR Computer Code	Superseded Number	Dated	Effective Date
BLFRG (RNAV)	TWO	BLFRG.BLFRG2	ONE	08/12/2021	19 May 2022

Graphic Depiction 1



FEDERAL AVIATION ADMINISTRATION
FLIGHT STANDARDS SERVICE
STANDARD TERMINAL ARRIVAL (STAR)

Bearings, headings, courses, tracks and radials are magnetic. Elevations and altitudes are in feet, MSL. Altitudes are minimum altitudes unless otherwise indicated.
Distances are in nautical miles (NM). Graphic depictions attached.

Arrival Name	Number	STAR Computer Code	Superseded Number	Dated	Effective Date
BLFRG (RNAV)	TWO	BLFRG.BLFRG2	ONE	08/12/2021	19 May 2022

Graphic Depiction 2

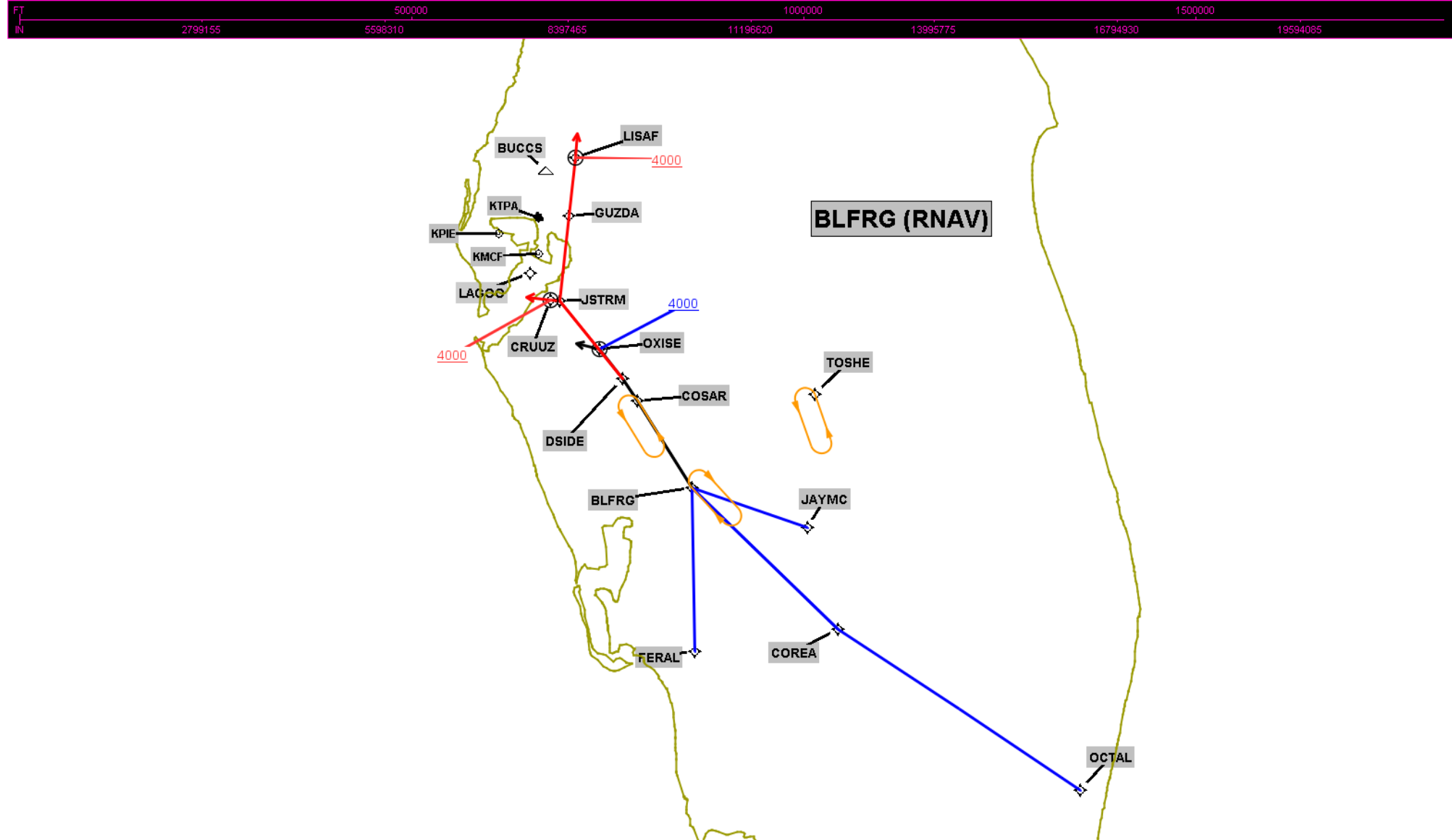


FEDERAL AVIATION ADMINISTRATION
FLIGHT STANDARDS SERVICE
STANDARD TERMINAL ARRIVAL (STAR)

Bearings, headings, courses, tracks and radials are magnetic. Elevations and altitudes are in feet, MSL. Altitudes are minimum altitudes unless otherwise indicated.
Distances are in nautical miles (NM). Graphic depictions attached.

Arrival Name	Number	STAR Computer Code	Superseded Number	Dated	Effective Date
BLFRG (RNAV)	TWO	BLFRG.BLFRG2	ONE	08/12/2021	19 May 2022

Graphic Depiction 3



FEDERAL AVIATION ADMINISTRATION
FLIGHT STANDARDS SERVICE
STAR (DATA RECORD)

Arrival Name BLFRG (RNAV)		Number TWO		STAR Computer Code BLFRG.BLFRG2		Superseded Number ONE		Dated 08/12/2021	Effective Date 19 May 2022
FIX/NAVAID	LAT/LONG	C	FO/FB	LEG TYPE	TC	DIST (NM)	ALTITUDE	SPEED	REMARKS
En Route Transition									
COREA	263808.96N / 0811252.29W	Y		IF					COREA.BLFRG2
BLFRG	270458.21N / 0815018.76W	Y	FB	TF	308.75	42.85			
En Route Transition									
FERAL	263047.36N / 0814615.74W	Y		IF					FERAL.BLFRG2
BLFRG	270458.21N / 0815018.76W	Y	FB	TF	353.95	34.27			
En Route Transition									
JAYMC	265851.00N / 0812208.00W	Y		IF					JAYMC.BLFRG2
BLFRG	270458.21N / 0815018.76W	Y	FB	TF	283.74	25.89			
En Route Transition									
OCTAL	260901.92N / 0801211.60W	Y		IF					OCTAL.BLFRG2
COREA	263808.96N / 0811252.29W	Y	FB	TF	298.27	61.74			
BLFRG	270458.21N / 0815018.76W	Y	FB	TF	308.75	42.85			
Common Route									
BLFRG	270458.21N / 0815018.76W	Y		IF					BLFRG.BLFRG2
COSAR	272208.50N / 0820451.46W	Y	FB	TF	322.92	21.48			
DSIDE	272630.06N / 0820854.62W	Y	FB	TF	320.33	05.65			
Common Route									
BLFRG	270458.21N / 0815018.76W	Y		IF					BLFRG.BLFRG2
COSAR	272208.50N / 0820451.46W	Y	FB	TF	322.92	21.48			
DSIDE	272630.06N / 0820854.62W	Y	FB	TF	320.33	05.65			
OXISE	273208.28N / 0821503.25W	Y	FO	TF	315.84	07.84	AT/ABOVE 4000		
KMCF,KPIE				VM	280.00				

FEDERAL AVIATION ADMINISTRATION
FLIGHT STANDARDS SERVICE
STAR (DATA RECORD)

Arrival Name BLFRG (RNAV)	Number TWO	STAR Computer Code BLFRG.BLFRG2	Superseded Number ONE	Dated 08/12/2021	Effective Date 19 May 2022
-------------------------------------	----------------------	---	---------------------------------	----------------------------	--------------------------------------

FIX/NAVAID	LAT/LONG	C	FO/FB	LEG TYPE	TC	DIST (NM)	ALTITUDE	SPEED	REMARKS
Runway Transition									
DSIDE	272630.06N / 0820854.62W	Y		IF					
JSTRM	274130.57N / 0822521.07W	Y	FB	TF	315.75	20.92			
CRUUZ	274132.38N / 0822736.55W	Y	FO	TF	270.87	02.00	AT/ABOVE 4000		
KTPA:RWY 1L,RWY 1R,RWY 10				VM	270.87				
Runway Transition									
DSIDE	272630.06N / 0820854.62W	Y		IF					
JSTRM	274130.57N / 0822521.07W	Y	FB	TF	315.75	20.92			
GUZDA	275926.58N / 0822455.15W	Y	FB	TF	001.22	17.89			
LISAF	281148.36N / 0822437.17W	Y	FO	TF	001.23	12.33	AT/ABOVE 4000	AT 210K	
KTPA:RWY 19L,RWY 19R,RWY 28				FM	000.00				