

OLD

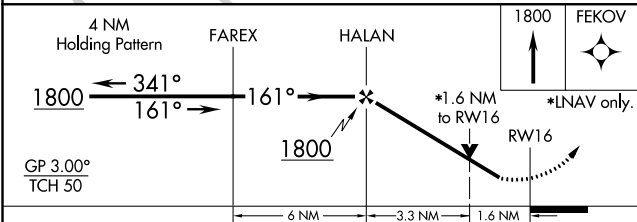
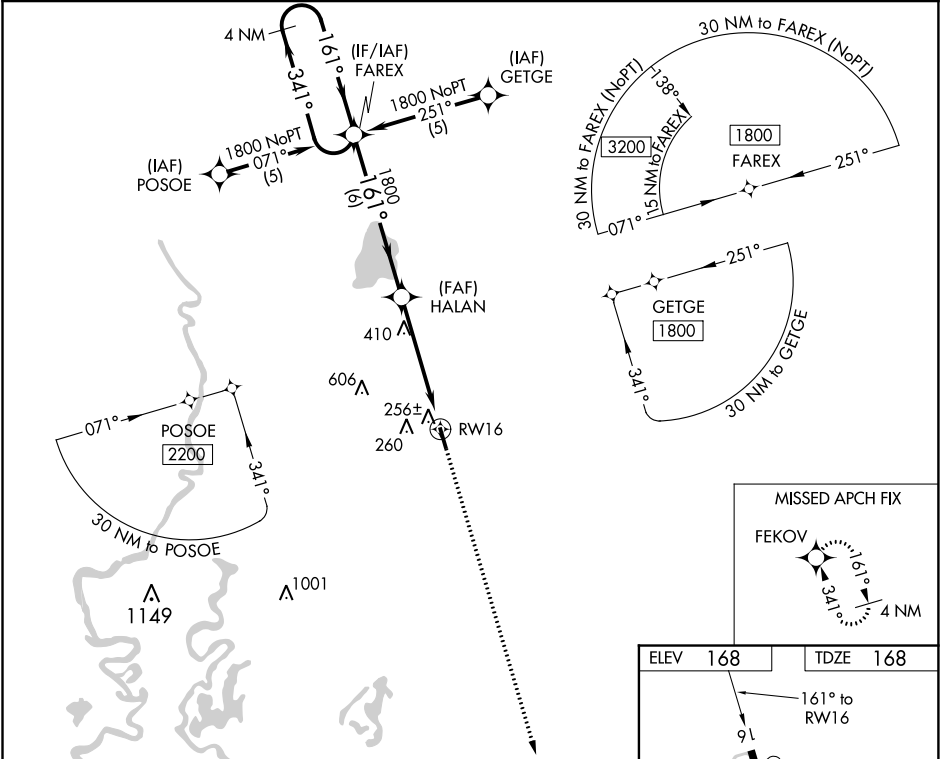
| | | |
|--|------------------------|---|
| WAAS CH 58307 W16A | APP CRS 161° | Rwy ldg 4002 TDZE 168 Apt Elev 168 |
|--|------------------------|---|

RNAV (GPS) RWY 16
MOREHOUSE MEMORIAL (BQP)

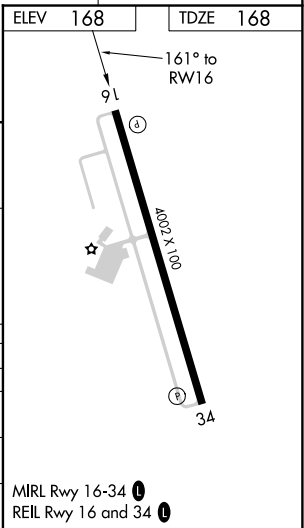
⚠ For uncompensated Baro-VNAV systems, LNAV/VNAV NA below -15°C (5°F) or above 54°C (130°F). DME/DME RNP-0.3 NA. Visibility reduction by helicopters NA. When local altimeter setting not received, use Monroe altimeter setting and increase all DA/MDA 60 feet and all visibilities ¼ mile. Baro-VNAV NA when using Monroe altimeter setting. VDP NA when using Monroe altimeter setting.

MISSSED APPROACH:
Climb to 1800 direct FEKOV and hold.

| | | |
|----------------------------|--|--|
| AWOS-3PT 118.375 | MONROE APP CON ★ 126.9 307.9 | UNICOM 122.8 (CTAF) 0 |
|----------------------------|--|--|



| CATEGORY | A | B | C | D |
|--------------|--------|--------------|------------------------|----|
| LPV DA | 499-1¼ | 331 (400-1¼) | | NA |
| LNAV/VNAV DA | 526-1¼ | 358 (400-1¼) | | NA |
| LNAV MDA | 720-1 | 552 (600-1) | 720-1½ 552 (600-1½) | NA |
| CIRCLING | 720-1 | 552 (600-1) | 780-1¾ 612 (700-1¾) | NA |



SC-4, 10 SEP 2020 to 08 OCT 2020

SC-4, 10 SEP 2020 to 08 OCT 2020

KBQP
MOREHOUSE MEMORIAL
BASTROP, LA
100K CIRCLING
ALL PROCEDURES

