

FEDERAL AVIATION ADMINISTRATION
FLIGHT STANDARDS SERVICE
STANDARD TERMINAL ARRIVAL (STAR)

Bearings, headings, courses, tracks and radials are magnetic. Elevations and altitudes are in feet, MSL. Altitudes are minimum altitudes unless otherwise indicated.
Distances are in nautical miles (NM). Graphic depictions attached.

Arrival Name	Number	STAR Computer Code	Superseded Number	Dated	Effective Date
BRIXX (RNAV)	THREE	BRIXX.BRIXX3	TWO	07/21/2016	17JUNE2021

TRANSITION ROUTES:

Transition Name	Transition Computer Codes	From FIX/NAVAID	To FIX/NAVAID	Course	Distance	MEA	MOCA	MAA	Crossing Altitudes / Fixes
CHBLI	CHBLI.BRIXX3	CHBLI	CHBLI						AT/ABOVE FL280
			GRIJO	165.48	22.23	12000	5500		AT/ABOVE FL220
			ZINNN	165.49	07.85	12000	4100		
			CORKK	163.63	19.74	12000	4800		AT/ABOVE 14000
			BRIXX	126.77	09.08	12000	3900		AT 12000

ARRIVAL ROUTE DESCRIPTION:

FROM BRIXX ON TRACK 144.19/20.99 TO LUYTA, THEN ON TRACK 140.73/4.21 TO JILNA, THEN ON HEADING 105.00 OR AS ASSIGNED BY ATC. EXPECT RADAR VECTORS TO FINAL APPROACH COURSE.

PROCEDURAL DATA NOTES:

NOTE: RADAR REQUIRED

NOTE: RNAV 1

NOTE: DME/DME/IRU OR GPS REQUIRED

FIXES AND/OR HOLDING PATTERNS:

CHART HOLDING AT ZINNN: N, RT, 165.49 INBOUND, 10 NM LEGS.

COMMUNICATIONS:

CHART: ZOA

CHART: NORCAL APP CON

CHART: TWR

CHART: GND CON

AIRPORTS SERVED:

NORMAN Y MINETA SAN JOSE INTL, SAN JOSE, CA (KSJC)

LOST COMMUNICATIONS PROCEDURE:

REMARKS:

ADDITIONAL FLIGHT DATA:

DME/DME ASSESSMENT: SAT (RNP 2.0)

REFERENCE MAGNETIC VARIATION = KSJC 13E/2020

CHART AT JILNA TERMINUS: LDG KSJC

FEDERAL AVIATION ADMINISTRATION
FLIGHT STANDARDS SERVICE
STANDARD TERMINAL ARRIVAL (STAR)

Bearings, headings, courses, tracks and radials are magnetic. Elevations and altitudes are in feet, MSL. Altitudes are minimum altitudes unless otherwise indicated.
Distances are in nautical miles (NM). Graphic depictions attached.

Arrival Name	Number	STAR Computer Code	Superseded Number	Dated	Effective Date
BRIXX (RNAV)	THREE	BRIXX.BRIXX3	TWO	07/21/2016	17JUNE2021
<u>FLIGHT INSPECTED BY:</u>					
DANIEL C FAVORITE		FICO	3/2/2021	<i>Digitally signed by</i> ALLAN WILL Mar 05, 2021 <i>Signature</i>	
Name		Organization	Date		
<u>DEVELOPED BY:</u>					
JOSEPH BLANCO		AJV-A423	01/25/2021	<i>Digitally signed by</i> JOSEPH A BLANCO Jan 25, 2021 <i>Signature</i>	
Name		Organization	Date		
<u>APPROVED BY:</u>					
MARLON ROBINSON		AJV-A420		<i>Digitally signed by</i> ALLAN WILL Mar 05, 2021 <i>Signature</i>	
Name		Organization	Date		

CHANGES:

1. MOVED JILNA 1.27 NM SW.
2. ADDED VM LEG TO JILNA HEADING 105.
3. REMOVED YADUT AND TF LEG 113.
4. REMOVED MEAS AND MOCAs FROM COMMON ROUTE.
5. ADDED RUNWAY TERMINUS DATA LDG KSJC.
6. PUBLISHED MOCA VALUES / REMOVED DO NOT CHART MOCA'S FROM ADDITIONAL FLIGHT DATA.
7. REMOVED RECOMMENDED NAVAID.

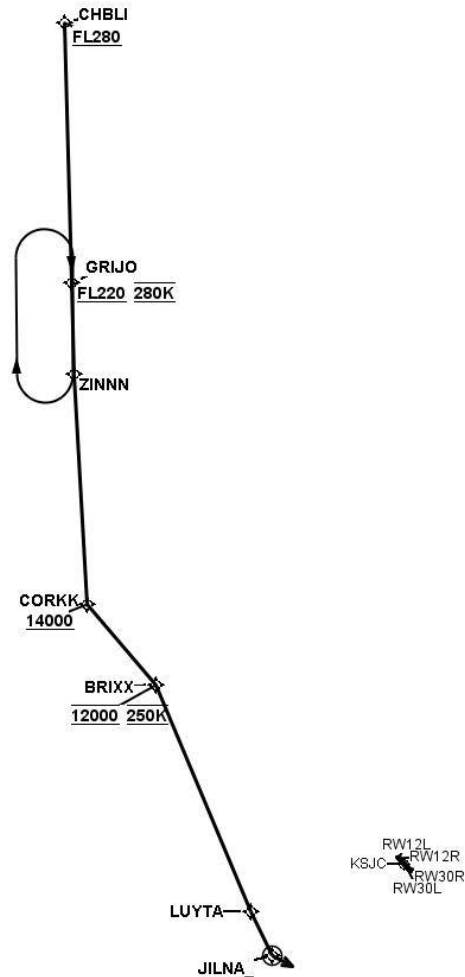
REASONS:

1. TO ALIGN WITH RNP AR APPROACH BEING AMENDED.
2. ATC REQUEST TO FACILITATE RADAR VECTORS.
3. ATC REQUEST TO MITIGATE SEPARATION ISSUES FROM KSFO SERFR STAR.
- 4-5, 7. TO CONFORM TO CRITERIA.
6. REQUIRED TO PUBLISH IAW FLIGHT STANDARDS.

FEDERAL AVIATION ADMINISTRATION
FLIGHT STANDARDS SERVICE
STANDARD TERMINAL ARRIVAL (STAR)

Bearings, headings, courses, tracks and radials are magnetic. Elevations and altitudes are in feet, MSL. Altitudes are minimum altitudes unless otherwise indicated.
Distances are in nautical miles (NM). Graphic depictions attached.

Arrival Name	Number	STAR Computer Code	Superseded Number	Dated	Effective Date
BRIX (RNAV)	THREE	BRIX.BRIX3	TWO	07/21/2016	17JUNE2021
Graphic Depiction 1					



FEDERAL AVIATION ADMINISTRATION
FLIGHT STANDARDS SERVICE
STAR (DATA RECORD)

Arrival Name BRIXX (RNAV)	Number THREE	STAR Computer Code BRIXX.BRIXX3	Superseded Number TWO	Dated 07/21/2016	Effective Date 17JUNE2021
-------------------------------------	------------------------	---	---------------------------------	----------------------------	-------------------------------------

FIX/NAVAID	LAT/LONG	C	FO/FB	LEG TYPE	TC	DIST (NM)	ALTITUDE	SPEED	REMARKS
En Route Transition									
CHBLI	383350.32N / 1223219.55W	Y		IF			AT/ABOVE FL280		CHBLI.BRIXX3
GRIJO	381135.89N / 1223134.66W	Y	FB	TF	178.48	22.23	AT/ABOVE FL220	AT 280K	
ZINNN	380344.51N / 1223118.92W	Y	FB	TF	178.49	07.85			
CORKK	374400.92N / 1222951.18W	Y	FB	TF	176.63	19.74	AT/ABOVE 14000		
BRIXX	373704.24N / 1222228.30W	Y	FB	TF	139.77	09.08	AT 12000	AT 250K	
Common Route									
BRIXX	373704.24N / 1222228.30W	Y		IF			AT 12000	AT 250K	BRIXX.BRIXX3
LUYTA	371741.60N / 1221216.39W	Y	FB	TF	157.19	20.99			
JILNA	371354.92N / 1220956.50W	Y	FO	TF	153.73	04.21			
KSJC				VM	118.00				

