

CANTON, GEORGIA

AL-6949 (FAA)

19003

WAAS CH <b>65923</b> <b>W23A</b>	APP CRS <b>227°</b>	Rwy Idg TDZE Apt Elev <b>5003</b> <b>1218</b> <b>1219</b>
--	------------------------	--

**RNAV (GPS) RWY 23**

CHEROKEE COUNTY (CNI)

**⚠** DME/DME RNP-0.3 NA. Visibility reduction by helicopters NA. When local altimeter setting not received, use Marietta altimeter setting and increase all MDA 80 feet; increase LNAV and Circling Cat C visibility  $\frac{1}{8}$  mile, increase LP Cat C visibility  $\frac{1}{4}$  mile. Straight-in/Circling Rwy 23 procedure NA at night.

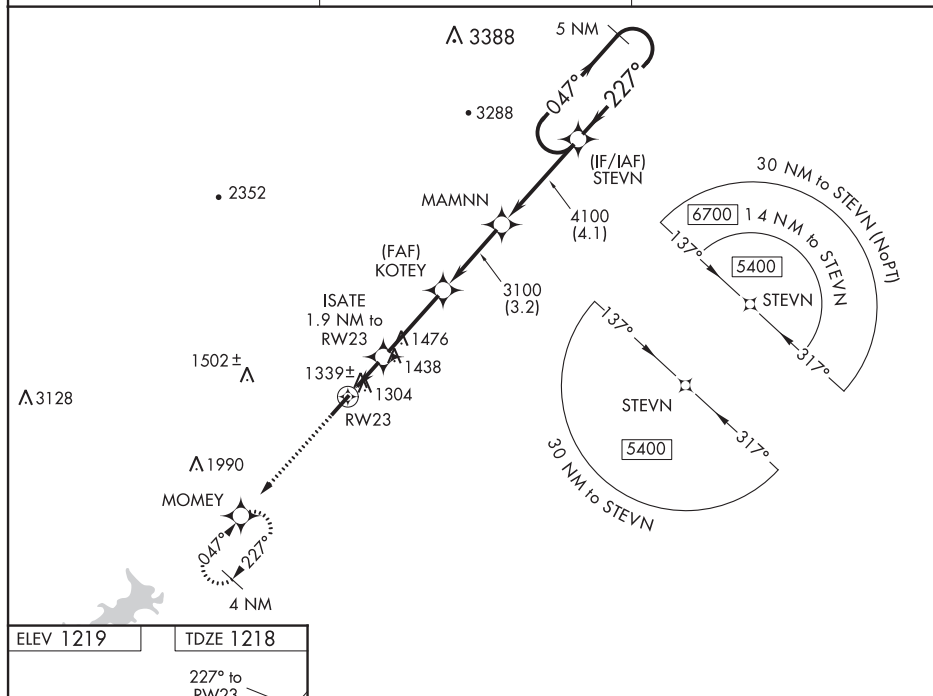
**MISSED APPROACH:** Climb to 4000 direct MOMEY and hold, continue climb-in-hold to 4000.

AWOS-3  
**119.825**

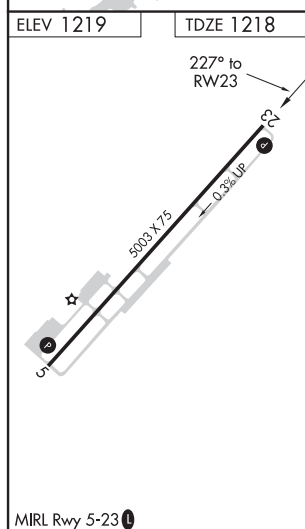
ATLANTA APP CON  
**121.0 268.7**

UNICOM  
**123.0 (CTAF)**

SE-4, 13 AUG 2020 to 10 SEP 2020



SE-4, 13 AUG 2020 to 10 SEP 2020



MIRL Rwy 5-23

CANTON, GEORGIA  
Amdt 1A 24JUL14

34°19'N-84°25'W

**RNAV (GPS) RWY 23**

4000		MOMEY		VGSI and descent angles not coincident (VGSI Angle 3.00/TCH 32).		5 NM Holding Pattern	
RW23		ISATE 1.9 NM to RW23		KOTEY		MAMNN	
1920		3100		4100		5400	
1.9 NM		3.2 NM		3.2 NM		4.1 NM	
CATEGORY		A		B		C	
LP MDA		1600-1		382 (400-1)		1600-1 $\frac{1}{8}$ 382 (400-1 $\frac{1}{8}$ )	
LNAV MDA		1740-1		522 (600-1)		1740-1 $\frac{5}{8}$ 522 (600-1 $\frac{5}{8}$ )	
CIRCLING		1740-1		521 (600-1)		1740-1 $\frac{5}{8}$ 521 (600-1 $\frac{5}{8}$ )	