

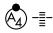
OLD

MORRISTOWN, TENNESSEE

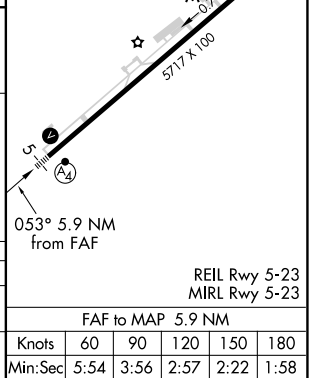
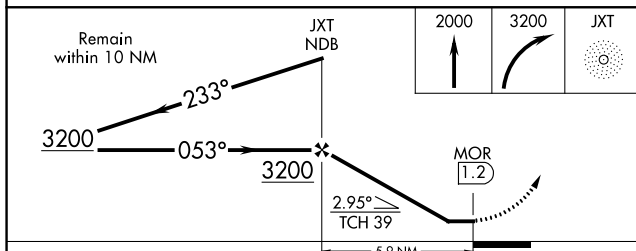
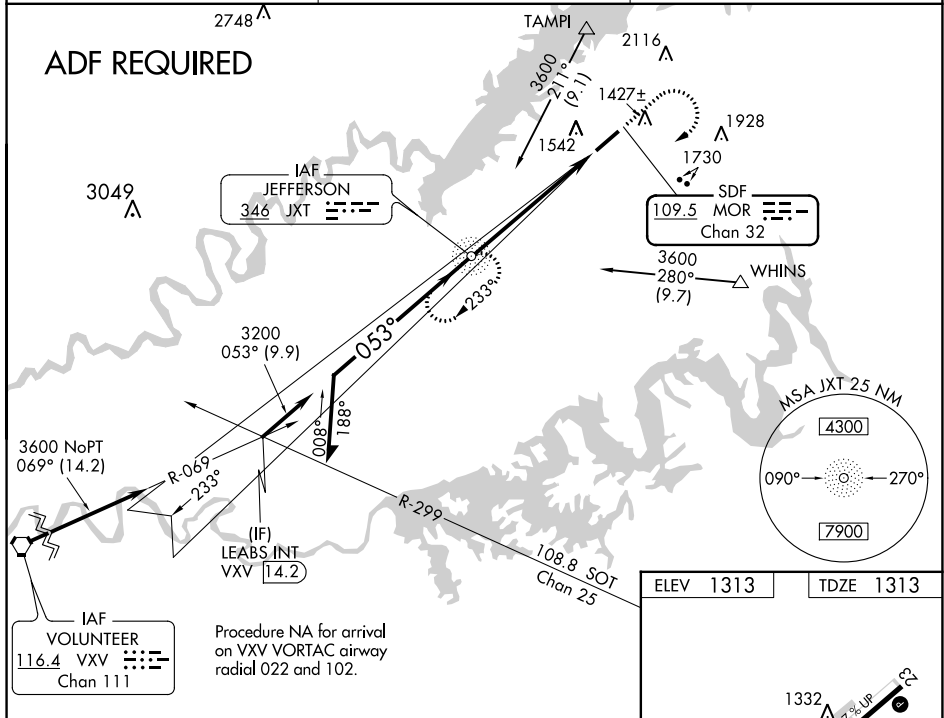
20086

SDF MOR 109.5 Chan 32	APP CRS 053°	Rwy Idg TDZE 1313 Apt Elev 1313
---	------------------------	---

SDF RWY 5
MOORE-MURRELL (MOR)

<p>ADF Required. When local altimeter setting not received, use Mc Ghee Tyson altimeter setting and increase all MDA 140 feet, S-5 Cats C and D visibility to 1¾ miles, Circling Cat C visibility to 2¾ miles, and Circling Cat D visibility to 3 miles. For inop MALSF, increase S-5 Cats C and D visibility to 1½ miles. For inop MALSF, when using Mc Ghee Tyson altimeter setting, increase S-5 Cats C and D visibility to 2 miles.</p>	<p>MALSF </p>	<p>MISSED APPROACH: Climb to 2000 then climbing right turn to 3200 direct JXT NDB and hold.</p>
---	--	---

AWOS-3 126.725	KNOXVILLE APP CON 132.8 360.8	UNICOM 122.8 (CTAF) 0
--------------------------	---	---------------------------------



MORRISTOWN, TENNESSEE

Amdt 5C 15OCT15

36°11'N - 83°23'W

MOORE-MURRELL (MOR)
SDF RWY 5

SE-1, 10 SEP 2020 to 08 OCT 2020

KMOR
MOORE-MURRELL
MORRISTOWN, TN
100K CIRCLING
ALL PROCEDURES

