

FEDERAL AVIATION ADMINISTRATION
FLIGHT STANDARDS SERVICE
STANDARD TERMINAL ARRIVAL (STAR)

Bearings, headings, courses, tracks and radials are magnetic. Elevations and altitudes are in feet, MSL. Altitudes are minimum altitudes unless otherwise indicated.
Distances are in nautical miles (NM). Graphic depictions attached.

Arrival Name COKTL (RNAV)	Number TWO	STAR Computer Code COKTL.COKTL2	Superseded Number ONE	Dated 02/25/2021	Effective Date 14JULY2022				
TRANSITION ROUTES:									
Transition Name	Transition Computer Codes	From FIX/NAVAID	To FIX/NAVAID	Course	Distance	MEA	MOCA	MAA	Crossing Altitudes / Fixes
FLCHR	FLCHR.COKTL2	FLCHR	FLCHR						AT/ABOVE FL240
			TBRAN	134.39	32.71	FL210	9700		
			ARYEL	120.19	17.77	FL210	9700	AT/ABOVE FL210	
			COKTL	120.36	18.46	16000	9700	BETWEEN 16000 AND FL190	
GIINN	GIINN.COKTL2	GIINN	GIINN						
			TBRAN	114.84	15.30	FL210	9700		
			ARYEL	120.19	17.77	FL210	9700	AT/ABOVE FL210	
			COKTL	120.36	18.46	16000	9700	BETWEEN 16000 AND FL190	
TQILA	TQILA.COKTL2	TQILA	TQILA						
			BASIC	134.22	10.51	FL240	9700		
			FLCHR	134.27	16.84	FL240	9700	AT/ABOVE FL240	
			TBRAN	134.39	32.71	FL210	9700		
			ARYEL	120.19	17.77	FL210	9700	AT/ABOVE FL210	
			COKTL	120.36	18.46	16000	9700	BETWEEN 16000 AND FL190	

ARRIVAL ROUTE DESCRIPTION:

FROM COKTL ON TRACK 116.88/10.95 TO CROSS ZLLDA AT OR ABOVE 14000.

LANDING RWY 1L/R: FROM ZLLDA ON TRACK 150.75/13.11 TO CROSS MEZKL AT OR BELOW 12000, THEN ON TRACK 150.65/6.34 TO LOOMI, THEN ON TRACK 117.92/7.13 TO CROSS ZINPI BETWEEN 10000 AND 11000, THEN ON TRACK 080.84/5.11 TO CROSS BAUMM BETWEEN 8600 AND 11000, THEN ON TRACK 030.29/5.03 TO CROSS ROAMN AT 8000 AND AT 210 KIAS. EXPECT ILS OR LOC RWY 1L OR RADAR VECTORS TO FINAL APPROACH COURSE.

LANDING RWY 8L/R: FROM ZLLDA ON TRACK 150.75/13.11 TO CROSS MEZKL AT OR BELOW 12000, THEN ON TRACK 150.65/6.34 TO LOOMI, THEN ON TRACK 117.92/7.13 TO CROSS ZINPI BETWEEN 10000 AND 11000, THEN ON TRACK 080.84/5.11 TO CROSS BAUMM BETWEEN 8600 AND 11000, THEN ON TRACK 006.28/7.98 TO CROSS YAGGR AT 8000 AND AT 210 KIAS, THEN ON TRACK 005.00. EXPECT RADAR VECTORS TO FINAL APPROACH COURSE.

LANDING RWY 26L/R, 19L/R: FROM ZLLDA ON TRACK 099.72/16.64 TO CROSS DEEON AT OR ABOVE 12000, THEN ON TRACK 099.91/4.00 TO CROSS ENNVY AT OR ABOVE 11000, THEN ON TRACK 082.92/12.02 TO CROSS REDQN AT OR ABOVE 9000 AND AT 210 KIAS, THEN ON TRACK 083.06/2.40 TO TWAFL, THEN ON TRACK 079.32/2.17 TO CROSS BERBN AT 8000 AND AT 210 KIAS, THEN ON TRACK 079.32. EXPECT RADAR VECTORS TO FINAL APPROACH COURSE.

PBN REQUIREMENT NOTES

RNAV 1 - DME/DME/IRU OR GPS

EQUIPMENT REQUIREMENT NOTES

RADAR REQUIRED

PROCEDURAL DATA NOTES:

NOTE: JET AIRCRAFT ONLY

NOTE: GIINN TRANSITION ASSIGNED BY ATC--DO NOT FILE.

QUALITY
14
CHECKED

FEDERAL AVIATION ADMINISTRATION
FLIGHT STANDARDS SERVICE
STANDARD TERMINAL ARRIVAL (STAR)

Bearings, headings, courses, tracks and radials are magnetic. Elevations and altitudes are in feet, MSL. Altitudes are minimum altitudes unless otherwise indicated.
Distances are in nautical miles (NM). Graphic depictions attached.

Arrival Name	Number	STAR Computer Code	Superseded Number	Dated	Effective Date
COKTL (RNAV)	TWO	COKTL.COKTL2	ONE	02/25/2021	14JULY2022

FIXES AND/OR HOLDING PATTERNS:

CHART HOLDING AT ARYL: HOLD NW, RT, 120.19 INBOUND, 11 NM LEGS.

CHART HOLDING AT COKTL: HOLD NW, RT, 120.36 INBOUND, 10 NM LEGS.

COMMUNICATIONS:

CHART: LAS APP CON

CHART: LAS TOWER

AIRPORTS SERVED:

HARRY REID INTL, LAS VEGAS, NV (KLAS)

LOST COMMUNICATIONS PROCEDURE:

LANDING RUNWAY 1L: AT ROAMN EXECUTE ILS OR LOCALIZER RWY 1L APPROACH.

LANDING RUNWAY 8R: AT YAGGR EXECUTE RNAV (RNP) RWY 8R APPROACH, IF UNABLE, PROCEED VIA LAST TRACK TO INTERCEPT THE FINAL APPROACH COURSE; IF UNABLE, MAINTAIN 7000 DIRECT LAS VORTAC THEN DIRECT BLD VORTAC AND EXECUTE ILS OR LOCALIZER RWY 26L APPROACH.

LANDING RUNWAY 26L: AT BERBN EXECUTE ILS OR LOCALIZER RWY 26L APPROACH.

LANDING RUNWAY 26R: AT BERBN EXECUTE ILS OR LOCALIZER RWY 26R APPROACH.

REMARKS:

MEAs FL190 AND ABOVE NEEDED TO MITIGATE CRITICAL DMEs AND INSURE ADEQUATE SIGNAL COVERAGE FOR DME/DME/IRU NAVIGATION.

FIX BAUMM UTILIZES 25 DEGREE BANK ANGLE COUPLED WITH 39 KNOT TAILWIND COMPONENT.

CONTROLLING OBST BAUMM TO YAGGR SEGMENT IS 5895 MSL AAO (DTED DATABASE IS HIGH IN THE REGION)

ADDITIONAL FLIGHT DATA:

DME/DME ASSESSMENT: SAT (RNP 2.0)

REFERENCE MAGNETIC VARIATION = KLAS 11E/2020

CHART AT ROAMN TERMINUS: KLAS LDG RWY 1L/R

CHART AT BERBN TERMINUS: KLAS LDG RWY 19L/R, 26L/R

CHART AT YAGGR TERMINUS: KLAS LDG RWY 8L/R

QUALITY
14
CHECKED

FEDERAL AVIATION ADMINISTRATION
FLIGHT STANDARDS SERVICE
STANDARD TERMINAL ARRIVAL (STAR)

Bearings, headings, courses, tracks and radials are magnetic. Elevations and altitudes are in feet, MSL. Altitudes are minimum altitudes unless otherwise indicated.
Distances are in nautical miles (NM). Graphic depictions attached.

Arrival Name	Number	STAR Computer Code	Superseded Number	Dated	Effective Date
COKTL (RNAV)	TWO	COKTL.COKTL2	ONE	02/25/2021	14JULY2022
<u>FLIGHT INSPECTED BY:</u>				<i>Digitally signed by</i> DAVID DANNER	
THOMAS E MOLOKIE <small>Name</small>		FPO <small>Organization</small>	12/14/2021 <small>Date</small>	Dec 14, 2021 <small>Signature</small>	<i>Digitally signed by</i> DAVID DANNER Dec 14, 2021
<u>DEVELOPED BY:</u>					
MARK PHIPPS, LAS METROPLEX PROJECT MANAGER <small>Name</small>		DENVER ARTCC <small>Organization</small>	8/13/2021 <small>Date</small>	<i>Digitally signed by</i> DAVID DANNER Dec 14, 2021	<small>Signature</small>
<u>APPROVED BY:</u>					
PAT MULQUEEN <small>Name</small>		AJV-A440 <small>Organization</small>	 <small>Date</small>	 <small>Signature</small>	

CHANGES:

1. ADDED TQILA PRIOR TO BASIC ON BASIC ENROUTE TRANSITION AND CHANGED TRANSITION NAME FROM BASIC TRANSITION TO TQILA TRANSITION.
2. DELETED NOTE REGARDING CRITICAL DMES.
3. ADDED RESTRICTION AT BAUMM 8600B11000.
4. CHANGED RWY 08L/R FM LEG FROM 006.28 TRACK TO 005.00 TRACK.
5. REMOVED 1L/R FM LEG AND UPDATED ARRIVAL TEXT TO EXPECT ILS 1L OR RADAR VECTORS TO FINAL APPROACH COURSE.
6. REMOVED WORD VISUALLY FROM LOST COMM WORDING.

REASONS:

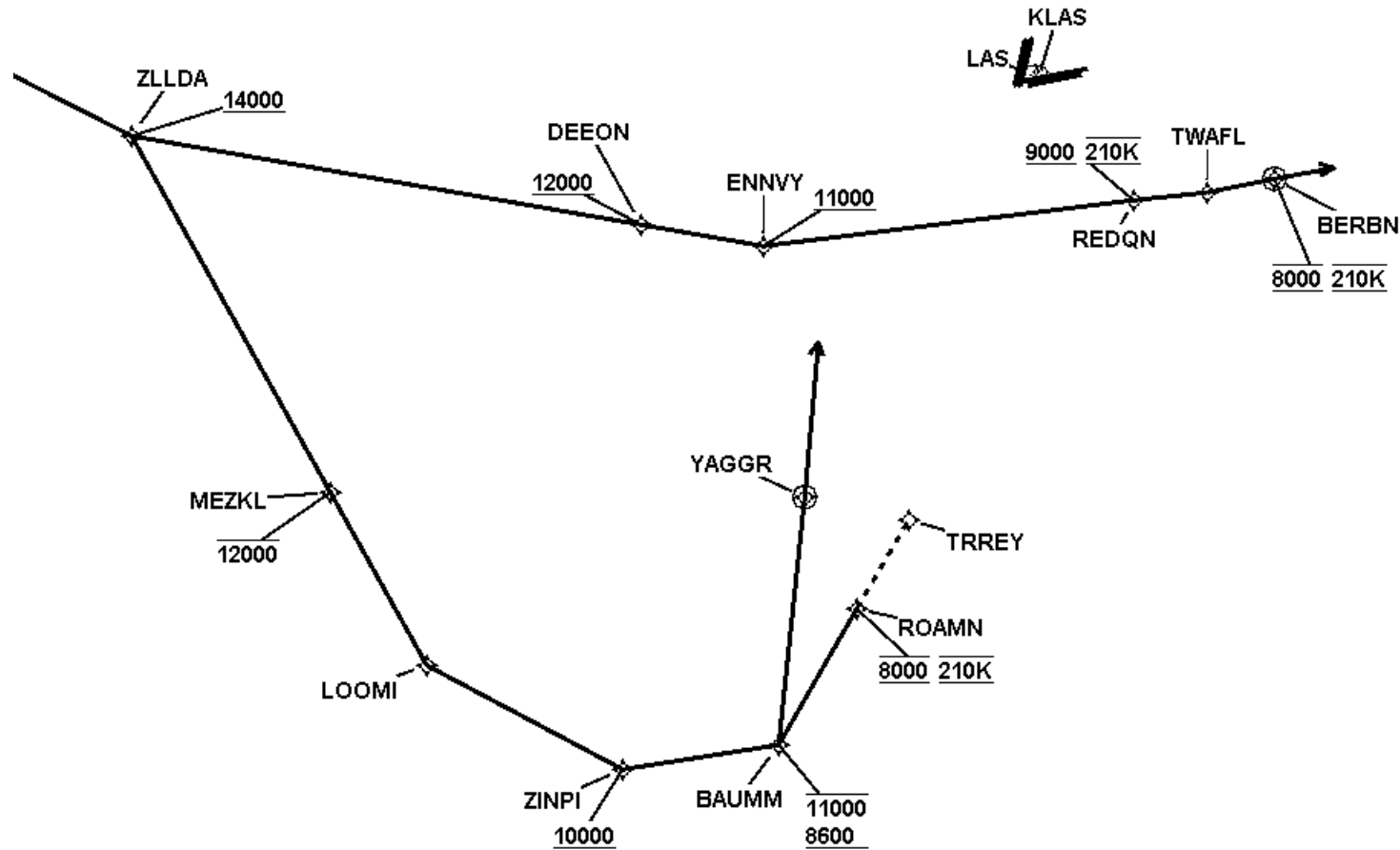
1. ATC REQUEST TO FACILITATE DIRECT ROUTING TO BEGIN THE STAR IN ZOA AIRSPACE.
2. NO LONGER NEEDED.
3. ATC REQUEST: SEGREGATES FROM DEPARTURES.
4. ATC REQUEST: CONSISTENT WITH OTHER RWY 08L/R RNAV STARS.
5. PROCEDURE CAPABLE OF HOOKING TO IAP.
6. IFR PROCEDURE.

QUALITY
14
CHECKED

FEDERAL AVIATION ADMINISTRATION
FLIGHT STANDARDS SERVICE
STANDARD TERMINAL ARRIVAL (STAR)

Bearings, headings, courses, tracks and radials are magnetic. Elevations and altitudes are in feet, MSL. Altitudes are minimum altitudes unless otherwise indicated.
Distances are in nautical miles (NM). Graphic depictions attached.

Arrival Name	Number	STAR Computer Code	Superseded Number	Dated	Effective Date
COKTL (RNAV)	TWO	COKTL.COKTL2	ONE	02/25/2021	14JULY2022
Graphic Depiction 1					

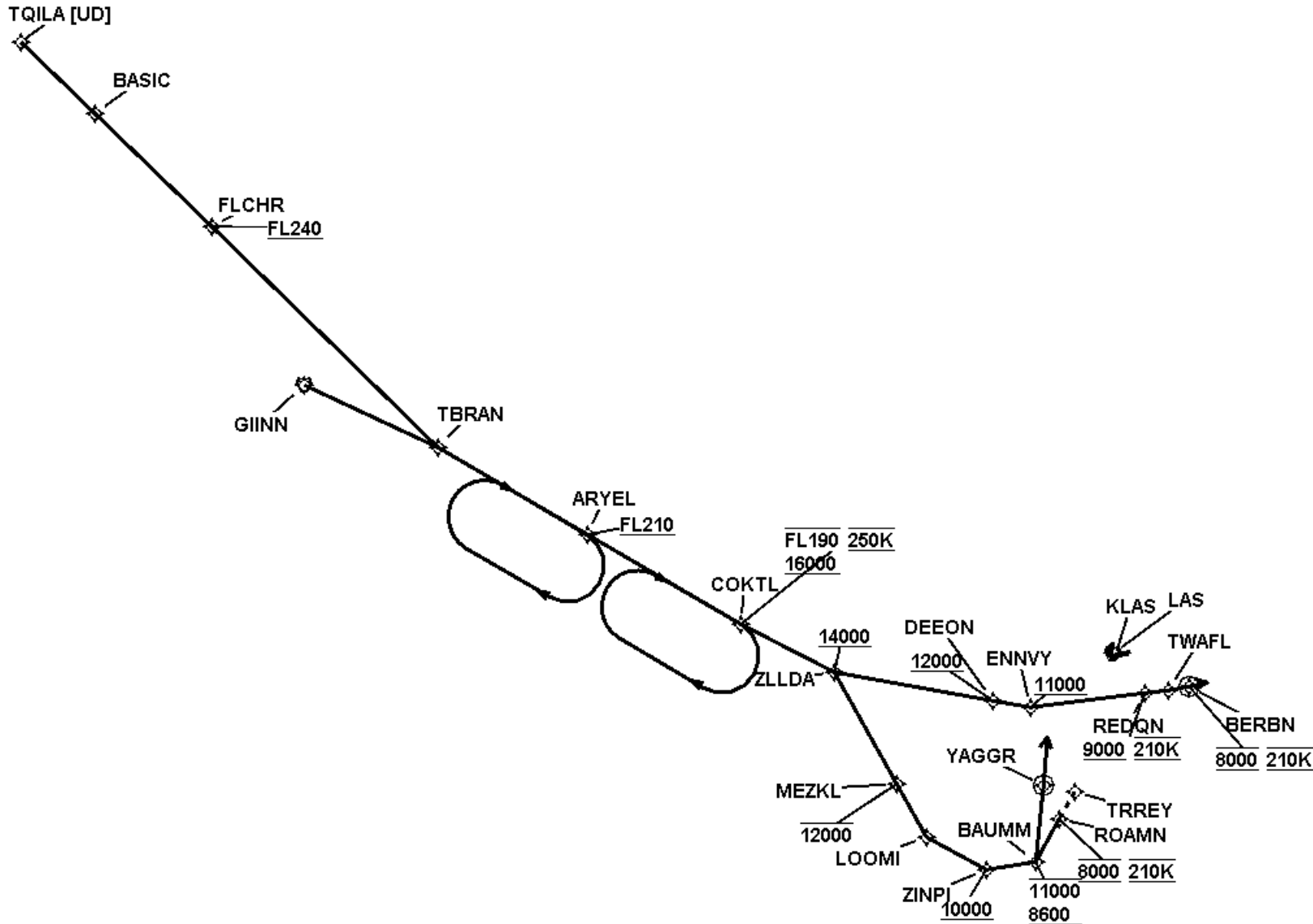


FEDERAL AVIATION ADMINISTRATION
FLIGHT STANDARDS SERVICE
STANDARD TERMINAL ARRIVAL (STAR)

Bearings, headings, courses, tracks and radials are magnetic. Elevations and altitudes are in feet, MSL. Altitudes are minimum altitudes unless otherwise indicated.
Distances are in nautical miles (NM). Graphic depictions attached.

Arrival Name	Number	STAR Computer Code	Superseded Number	Dated	Effective Date
COKTL (RNAV)	TWO	COKTL.COKTL2	ONE	02/25/2021	14JULY2022

Graphic Depiction 2



MM

FEDERAL AVIATION ADMINISTRATION
FLIGHT STANDARDS SERVICE
STAR (DATA RECORD)

Arrival Name COKTL (RNAV)		Number TWO		STAR Computer Code COKTL.COKTL2		Superseded Number ONE		Dated 02/25/2021	Effective Date 14JULY2022
FIX/NAVAID	LAT/LONG	C	FO/FB	LEG TYPE	TC	DIST (NM)	ALTITUDE	SPEED	REMARKS
En Route Transition									
FLCHR	370602.27N / 1165231.36W	Y		IF			AT/ABOVE FL240		FLCHR.COKTL2
TBRAN	363902.48N / 1162925.81W	Y	FB	TF	145.39	32.71			
ARYEL	362718.20N / 1161251.25W	Y	FB	TF	131.19	17.77	AT/ABOVE FL210		
COKTL	361503.98N / 1155543.16W	Y	FB	TF	131.36	18.46	16000BFL190	AT 250K	
En Route Transition									
GIINN	364801.66N / 1164450.66W	Y		IF					GIINN.COKTL2
TBRAN	363902.48N / 1162925.81W	Y	FB	TF	125.84	15.30			
ARYEL	362718.20N / 1161251.25W	Y	FB	TF	131.19	17.77	AT/ABOVE FL210		
COKTL	361503.98N / 1155543.16W	Y	FB	TF	131.36	18.46	16000BFL190	AT 250K	
En Route Transition									
TQILA	372833.00N / 1171202.00W	Y		IF					TQILA.COKTL2
BASIC	371954.27N / 1170430.98W	Y	FB	TF	145.22	10.51			
FLCHR	370602.27N / 1165231.36W	Y	FB	TF	145.27	16.84	AT/ABOVE FL240		
TBRAN	363902.48N / 1162925.81W	Y	FB	TF	145.39	32.71			
ARYEL	362718.20N / 1161251.25W	Y	FB	TF	131.19	17.77	AT/ABOVE FL210		
COKTL	361503.98N / 1155543.16W	Y	FB	TF	131.36	18.46	16000BFL190	AT 250K	
Common Route									
COKTL	361503.98N / 1155543.16W	Y		IF			16000BFL190	AT 250K	COKTL.COKTL2
ZLLDA	360819.66N / 1154503.06W	Y	FB	TF	127.88	10.95	AT/ABOVE 14000		
Runway Transition									
ZLLDA	360819.66N / 1154503.06W	Y		IF			AT/ABOVE 14000		
MEZKL	355551.36N / 1153959.70W	Y	FB	TF	161.75	13.11	AT/BELOW 12000		
LOOMI	354949.76N / 1153732.46W	Y	FB	TF	161.65	06.34			
ZINPI	354520.49N / 1153043.57W	Y	FB	TF	128.92	07.13	10000B11000		
BAUMM	354510.45N / 1152426.79W	Y	FB	TF	091.84	05.11	8600B11000		

FEDERAL AVIATION ADMINISTRATION
FLIGHT STANDARDS SERVICE
STAR (DATA RECORD)

Arrival Name	Number	STAR Computer Code	Superseded Number	Dated	Effective Date
COKTL (RNAV)	TWO	COKTL.COKTL2	ONE	02/25/2021	14JULY2022

FIX/NAVAID	LAT/LONG	C	FO/FB	LEG TYPE	TC	DIST (NM)	ALTITUDE	SPEED	REMARKS
ROAMN	354857.47N / 1152021.90W	Y	FB	TF	041.29	05.03	AT 8000	AT 210K	
KLAS:RWY 1L,RWY 1R									
Runway Transition									
ZLLDA	360819.66N / 1154503.06W	Y		IF			AT/ABOVE 14000		
MEZKL	355551.36N / 1153959.70W	Y	FB	TF	161.75	13.11	AT/BELOW 12000		
LOOMI	354949.76N / 1153732.46W	Y	FB	TF	161.65	06.34			
ZINPI	354520.49N / 1153043.57W	Y	FB	TF	128.92	07.13	10000B11000		
BAUMM	354510.45N / 1152426.79W	Y	FB	TF	091.84	05.11	8600B11000		
YAGGR	355248.54N / 1152131.70W	Y	FO	TF	017.28	07.98	AT 8000	AT 210K	
KLAS:RWY 8L,RWY 8R				FM	016.00				
Runway Transition									
ZLLDA	360819.66N / 1154503.06W	Y		IF			AT/ABOVE 14000		
DEEON	360224.36N / 1152551.32W	Y	FB	TF	110.72	16.64	AT/ABOVE 12000		
ENNVY	360058.51N / 1152114.95W	Y	FB	TF	110.91	04.00	AT/ABOVE 11000		
REDQN	360008.26N / 1150628.33W	Y	FB	TF	093.92	12.02	AT/ABOVE 9000	AT 210K	
TWAFI	355958.01N / 1150331.31W	Y	FB	TF	094.06	02.40			
BERBN	355957.25N / 1150050.72W	Y	FO	TF	090.32	02.17	AT 8000	AT 210K	
KLAS:RWY 19L,RWY 19R,RWY 26L,RWY 26R				FM	090.32				