

OLD

PHOENIX, ARIZONA

20198

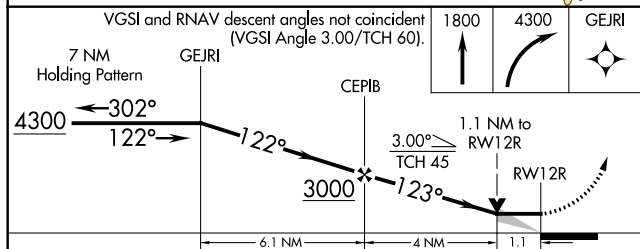
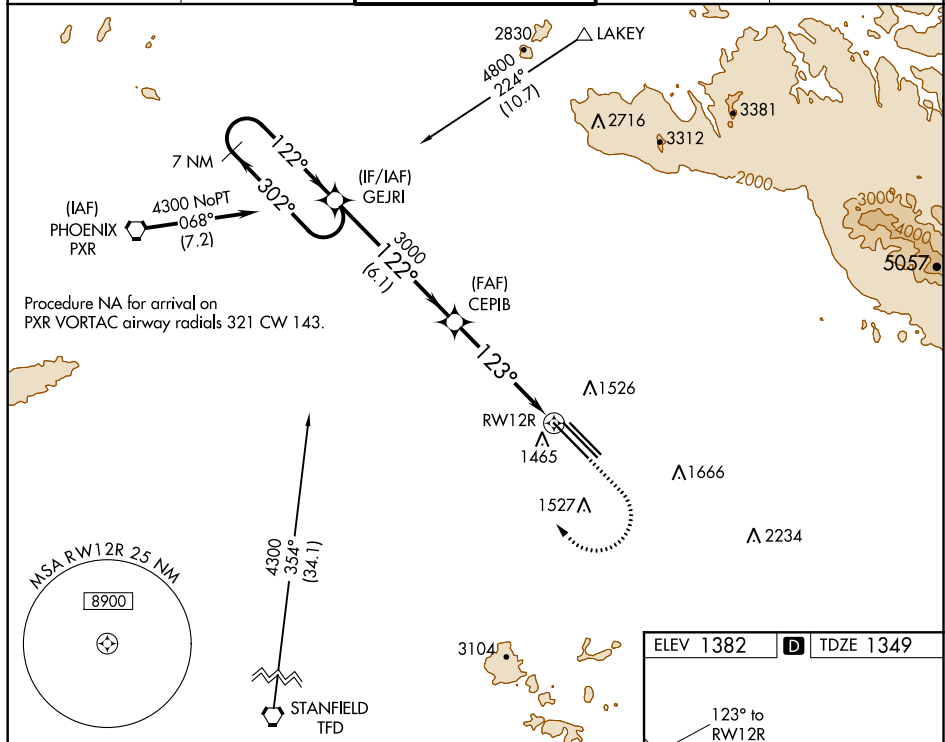
WAAS CH 50325 W12B	APP CRS 123°	Rwy Idg 10401 TDZE 1349 Apt Elev 1382
--	------------------------	--

RNAV (GPS) RWY 12R

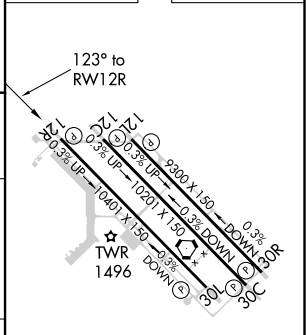
PHOENIX-MESA GATEWAY (IWA)

<p>⚠ DME/DME RNP-0.3 NA. VDP NA with Phoenix Sky Harbor Intl altimeter setting. When local altimeter setting not received, use Phoenix Sky Harbor Intl altimeter setting and increase all MDA 80 feet; increase LP and LNAV Cat C and D visibility ¼ mile.</p>	<p>MISSED APPROACH: Climb to 1800 then climbing right turn to 4300 direct GEJRI and hold, continue climb-in-hold to 4300.</p>
---	---

ATIS ★ 133.5 270.275	PHOENIX APP CON 124.9 353.8	GATEWAY TOWER ★ 120.6 (CTAF) 289.4	GND CON 128.25 275.8	CLNC DEL 135.05
--------------------------------	---------------------------------------	--	--------------------------------	---------------------------



ELEV 1382	D TDZE 1349
-----------	--------------------



CATEGORY	A	B	C	D	E
LP MDA	1740-1 391 (400-1)	1740-1½ 391 (400-1½)	1740-1½ 391 (400-1½)	1740-1½ 391 (400-1½)	2300-3 951 (1000-3)
LNAV MDA	1740-1 391 (400-1)	1740-1½ 391 (400-1½)	1740-1½ 391 (400-1½)	1740-1½ 391 (400-1½)	2420-3 1071 (1100-3)
CIRCLING	1880-1 498 (500-1)	1880-1½ 498 (500-1½)	1880-1½ 498 (500-1½)	1940-2 558 (600-2)	2420-3 1038 (1100-3)

MIRL Rwy 12R-30L
HIRL Rwy 12L-30R and 12C-30C
REIL Rwy 12L and 30R

PHOENIX, ARIZONA
Amdt 1C 24MAY18

33°18'N-111°39'W

PHOENIX-MESA GATEWAY (IWA) RNAV (GPS) RWY 12R

SW-4, 08 OCT 2020 to 05 NOV 2020

KIWA
PHOENIX-MESA GATEWAY
PHOENIX, AZ
100K CIRCLING
ALL PROCEDURES

