

**FEDERAL AVIATION ADMINISTRATION  
FLIGHT STANDARDS SERVICE  
CHARTED VISUAL FLIGHT PROCEDURE (CVFP)**

Bearings, headings, courses, tracks and radials are magnetic. Elevations and altitudes are in feet, MSL. Altitudes are minimum altitudes unless otherwise indicated.  
Ceilings are in feet above airport elevation. Distances are in nautical miles. Visibilities are in statute miles or feet RVR unless otherwise indicated.

<u>AIRPORT ID</u>	<u>CVFP NAME</u>	<u>ORIG/AMDT</u>	<u>CITY</u>	<u>STATE</u>	<u>SUPERSEDES</u>	<u>AMDT NO.</u>	<u>DATED</u>	<u>EFFECTIVE DATE</u>
KDCA	RIVER VISUAL RWY 19	6	WASHINGTON	DC	RIVER VISUAL RWY 19	5	09 Sep 99	11 JUL 2024

**VISUAL ARRIVAL ROUTE:**

FROM (Visual Landmarks)	TO (Visual Landmarks)	COURSE (if desired)	ALTITUDE (if needed) Show if for Class B
DAVID W. TAYLOR NAVAL SHIP RESEARCH AND DEVELOPMENT CENTER	CHAIN BRIDGE		1800 (FOR CLASS B)
CHAIN BRIDGE	ABEAM GEORGETOWN RESERVOIR		1500 (FOR CLASS B)
ABEAM GEORGETOWN RESERVOIR	KEY BRIDGE		900 (FOR CLASS B)
KEY BRIDGE	RWY 19		

**WEATHER MINIMA:**

CEILING: 3500    VISIBILITY: 3

**NOTES:**

CHART NOTE: RADAR REQUIRED  
CHART NOTE: CLEARANCE FOR VISUAL APPROACH DOES NOT AUTHORIZE PENETRATION OF P-56  
CHART NOTE: PROHIBITED AREA (P-56) 1.5 NM NORTH OF DCA - AVOID SURFACE TO 18,000 MSL  
CHART NOTE: RECOMMENDED ALTITUDES FOR NOISE ABATEMENT

**SUPPLEMENTARY NAVAID / WAYPOINT INFORMATION AND ADDITIONAL LANDMARKS:**

CHART ALTITUDE 3000 AT DAVID W. TAYLOR NAVAL SHIP RESEARCH AND DEVELOPMENT CENTER  
CHART WITH THE CORRESPONDING LANDMARKS: GEORGETOWN RESERVOIR/RORRK  
CHART: AMERICAN LEGION MEMORIAL BRIDGE, DALECARLIA RESERVOIR, ROOSEVELT BRIDGE, MEMORIAL BRIDGE, ROCHAMBEAU BRIDGE, DARIC, GREYZ, P-56

**VERTICAL GUIDANCE NAVAID AND ANGLE:**    VGS1 INDICATOR 3 DEGREES

**DESCRIPTION OF ROUTE:**

AIRCRAFT MAY VISUALLY FOLLOW THE RIVER TO THE AIRPORT, OR MAY PROCEED VIA THE RNAV (GPS) Y RWY 19 TO RORRK, OR VIA THE RNAV (RNP) Z RWY 19 TO GREYZ, THEN FOLLOW THE RIVER TO THE AIRPORT.

**COMMUNICATION:**

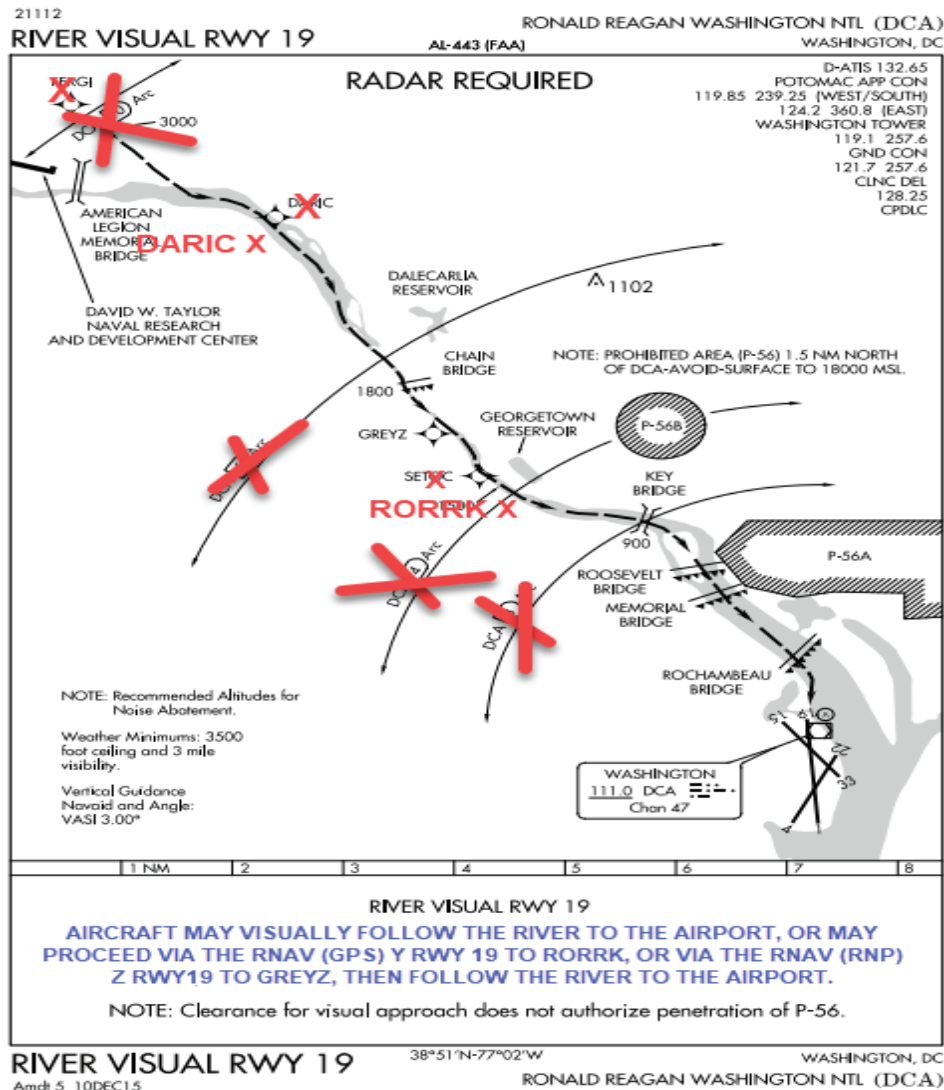
POTOMAC APPROACH CONTROL TOWER, TOWER, GND CNTL, CLNC DLVY AND ATIS



**FEDERAL AVIATION ADMINISTRATION  
FLIGHT STANDARDS SERVICE  
CHARTED VISUAL FLIGHT PROCEDURE (CVFP)**

Bearings, headings, courses, tracks and radials are magnetic. Elevations and altitudes are in feet, MSL. Altitudes are minimum altitudes unless otherwise indicated.  
Ceilings are in feet above airport elevation. Distances are in nautical miles. Visibilities are in statute miles or feet RVR unless otherwise indicated.

AIRPORT ID	CVFP NAME	ORIG/AMDT	CITY	STATE	SUPERSEDES	AMDT NO.	DATED	EFFECTIVE DATE
KDCA	RIVER VISUAL RWY 19	6	WASHINGTON	DC	RIVER VISUAL RWY 19	5	09 Sep 99	11 JUL 2024

**GRAPHIC DEPICTION:**

**FEDERAL AVIATION ADMINISTRATION  
FLIGHT STANDARDS SERVICE  
CHARTED VISUAL FLIGHT PROCEDURE (CVFP)**

Bearings, headings, courses, tracks and radials are magnetic. Elevations and altitudes are in feet, MSL. Altitudes are minimum altitudes unless otherwise indicated.  
Ceilings are in feet above airport elevation. Distances are in nautical miles. Visibilities are in statute miles or feet RVR unless otherwise indicated.

<u>AIRPORT ID</u>	<u>CVFP NAME</u>	<u>ORIG/AMDT</u>	<u>CITY</u>	<u>STATE</u>	<u>SUPERSEDES</u>	<u>AMDT NO.</u>	<u>DATED</u>	<u>EFFECTIVE DATE</u>
KDCA	RIVER VISUAL RWY 19	6	WASHINGTON	DC	RIVER VISUAL RWY 19	5	09 Sep 99	11 JUL 2024

**FLIGHT INSPECTED BY:**

GARY BELL

**ORGANIZATION:**

FPO

**DATE:**

04/30/2024

FLIGHT INSPECTION  
SIGNATURE:*Digitally signed by***CASIMIR L TABAKA**

May 06, 2024

**DEVELOPED BY:**

MATTHEW R. FISHER

FAA/POTOMAC  
TRACON

3/6/2023

DEVELOPED BY  
SIGNATURE:**MATTHEW FISHER***Digitally signed by MATTHEW FISHER  
Date: 2023.03.06 12:36:36 -05'00'***APPROVED BY:**

CAS TABAKA, MANAGER

AJV-A432

APPROVED BY  
SIGNATURE:*Digitally signed by***CASIMIR L TABAKA**

Jan 24, 2024

**CHANGES - REASONS:**

1. ADDED OPTION TO NAVIGATE VIA RNAV (GPS) Y RWY 19 - JOINT REQUEST BY ATC, INDUSTRY AND DCA CWG.
2. DELETED FERGI AND SETOC WAYPOINTS - JOINT REQUEST BY ATC, INDUSTRY AND DCA CWG.
3. RELOCATED DARIC AND GREYZ WAYPOINTS - JOINT REQUEST BY ATC, INDUSTRY AND DCA CWG.
4. ADDED RORRK WAYPOINT - JOINT REQUEST BY ATC, INDUSTRY AND DCA CWG.
5. REMOVED DME ARCS - NO LONGER NEEDED.
6. CHANGED FIRST VISUAL ROUTE POINT FROM "DAVID W. TAYLOR NAVAL RESEARCH AND DEVELOPMENT CENTER" TO "DAVID W. TAYLOR NAVAL SHIP RESEARCH AND DEVELOPMENT CENTER" - CONSISTENT WITH DESCRIPTION IN SUPPLEMENTARY INFORMATION.

